



# ROYSTON

FORMAT: EC

High St., Royston, Barnsley S71 4RF

32500PL01  
01 - 04-12-25

This scheme is a visual representation of our signage proposal. Sizes, colours and physical attributes of the actual signage may vary due to the limitations of the manufacturing process.  
This document is the property of Omega Signs Ltd. and must not be passed on to third parties without prior consent. Any unauthorised use of this document will result in a design fee being charged.  
Copyright © Omega Signs 2025.

**Omega Signs Limited**  
Newmarket Approach, Leeds, LS9 0RJ  
0113 240 3000  
[info@omega-signs.co.uk](mailto:info@omega-signs.co.uk)  
[www.omega-signs.co.uk](http://www.omega-signs.co.uk)  
 

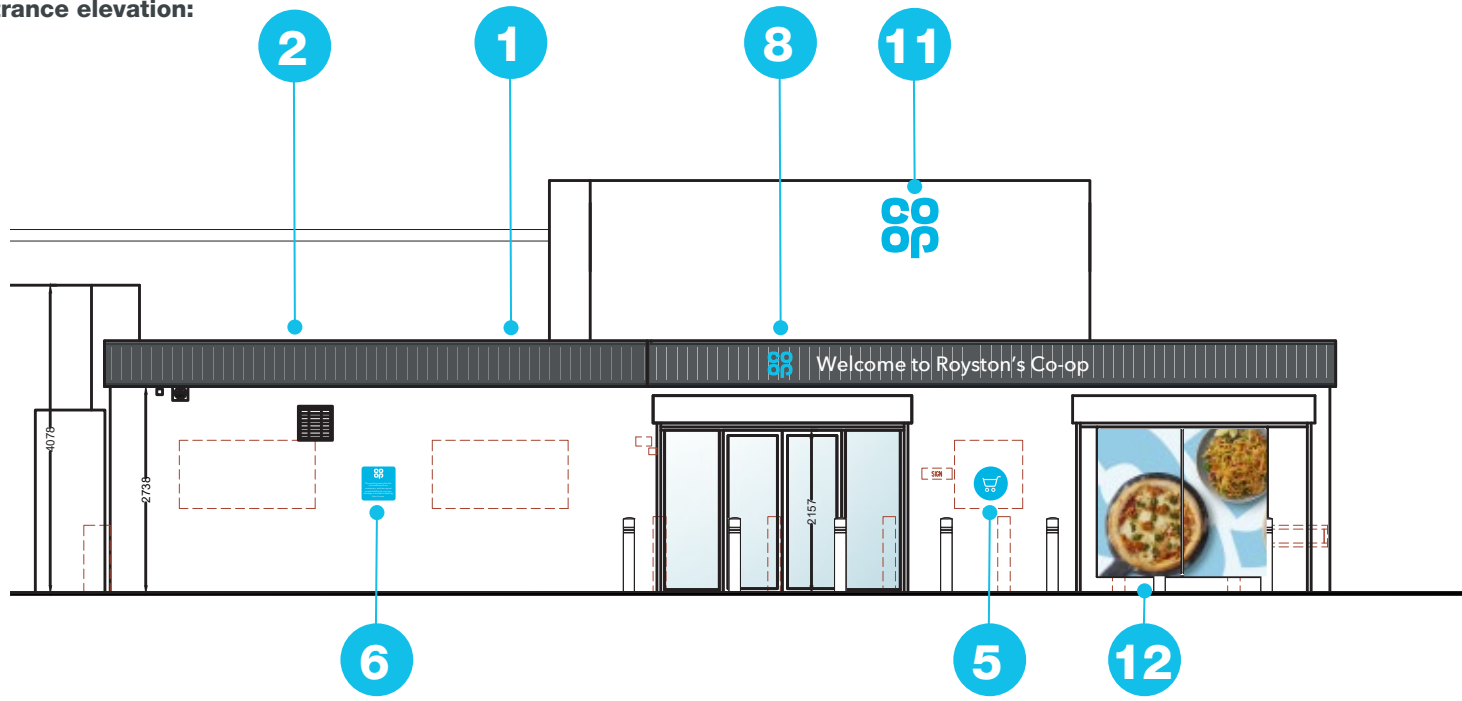




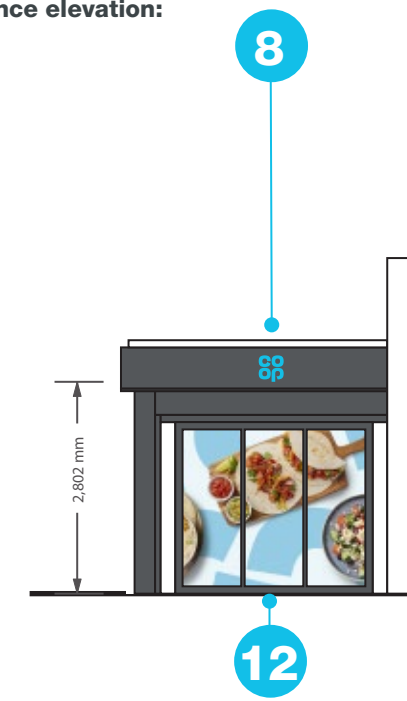


PROPOSED ELEVATIONS

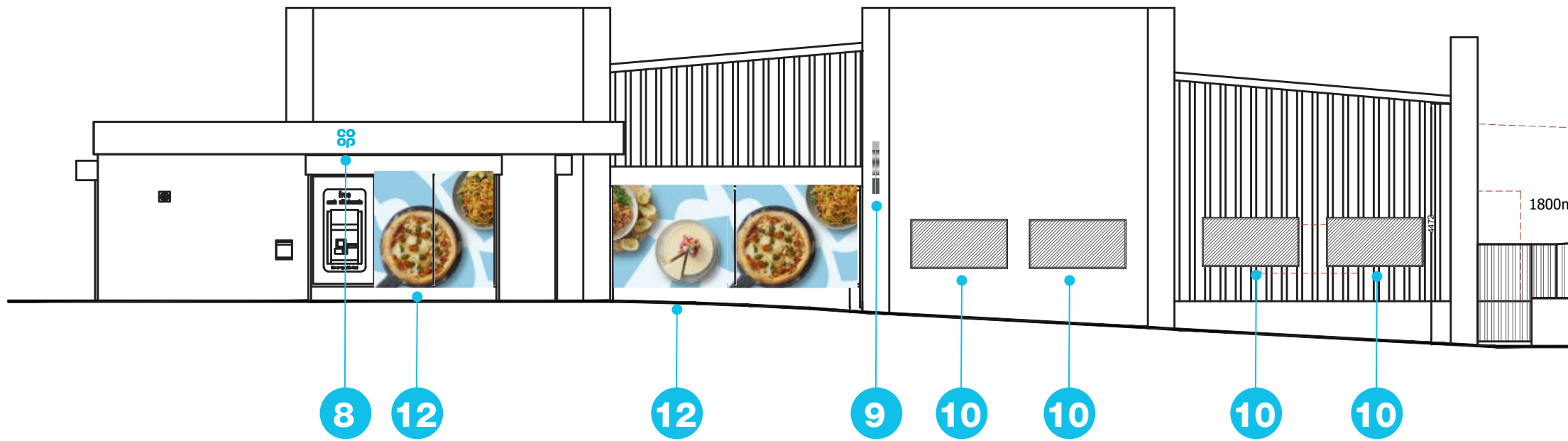
main entrance elevation:



redundant entrance elevation:



roadside elevation:



SCALE 1 : 100 0m 1m 2m 3m 4m 5m  
 SCALE 1 : 1 0mm 10mm 20mm 40mm  
 @A3

No. 32500PL01

Client Co-op

Created 16-10-25

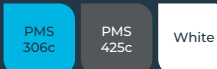
Typeface Avenir Next LT Pro

Issue 01 - 04-12-25

Project Royston

Designer A Holdsworth

Colours



Page 04 of 12

Location S71 4RF

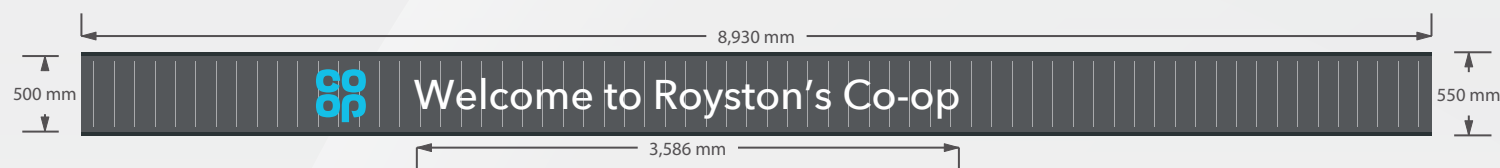
Approved H Knowles

This scheme is a visual representation of our signage proposal. Sizes, colours and physical attributes of the actual signage may vary due to the limitations of the manufacturing process. This document is the property of Omega Signs Ltd. and must not be passed on to third parties without prior consent. Any unauthorised use of this document will result in a design fee being charged. Copyright © Omega Signs 2025.

Omega Signs Limited  
 Newmarket Approach,  
 Leeds, LS9 0RJ  
 0113 240 3000  
 info@omega-signs.co.uk  
 www.omega-signs.co.uk



PROPOSED SIGNAGE



**Item 1 (over entrance)**

1 No. Slatted Fascia with 350mm logo and 190mm Perspex letters

**Specifications**

Slatted aluminium fascia, fixed to the building substrate with suitable fixings, with a chamfered trim around the perimeter.

Fascia and trim to be finished in Dark Grey wood effect.

350mm single sided built up logo made from steel mounting plate with individual built-up letters. Mounting plate to be 3mm Mild Steel fixed to building substrate with brass locator fixings. 3D built-up letters to have aluminium sides, 50mm deep with 5mm Co-op BLUE acrylic faces. All visible edges, aluminium returns & mounting plate to be finished Silver RAL 9006 60% gloss. Internally illuminated by white LEDs (300 candelas). 5mm white Perspex welcome letters on locators. Logo position altered to appear directly above the main entrance.

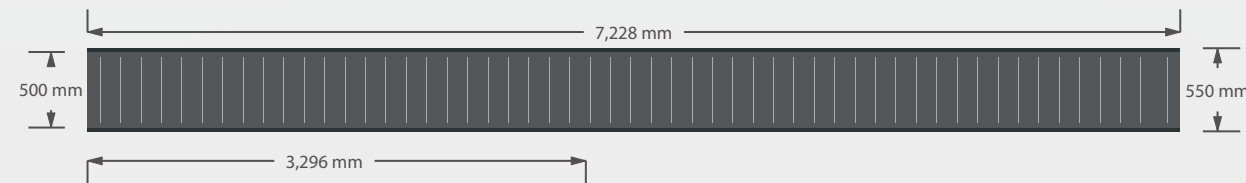
**2745mm above ground.**

**Size:** 8930mmx550mm including 25mm upstand and 25mm downstand.

**Logo Height:** 350mm

**Text Size O/A:** 190mm

**Scale:** 1:50



**Item 2 (to the left hand side of the entrance.)**

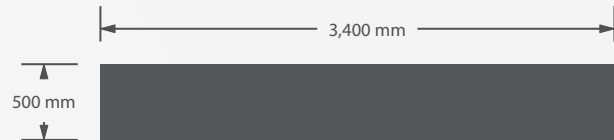
1No Slatted Fascia.

Slatted aluminium fascia, fixed to the building substrate with suitable fixings, with a chamfered trim around the perimeter. Fascia and trim to be finished in Dark Grey wood effect. All visible edges, aluminium returns & mounting plate to be finished Silver RAL 9006 60% gloss.

**2745mm above ground.**

**Size:** 7778mm x 550mm (including 25mm upstand and 25mm downstand)

**Scale:** 1:50



**Item 3 (on the left hand side of item 2)**

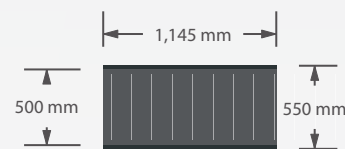
1No Existing fascia panel to be repainted.

Finished in RAL Grey 7043 by others.

**2745mm above ground.**

**Size:** 3400mm x 500mm

**Scale:** 1:50



**Item 4 (in between items 1 & 2)**

1No Slatted Fascia.

Slatted aluminium fascia, fixed to the building substrate with suitable fixings, with a chamfered trim around the perimeter.

Fascia and trim to be finished in Dark Grey wood effect. All visible edges, aluminium returns & mounting plate to be finished Silver RAL 9006 60% gloss.

**2745mm above ground.**

**Size:** 3400mm x 500mm (including 25mm upstand and 25mm downstand)

**Scale:** 1:50



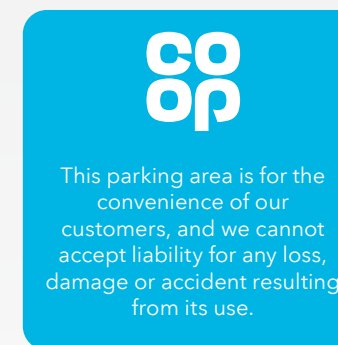
**Item 5**

1No 3mm wall mounted ACM with applied vinyl and anti-graffiti laminate.

**1250mm above ground**

**Size:** 450x450mm

**Scale:** 1:10



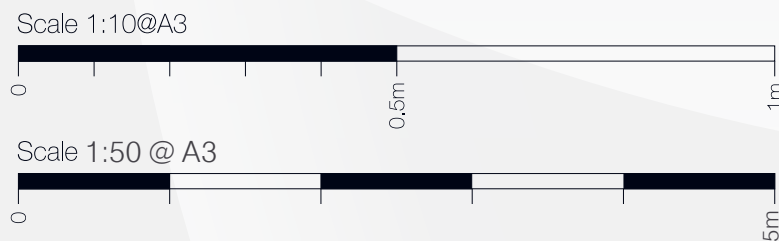
**Item 6**

2No 3mm ACM with applied vinyl and anti-graffiti laminate.

**1250mm above ground**

**Size:** 450x450mm

**Scale:** 1:10



No. 32500PL01

Client Co-op

Created 16-10-25

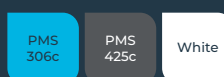
Typeface Avenir Next LT Pro

Issue 01 - 04-12-25

Project Royston

Designer A Holdsworth

Colours



Page 05 of 12

Location S71 4RF

Approved H Knowles

This scheme is a visual representation of our signage proposal. Sizes, colours and physical attributes of the actual signage may vary due to the limitations of the manufacturing process. This document is the property of Omega Signs Ltd and must not be passed on to third parties without prior consent. Any unauthorised use of this document will result in a design fee being charged. Copyright © Omega Signs 2025.

Omega Signs Limited  
Newmarket Approach,  
Leeds, LS9 0RJ  
0113 240 3000  
info@omega-signs.co.uk  
www.omega-signs.co.uk





**Item 07 (Qty: 01)**  
 1 No internally illuminated totem - 300c/d.  
 TRAFFIC GREY header panels and BLUE faced Co-op logo.  
 3D built-up letters to have aluminium sides, 50mm deep with 5mm Co-op BLUE acrylic faces. All visible edges, aluminium returns & mounting plate to be finished Silver RAL 9006 60% gloss. Internally illuminated by white LEDs. All other panels to have face applied, plot cut, reflective white vinyls applied, with or without digital over-print of details such as 'P' service badges or membership panel decals. Directional panels are available to show car park or pedestrian access.

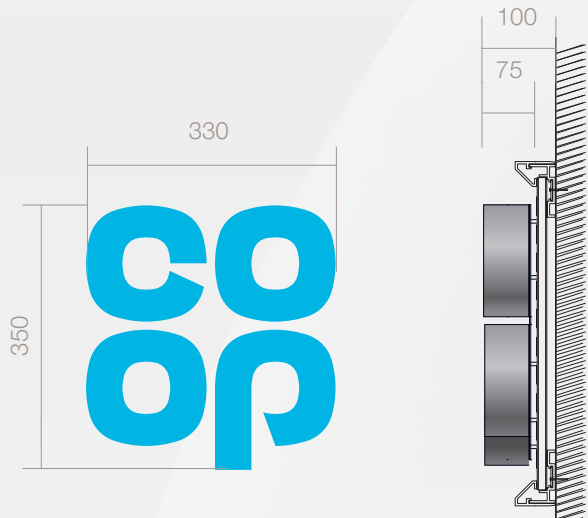
Illumination subject to provision of an electrical supply.

Requires new concrete base and root cage.

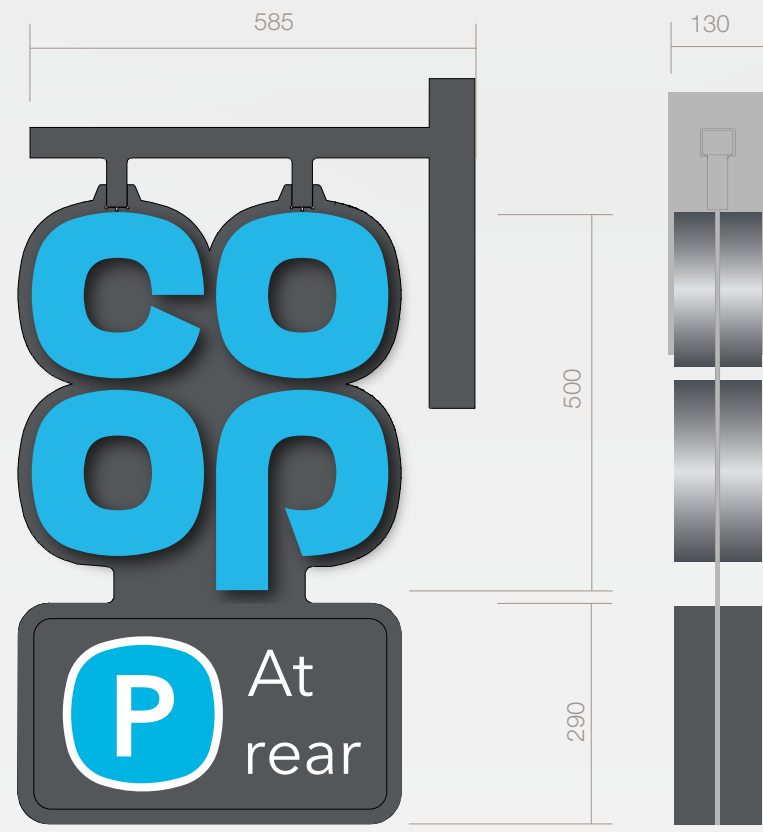
**0mm above ground**  
**Size:** 1050mm x 3505mm  
**Scale:** 1:20



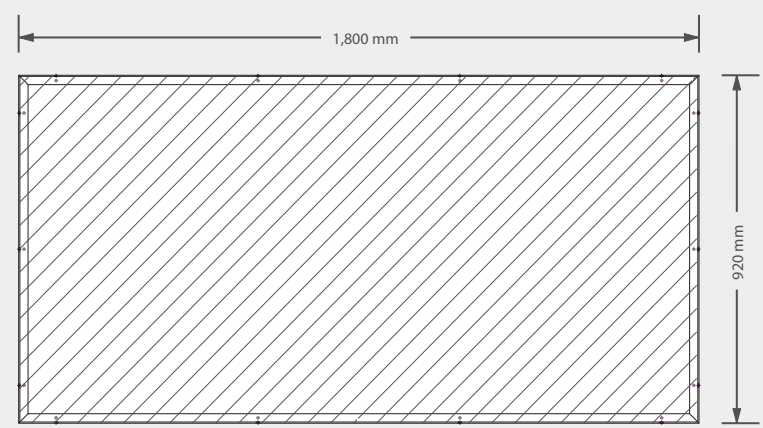
PROPOSED SIGNAGE



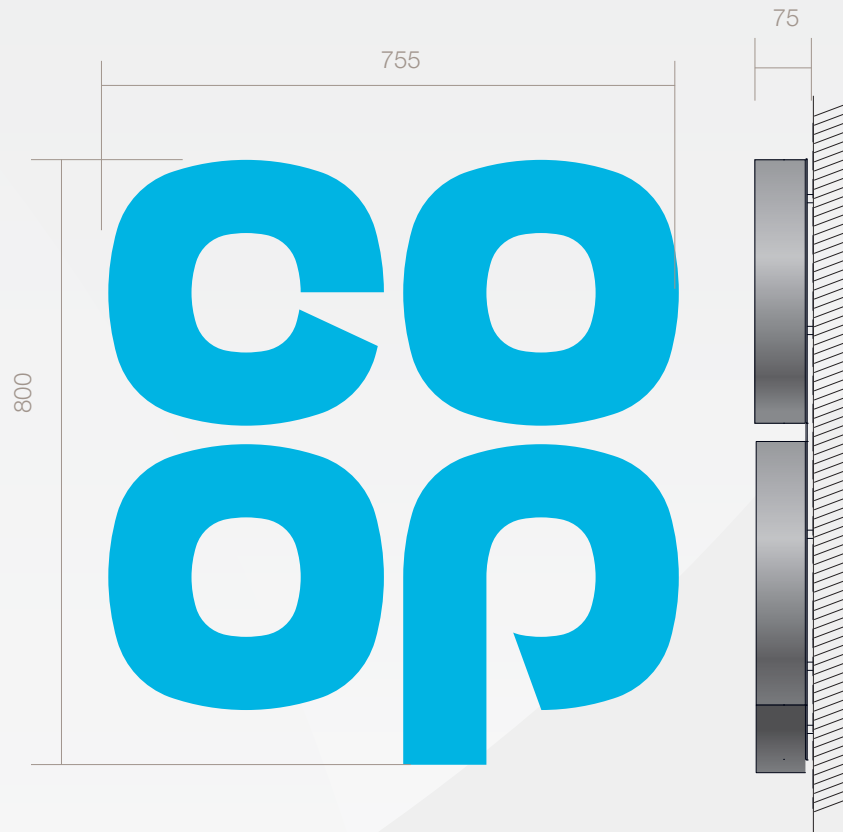
**Item 8**  
 3no Single sided built up logo  
**Specifications**  
 Single sided built up logo.  
 Steel mounting plate with individual built-up letters.  
 Mounting plate to be 3mm Mild Steel fixed to building substrate with brass locator fixings.  
 3D built-up letters to have aluminium sides, 50mm deep with 5mm Co-op BLUE acrylic faces. All visible edges, aluminium returns & mounting plate to be finished Silver RAL 9006 60% gloss.  
 Internally illuminated by white LEDs (300 candelas)  
**2080mm above ground.**  
**Redundant entrance elevation: 2800mm above ground**  
**Size:** 350mm  
**Scale:** 1:10



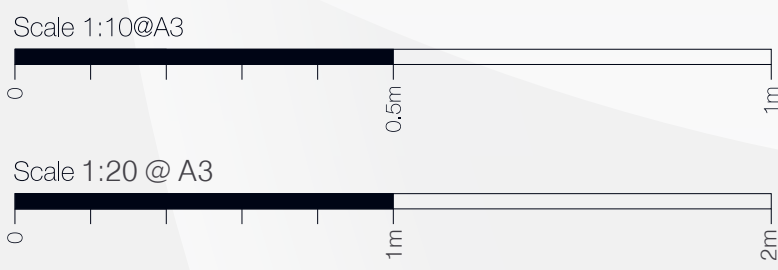
**Item 9**  
 1No Projecting sign with car park directional panel internally illuminated.  
 Internally illuminated built up letters on both sides. Individual 3D letters constructed from silver aluminium side returns and Co-op BLUE acrylic faces - Internally illuminated by white LEDs (300 candelas) faces only to illuminate.  
 Fully welded 5mm Mild Steel wall mounting plate and support frame. Profil cut logo mounting plate from 5mm mild steel, welded to the hanging tubes. All visible steel work to be finished silver to match RAL 9006 60% gloss  
**2170mm above ground**  
**Size:** 500mm  
**Scale:** 1:10



**Item 10**  
 4No Wall mounted banner frames  
**1100mm above ground.**  
**Size:** 1820x920mm  
**Scale:** 1:20



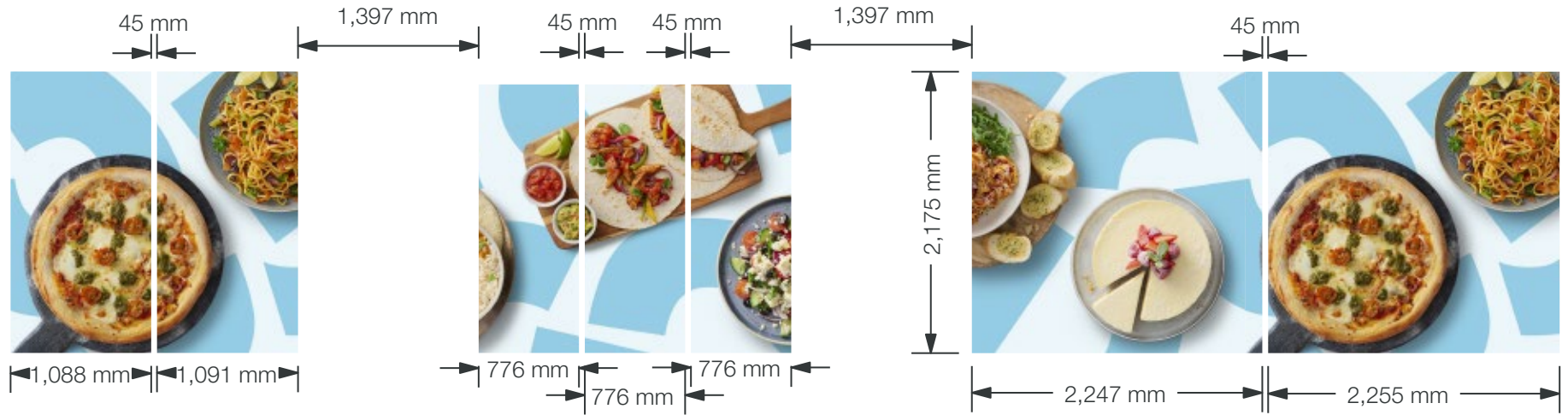
**Item 11**  
 1no Single sided built up logo  
**Specifications**  
 Single sided built up logo.  
 Steel mounting plate with individual built-up letters.  
 Mounting plate to be 3mm Mild Steel fixed to building substrate with brass locator fixings.  
 3D built-up letters to have aluminium sides, 50mm deep with 5mm Co-op BLUE acrylic faces. All visible edges, aluminium returns & mounting plate to be finished Silver RAL 9006 60% gloss.  
 Internally illuminated by white LEDs (300 candelas)  
**4450mm above ground**  
**Size:** 800mm  
**Scale:** 1:10



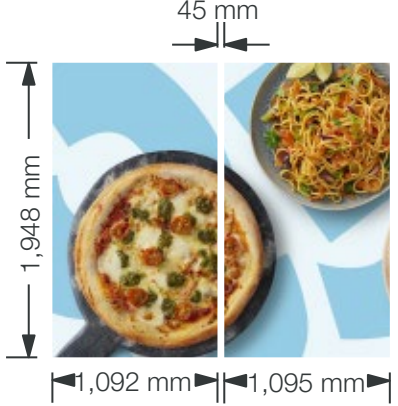
This scheme is a visual representation of our signage proposal. Sizes, colours and physical attributes of the actual signage may vary due to the limitations of the manufacturing process.  
 This document is the property of Omega Signs Ltd and must not be passed on to third parties without prior consent. Any unauthorised use of this document will result in a design fee being charged.  
 Copyright © Omega Signs 2025.

PROPOSED SIGNAGE

For presentation on the roadside elevation:



For presentation on the main entrance elevation:

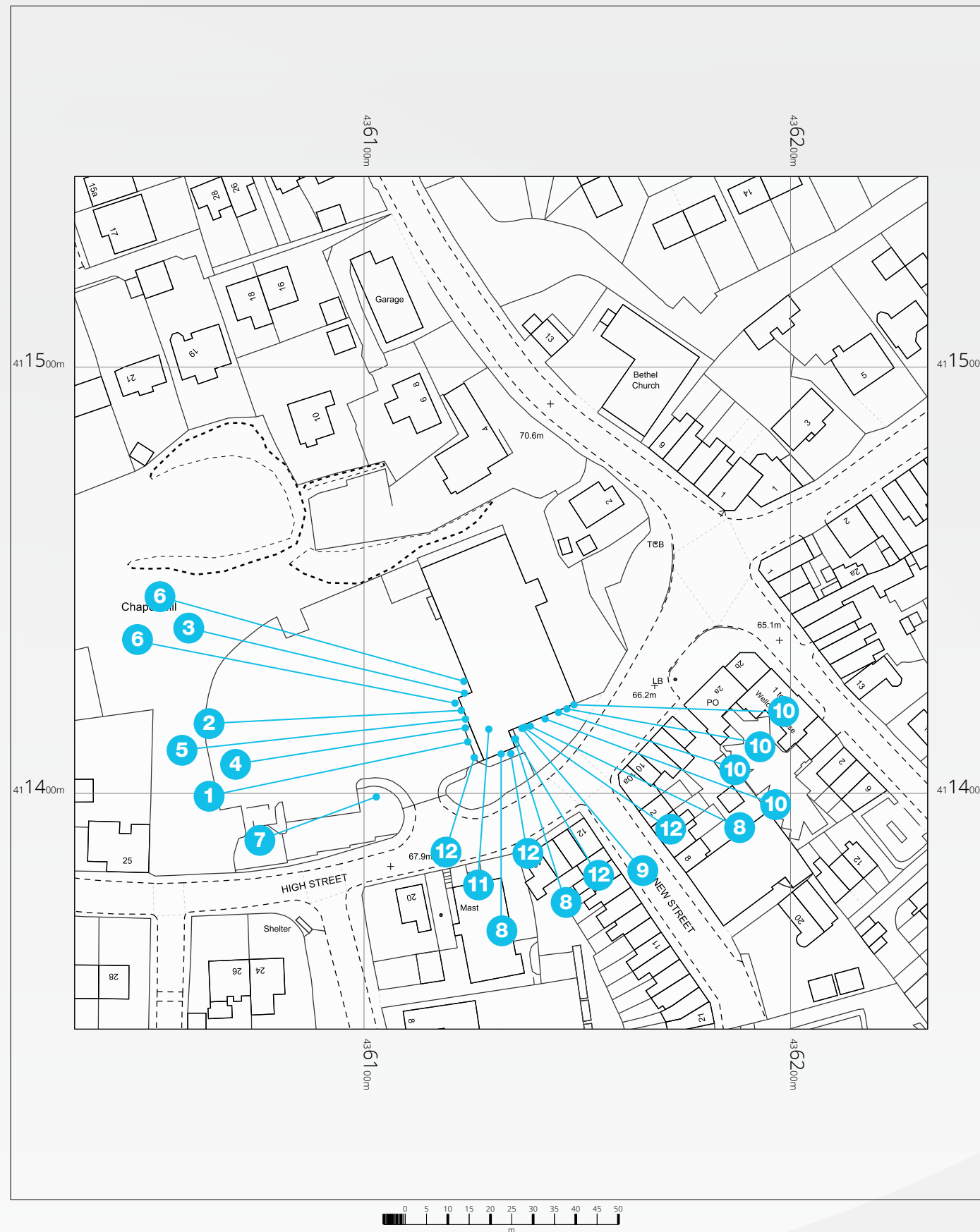


**Item 12**  
 9No Externally applied digitally printed vinyl graphics applied to glazing.  
**Roadside elevation: 195mm above ground**  
**Main entrance elevation: 0mm above ground**  
**Size:** As shown  
**Scale:** 1:50









©Crown Copyright Ordnance Survey. License no. 100041041

SCALE 1 : 1250 0m 25m 50m  
 SCALE 1 : 1 0m 20mm 40mm  
 @A3

No. 32500PL01

Client Co-op

Created 16-10-25

Typeface Avenir Next LT Pro

Issue 01 - 04-12-25

Project Royston

Designer A Holdsworth

Colours



Page 11 of 12

Location S71 4RF

Approved H Knowles

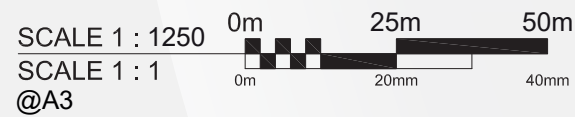
This scheme is a visual representation of our signage proposal. Sizes, colours and physical attributes of the actual signage may vary due to the limitations of the manufacturing process.  
 This document is the property of Omega Signs Ltd and must not be passed on to third parties without prior consent. Any unauthorised use of this document will result in a design fee being charged.  
 Copyright © Omega Signs 2025.

**Omega Signs Limited**  
 Newmarket Approach,  
 Leeds, LS9 0RJ  
 0113 240 3000  
 info@omega-signs.co.uk  
 www.omega-signs.co.uk





©Crown Copyright Ordnance Survey. License no. 100041041



No. 32500PL01

Client Co-op

Created 16-10-25

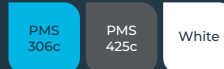
Typeface Avenir Next LT Pro

Issue 01 - 04-12-25

Project Royston

Designer A Holdsworth

Colours



Page 12 of 12

Location S71 4RF

Approved H Knowles

This scheme is a visual representation of our signage proposal. Sizes, colours and physical attributes of the actual signage may vary due to the limitations of the manufacturing process.  
This document is the property of Omega Signs Ltd and must not be passed on to third parties without prior consent. Any unauthorised use of this document will result in a design fee being charged.  
Copyright © Omega Signs 2025.

Omega Signs Limited  
Newmarket Approach,  
Leeds, LS9 0RJ  
0113 240 3000  
info@omega-signs.co.uk  
www.omega-signs.co.uk

