

FOR COMMENT



Burntwood Court Pods

Installation : Standard & Emergency Lighting

Project number : Burntwood Court Pods
Customer : SAUL Homes (Yesss Barnsley)
Processed by : Robert Barton
Date : 04.07.2023

Project description:

The following plots have been calculated using common default design parameters for reflectance values etc. any significant variation from these on site should be discussed so that re-calculations can be made prior to placing any orders.

We at Yesss Electrical continually strive to provide the most suitable solution to the design brief (written or otherwise), but it is the clients responsibility to ensure that the design, specification or equipment meets the requirements of the end user.

Any emergency plots have been carried out as open space plots and are a general indication of compliance, they make no allowance for any plant, furniture or equipment in the scene that may cause obstruction or cast shadows. There is also no complete account given for "points of emphasis" such as fire alarm call points, extinguishers, first-aid points etc., it is likely therefore that some additional provision may be necessary to provide full compliance, refer to the site specific risk assessment for further information.

These plots have been carried out using manufacturer product photometric data, substitution of any luminaires with an alternative manufacturer's product will invalidate any results, mains or emergency, and require a re-plot using the correct data from the alternative manufacturer. Yesss Electrical take no responsibility for installations where any product has been substituted.

For the avoidance of doubt, the Company is not qualified to determine the structural and electrical appropriateness of their designs and is not responsible and cannot be held liable for any improper engineering, construction, rigging or handling methods or for any improper use of structures or equipment that may be employed to realise the design.

It is the responsibility of the Purchaser and not the Company to ensure that the design complies with local fire, health and safety regulations. In the event that the design is found not to comply, the Company will adjust the design in consultation with the customer to ensure that it does comply with such regulations.

E_OE

This design should be used for tender purposes

The following values are based on precise calculations performed on calibrated lamps and luminaires, and their configurations, whereby gradual, unavoidable deviations can occur in practice. All guarantee claims are excluded for the specified data.

This exclusion of liability applies irrespective of the legal grounds for both damages and consequential damages suffered by users and third parties.

Object : Burntwood Court Pods
Installation : Standard Emergency Lighting
Project number : Burntwood Court Pods
Date : 04.07.2023



1 Luminaire data

1.1 Collingwood, BOL30x30 (BOL30x30-A)

1.1.1 Data sheet

Manufacturer: Collingwood

BOL30_X30-A **BOL30_X30**

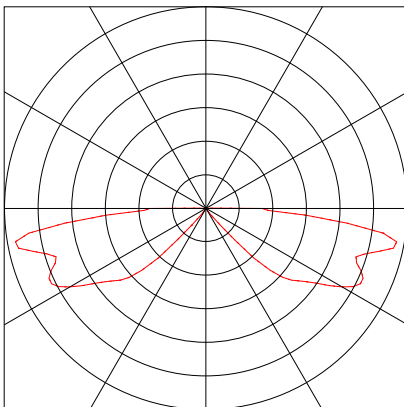
Luminaire data

Absolute Photometry
Luminaire efficacy : 21.74 lm/W
Classification : A10 ↓98.7% ↑1.3%
CIE Flux Codes : 1 27 66 99 100
UGR 4H 8H : 27.7 / 27.7
Power : 23 W
Luminous flux : 500 lm

Equipped with

Quantity : 1
Designation : LED - 23.00 W
Colour :

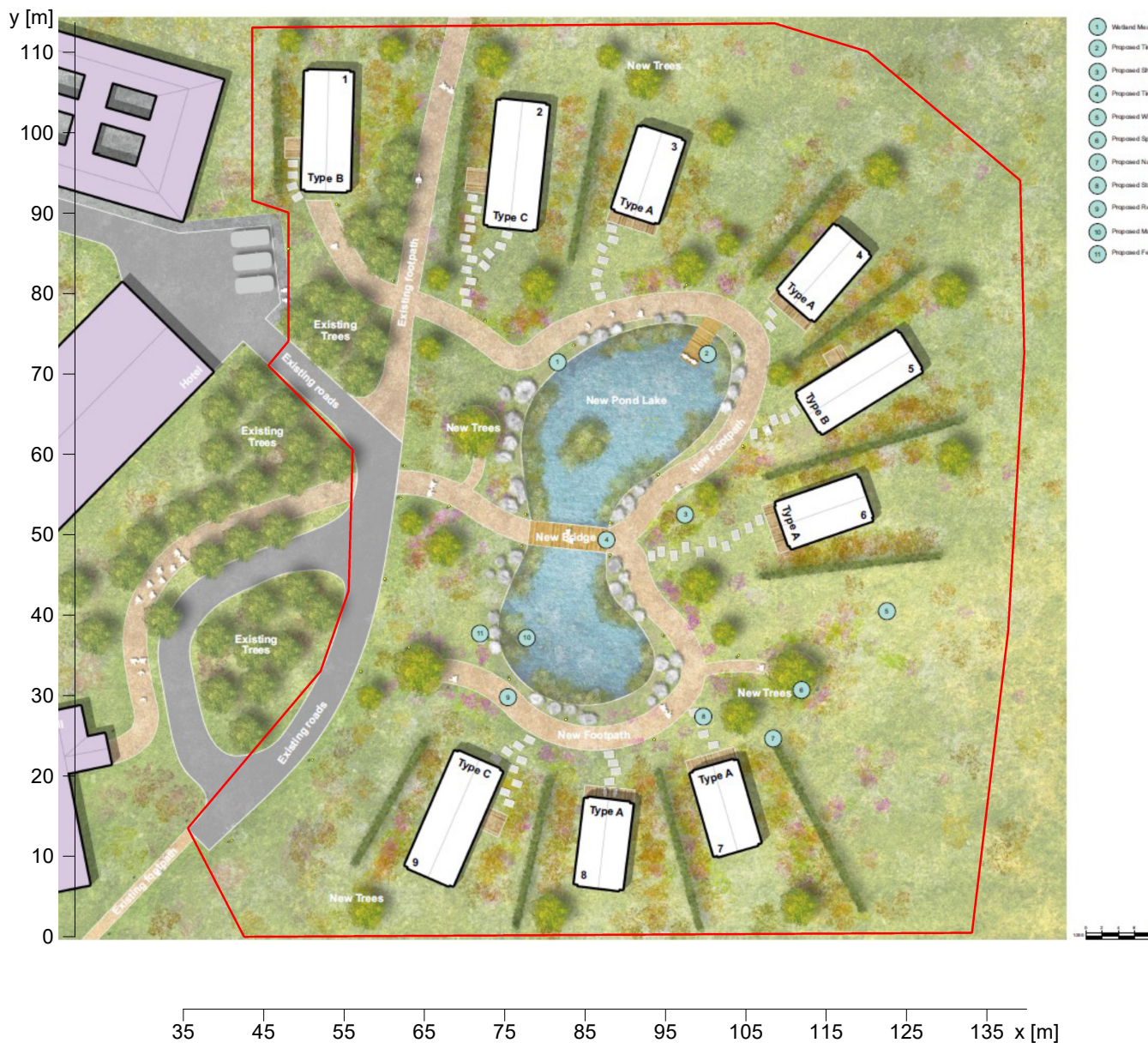
Dimensions : Ø105 mm x 145 mm



2 Exterior 1

2.1 Description, Exterior 1

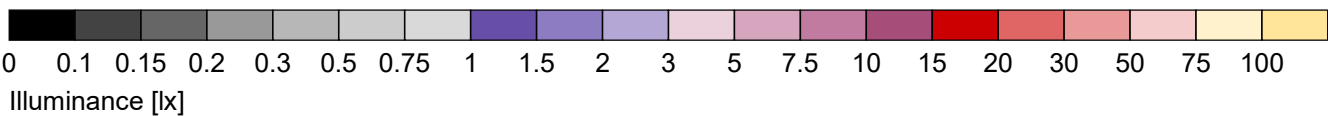
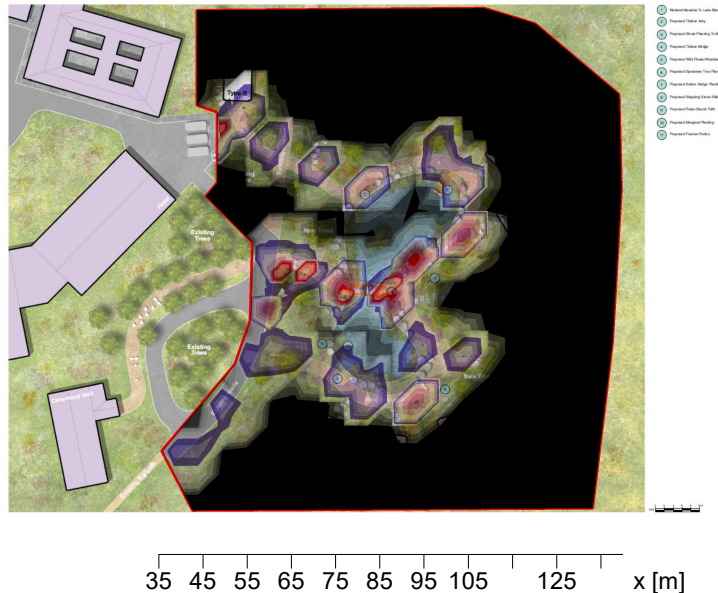
2.1.1 Floor plan



2 Exterior 1

2.2 Summary, Exterior 1

2.2.1 Result overview, Evaluation area 1



General

Calculation algorithm used	Average indirect fraction
Height (phot. centre)	0.53 m
Maintenance factor	0.80
Total luminous flux	13000.00 lm
Total power	598.0 W
Total power per area (9984.00 m ²)	0.06 W/m ² (7.12 W/m ² /100lx)

Evaluation area 1

Reference plane 1.1

\bar{E}_m	Horizontal
E_{min}	0.84 lx
E_{min}	0 lx
$E_{min}/\bar{E}_m (U_0)$	0.00
$E_{min}/E_{max} (U_d)$	0.00
Position	0.00 m

Type No. Make

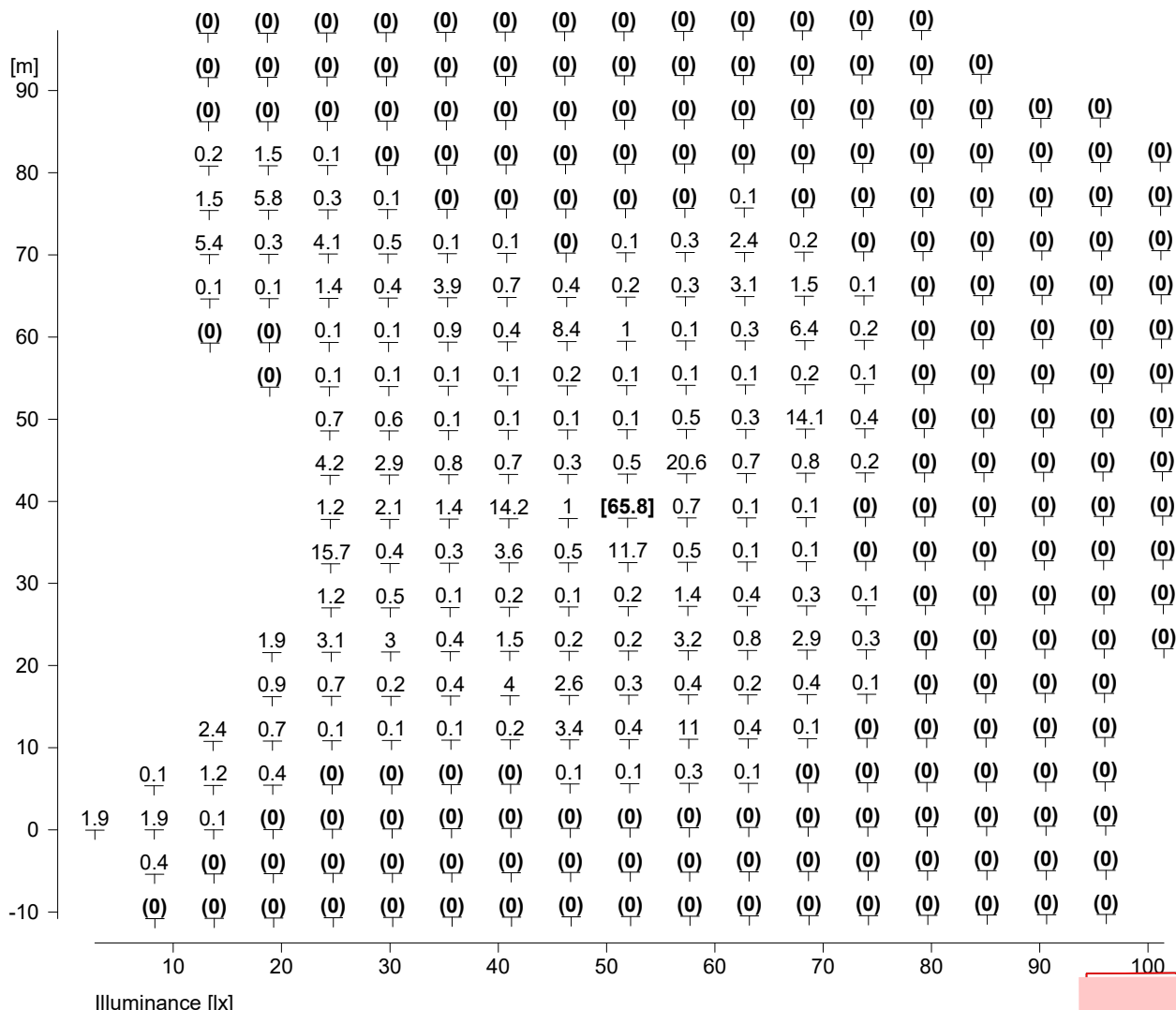
1	26 x	Collingwood
	Order No.	: BOL30x30-A
	Luminaire name	: BOL30x30
	Equipment	: 1 x LED - 23.00 W 23 W / 500 lm



2 Exterior 1

2.3 Calculation results, Exterior 1

2.3.1 Table, Reference plane 1.1 (E)



Height reference plane		: 0.00 m
Average illuminance	\bar{E}_m	: 0.8 lx
Minimum illuminance	E_{min}	: 0 lx
Maximum illuminance	E_{max}	: 65.8 lx
Uniformity U_o	E_{min}/\bar{E}_m	: 1 : 500.20 (0.00)
Diversity U_d	E_{min}/E_{max}	: 1 : 39115.67 (0.00)