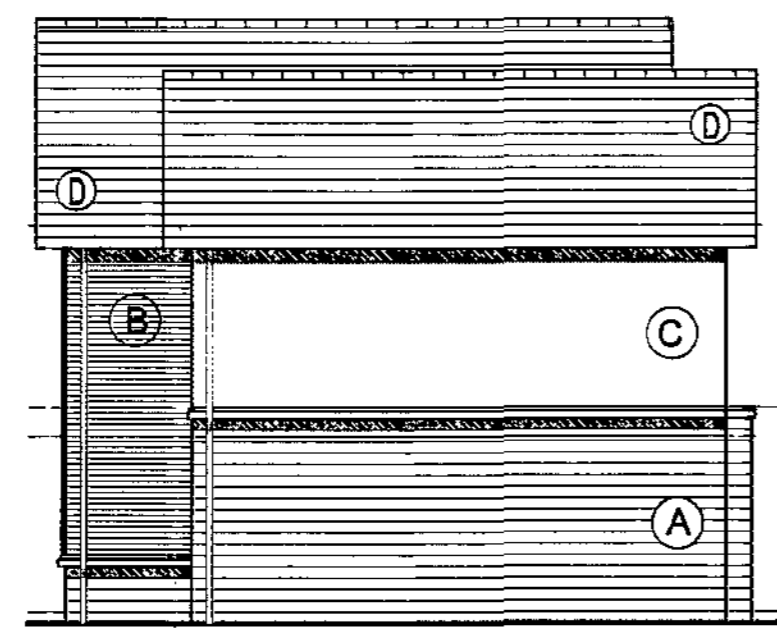
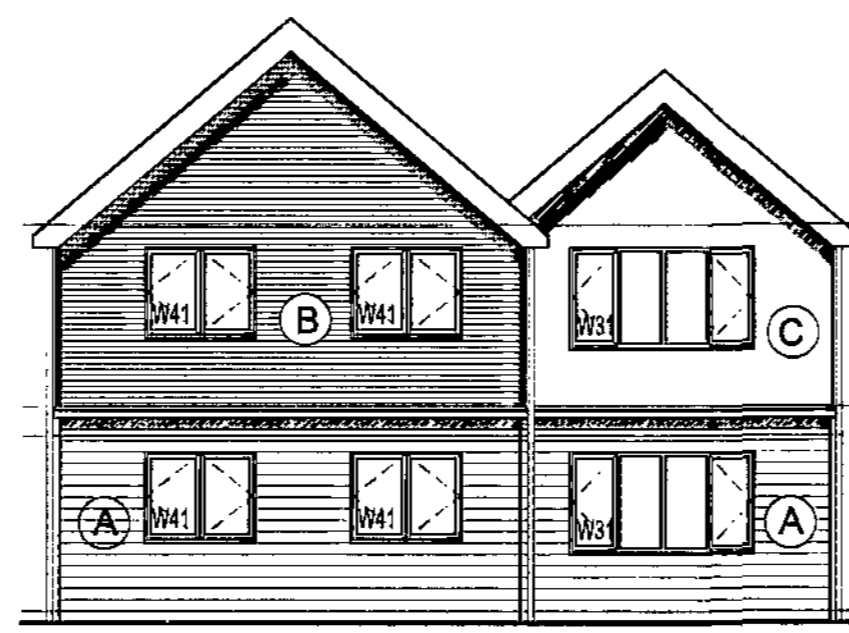




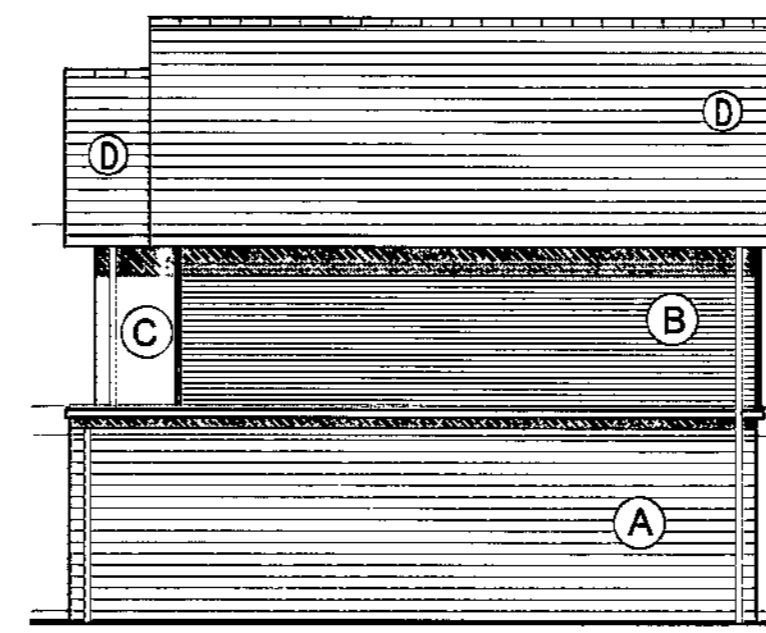
FRONT ELEVATION 1:100



SIDE ELEVATION 1:100



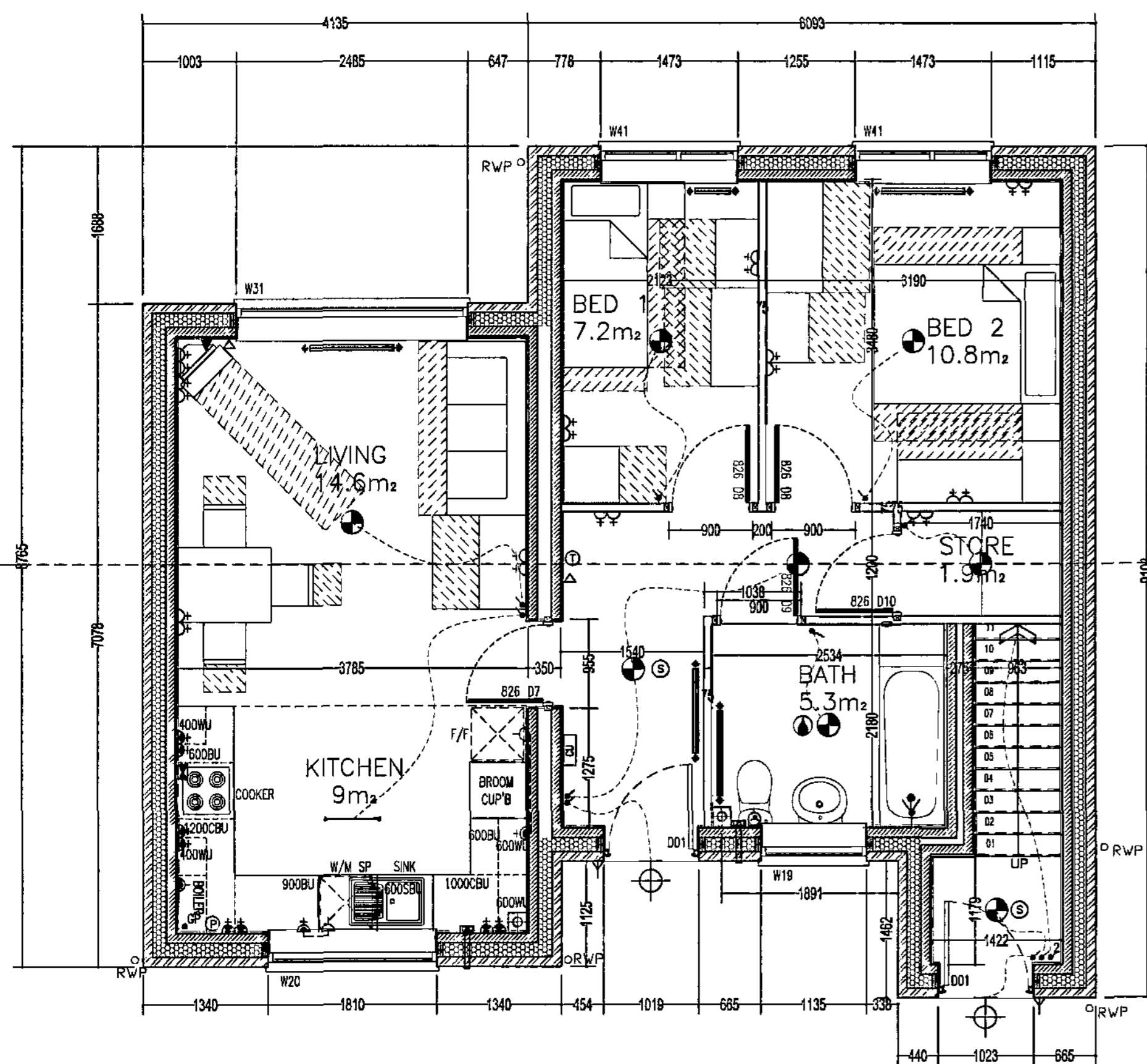
REAR ELEVATION 1:100



SIDE ELEVATION 1:100

- Materials**
- (A) Artificial Stonework - dressed Buff Black
 - (B) Western Red Cedar Boarding (Horizontal)
 - (C) Through Render Finish - Ivory
 - (D) Concrete Interlocking tiles - colour: Grey Slate
- Windows - UPVC Dark Admiral Grey (BS 18 B 25)
 Doors - Composite, painted black
 Eaves - Aluminium, Dark grey

SYMBOL	DESCRIPTION
[Symbol]	13 AMP 1PH SWITCHED SOCKET OUTLET
[Symbol]	13 AMP SWITCHED SOCKET OUTLET
[Symbol]	13 AMP SOCKET OUTLET
[Symbol]	13 AMP 1PH SWITCHED SOCKET OUTLET ABOVE WORKTOP
[Symbol]	13 AMP SWITCHED SOCKET OUTLET ABOVE WORKTOP
[Symbol]	13 AMP 1PH SWITCHED SOCKET OUTLET ABOVE WORKTOP CONTROLLING INSTALLED SOCKETS
[Symbol]	13 AMP SPUR UNIT
[Symbol]	13 AMP SWITCHED SPUR UNIT
[Symbol]	ONE WAY SWITCH (0V/1/0/0)
[Symbol]	TWO WAY SWITCH (0V/1/0/0)
[Symbol]	PULL CHORD SWITCH (0V/1/0/0)
[Symbol]	TELEPHONE POINT (0V/1/0/0)
[Symbol]	TELEPHONE POINT (0V/1/0/0)
[Symbol]	COOKER SWITCH (0V/1/0/0)
[Symbol]	SHOWER POINT (0V/1/0/0)
[Symbol]	CONSUMER SERVICE UNIT (0V/1/0/0)
[Symbol]	CEILING LIGHTING POINT - PENDANT TYPE
[Symbol]	DOWN LIGHTS - SEE COMPANY SPECIFICATION
[Symbol]	CEILING LIGHTING POINT WITH INTEGRATED ENERGY EFFICIENT FITTING WITH 40 LUMENS / CIRCUIT WATT (0V/1/0/0)
[Symbol]	EXTERNAL MOUNTED LIGHTING POINT - FRONT - OVER DOOR BULLHEAD (0V/1/0/0)
[Symbol]	FRONT - OVER DOOR BULLHEAD (0V/1/0/0)
[Symbol]	RENOVES SPRAYPROOF SAFETY LAMP FITTING
[Symbol]	CENTRAL HEATING PROOFWATER
[Symbol]	ROOM THERMOSTAT (012/728)
[Symbol]	DOOR ENTRY SYSTEM AS VAO 100/050
[Symbol]	CEILING MOUNTED EXTRACT FAN - ACTIVE SYSTEM (0V/1/0/0)
[Symbol]	WALL MOUNTED EXTRACT FAN
[Symbol]	3 PULL EQUALISE SWITCH FOR EXTRACT MARKED WITH FAN SYMBOL (ACTIVE SYSTEMS ONLY)
[Symbol]	CENTRAL FLUORESCENT LIGHT FITTING
[Symbol]	CENTRAL HEATING WIRING JUNCTION BOX
[Symbol]	FLUORESCENT
[Symbol]	SMOKE DETECTOR (0V/1/0/0)
[Symbol]	GAS POINT
[Symbol]	SHOWER HEAD

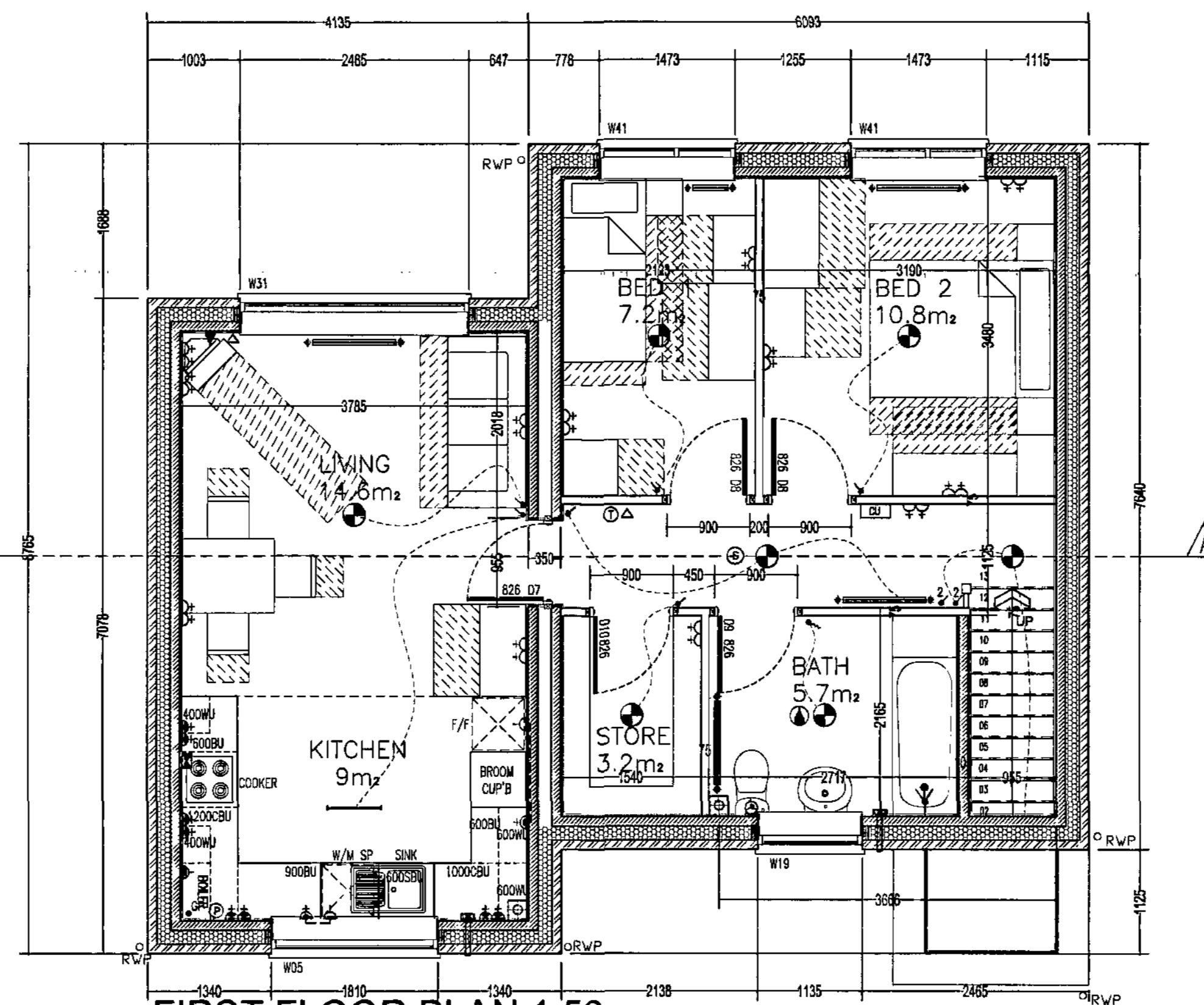


GROUND FLOOR PLAN 1:50

Flat Type A1 - 2B3P Apartment

Plot Numbers: 1.

Gross internal floor area = 60sq.m

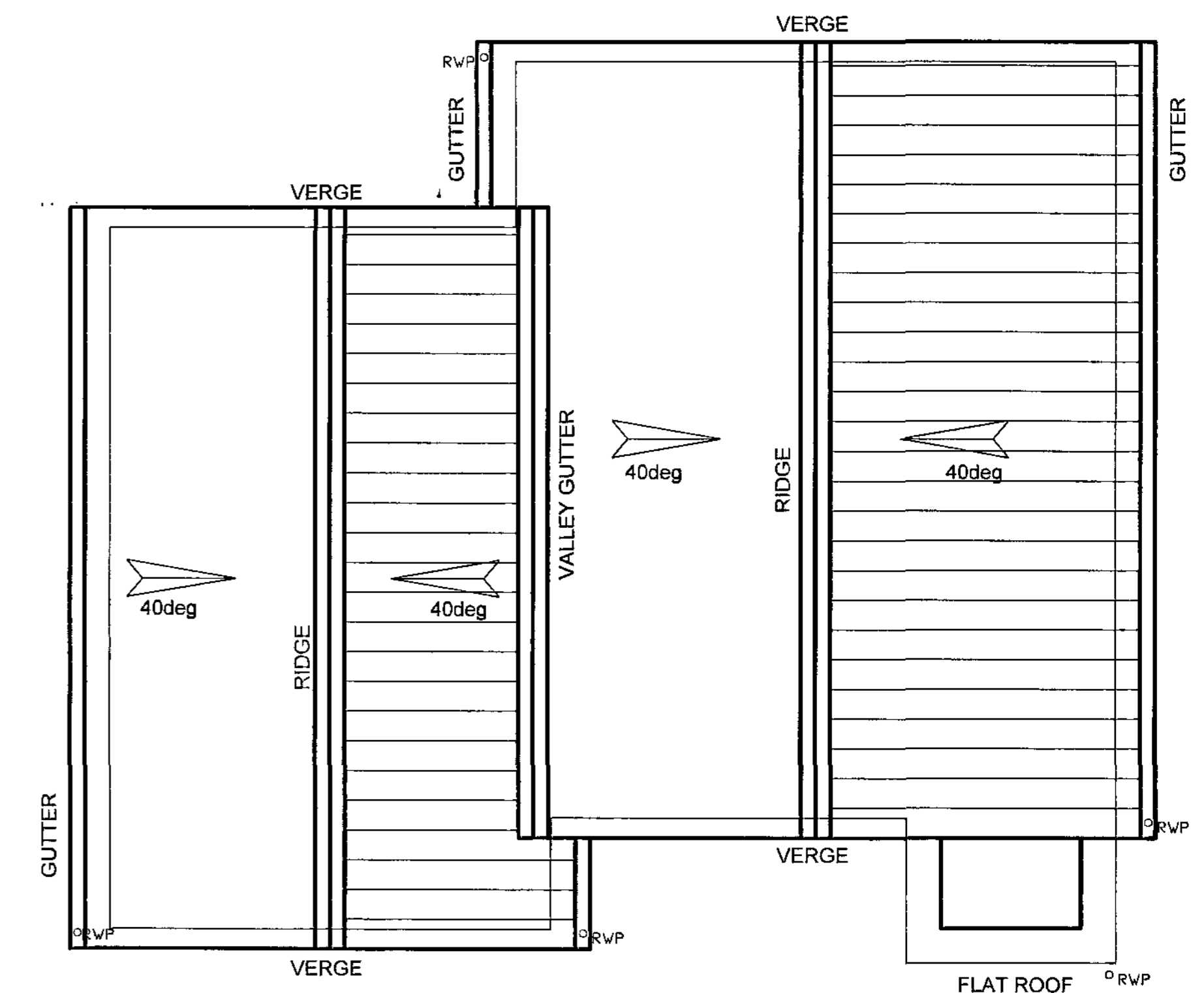


FIRST FLOOR PLAN 1:50

Flat Type A2- 2B3P Apartment

Plot Numbers: 2.

Gross internal floor area = 64.2sq.m



ROOF PLAN 1:50

Please Note!
 Drawing to be read in conjunction with SYHA drawing numbers:
 AM16-103 Proposed Site Plan
 AM16-104 Street Elevations Sheet 1
 AM16-105 Street Elevations Sheet 2

General Notes	Revisions	BY	DATE
1) To be read in conjunction with Specification / Project Drawings. 2) Do not scale from this drawing. Check all dimensions on site and report any discrepancies to the architect. 3) All dimensions are in millimetres unless otherwise stated. 4) All structural and drainage work to be to the satisfaction of DMR on site.	Bathroom door at GF changed to open outwards. 23.02.2010		

Drawing Status
 TENDER

SYHA Architects
 43-47 Wollington Street
 Sheffield S1 4NF
 Tel: 0114 2305 290
 Fax: 0114 2305 290
 www.syha.co.uk

Project Name: Worksbridge Phase 2
 Date: 18/11/2009
 Client: SYHA Development Section
 Scale: 1:50 / 100
 Drawing No: 4MR-201
 Rev: A