



Assembly Technicians Learning Facility

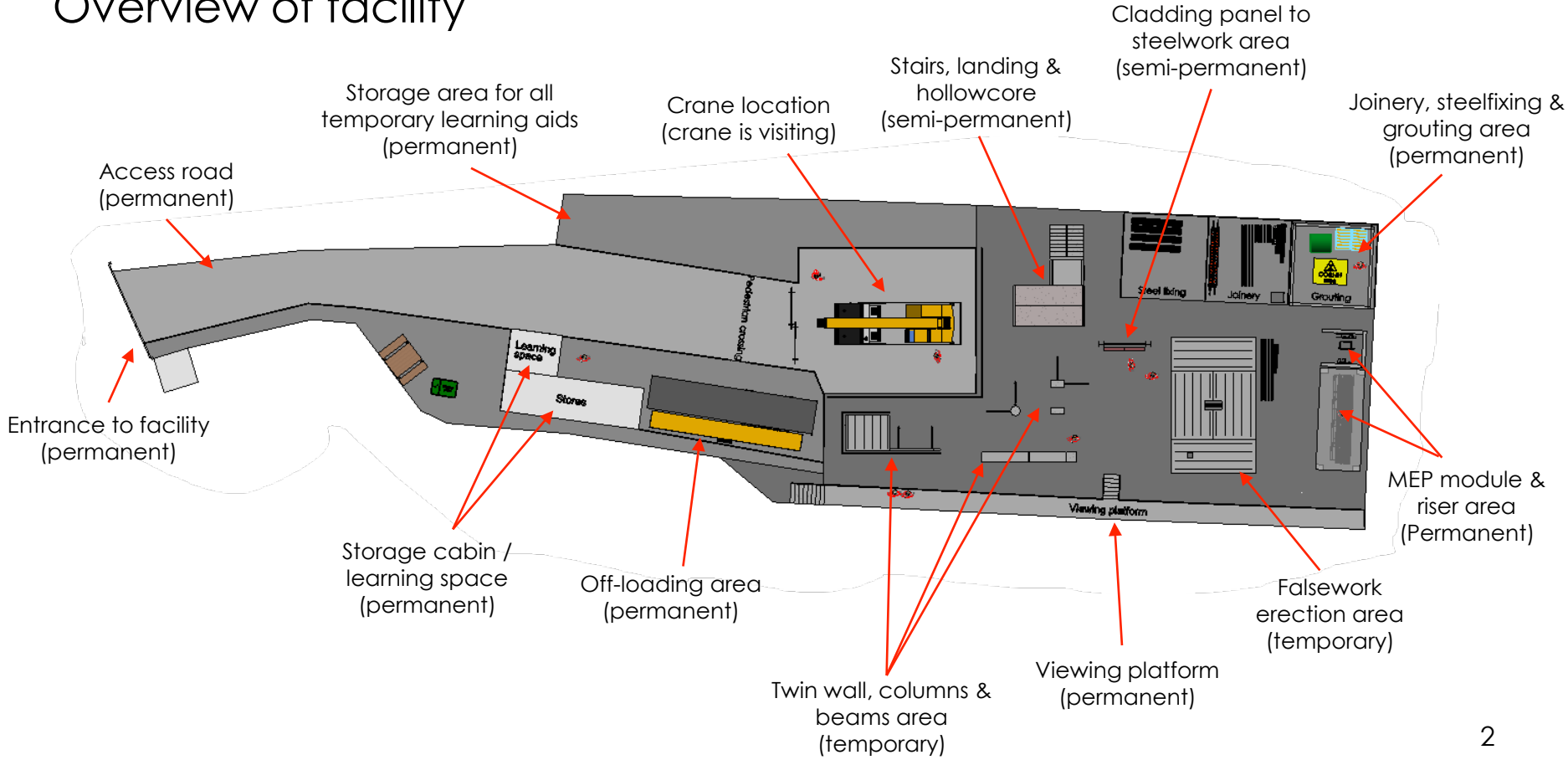
BARNSLEY COLLEGE

PLANNING DOCUMENTS

AUGUST 2023

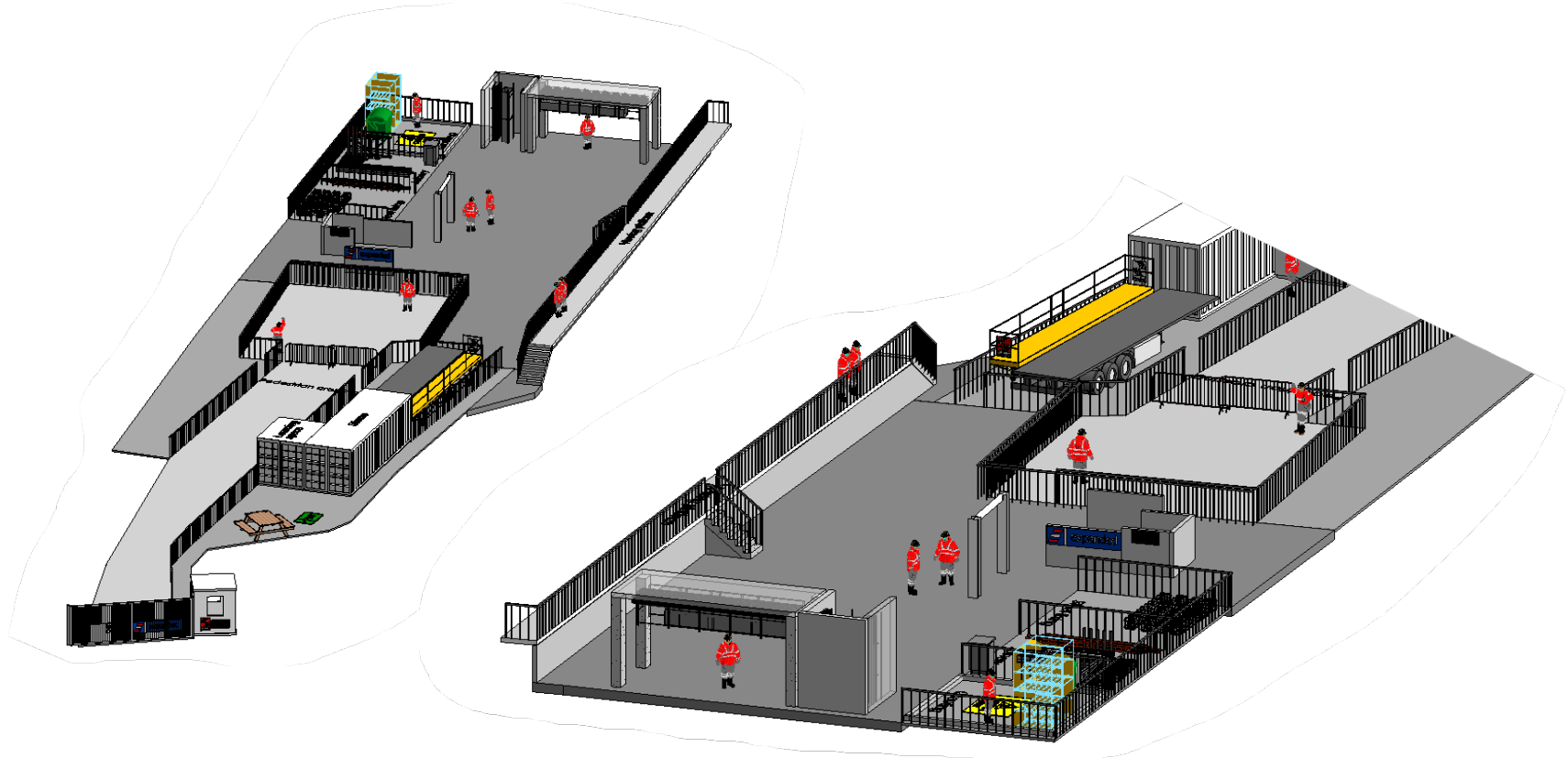


Overview of facility



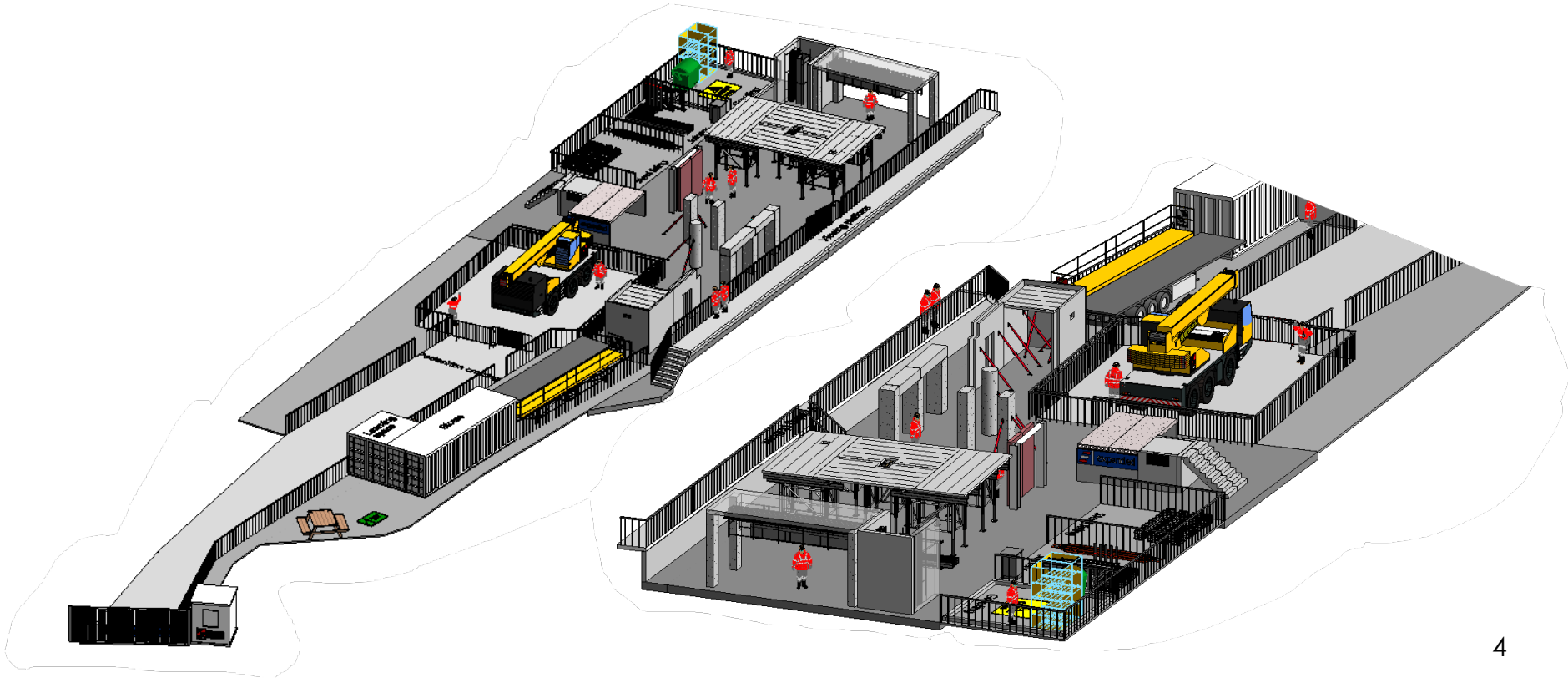


Permanent structures



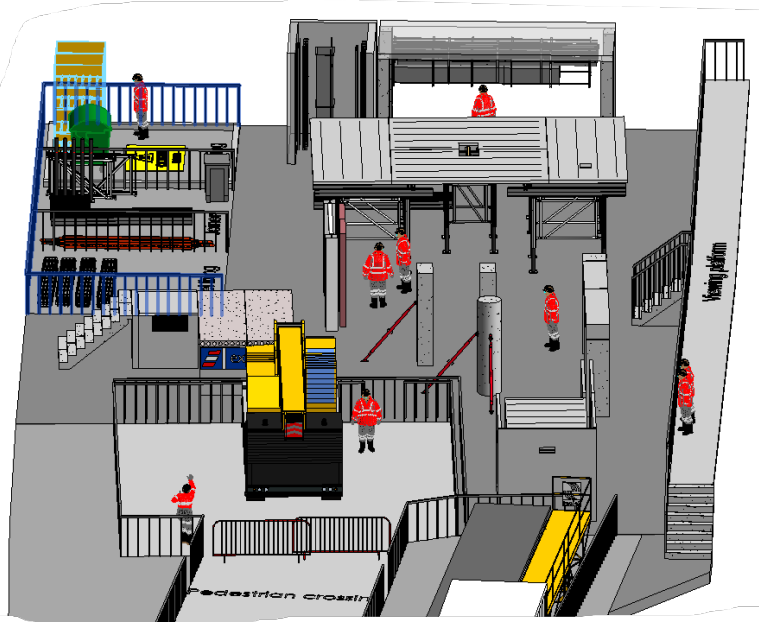
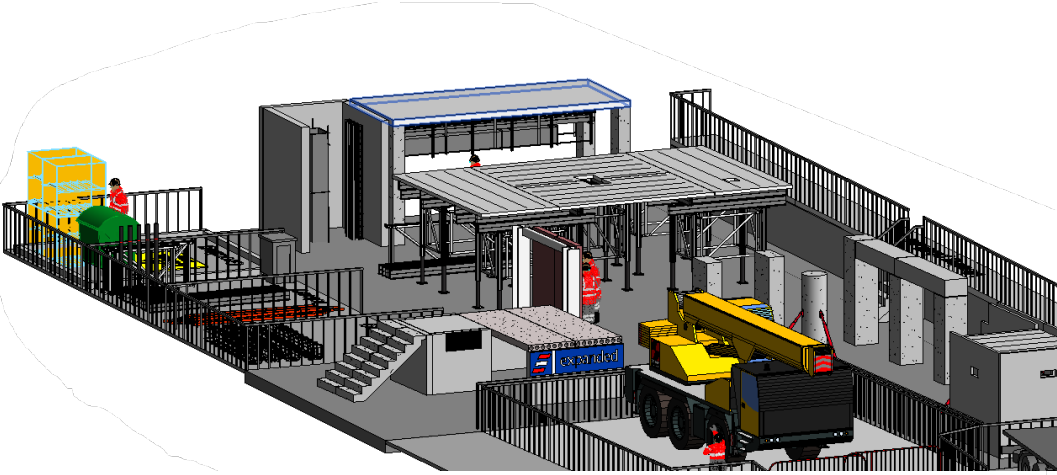


Facility with all temporary elements erected



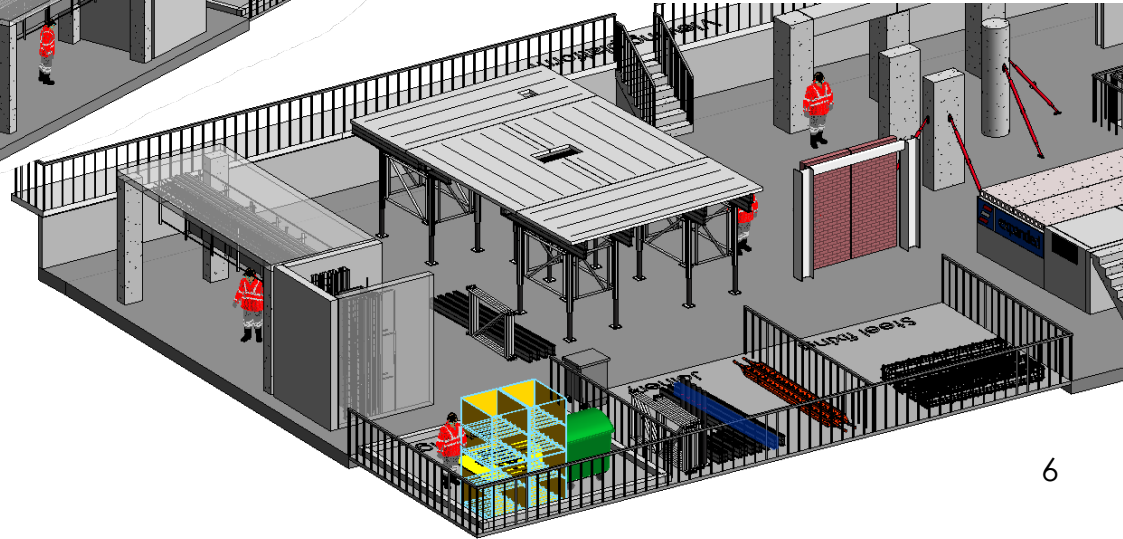
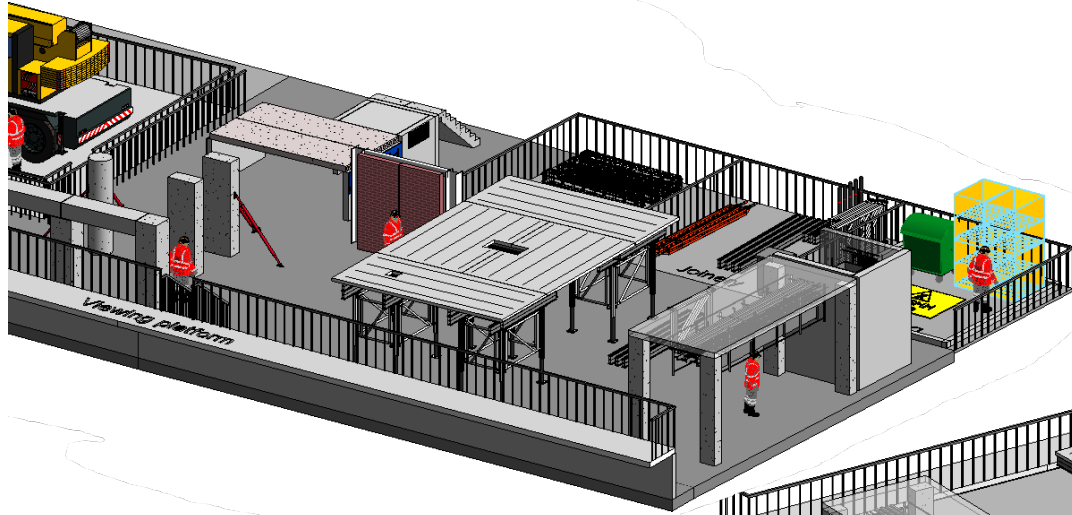


Additional views of facility



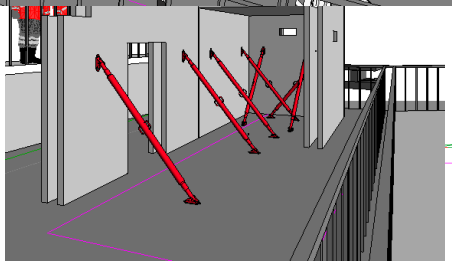
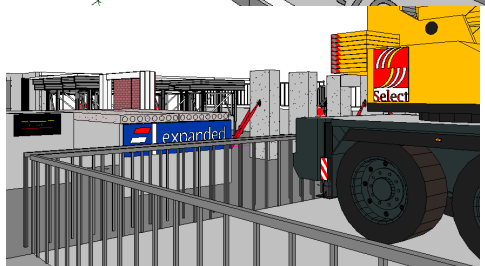
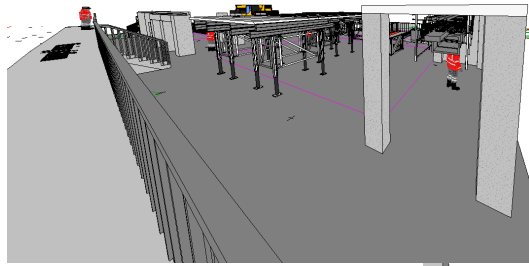
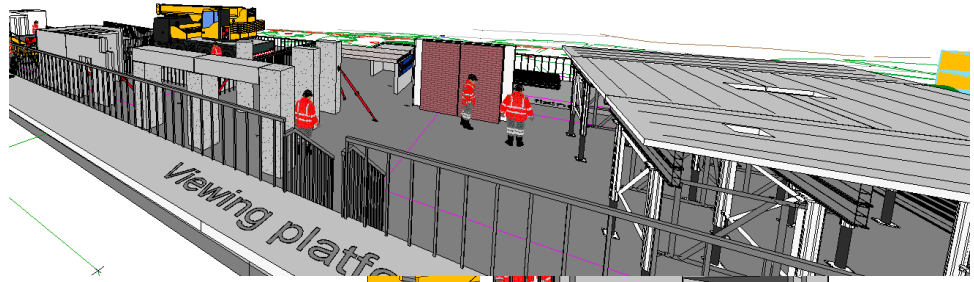
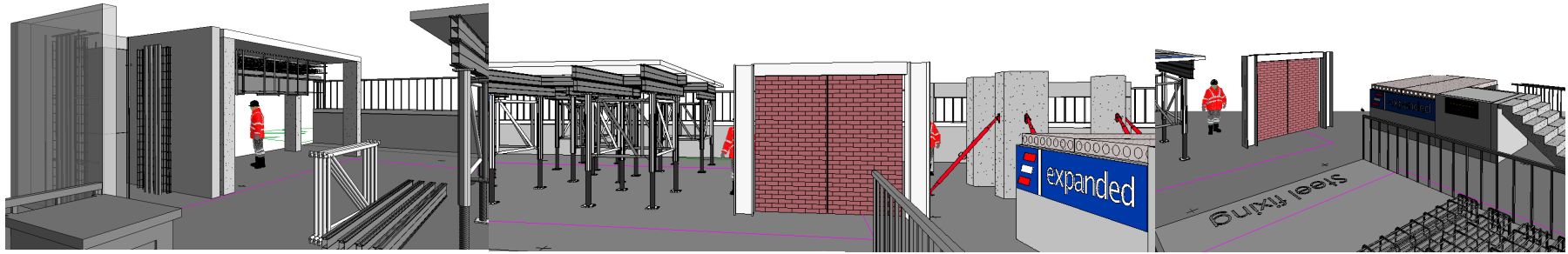


Additional views of facility



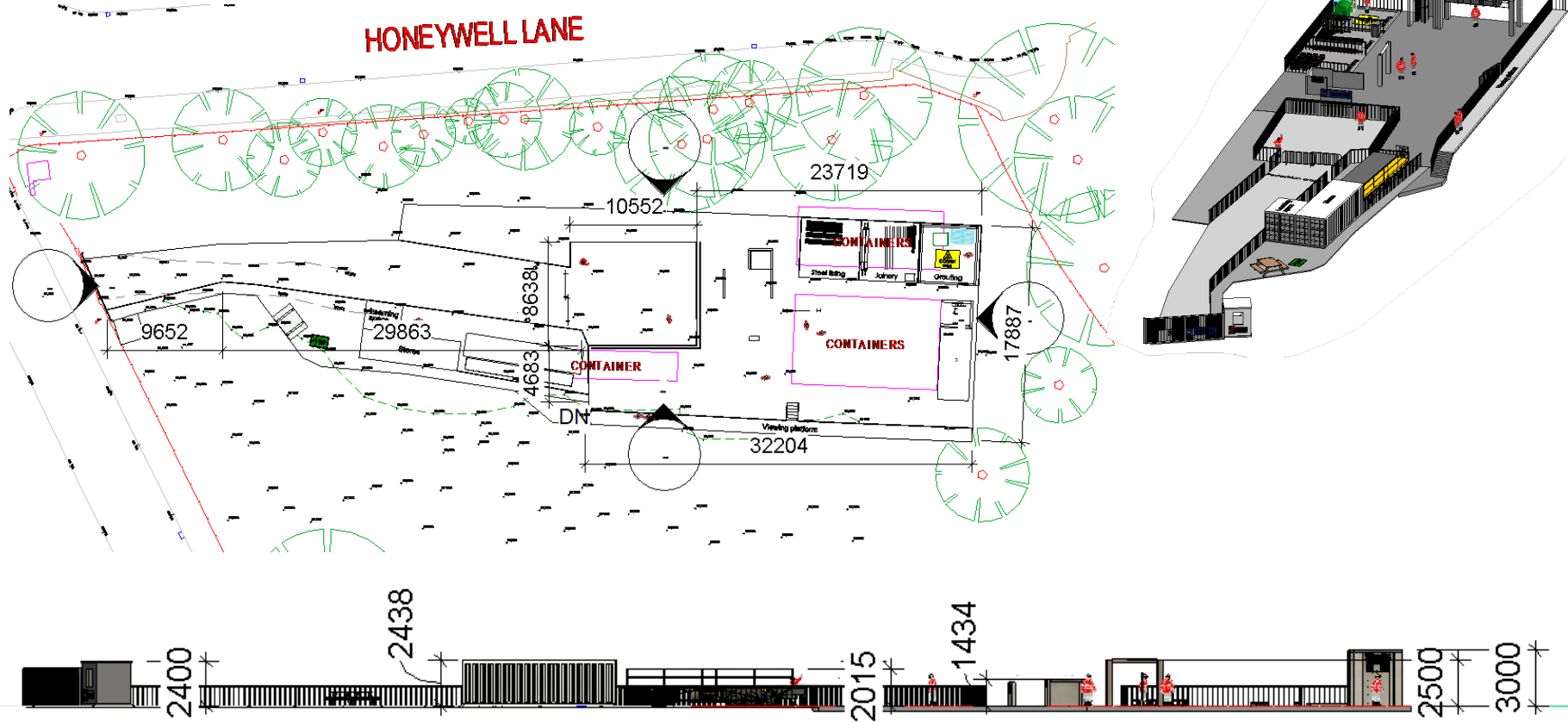


1st Person views



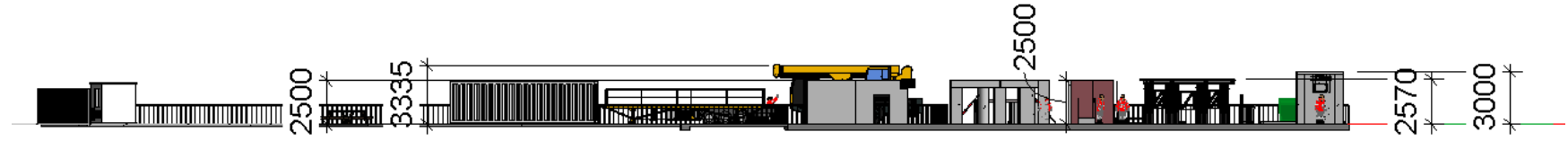
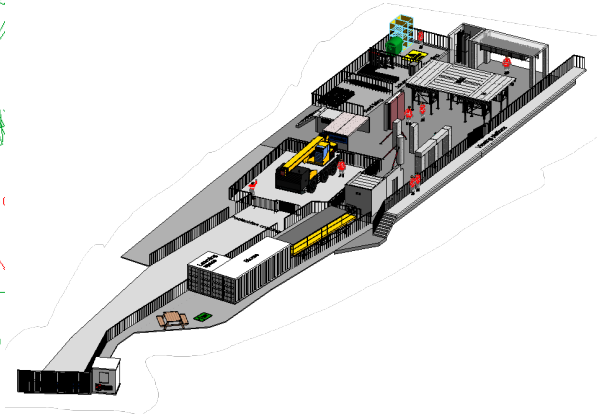
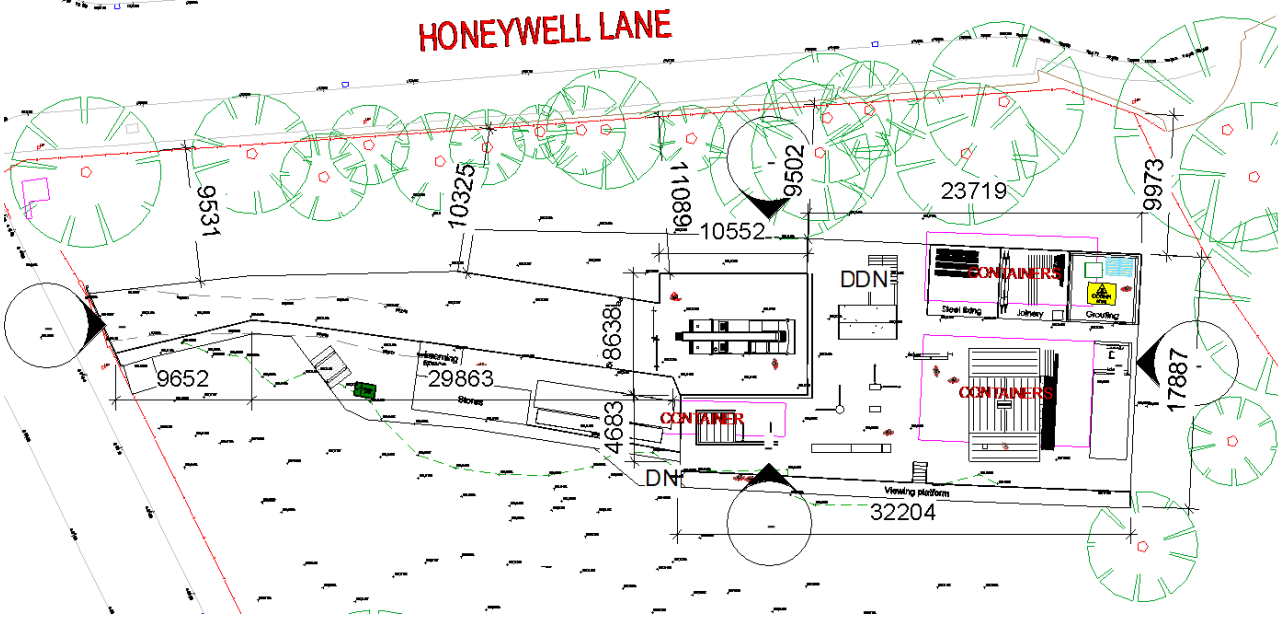


Planning drawings – no temporary elements erected





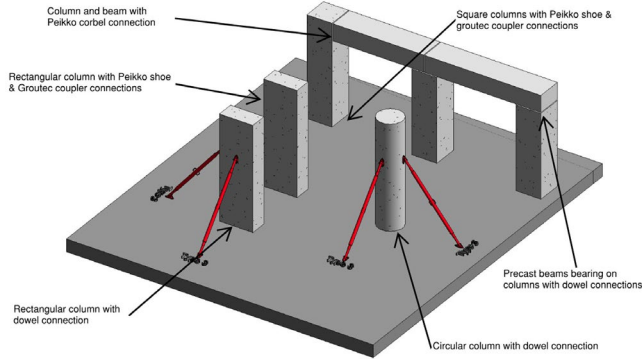
Planning drawings – with all temporary elements erected



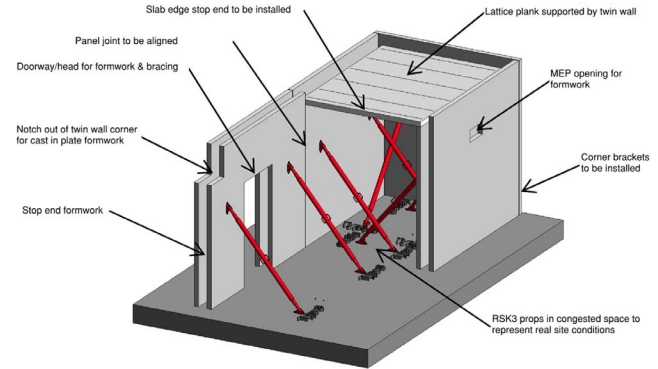
Supplementary information



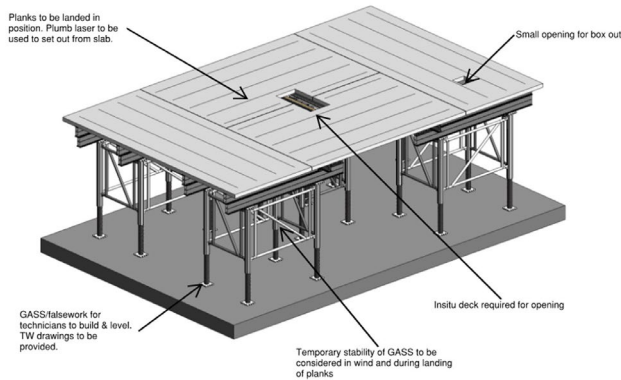
Precast columns & beams



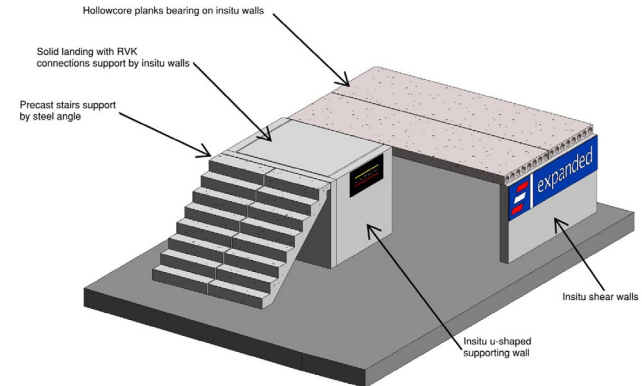
Twin wall & lattice plank



Lattice on GASS



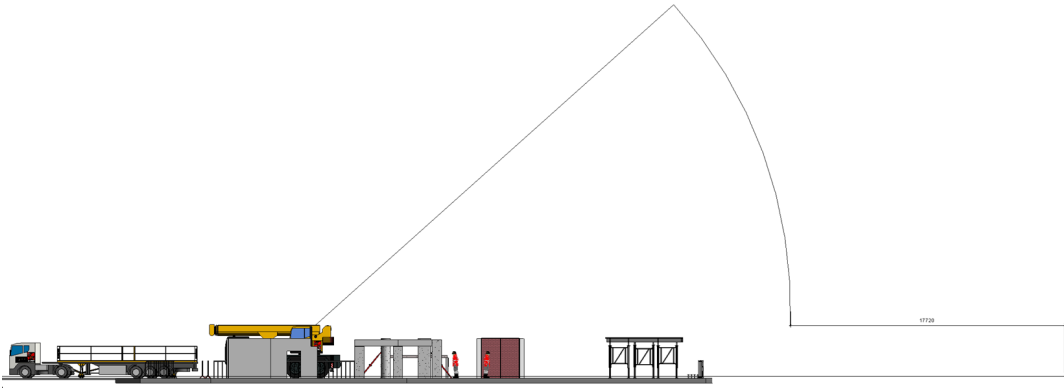
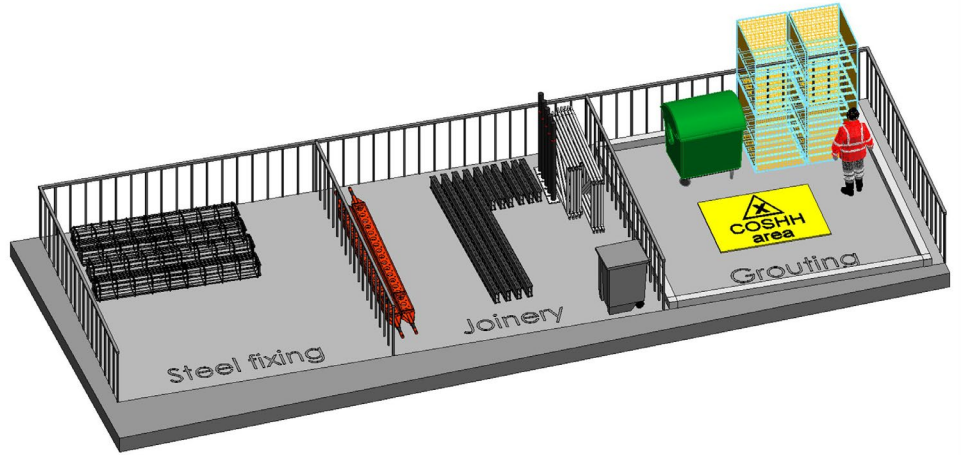
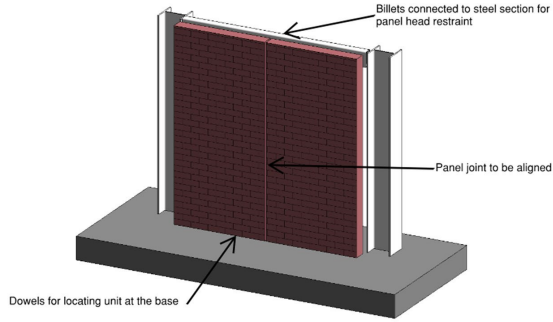
Stairs, solid landing & hollowcore planks





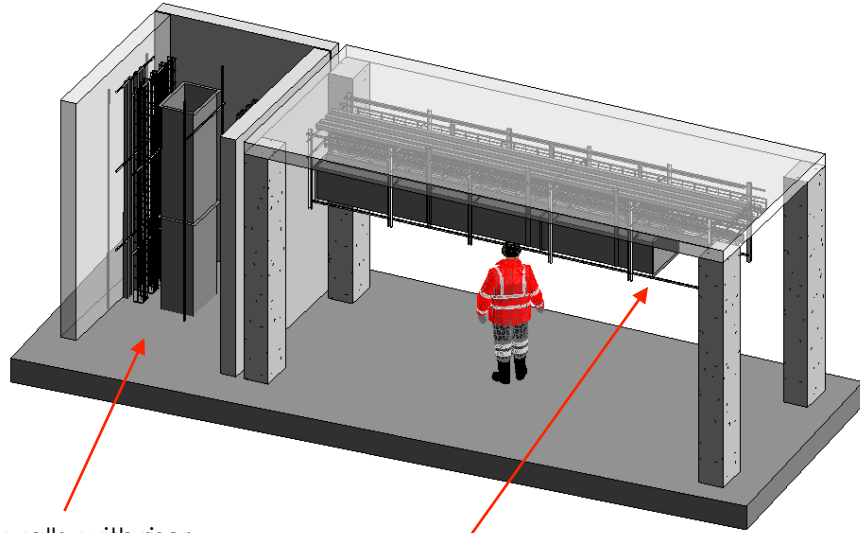
Supplementary information

Single skin cladding



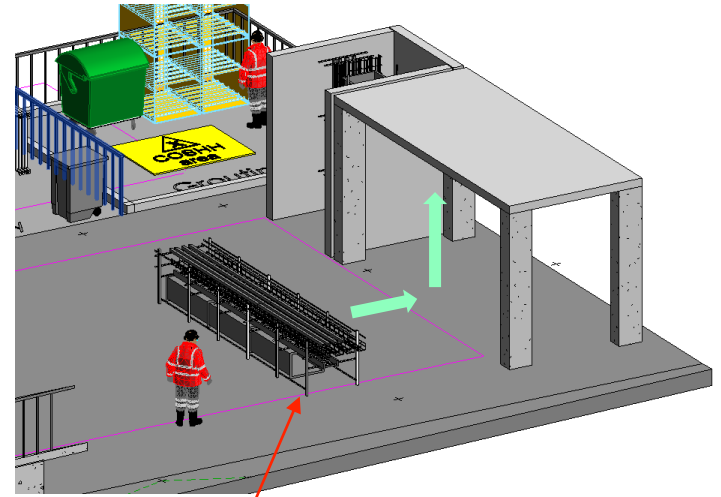


Supplementary information



Solid walls, with riser construction learning space

Permanent soffit with cast in fixings to allow module connection



MEP module will be transported from the slab towards the soffit area, elevated and fixed to the soffit - replicating real life construction sequence.

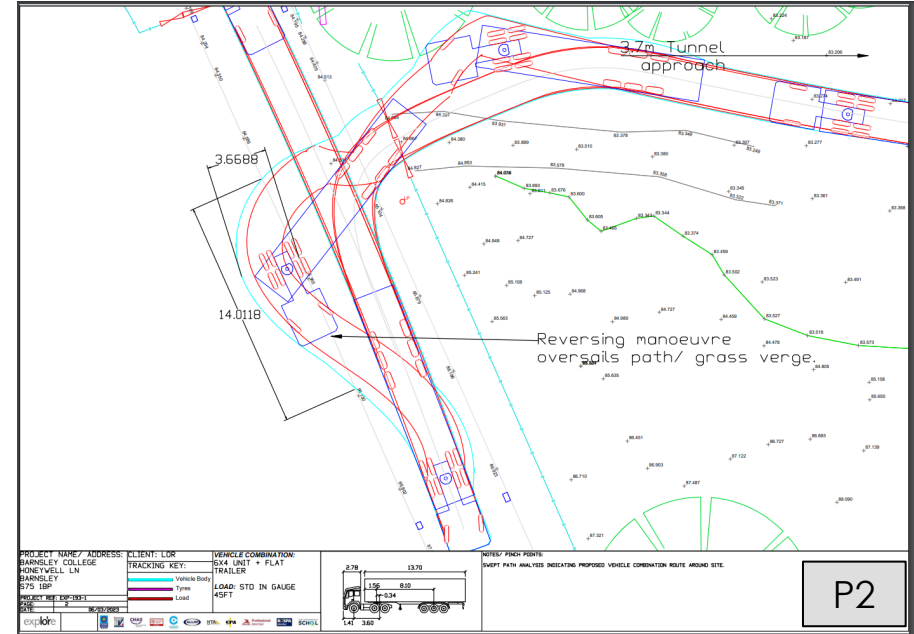
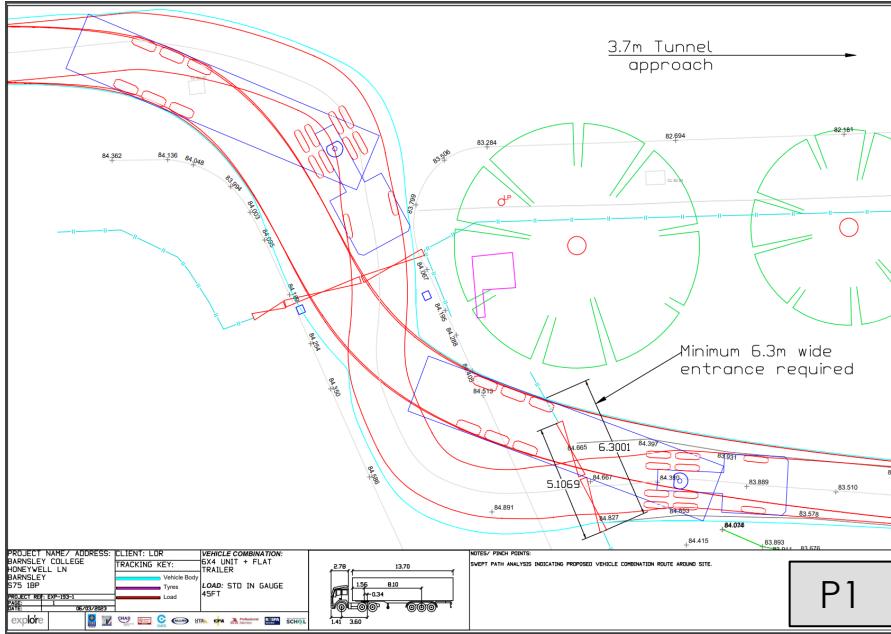


Supplementary information – existing site



- No trees to be removed
- Existing area to be developed (925m²)
- Existing fence to remain / be replaced with new like for like where required

Supplementary information – swept path into facility entrance



P1 – Driving in
Additional widening required to facility entrance

P2 – Reversing in from college access road
Remedial works across college footpath. Alternate option keeping to road would be to widen fence/gate on near side, but it would be more work than widening gate and driving in forward as per P1.





THE POWER OF EXPERIENCE

LAINGOROURKE.COM



Thank you

All materials contained in this presentation are copyright of Laing O'Rourke.