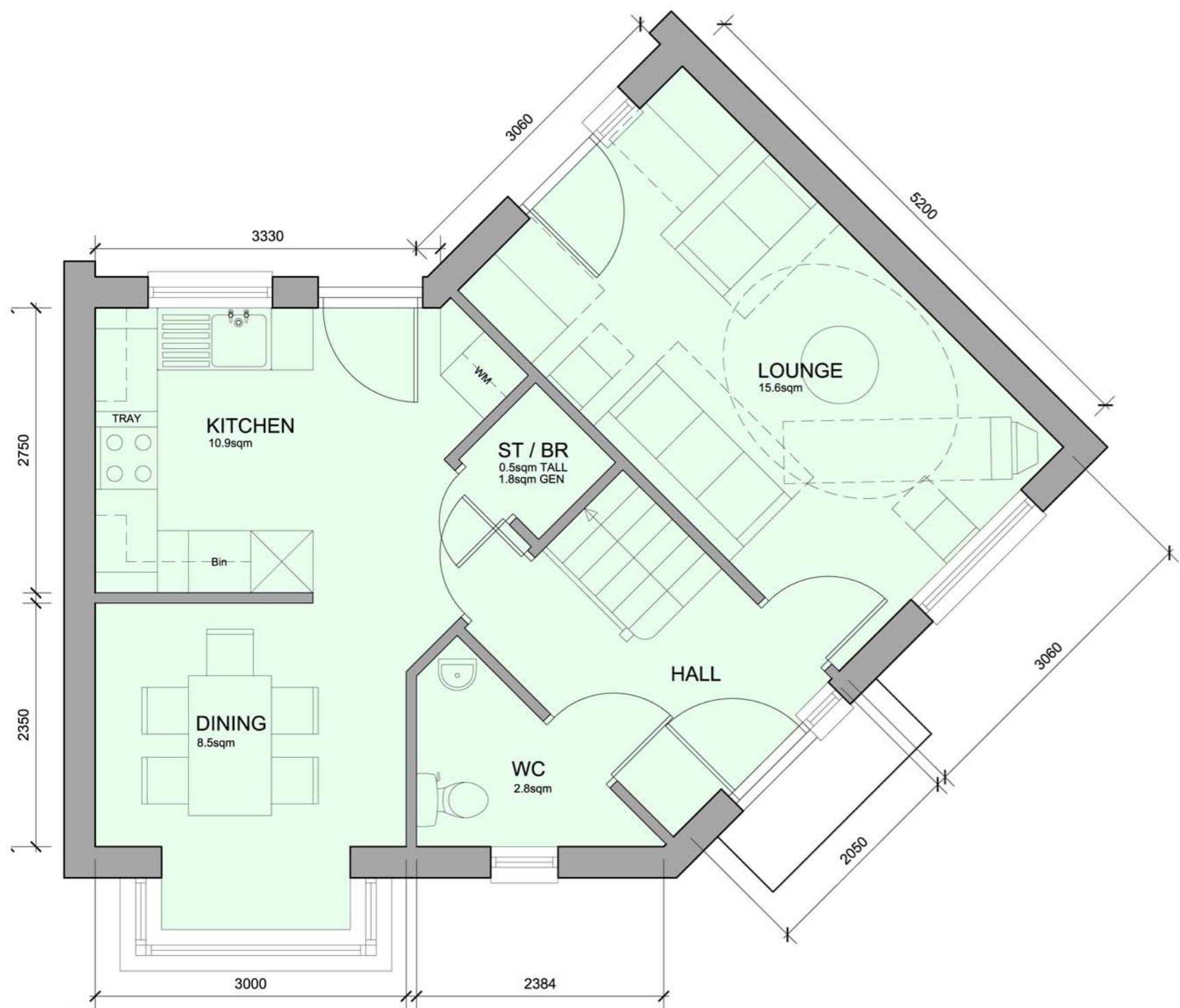


The general contractor is responsible for the verification of all dimensions on site and the architect is to be informed of any discrepancy.

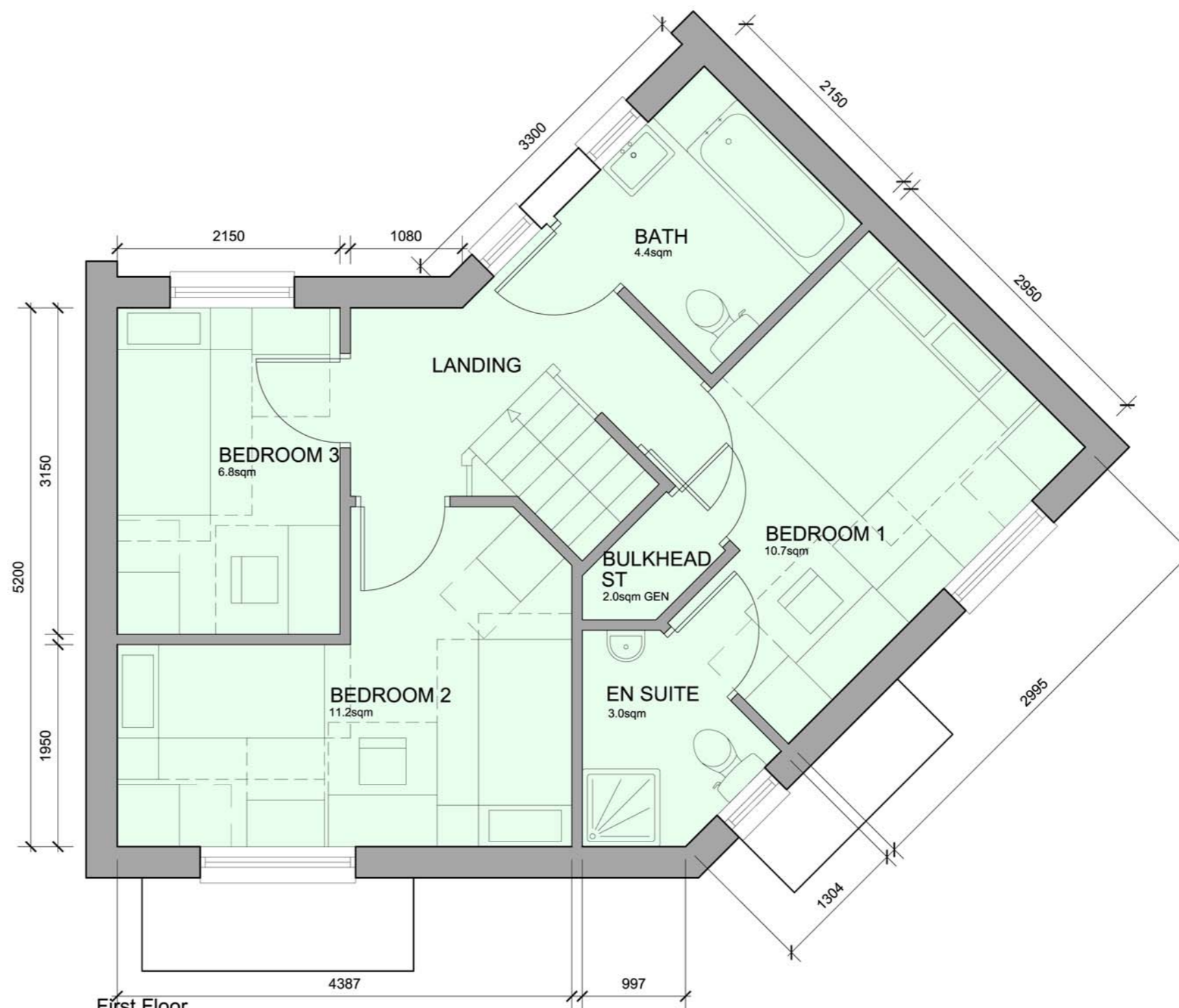
The status of information contained in a computer copy of this drawing shall be limited to that conveyed by the paper copy.

Revisions:

- A. 25.07.08 CO Kitchen/ Dining layout revised and en-suite added
- B. 28.07.08 CO Window arrangement adjusted to accommodate internal furniture layout more effectively.
- C. 01.08.08 C.ODDY GA plan amended and furniture altered to suit.
- D. 25.09.08 C.ODDY GA plan amended and furniture altered to suit.
- E. 07.10.08 C.ODDY Canopy amended.



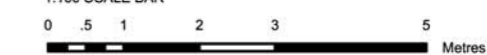
Ground Floor
Plot Size 93 sq.m.



First Floor

1. FL Quality facing brickwork
2. Through coloured render system (ie. Sto / Weber or similar approved)
3. 25mm x 125mm horizontal timber PMV boarding on vertical tanalized softwood battens. Timber to be heat treated European Redwood, from certified managed sustainable forests (ie. Finnforest Thermowood or similar approved)
4. Stained timber framed double glazed windows
5. Interlocking concrete tiled roof
6. Soldier course detail
7. Projecting entrance canopy with pressed metal colourcoated edge detail
8. Parapet wall with pressed metal capping flashed over from roof.
9. galvanized steel balustrade
10. colourcoated pressed metal panel

1:100 SCALE BAR



1:50 SCALE BAR



Entrance Elevation / side



Rear Elevation/ gable elevation



Scale 1:100/ 1:50 @ a2

Date July 2008

Drawn RJJ

Dwg No 2121-015-124E

3b5p - Corner Unit
New Lodge Crescent, Barnsley
Yorkshire Housing

