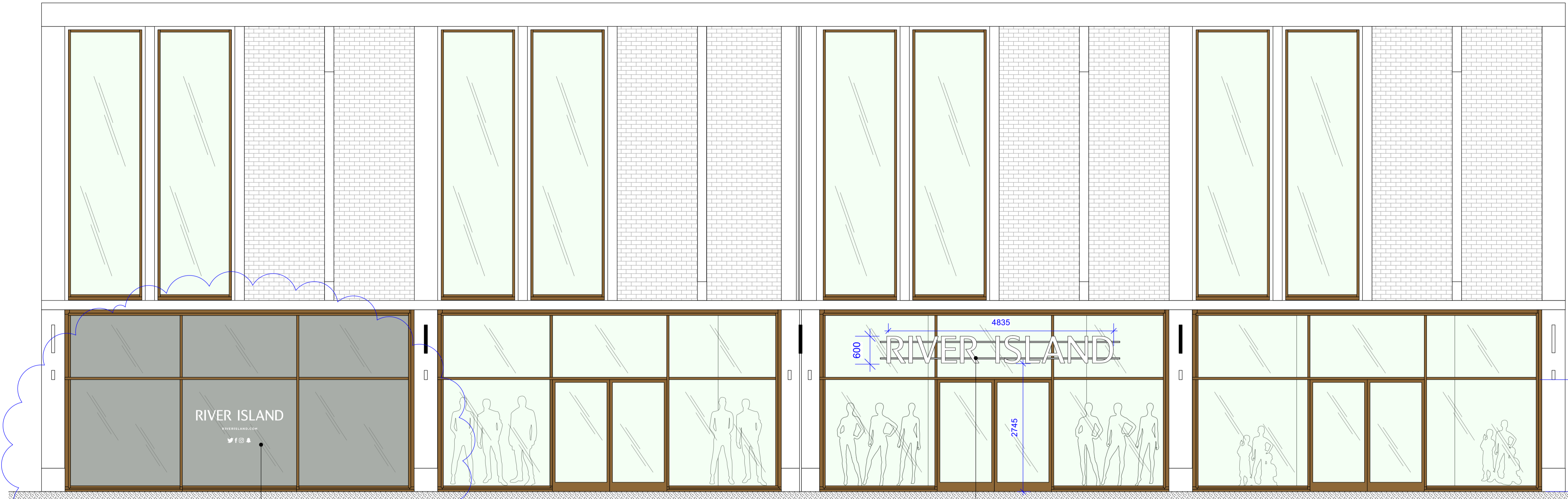


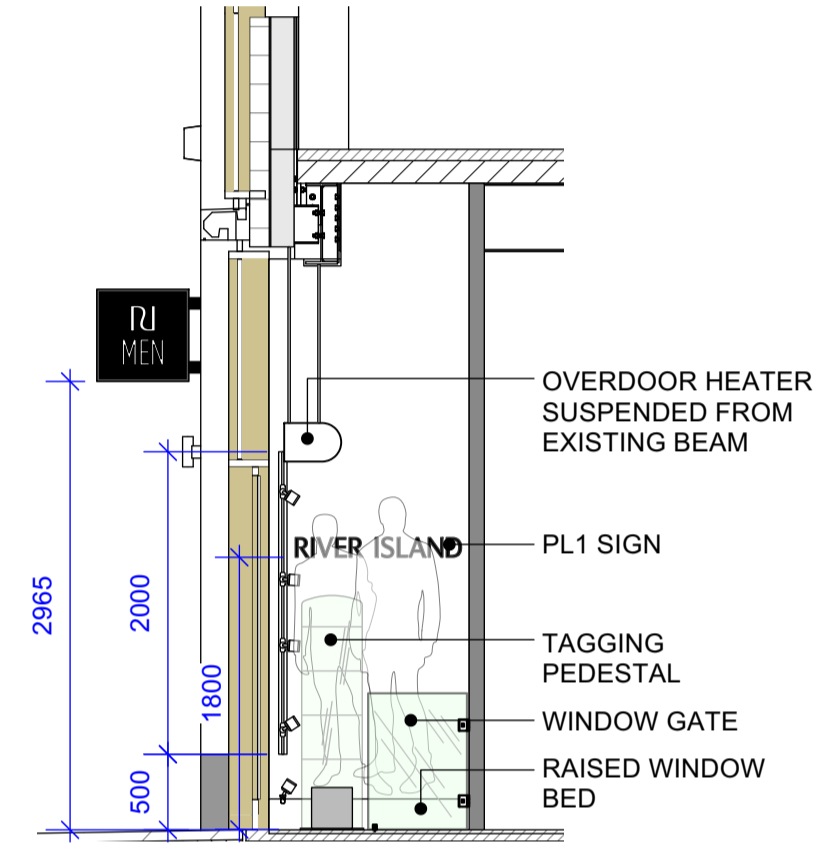
M L K J H G F



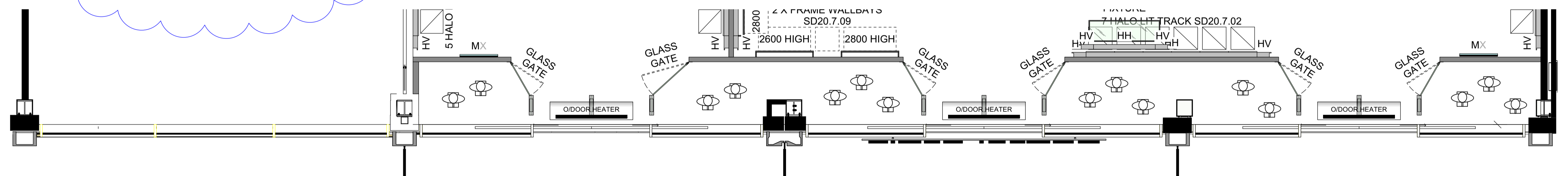
SHOPFRONT ELEVATION

VINYL TO INSIDE FACE OF GLAZING. DESIGN TBC

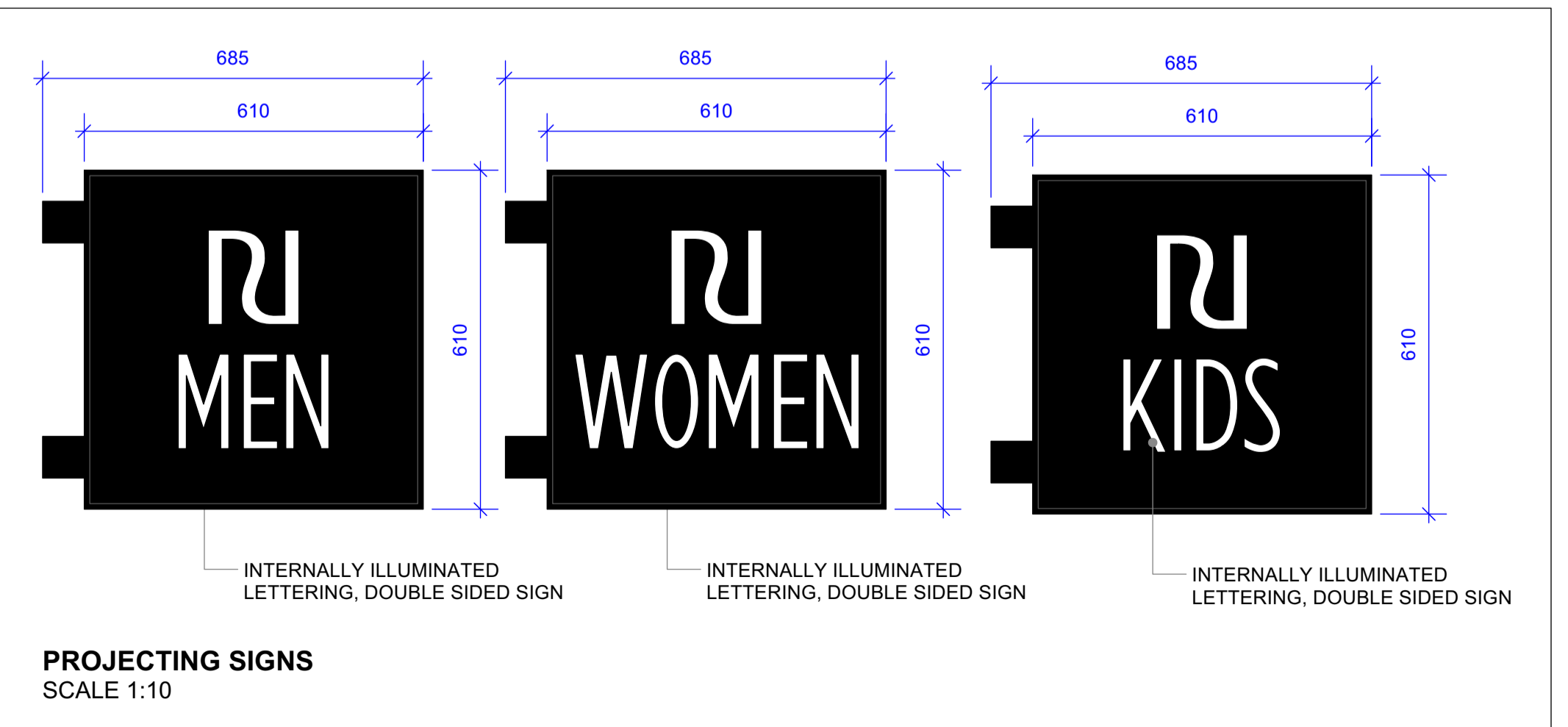
INDIVIDUALLY ILLUMINATED LED LETTERS FIXED TO STAINLESS STEEL BARS FIXED TO EXISTING GLAZING FRAME. WEIGHT INCLUDING FIXING BARS 55KG



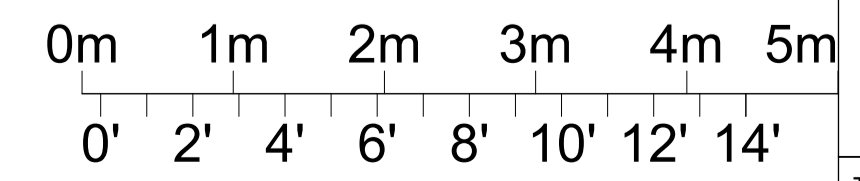
SECTION AA



SHOPFRONT PLAN



PROJECTING SIGNS
SCALE 1:10



C	WINDOW GRAPHICS UPDATED	05.08.21	PG
B	NOTES AND DIMS ADDED	30.07.21	PG
A	SECTION AA ADDED	29.07.21	PG
REVISIONS	DESCRIPTION	DATE	INITIAL

RIVER ISLAND

FINISHES	GLAZING CHANNEL	ENTRANCE SHUTTER	TILE	SHOPFRONT SIGN
	N/A	N/A	N/A	INTERNALLY ILLUMINATED WHITE ACRYLIC LETTERS WITH BLACK SIDES
PROJECT			CHEK'D	DATE
UNIT SU7 THE GLASSWORKS BARNSELEY				02.06.21
			SCALE	1:50 @ A1
TITLE			DRAWN BY	PG
SHOPFRONT			DRAWING NO.	1600.21.01 C

GRD FLOOR OCCUPANCY

SALES AREA (M ²)	388
SALES AREA / 2	194
No. FITTING ROOMS	8
BOH STAFF NUMBER	5
TOTAL NUMBER OF PEOPLE	207
TOTAL NUMBER OF PEOPLE x 5mm	1035
CLEAR OPENING	1035
DOOR LEAF SIZE(S)	1100

RACKING LAYOUT LEGEND

1975 X 425 (A)	TYPE A - NON CLOTHING HANGER BINS
1975 X 425 (B)	TYPE B - SALES TICKETS & OTHER POS
1975 X 425 (C)	TYPE C - HANGING FOOTWEAR
1975 X 425 (D)	TYPE D - BAGS / PURSES
1975 X 425 (E)	TYPE E - MESH PANELS FOR ACCESSORIES
1975 X 425 (F)	TYPE F - BOXED FOOTWEAR
1975 X 425 (G)	TYPE G - CLOTHING - SINGLE BAYS
1975 X 425 (H)	TYPE H - CLICK AND COLLECT

DOOR SCHEDULE

DOOR	DIMS	FD30S INCL SIGNAGE	FD60S INCL SIGNAGE	DOOR CLOSER	PUSH PLATE, KICKPLATE, 'D' HANDLE	AMTICO TO FACE	DOC M VISION PANEL	LOCK	COMMENTS
1									
2									
3									
4									
5									
6									
7									
8									
9									
10									
11									
12									
13									
14									
15									
16									
17									
18									
19									
20									

STATUTORY NOTES

FIRE ALARM
 CONTRACTOR TO ALLOW FOR INSTALLATION OF A FIRE ALARM SYSTEM WHICH COMPLES WITH CURRENT STANDARDS OF BS 5839-1:2017.
 FIRE ALARM TO BE DESIGNED TO A CATEGORY TO SATISFY BUILDING CONTROL & LANDLORD REQUIREMENTS.
 SYSTEM TO BE COMPATIBLE WITH & INTERFACED TO THE LANDLORDS SYSTEM IF APPLICABLE.
 THE FIRE ALARM ACTIVATION MUST PROVIDE IMMEDIATE AUTOMATIC SHUTDOWN OF ALL VENTILATION PLANT, OPERATE ANY SMOKE CONTROL SYSTEMS, TURN OFF ANY HIGH VOLTAGE LIGHTING, ANY SIGNIFICANT NOISE EMITTING SOURCE AND RELEASE DOOR MAGNETIC LOCKS WITHIN THE UNIT.
 THE FIRE ALARM SHOULD BE ACTIVATED UPON THE OPERATION OF SPRINKLERS, MANUAL CALL POINTS OR SMOKE HEADS TO SATISFY BUILDING CONTROL & LANDLORD REQUIREMENTS.
 CALL POINTS INSTALLED IN ACCORDANCE WITH BS 5839-1:2017.
 LAYOUT IN ACCORDANCE WITH THE CURRENT FIRE STRATEGY.

EMERGENCY LIGHTING
 EMERGENCY LIGHTING HAS BEEN DESIGNED TO THE CURRENT STANDARDS OF BS 5266-1:2016.
 CONTRACTOR TO ALLOW FOR INSTALLING EMERGENCY LIGHTING TO ALL AREAS INCLUDING ESCAPE ROUTES.
 THE ESCAPE ROUTES & EXITS SHOULD BE CONSPICUOUSLY MARKED WITH ILLUMINATED DIRECTIONAL EXIT SIGNS.
 WHERE THERE ARE DISPLAY FEATURES OR STRUCTURAL OBSTRUCTIONS ADDITIONAL SIGNAGE MAY BE REQUIRED.

ELECTRICAL INSTALLATION
 ALL WIRING IS TO BE INSTALLED TO AND COMPLY WITH IET WIRING REGULATIONS 18th EDITION BS 7671:2008, AMENDMENT 3:2015.

SPRINKLERS
 CONTRACTOR TO ALLOW FOR A FULLY AUTOMATIC SPRINKLER SYSTEM DESIGNED AND INSTALLED IN ACCORDANCE WITH LPC RULES FOR AUTOMATIC SPRINKLER INSTALLATIONS 2015, INCORPORATING BS EN 12845 AND RELEVANT TECHNICAL BULLETINS.
 THE SPRINKLER HEADS SHOULD BE QUICK RESPONSE TYPE WITH A RESPONSE TIME INDEX (RTI) OF NOT MORE THAN 50 (M 51)2, PER 2.3.7.

SPREAD OF FLAME
 ALL WALLS AND CEILINGS TO SALES AREA TO BE CLASS 1 SPREAD OF FLAME.
 CIRCULATION ROUTES TO BE CLASS 0 RATING.
 ANY PENETRATIONS THROUGH DESIGNATED FIRE SEPARATING ELEMENTS TO BE FITTED WITH FIRE DAMPERS AND FIRE STOPPED AS REQUIRED.
 VENTILATION DUCTWORK DESIGN TO INCLUDE SUITABLE FIRE DAMPERS, SECURED INDEPENDENTLY TO THE FIRE SEPARATING ELEMENT WHICH IT PASSES THROUGH.
 ALL FIRE DAMPER INSTALLATIONS SHOULD BE PROVIDED WITH ADEQUATE MEANS OF ACCESS TO ALLOW PERIODIC INSPECTION, TESTING AND PREVENTATIVE MAINTENANCE.

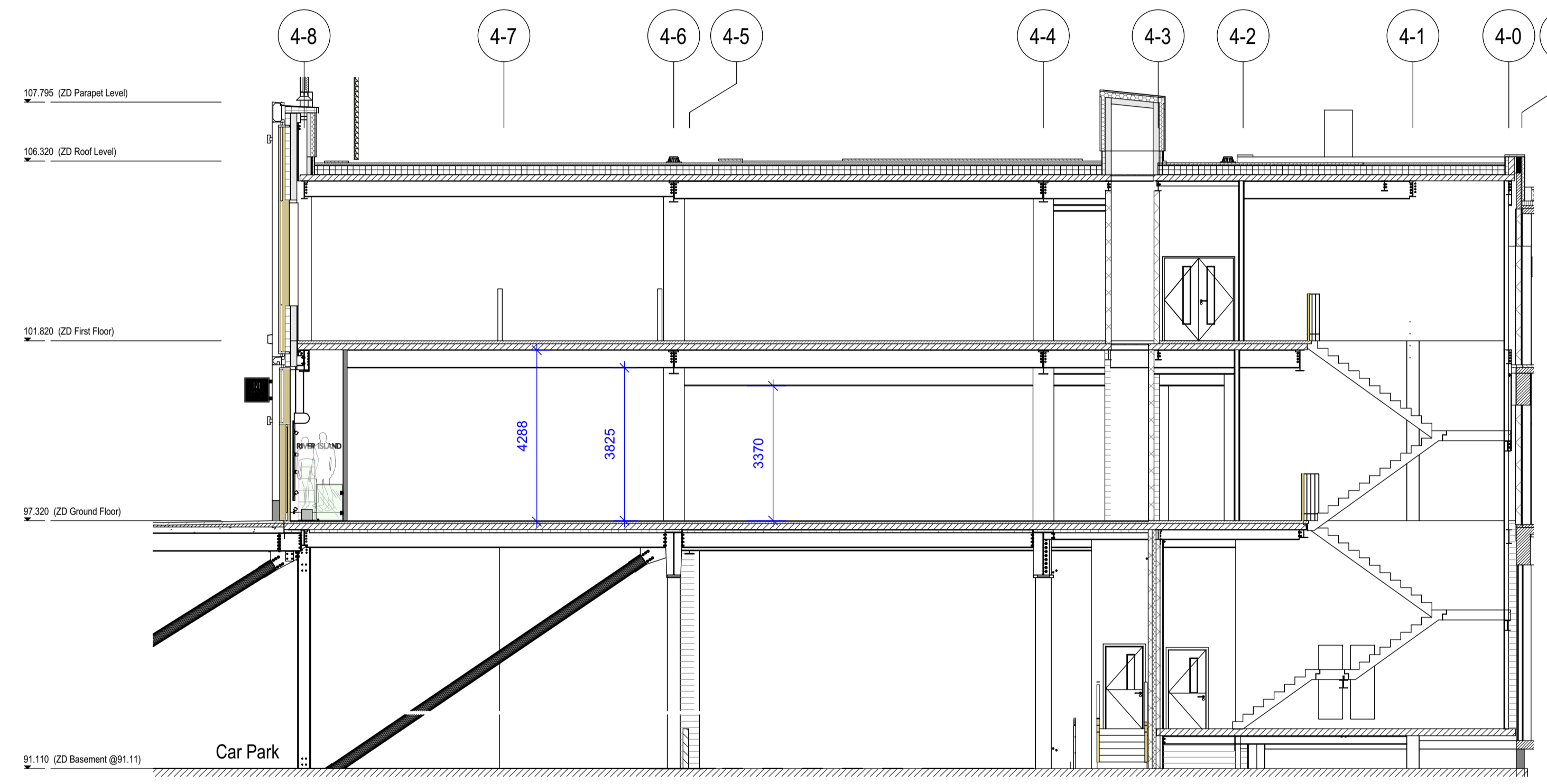
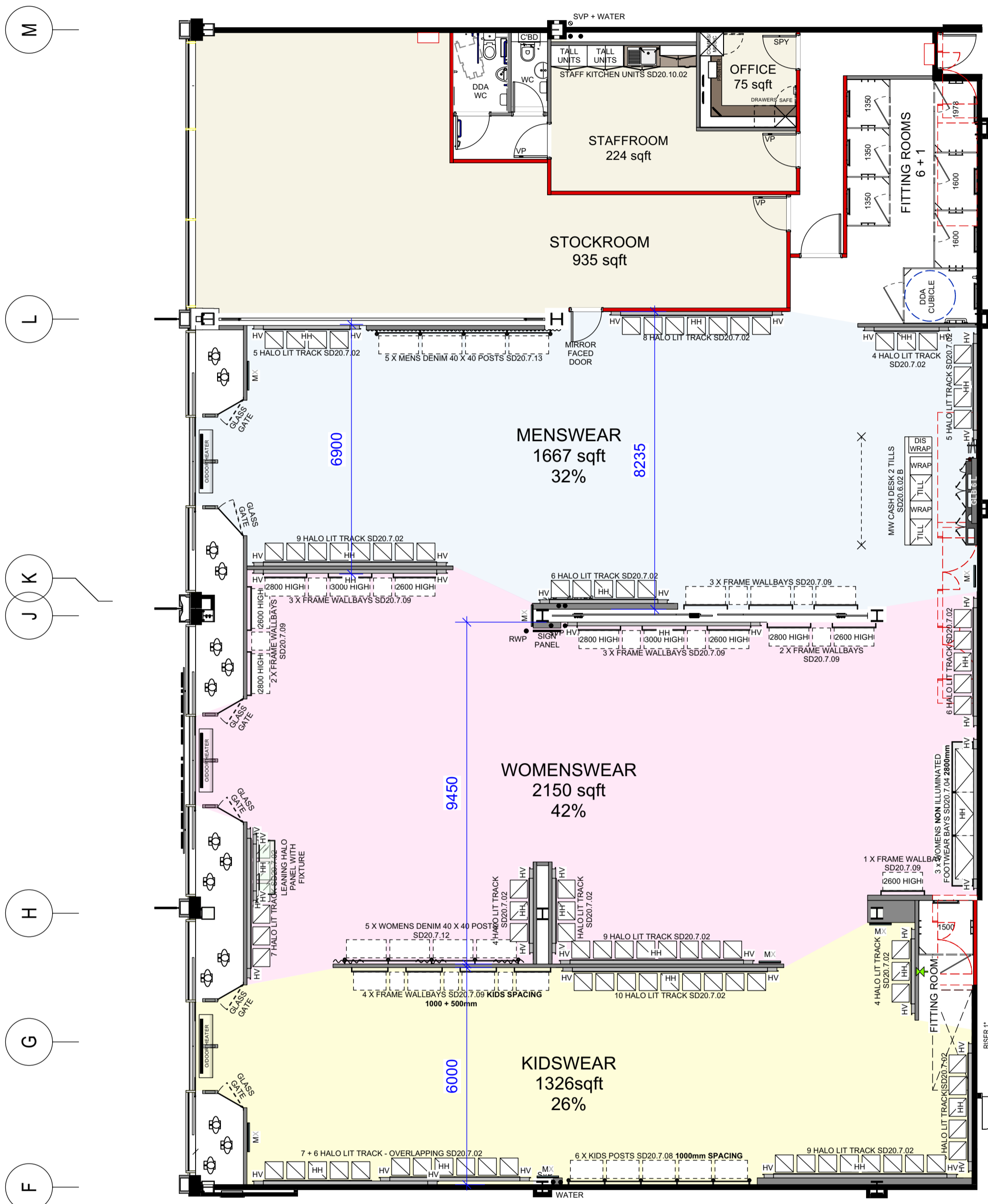
PLUMBING & DRAINAGE
 KITCHEN SINK WASTE PIPE 48MM
 ALL FALLS TO BE COMPLIANT WITH CURRENT BRITISH STANDARDS
 20MM WASTE FROM WASH HAND BASINS RUN INTO 110MM DIA WASTE FROM WC'S TO SVP.
 THE DESIGN LAYOUT OF THE PROPOSED DISABLED WC SHOULD CONFORM TO AT LEAST THE STANDARD RECOMMENDED BY APPROVED DOCUMENT 'M' IN THIS REGARD, PLEASE ENSURE THAT ALL BRANCH PIPEWORK OR OTHER FEATURES DO NOT OBSTRUCT THE LATERAL TRANSFER ZONE.
 ALLOW RODDING ACCESS AT 90 DEGREE BENDS WITH ACCESS TO RODDING CAP, SUITABLE INTUMESCENT FIRE COLLARS & OTHER INTUMESCENT PRODUCTS TO BE USED WHERE SERVICES PENETRATE FIRE SEPARATING ELEMENTS.

OTHER
 ALL DOORS ON ESCAPE ROUTES TO BE FITTED WITH A SIMPLE FASTENING OPENABLE WITHOUT THE USE OF A KEY AND ANY PANIC-TYPE FASTENINGS SHOULD COMPLY WITH BS EN 1125.
 THE CLEAR EFFECTIVE WIDTH OF ALL ESCAPE ROUTES SHOULD NOT BE DIMINISHED BY ADJACENT MERCHANDISE BAYS OR STRUCTURAL ELEMENTS.
 FIRE SAFETY SIGNAGE IS TO BE PROVIDED TO THE UNIT TO COMPLY WITH BS 5499 PART 4 2013.

GLAZING
 ANY GLAZED PROTECTIVE BARRIERS SHOULD HAVE LOAD BEARING CAPABILITIES.
 ALL GLAZING WITHIN CRITICAL LOCATIONS SHOULD BE SAFETY GLAZING.
 GLAZING MANIFESTATION - IN LARGE GLAZED DOORS IN CIRCULATION ROUTES
 TRAVEL DISTANCES - BASIC PRINCIPLES
 18M IN ONE DIRECTION BEFORE REACHING A PLACE OF SAFETY.
 45M IF MORE THAN ONE DIRECTION OF ESCAPE AVAILABLE (ESCAPE OPTIONS TO BE AT LEAST A 45 DEGREE ANGLE TO EACH OTHER).

MIRROR SCHEDULE

DIMS INCL FRAME	FRAME FINISH	LOCATION	SUPPLIER
1			
2			
3			
4			
5			
6			
7			
8			
9			
10			
11			
12			
13			
14			
15			
16			
17			



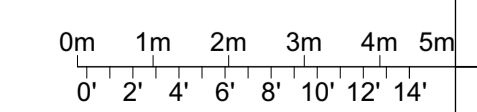
SECTION

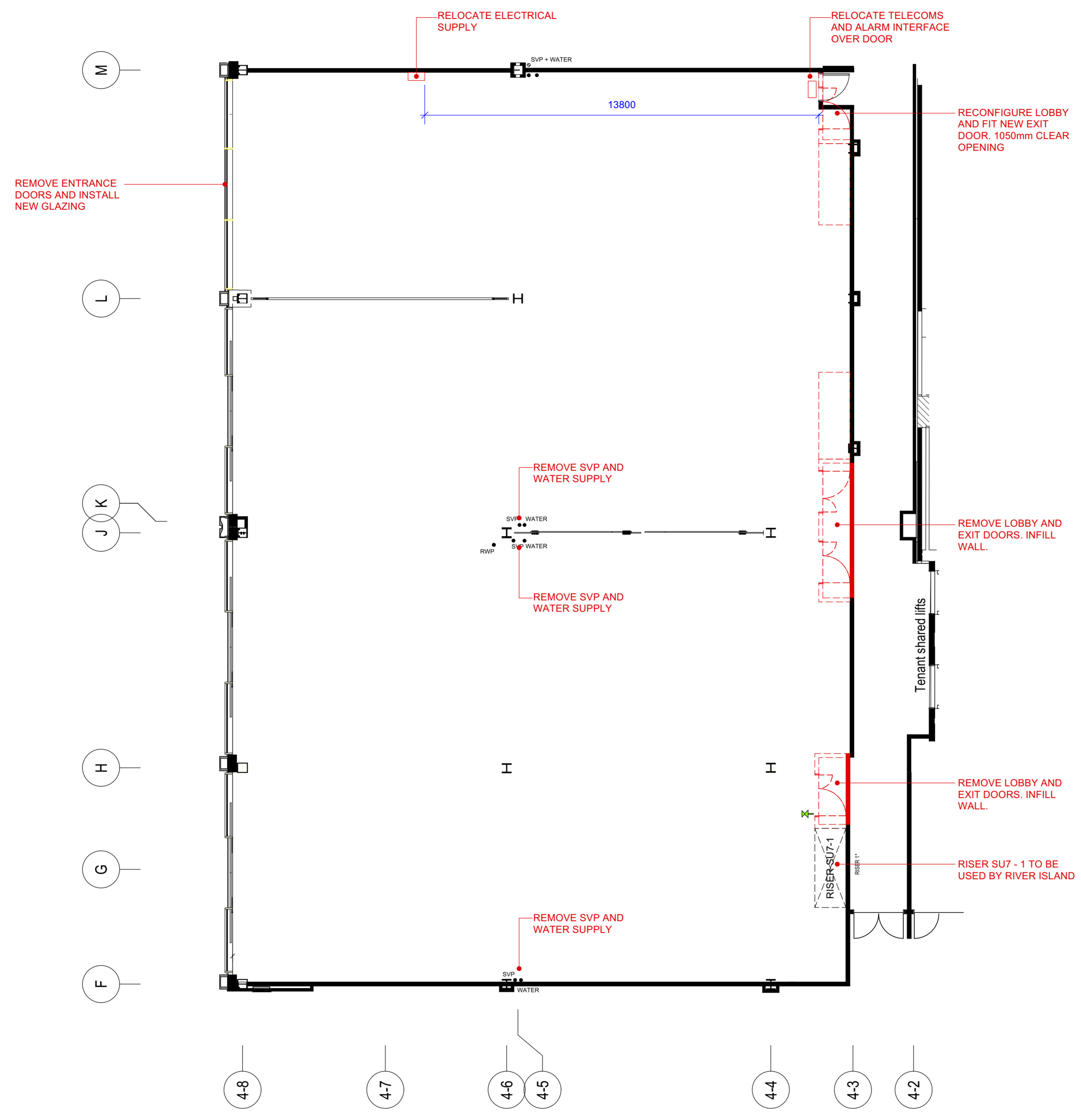
GROUND FLOOR PLAN
 GROSS 7336 SQFT
 NETT SALES 5143 SQFT
 ARM COUNT GUIDE WW 129 MW 117 KW 172

REVISIONS	DESCRIPTION	DATE	INITIAL
D	LEANING HALO PANEL AND FREESTANDING FIXTURE ADDED TO WW	30.07.21	PG
C	REAR ESCAPE DOOR TO BE REMOVED. ESCAPE DOOR ADDED TO STOCKROOM. MID WALLS UP DATED. MERCH UPDATED TO NON WALL RAIL SPEC	29.07.21	PG
B	SECTION ADDED	05.07.21	PG
A	MERCHANDISE ADDED	23.06.21	PG

RIVER ISLAND

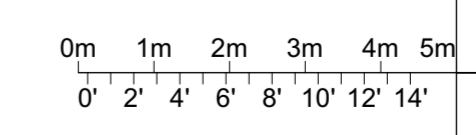
PROJECT	CHEK'D
UNIT SU7 THE GLASSWORKS BARNSELY	DATE 24.05.21
TITLE	SCALE 1:100 @ A1
GROUND FLOOR GA PLAN	DRAWN BY PG
	DRAWING NO. 1600.21.02 D





PLEASE NOTE:
ALL UNUSED SERVICES TO BE REMOVED

PLAN



REVISIONS	DESCRIPTION	DATE	INITIAL
X		XX.XX.XX	XX
X			

B GRADE STORE - NON ILLUMINATED MENS AND WOMENS FOOTWEAR AND BAG BAYS. GENERALLY NO CEILING TO SALES AREAS. VINYL FLOORING

RIVER ISLAND

PROJECT	CHEK'D
UNIT SU7 THE GLASSWORKS BARNSELEY	DATE 05.08.21
	SCALE 1:100 @ A1
TITLE	DRAWN BY PG
LANDLORDS WORKS SETTING OUT PLAN	DRAWING NO. 1600.21.06