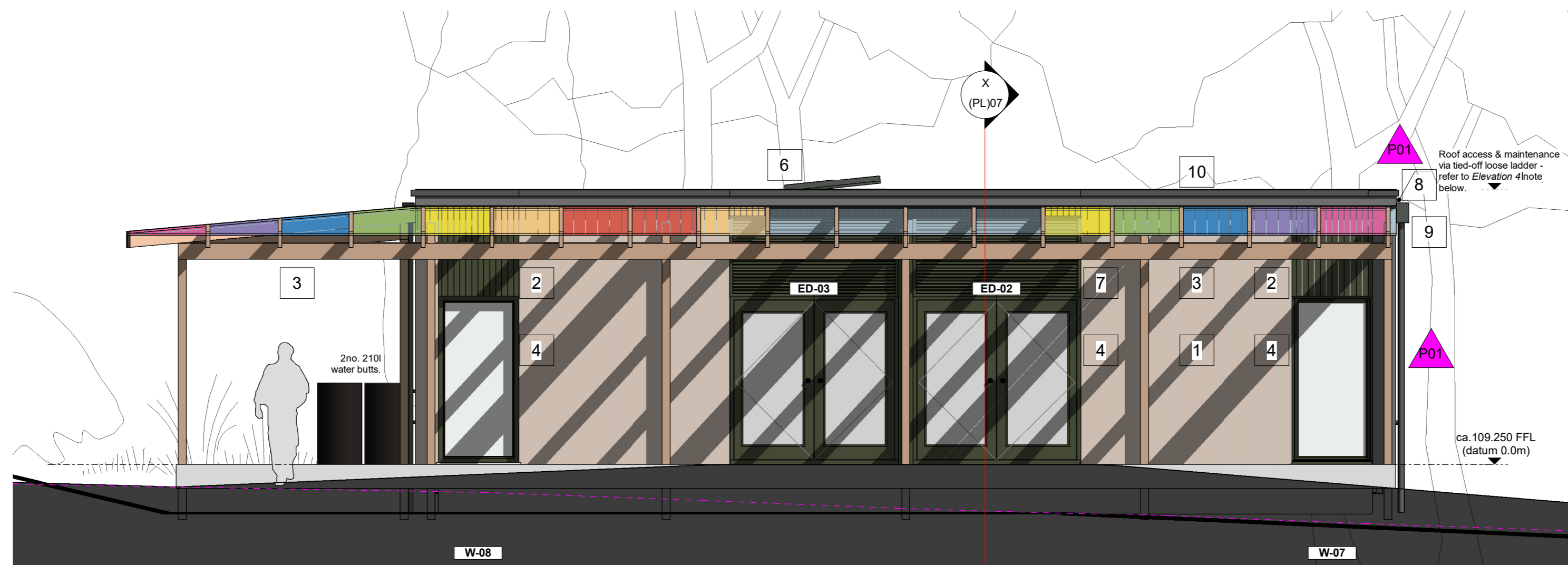


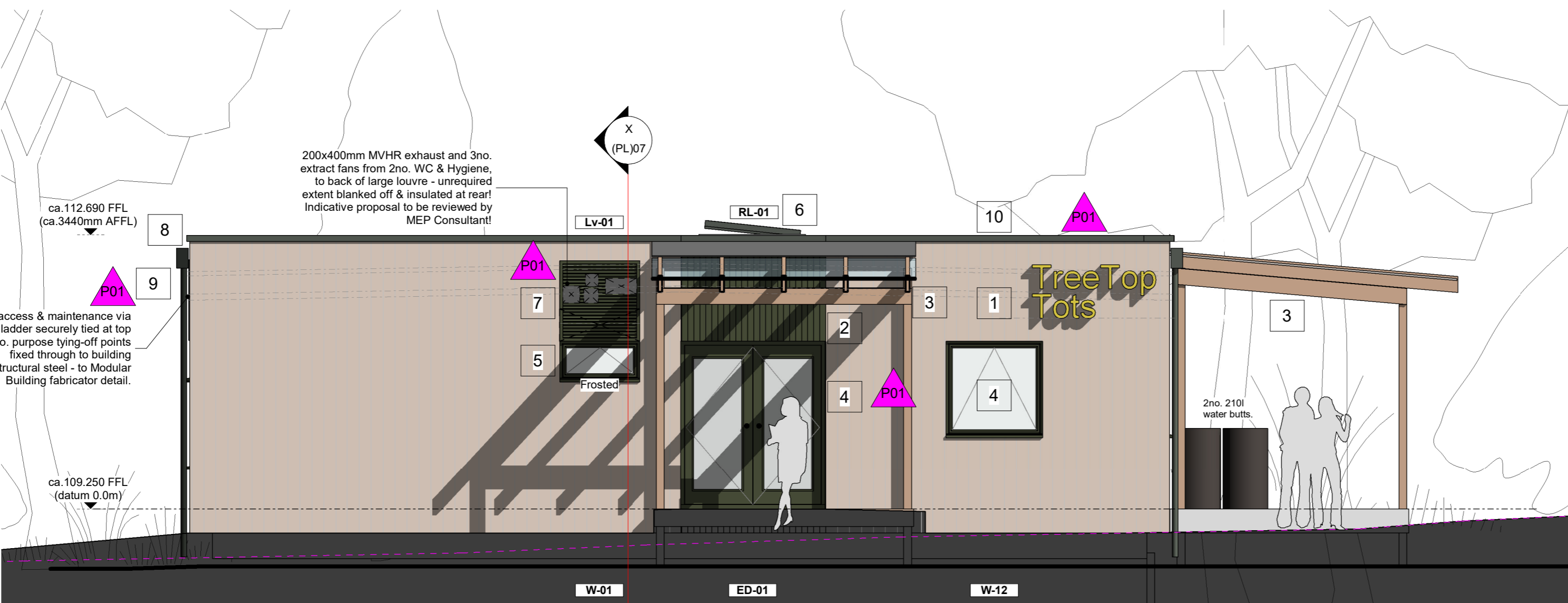
This drawing and CAD data therein is protected by copyright and must not be reproduced without the written consent of DLG Architects LLP. ©

- Do not scale from the drawing, figured dimensions only to be used. All dimensions are in millimetres unless noted otherwise. Scale bar for reference only.
- All dimensions and sizes shall be verified on site before proceeding with the work.
- Drawing to be read in conjunction with all supporting information issued by the Architect, and associated information provided by all other Consultants and Designers.
- Information limited to architectural design and dimensional coordination of the works. Specialist design proposals to be fully coordinated with the architectural design.
- DLG Architects shall be notified in writing of any discrepancies with other Consultant or Designers information. Where discrepancies are apparent, the design intent on the architectural drawings will take precedence, unless otherwise agreed in writing with the Architect.
- All proprietary materials must be installed or constructed in strict accordance with the manufacturer's specification and installation guidance.
- All works to be undertaken in accordance with current Building Regulations and associated BS and BS EN Standards.
- PDF drawings to take precedence over any 2D or 3D CAD data.
- All aspects of the design and specification are limited to the agreed DLG Architects LLP scope. Independent advice relating to all aspects of specialist design to be sought.



Elevation 3
1 : 50

- Elevation Materials Legend.**
All the following are indicative intent, for basic pricing purposes - subject to Specialist Modular Building Fabricators design; all to be agreed prior to material order!
- Timber cladding, generally.**
Ca. 19 x 144 mm Silva Timber Western Red Cedar, pre-finished Sansin SDF Translucent Tone preservative treatment, fixed with SS lost head nails.
 - Timber cladding, feature panels.**
As above (1) but, with factory applied feature RAL 6003 Olive-Green - tbc.
 - Canopies - Main Entrance & Terrace Decking.**
Timber framed independent pergola. *Panpalaon 'Softlite Colourful'*, or equivalent, rainbow range colour & clear triple-wall polycarbonate sheeting - to be agreed with Client! 150mm high code 4 lead flashing up to coping.
 - External Doors & Windows.**
PPC aluminium thermally broken windows with clear/low iron glass. Frame colour matte RAL 6003 Olive-Green - tbc.
Note. MEP Consultant to confirm trickle-vent requirements!
 - Privacy glass.**
Frosted/semi-translucent glass, assumed, PVB film applied to face 4 - tbc.
 - Rooflight.**
PPC aluminium patent rooflight, frame colour matte RAL 6003 Olive-Green - tbc. Openable, for heat purge, to be discussed with Client & MEP Consultant.
 - Louvres.**
PPC aluminium 45° bladed louvres, colour matte RAL 6003 Olive-Green - tbc.
 - Copings.**
PPC aluminium, secret fixed, colour matte RAL 6003 Olive-Green - tbc.
 - Rainwater goods.**
PPC aluminium RWP's & hoppers, colour matte RAL 6003 Olive-Green - tbc.
 - Roof.**
Single-ply membrane to Broof (I4) warm roof system.



Elevation 4
1 : 50

Rev	Date	Description	By	Chk
P01	15.12.25	Building name confirmed by client 7th Oct. Material legend & refs added. Feature cladding colour, window & doors, rainwater goods and copings revised to Olive-green. Lv-01 added over W-01. Ladder tying-off point noted in lieu of cat-ladder. Canopy indicative colour scheme illustrated. WC grey water butt removed.	LM	DB

Project
 WELLSRING ACADEMY TRUST
 THE FOREST ACADEMY
 THORNTON RD, BARNSLBY



Drawing Title
 GA ELEVATIONS 2 of 2

Status
 PLANNING

Job No	Date Drawn	Scale	Drawn	Checked
4547	Oct.25	1:50 @A2	LM	DB

Project ID	Originator	Volume	Level	Type	Role	Number	Revision
4547	-DLG-	ZZ	ZZ	D	A	(PL)06	P01

