

FAO Outer team
additional details for
Burntwood Hall Farm
Brierley
S/2-9H

INDEX CORPORATE MEMBERSHIP
01 APR 2025
<i>Dr</i>
<i>shel</i>

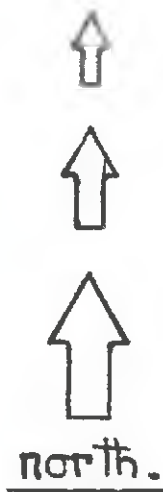


site access shown hatched.

site plan scale 1:1000

Burntwood Hall Farm.

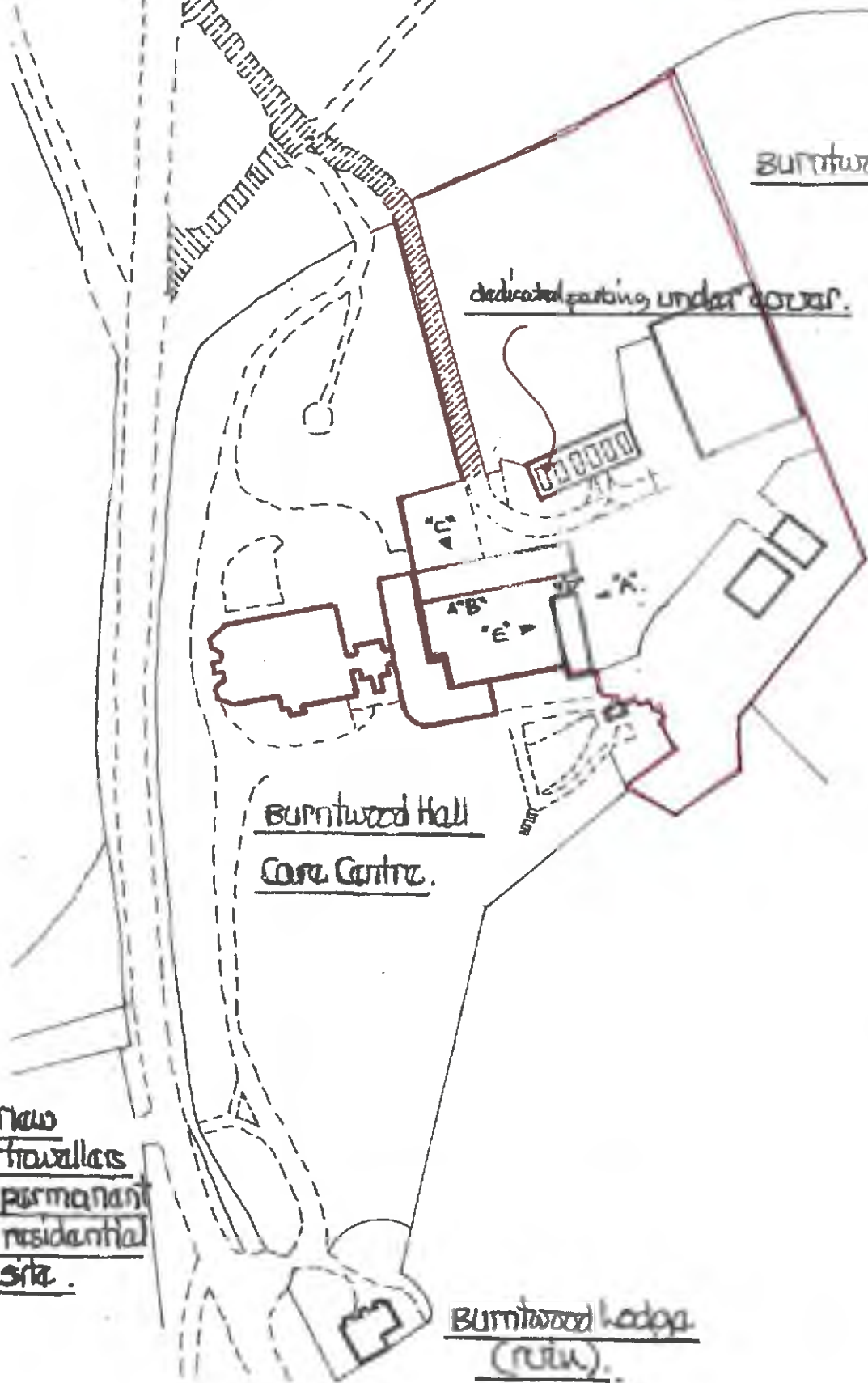
dedicated parking under cover.



Burntwood Hall
Core Centre.

New
travellers
permanent
residential
site.

Burntwood Lodge
(ruin).





wall detail



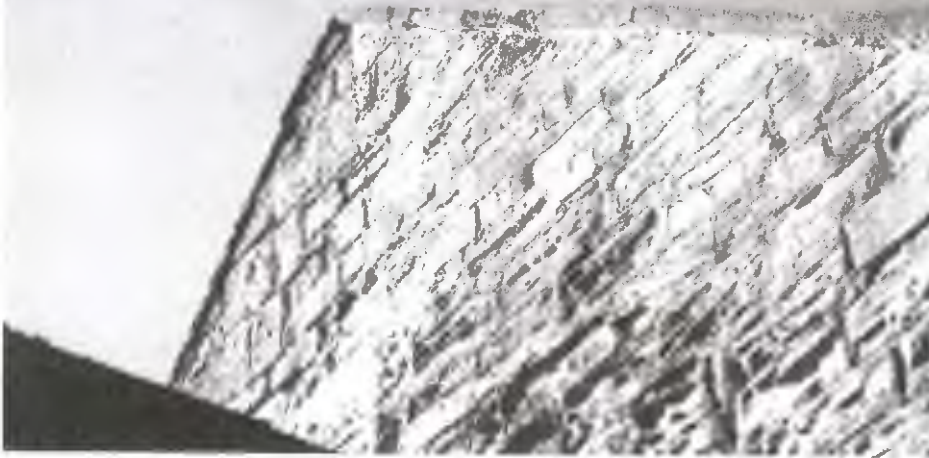
wall detail

wall detail (repointed)

Appendix 1: Photographs of the survey site



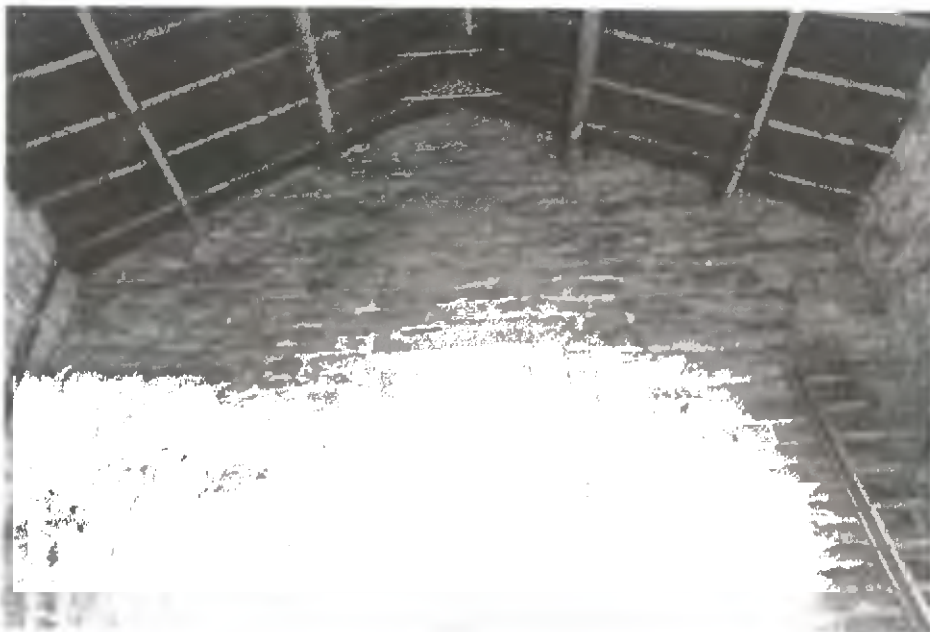
gable wall (barn 1)



east elevation (barn 2)







barn 3 gable wall

* BURUWOOD HALL FARM *

set back to be site assessed

timber head + frame
O/G moulding.

full opening
casement

glazing bar
matching
moulding

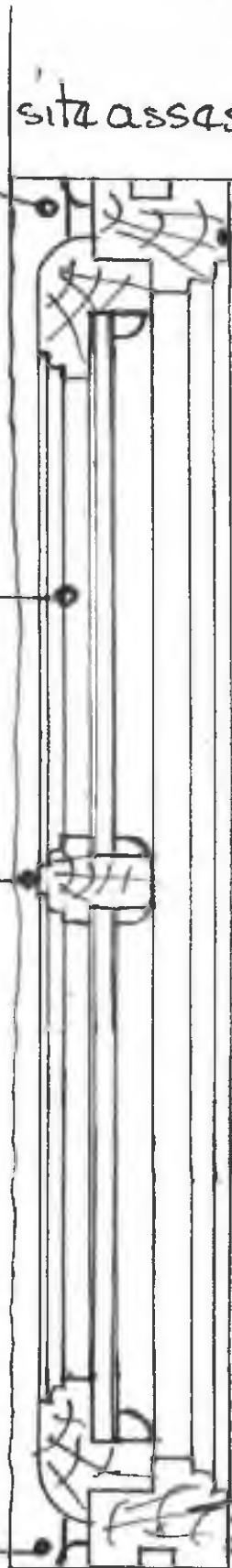
WINDOW DETAILS TO
HABITABLE ROOMS.

(first floor bedrooms
for means of escape in
case of fire.)

mastic pointing
colour to
match frame finish

cill to match.

window board finish
to clients choice.



set back as required to suit.

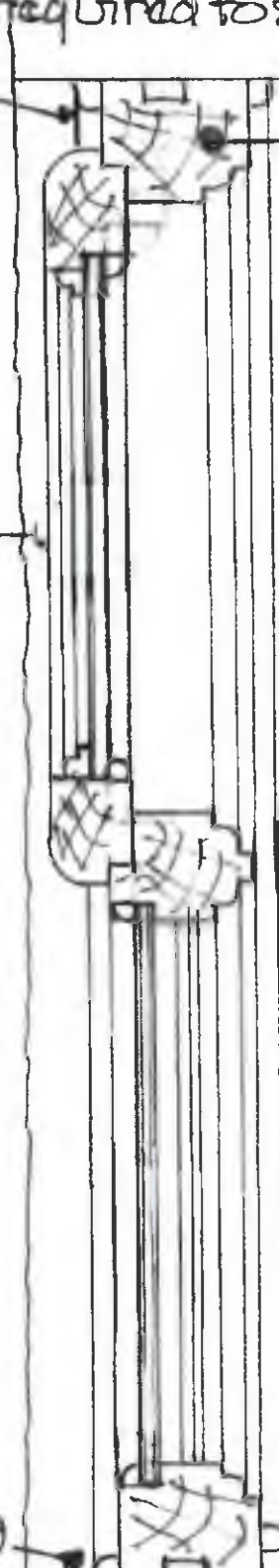
timber head + frame
O/G moulding.

opening top
casement

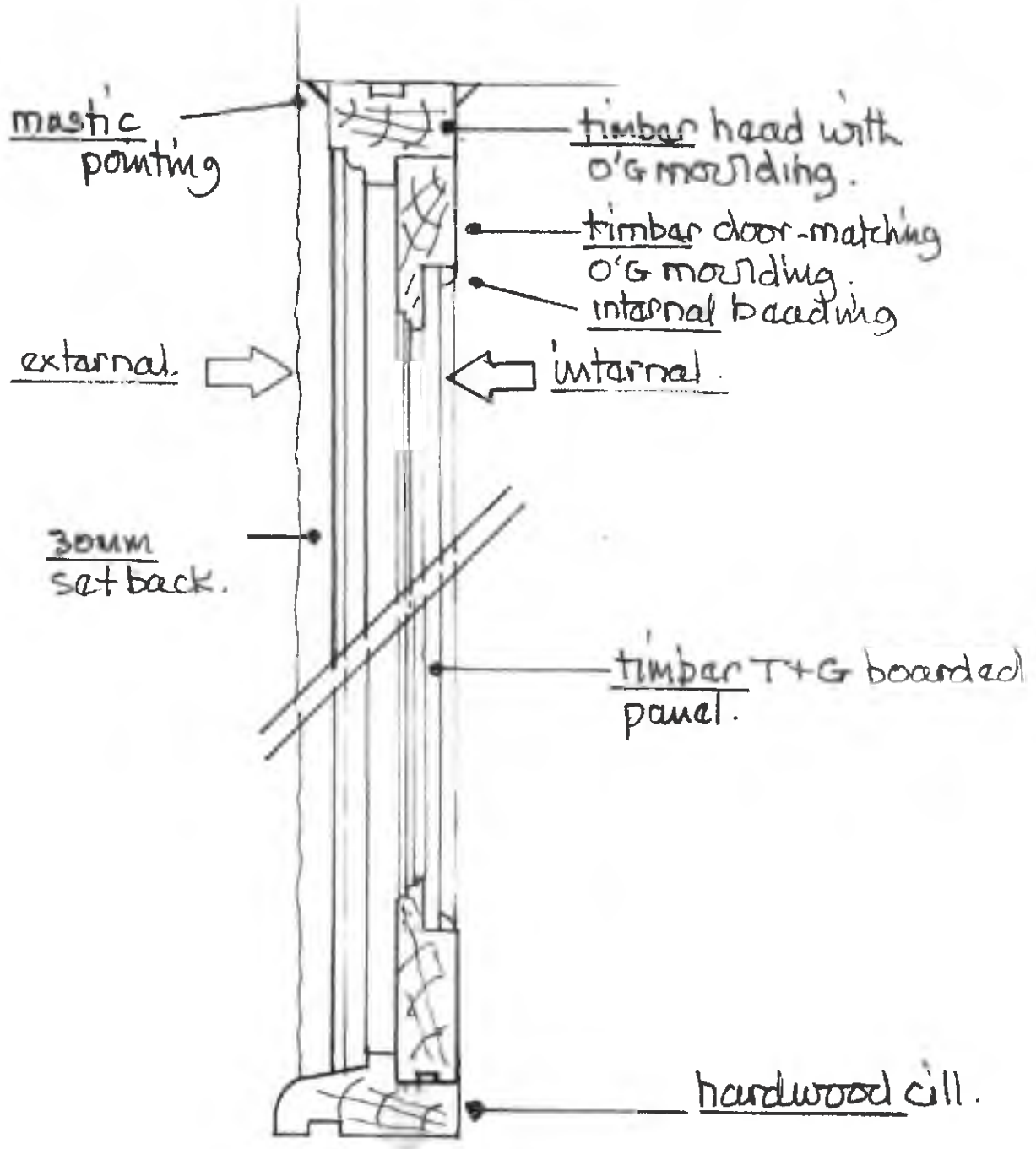
WINDOW DETAILS TO
NON HABITABLE ROOMS.
(kitchens/bathrooms/
shower rooms/GF
rooms)

mastic pointing
colour to
match frame finish

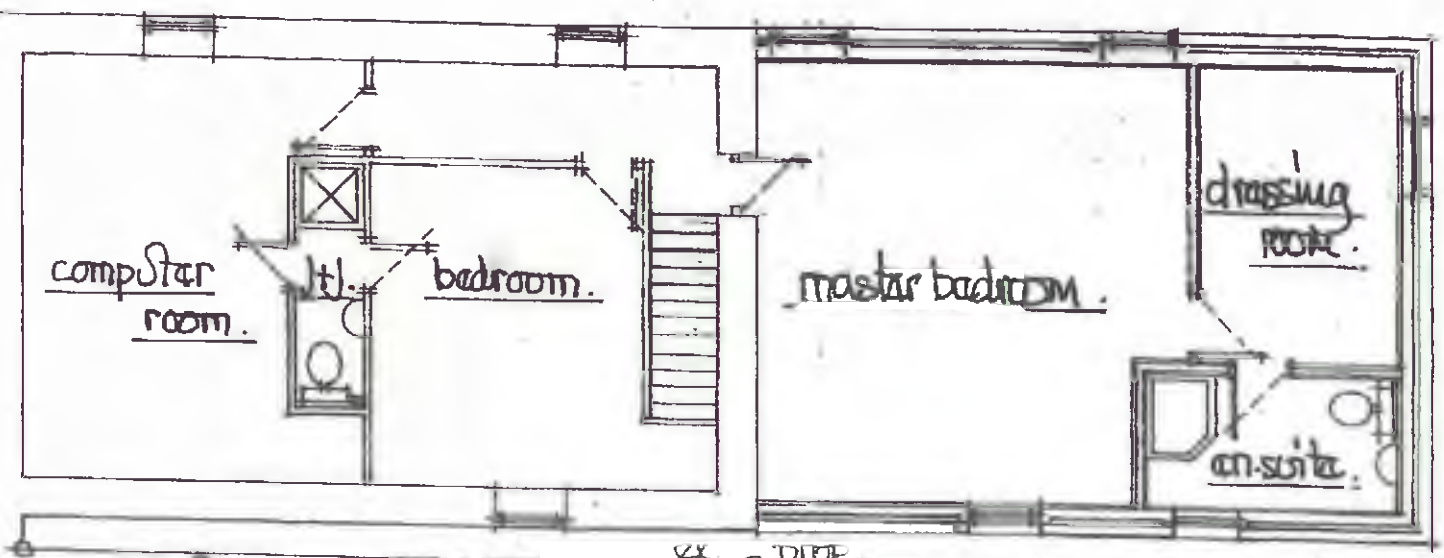
window bd finish to
clients speci



* BURSTWOOD HALL FARM *



DOOR + FRAME DETAILS.

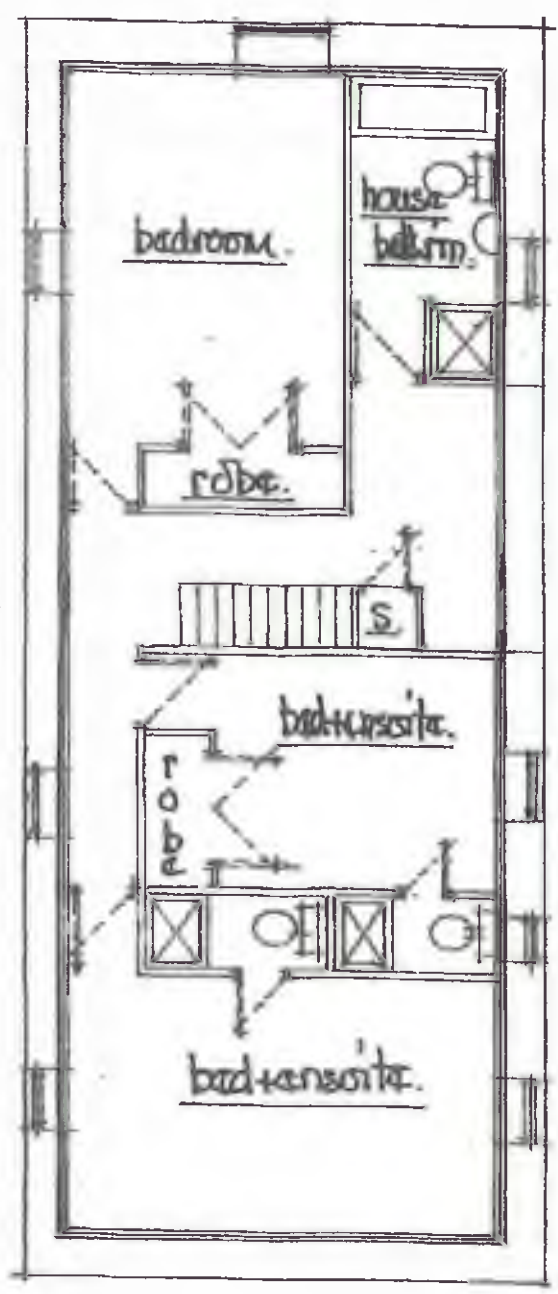
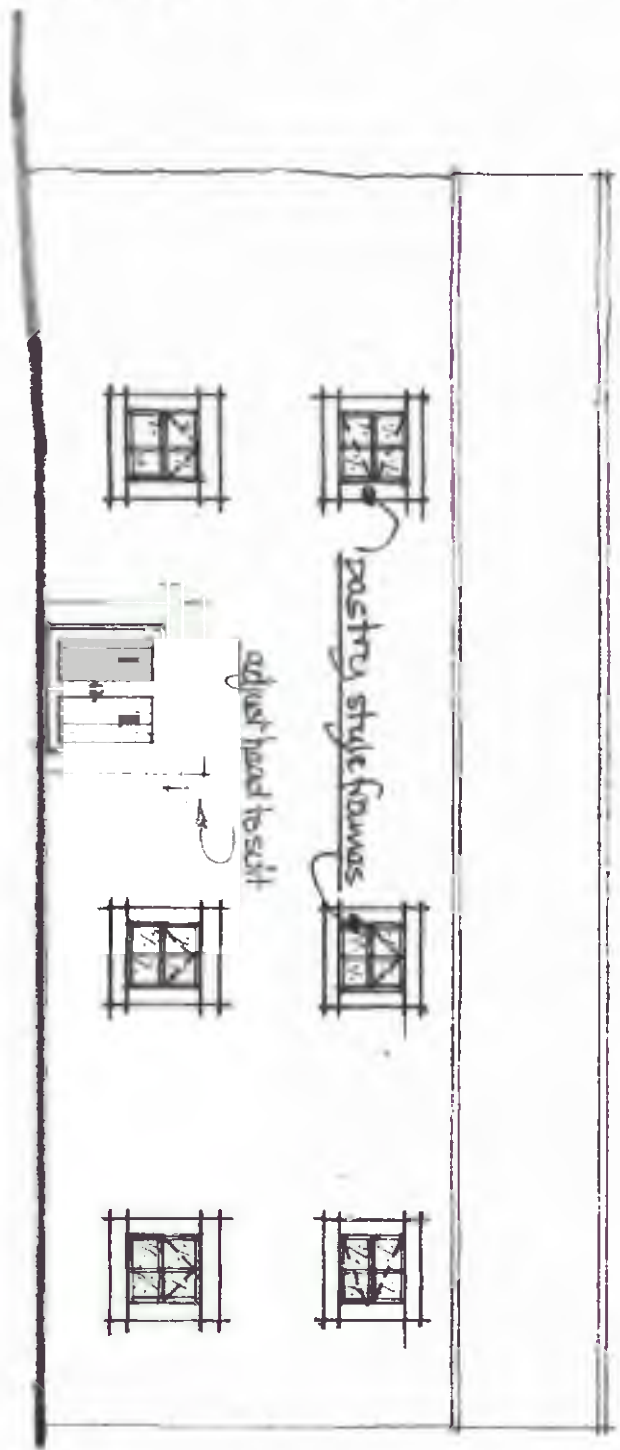


upper floor block "B".

EX. PROP.

scale: 1:100M.

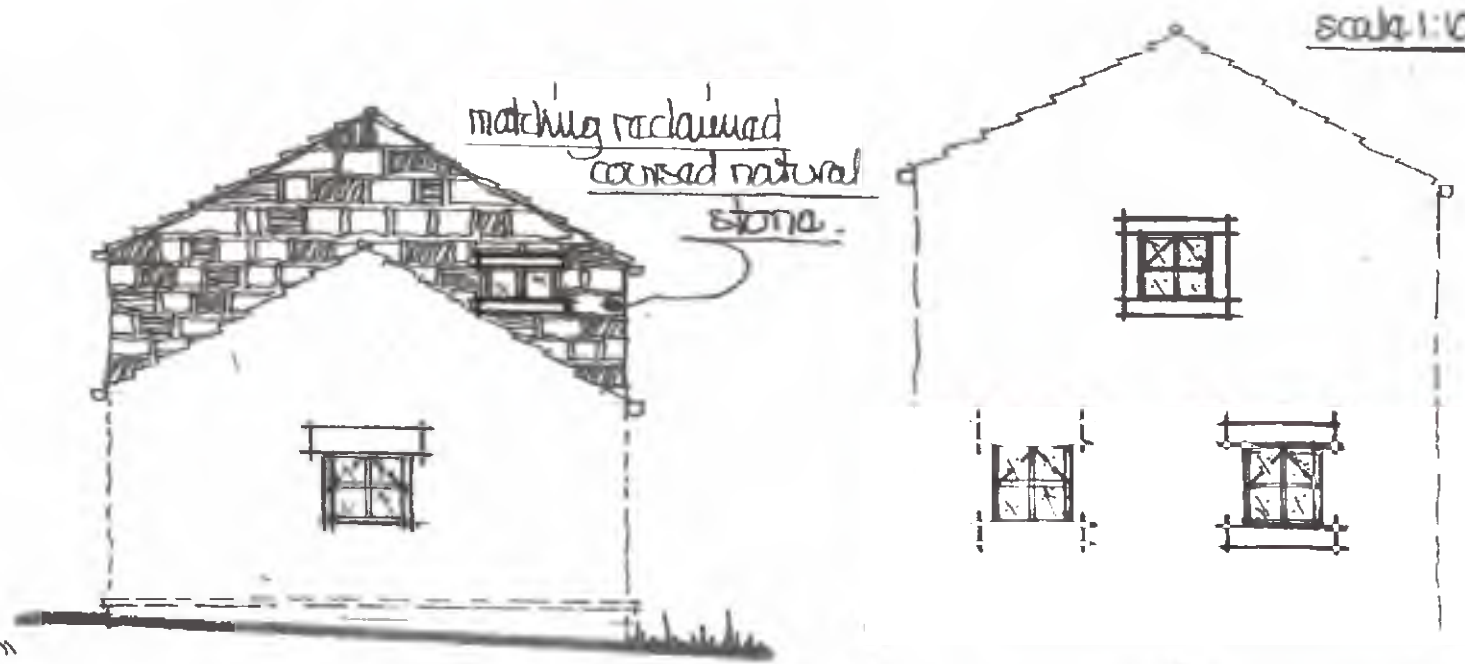
upper floor block "A"





pastry style frames thro'out

VIEW ON "A"



matching reclaimed
coarsed natural
stone.

VIEW ON "D"



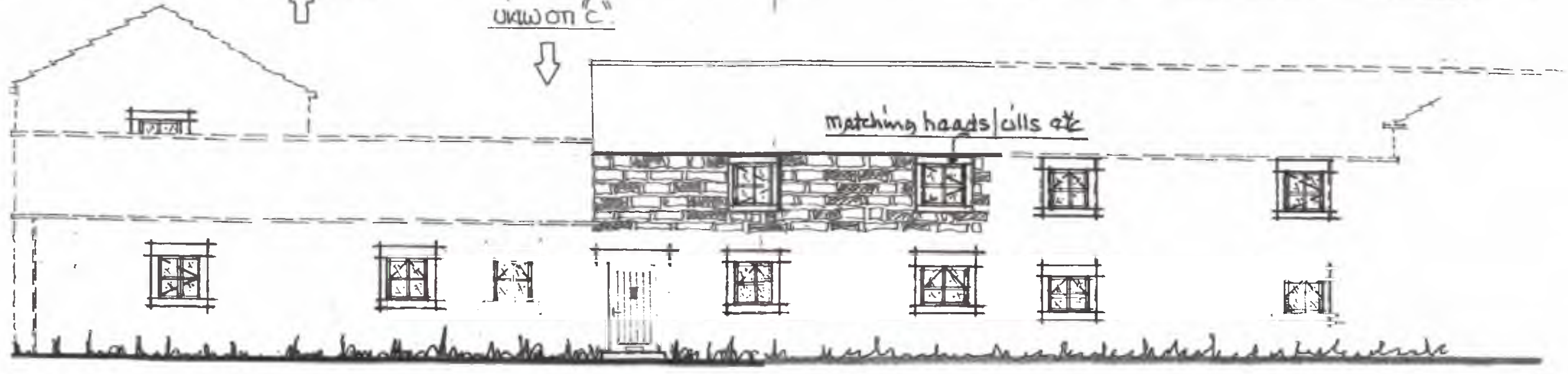
matching roof coverings

matching reclaimed stone

VIEW ON "B"



VIEW ON "C"



matching heads/cills etc

