

Planning Sheet Notes:

Type and style of roof tiles and facing materials including external features such as canopies, cills, heads, fascia, windows and doors as site specification and to Local Authority Approval. SHOWN INDICATIVE ONLY ON THIS PLAN



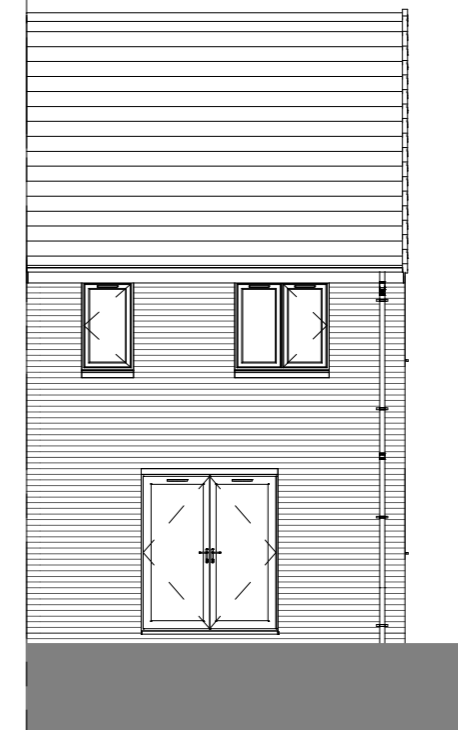
Front Elevation.

1 : 100



Left Elevation.

1 : 100



Rear Elevation.

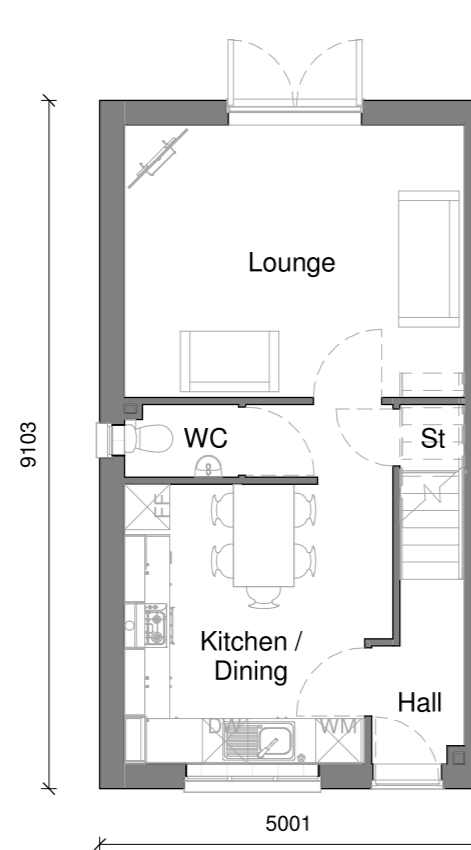
1 : 100

Area Schedule - Sales

Name	Area	Area Sq Ft
Ground Floor GIA	38.00 m ²	409.06 SF
First Floor GIA	38.00 m ²	409.06 SF
	76.01 m ²	818.13 SF

Area Schedule - Build

Name	Area	Area Sq Ft
Ground Floor Build	38.65 m ²	416.06 SF
First Floor Build	38.65 m ²	416.06 SF
	77.31 m ²	832.11 SF



Ground Floor.

1 : 100



First Floor.

1 : 100



House Type Range		Sub Range	
2018 Range		OMS	
Scale at A3	Date	Drawn	Checked
As indicated	21/12/2016	JF	NTL
Pack Title			
The Danbury Working Drawing Pack			
Sheet Name			
Planning Drawings			
Coins Code	House Type Code	Plotting	Handing
	DANBUR	END	AS
Style	Issue		
BB01			
Project Drawing Pack No.	Project	Pack No.	Rev Sheet
18CORE		1080	1 201

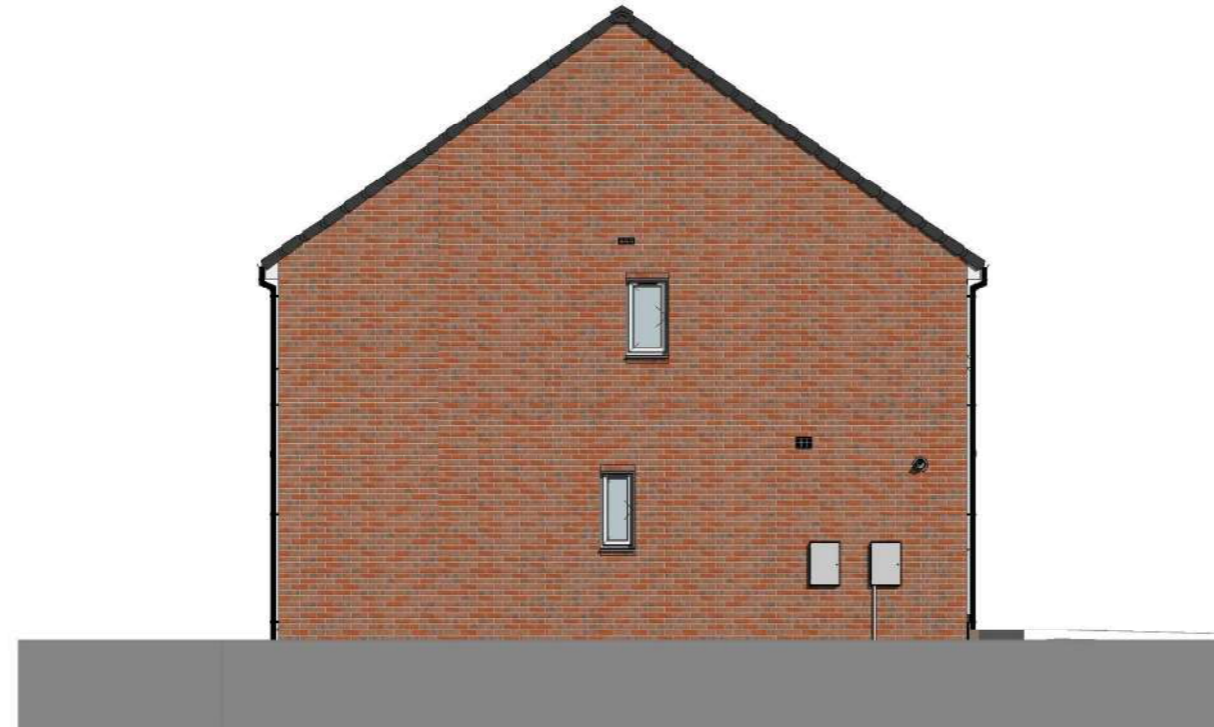
For internal use only
818.16 ft² / 76.01 m²

Danbury

3 Bed 5 Person



C=72 R=106
M=100 G=42
Y=7 B=133
K=2



House Type Description.

Whether you're a growing family or just want space to grow into, the modern Danbury home is perfect for you.

From the airy hallway, the open plan kitchen/diner welcomes you into your home and is the perfect place to catch up with family and friends. When it's time to sit back and relax, you'll love the homely lounge. The large French doors overlook the rear garden and when the weather's good you can open these up to transform your downstairs space. A handy WC and storage complete this floor.

Upstairs, you'll find three bedrooms. The master bedroom has an en suite, plus there's a family bathroom, making the morning bathroom rush hour a thing of the past.

Key Features.

- Three-bedroom semi-detached home
- 818 sq. ft. of living space
- En suite to master bedroom
- Modern, open plan kitchen/diner
- Lounge with French doors onto rear garden
- Downstairs WC
- Built-in storage on both floors
- Make your home your own with **Keepmoat Options**
- Move in with just a 5% deposit with **Help to Buy**
- Got a home to sell? With **EasyMove** we can help