



FRONT ELEVATION
TYPE B - END

TYPE B - MID

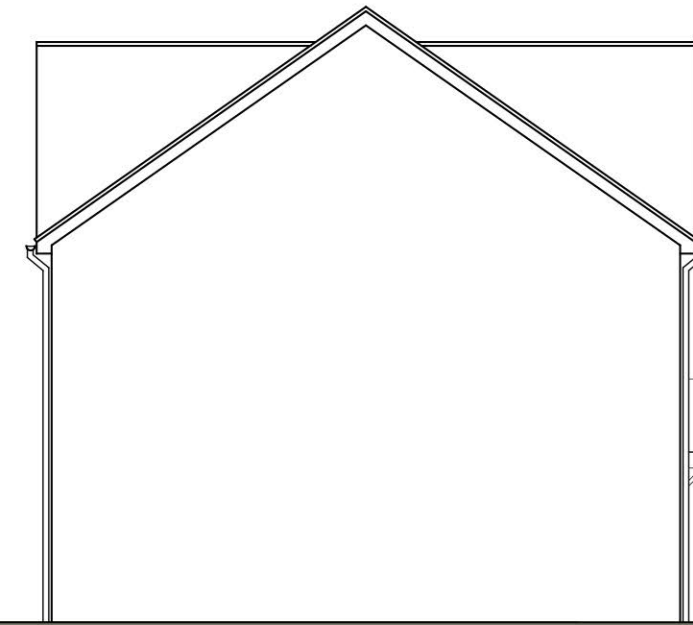
TYPE B - ALTERNATE END



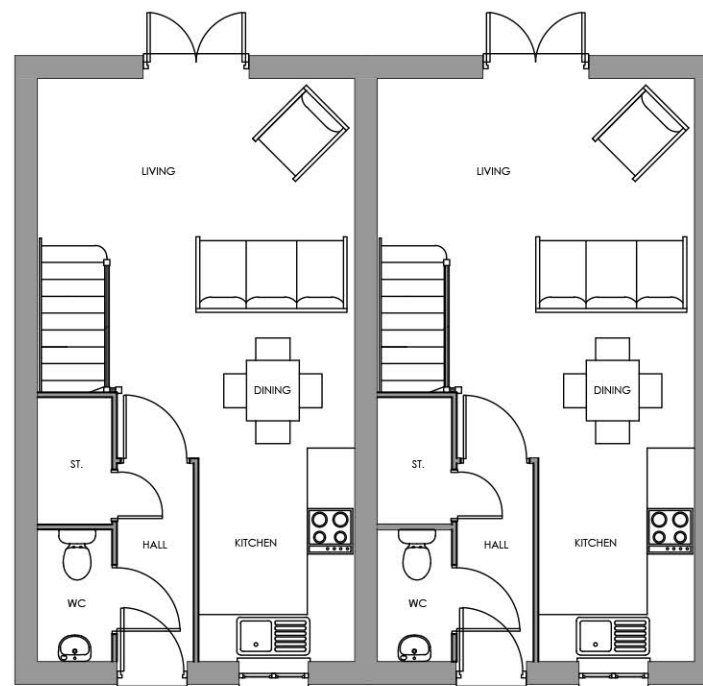
REAR ELEVATION
TYPE B - ALTERNATE END

TYPE B - MID

TYPE B - END

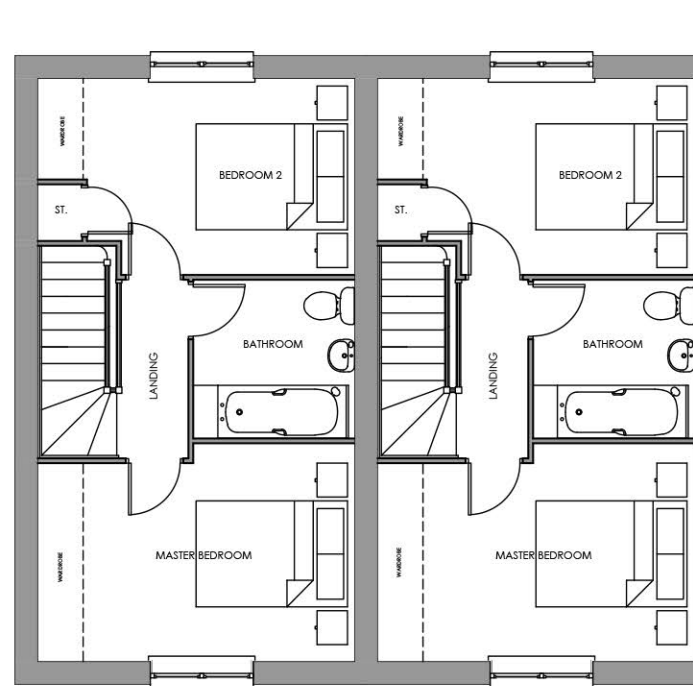


SIDE ELEVATION



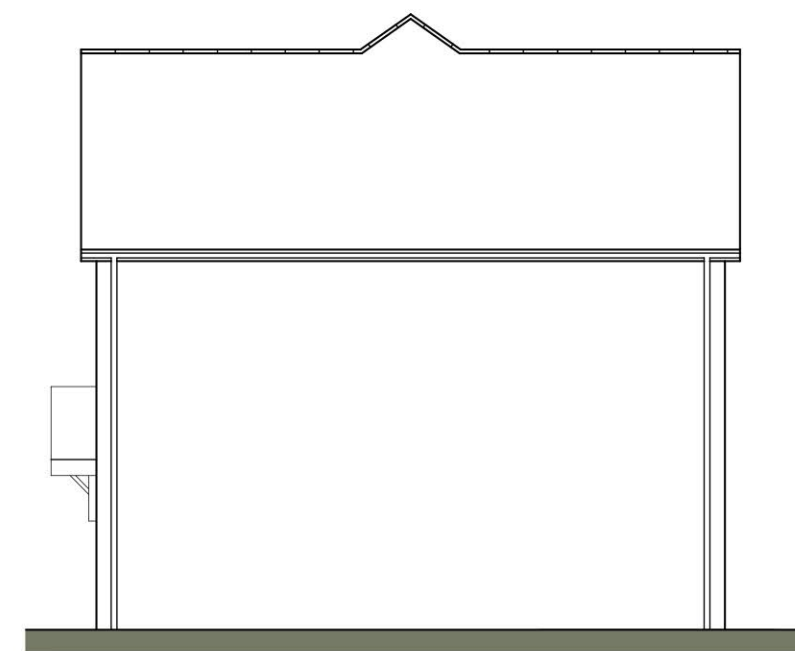
GROUND FLOOR PLAN
TYPE B - END

TYPE B - MID



FIRST FLOOR PLAN
TYPE B - END

TYPE B - MID



SIDE ELEVATION

Scaled @ 1:100



REV.	DESCRIPTION	BY:	DATE:
A	Minor internal amendments to clients comments	TW	21.03.19

STEN
ARCHITECTURE

Suite 4, Unit 1,
Benton Office Park,
Bennett Avenue,
Horbury,
Wakefield,
WF4 5RA
Tel: 01924 669424

Web: www.sten-architecture.co.uk
Twitter: @STEN_arch
Facebook: [stenarchitectureitd](https://www.facebook.com/stenarchitectureitd)
LinkedIn: [Sten Architecture](https://www.linkedin.com/company/sten-architecture)

CLIENT: Premier Construction Nothern
51 Rimington Road, Wombwell
Barnsley
S73 8DQ



TITLE: Planning Drawings
Type B Affordable

SITE: Gypsy Lane
Wombwell

SCALE AT A3:	DATE:	DRAWN:	CHECKED:
1:100	25.02.19	TW	
PROJECT NO:	DRAWING NO:	REVISION:	
1876	1876.TB.02	A	