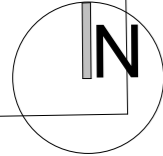


# Proposed Site Plan

1 : 250



- Hedgrow**  
Native hedgerow mix:-  
Hornbeam *Carpinus betulus*  
Hawthorn *Crataegus monogyna*  
Hazel *Corylus avellana*  
Spindle *Euonymus europaeus*

- Planting area 1 - Grasses**  
*Imperata cylindrica* 'Rubra'  
blood grass (syn. Red Baron)  
*Stipa tenuissima*  
pony tails or angel hair (syn. *Stipa tenuifolia*)  
*Calamagrostis x acutiflora* 'Karl Foerster'  
feather reed grass

- Planting area 2**  
Dogwood (*Cornus sanguinea*)  
Ferns  
*Asplenium scolopendrium*  
hart's tongue fern or horse tongue  
*Polypodium vulgare*  
common polypody



**Tree T1**  
Birch tree

**Trees T2 and T3**  
Weeping birch *Betula pendula* Youngii

**Tree T4**  
Cherry tree (*Prunus*, Pink Shell)

**Meadow grass and wildflower mix:-**  
Grassed areas including Meadow Grass, Cocksfoot and Yorkshire Fog  
Wildflowers-  
*Birdsfoot Trefoil*, Corn Cockle, Ribwort Plantain, red flowering clover, Vetch, Poppy, Yarrow, cornflower, black knapweed, wild carrot, hedge bedstraw, corn marigold and chamomile



**Sedum Roof including British sedums**  
*Sedum Album* – White stonecrop, Biting Stonecrop – golden moss,  
*Sedum Anglicum* – English Stonecrop,  
*Sedum Fosterianum*

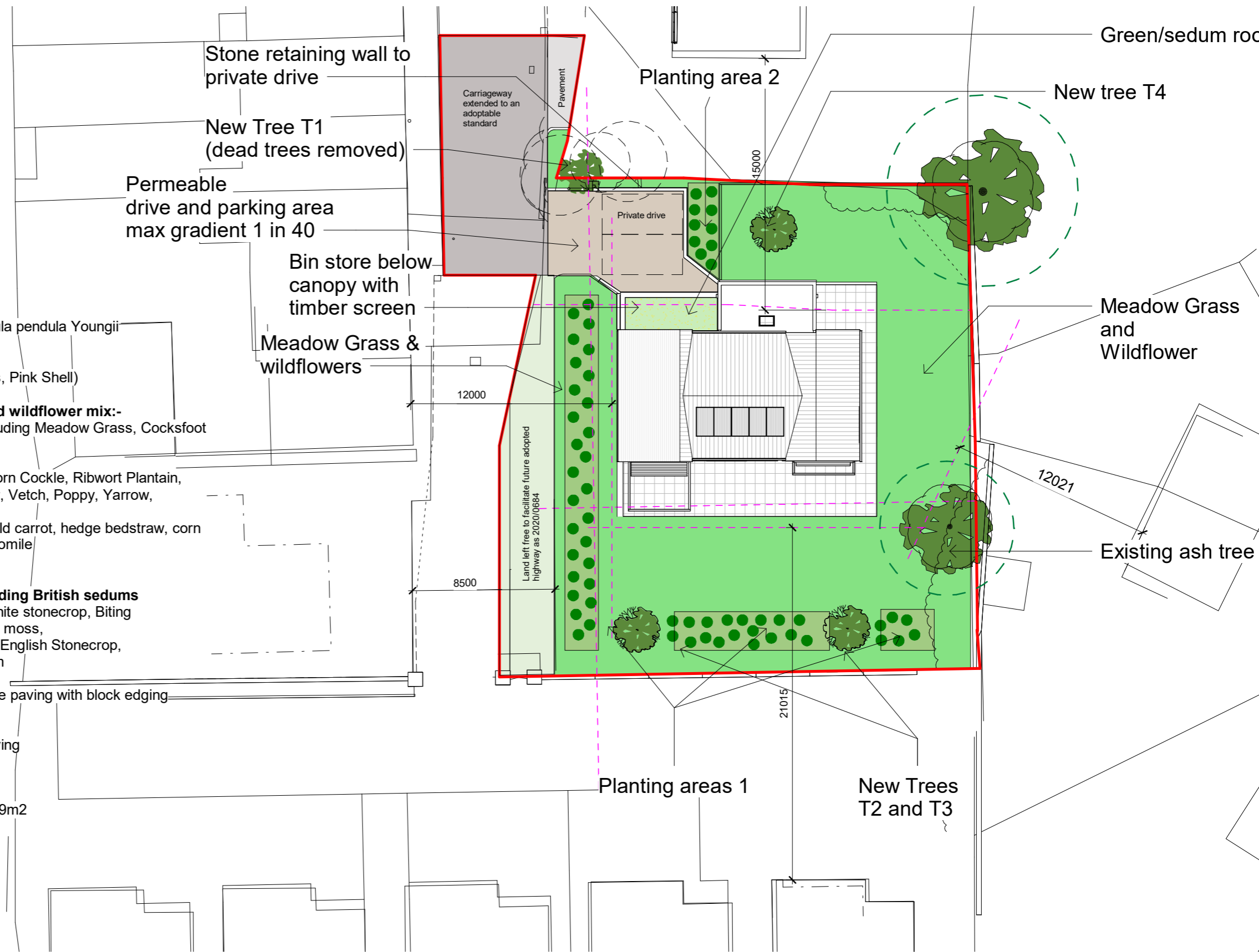


Driveway permeable paving with block edging



Terrace - stone paving

Site boundary - planning. Site area = 949m<sup>2</sup>



**NOTES**  
The contractor is responsible for checking dimensions, tolerances and references. Verify any discrepancies with the architect before proceeding with the work. Where an item is covered by drawings of different scales the larger scale drawing is to be worked to. Construct to figured dimensions only.

Date	Rev	Revision / author/ checker
6.02.24	A	SD boundary wall noted, key added
8.05.24	B	SD Landscape plan updated for revised access and parking Trees updated, ash tree retained, boundary trees to parking removed.
03.06.24	C	Red line changed following comments by Highways and Asset Management Team. Extent of carrageway to be adopted extended. Land left to facilitate future adopted highway shown. JNBP/SD

**Purpose of Issue** Planning  
**Project** Tower Street, Barnsley  
**Drawing** Proposed Landscape Plan

**Drwg. no** 23-122-111 **Rev** C  
**Drawn** JNBP **Checked** SD  
**Scale** 1 : 250 @A3 **Date** 12/04/23