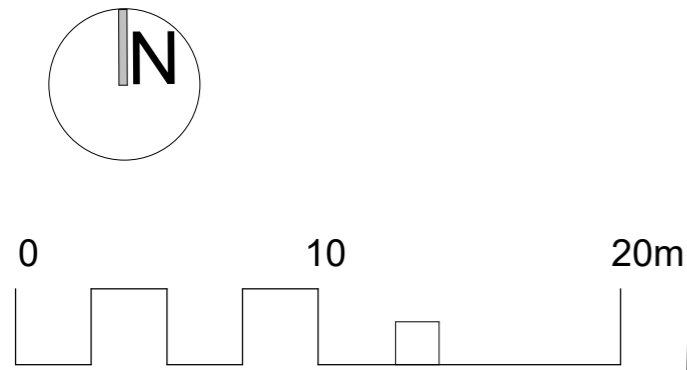
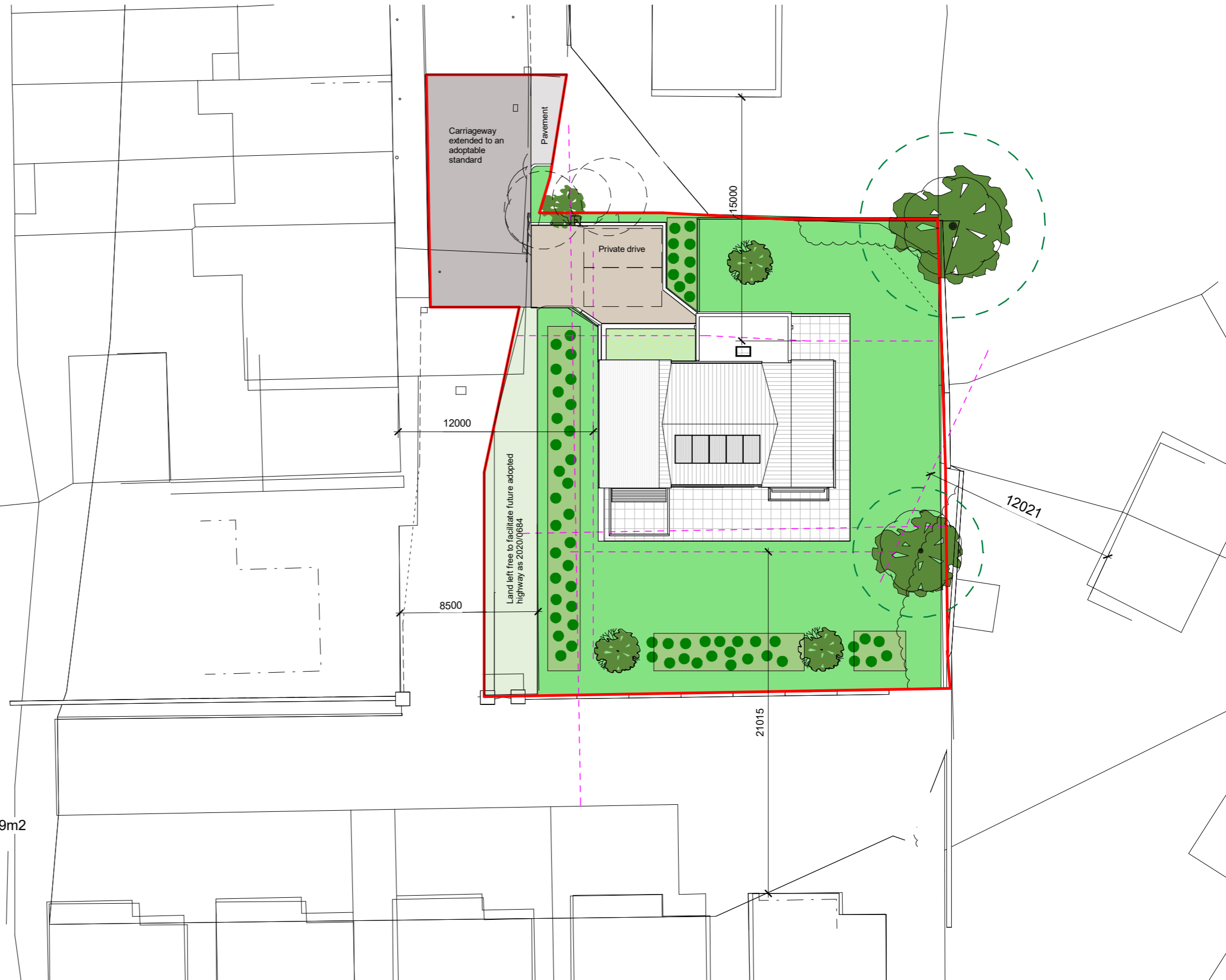


# Proposed Site Plan

1 : 250



- Site boundary - planning. Site area = 949m<sup>2</sup>
- - - Overlooking distance constraints
- - - Tree Root Protection Area



**NOTES**  
 The contractor is responsible for checking dimensions, tolerances and references. Verify any discrepancies with the architect before proceeding with the work. Where an item is covered by drawings of different scales the larger scale drawing is to be worked to. Construct to figured dimensions only.

Date	Rev	Revision / author/ checker
20.12.23	A	Option 2 developed following client comments. JNBP/SD
26.01.24	B	Red line revised SD
06.02.24	C	Issued for planning. JNBP/ SD
07.05.24	D	Building lowered, lower ground floor added and driveway changed. JNBP/ SD
03.06.24	E	Red line changed following comments by Highways and Asset Management Team. Extent of carriageway to be adopted extended. Land left to facilitate future adopted highway shown. JNBP/SD

<b>Purpose of Issue</b>	Planning
<b>Project</b>	Tower Street, Barnsley
<b>Drawing</b>	Proposed Site Plan

<b>Drwg. no</b>	23-122-110	<b>Rev</b>	E
<b>Drawn</b>	JNBP	<b>Checked</b>	SD
<b>Scale</b>	1 : 250 @A3	<b>Date</b>	12/04/23