

**New Maythorne Farm Wind Turbine**

Cumulative Landscape and Visual Impact Assessment

Figures and Visualisations

August 2015

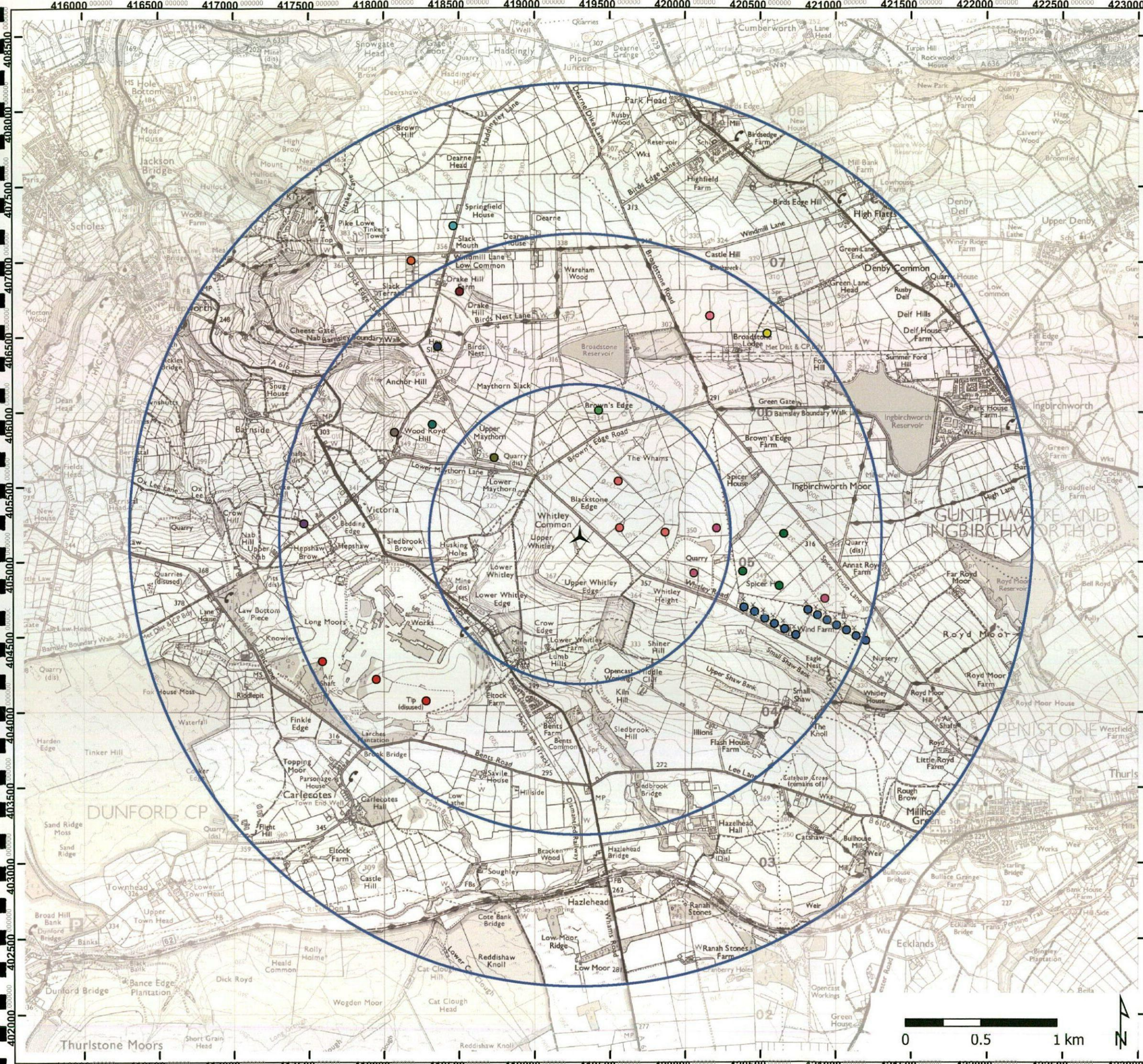
<sup>A</sup> 17 Minster Precincts  
Peterborough PE1 1XX  
United Kingdom

<sup>T</sup> +44 (0) 1733 310 471

<sup>F</sup> +44 (0) 1733 553 661

<sup>W</sup> [www.lda-design.co.uk](http://www.lda-design.co.uk)

LDA Design Consulting Ltd  
Registered No: 09312403  
17 Minster Precincts, Peterborough PE1 1XX



**Legend**

-  Turbine Location
-  Distance from Turbine (1, 2, 3km)
-  Blackstone Edge
-  Broadstone Lodge Farm
-  Broadstone Reservoir
-  Dearne Head Farm
-  Drake Hill Farm
-  East of Broadstone Road
-  Hazelhead
-  Hey Slack Farm
-  Heyside Farm
-  Matrins Nest Farm
-  Royd Moor
-  Spicer Hill Extension
-  Spicer Hill
-  Upper Maythorne Lane
-  Upper Woodroyd Barn
-  Walkers Barn

**PROJECT TITLE**  
**New Maythorne Farm**

**DRAWING TITLE**  
**CLVIA1: Cumulative Schemes**

Figure no. CLVIA1  
 Date: 19/08/2015  
 Produced by: TR  
 Scale@A3: 1:25,000



No dimensions are to be scaled from this drawing.  
 All dimensions are to be checked on site.  
 Area measurements for indicative purposes only.




Sources: Ordnance Survey



X:\JOBS\4722\_MAYTHORNE\_FARM\GIS\PROJECTS\4722\_CLVIA2.MXD



**LEGEND**

-  Turbine
-  Distance from turbine (1, 2 and 5km)
-  Viewpoint locations

# LDĀ DESIGN

PROJECT TITLE  
**NEW MAYTHORNE FARM TURBINE**

DRAWING TITLE  
**Figure CLVIA2:  
Representative Viewpoint Locations**

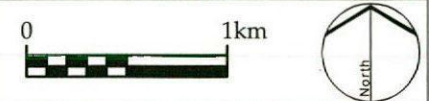
ISSUED BY	Peterborough	T: 01733 310 471
DATE	Aug 2015	DRAWN NA
SCALE @A3	1:38,000	CHECKED RK
STATUS	Final	APPROVED RK

**DWG. NO. 4722\_CLVIA2**

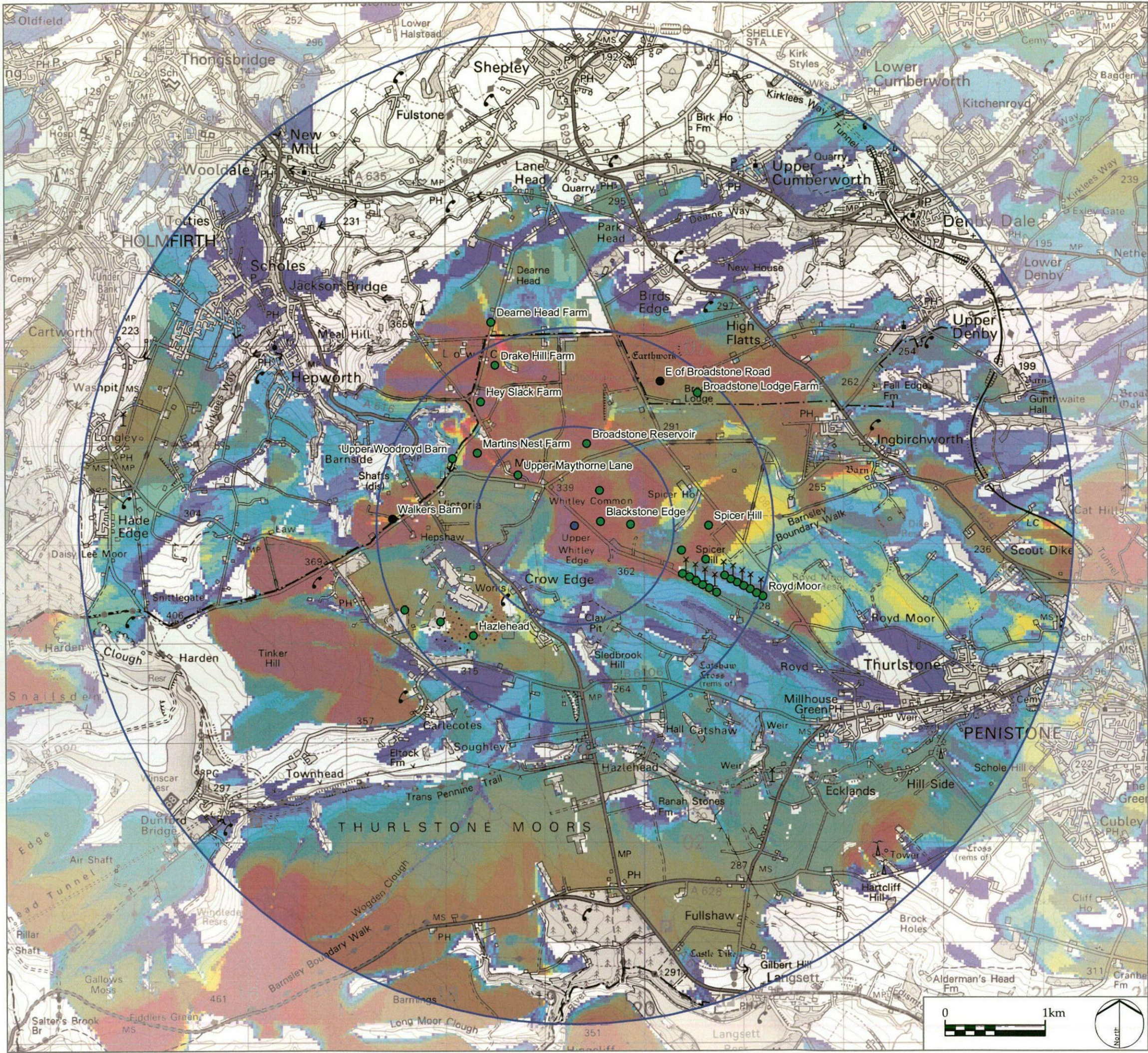
No dimensions are to be scaled from this drawing.  
All dimensions are to be checked on site.  
Area measurements for indicative purposes only.

© LDA Design Consulting Ltd. Quality Assured to BS EN ISO 9001 : 2008

Sources: Ordnance Survey



X:\JOBS\4722\_MAYTHORNE\_FARM\GIS\PROJECTS\4722\_CLVIA3.MXD



**LEGEND**

- Turbines
- Distance from turbines (1, 2, 5km)

**Cumulative Turbines**

- Operational wind farms (individually labelled)
- Consented wind farms (individually labelled)

**Cumulative Visibility to Hub Height**

No wind farms visible		plus New Maythorne Farm
1 wind farms visible		
2 wind farms visible		
3 wind farms visible		
4 wind farms visible		
5 wind farms visible		
6 wind farms visible		
7 wind farms visible		
8 wind farms visible		
9 wind farms visible		
10 wind farms visible		
11 wind farms visible		
12 wind farms visible		
13 wind farms visible		
14 wind farms visible		

This drawing is based upon computer generated Zone of Theoretical Visibility (ZTV) studies produced using the viewshed routine in the ESRI ArcGIS Suite. The areas shown are the maximum theoretical visibility, taking into account topography, principal woodlands and settlements, which have been included in the model with the heights obtained from Nextmap 25.

The model does not take into account any localised features such as small copses, hedgerows or individual trees and therefore still gives an exaggerated impression of the extent of visibility. The actual extent of visibility on the ground will be less than that suggested by this plan and visibility from principal settlements is likely to be possible from peripheral areas only.

The ZTV includes an adjustment that allows for Earth's curvature and light refraction. It is based on Nextmap 25 terrain data and has a 25m<sup>2</sup> resolution.

# LDĀ DESIGN

PROJECT TITLE  
**NEW MAYTHORNE FARM TURBINE**

DRAWING TITLE  
**Figure CLVIA3:  
 Cumulative ZTV Study  
 Operational and Consented Wind Farms**

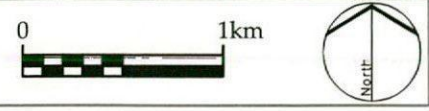
ISSUED BY	Peterborough	T: 01733 310 471
DATE	Aug 2015	DRAWN VW
SCALE @A3	1:38,000	CHECKED RK
STATUS	Final	APPROVED RK

**DWG. NO. 4722\_CLVIA3**

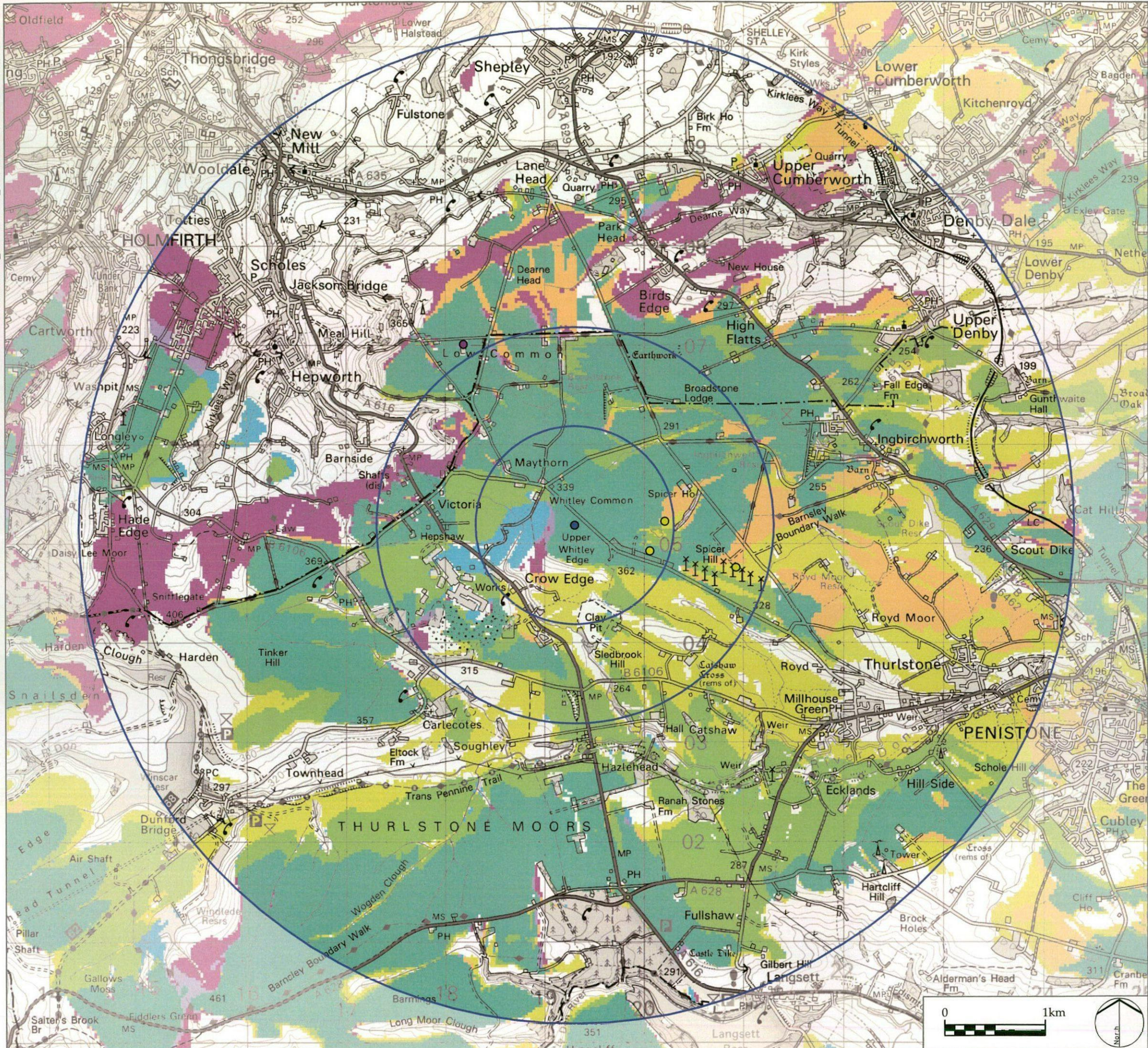
No dimensions are to be scaled from this drawing.  
 All dimensions are to be checked on site.  
 Area measurements for indicative purposes only.

© LDA Design Consulting Ltd. Quality Assured to BS EN ISO 9001 : 2008

Sources: Ordnance Survey, Nextmap



X:\JOBS\4722\_MAYTHORNE\_FARM\GIS\PROJECTS\4722\_CLVIA4.MXD



**LEGEND**

- Turbines
- Distance from turbines (1, 2, 5km)

Cumulative Turbines - Wind Farms in Planning

- Spicer Hill Extension
- Heyside Farm

Cumulative Visibility to Hub Height

Spicer Hill Extension

Heyside Farm

This drawing is based upon computer generated Zone of Theoretical Visibility (ZTV) studies produced using the viewshed routine in the ESRI ArcGIS Suite. The areas shown are the maximum theoretical visibility, taking into account topography, principal woodlands and settlements, which have been included in the model with the heights obtained from Nextmap 25.

The model does not take into account any localised features such as small copses, hedgerows or individual trees and therefore still gives an exaggerated impression of the extent of visibility. The actual extent of visibility on the ground will be less than that suggested by this plan and visibility from principal settlements is likely to be possible from peripheral areas only.

The ZTV includes an adjustment that allows for Earth's curvature and light refraction. It is based on Nextmap 25 terrain data and has a 25m<sup>2</sup> resolution.

# LDĀ DESIGN

PROJECT TITLE  
**NEW MAYTHORNE FARM TURBINE**

DRAWING TITLE  
**Figure CLVIA4:  
Cumulative ZTV Study  
New Maythorne Farm Turbine and wind projects  
in planning**

ISSUED BY	Peterborough	T: 01733 310 471
DATE	Aug 2015	DRAWN VW
SCALE @A3	1:38,000	CHECKED RK
STATUS	Final	APPROVED RK

**DWG. NO. 4722\_CLVIA 4**

No dimensions are to be scaled from this drawing.  
All dimensions are to be checked on site.  
Area measurements for indicative purposes only.

© LDA Design Consulting Ltd. Quality Assured to BS EN ISO 9001 : 2008

Sources: Ordnance Survey, Nextmap

