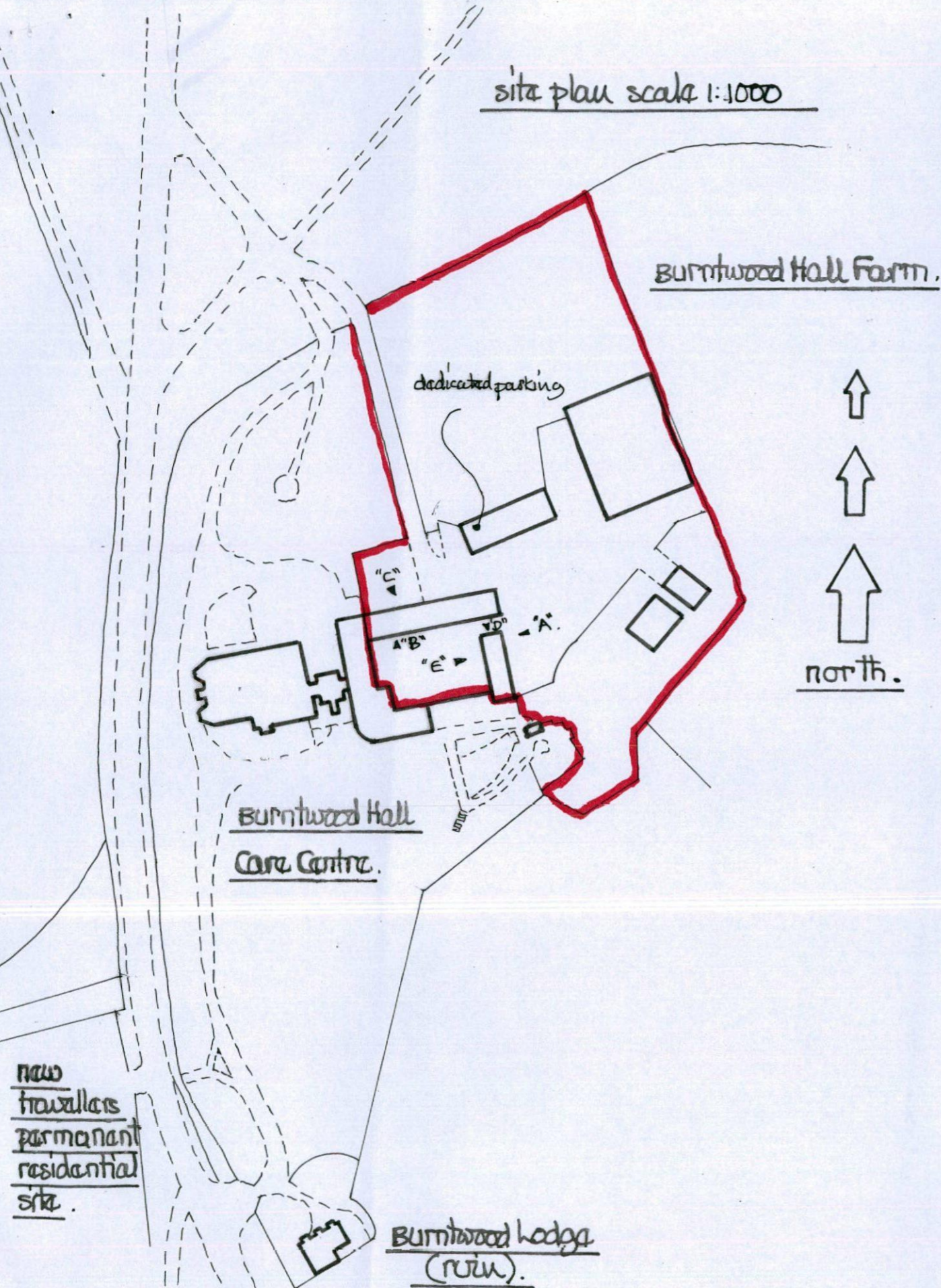
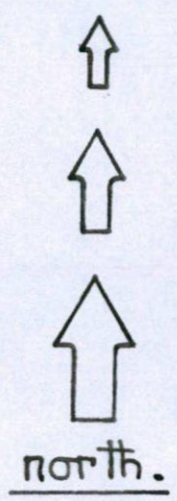


site plan scale 1:1000



Burntwood Hall Farm.

dedicated parking

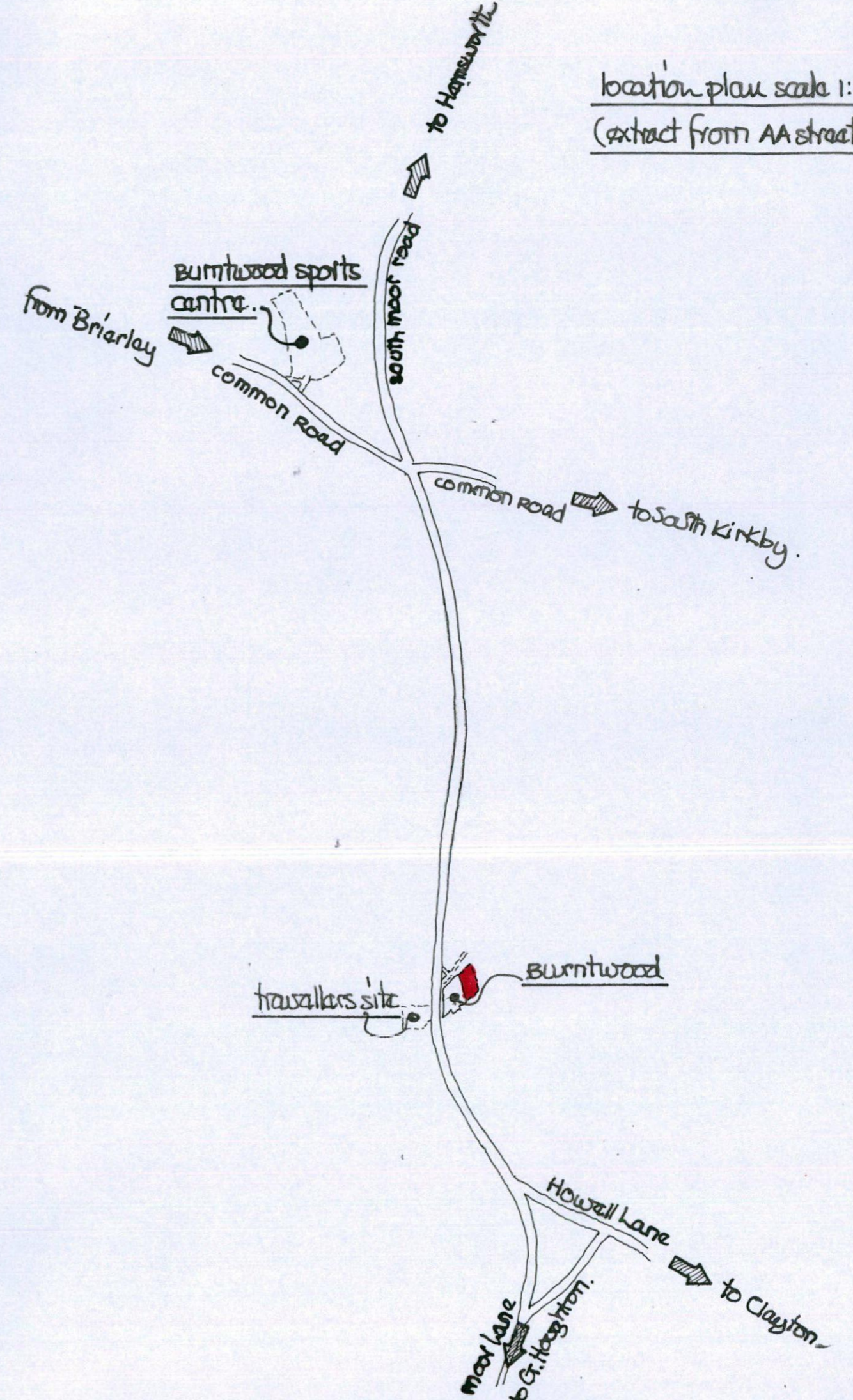


Burntwood Hall  
Care Centre.

new  
travellers  
permanent  
residential  
site.

Burntwood hedge  
(ruin).

location plan scale 1:17500  
(extract from AA street map).



Burntwood sports  
centre.

from Briarlay

common road

to Hamsbury Hill

common road

to South Kirkby

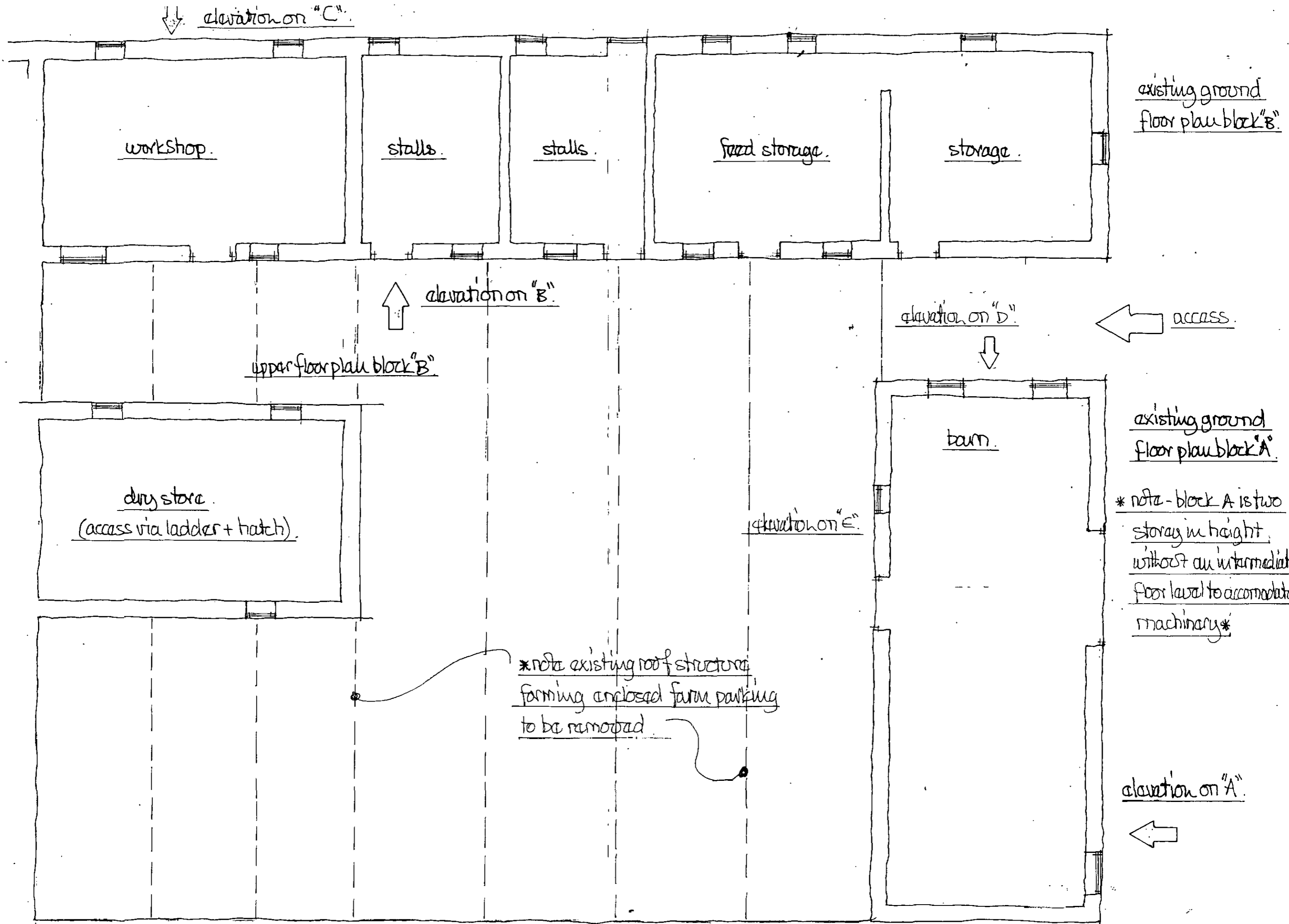
travellers site

Burntwood

Howall Lane

to Clayton

moor lane  
to G. Houghton



elevation on "C"

workshop.

stalls.

stalls.

feed storage.

storage.

existing ground floor plan block "B"

elevation on "B"

upper floor plan block "B"

dry store  
(access via ladder + hatch).

elevation on "D"

access.

barn.

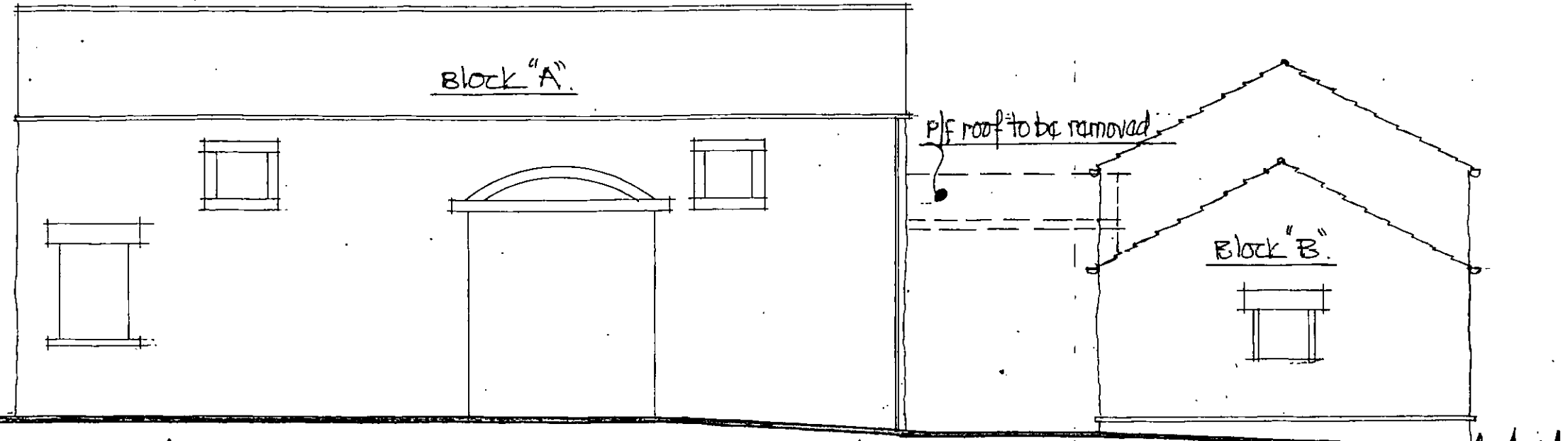
existing ground floor plan block "A"

elevation on "E"

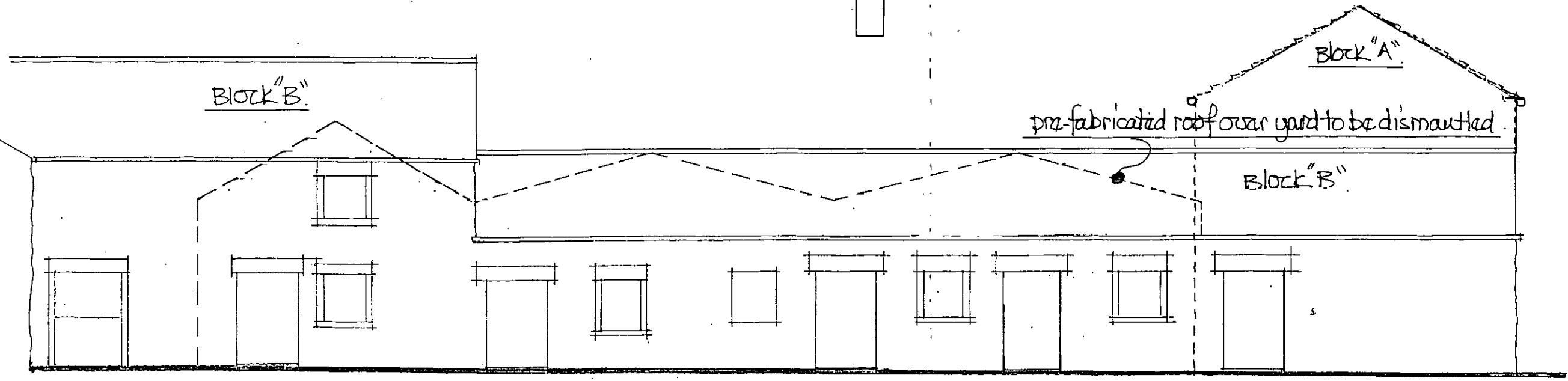
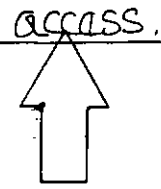
\* note - block A is two stories in height, without an intermediate floor level to accommodate machinery\*

\*note existing roof structure forming enclosed farm parking to be removed

elevation on "A"

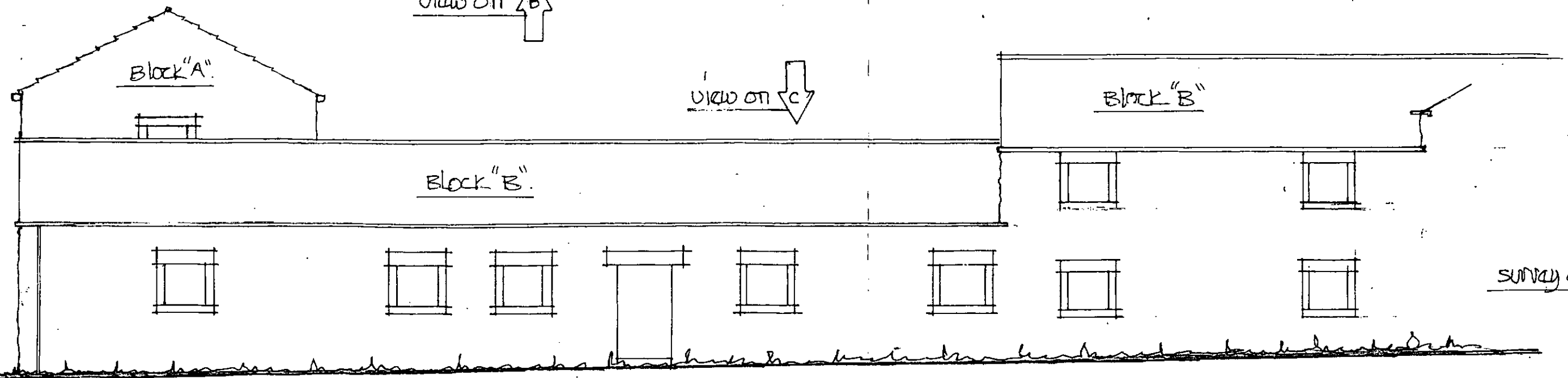


view on ↑ A

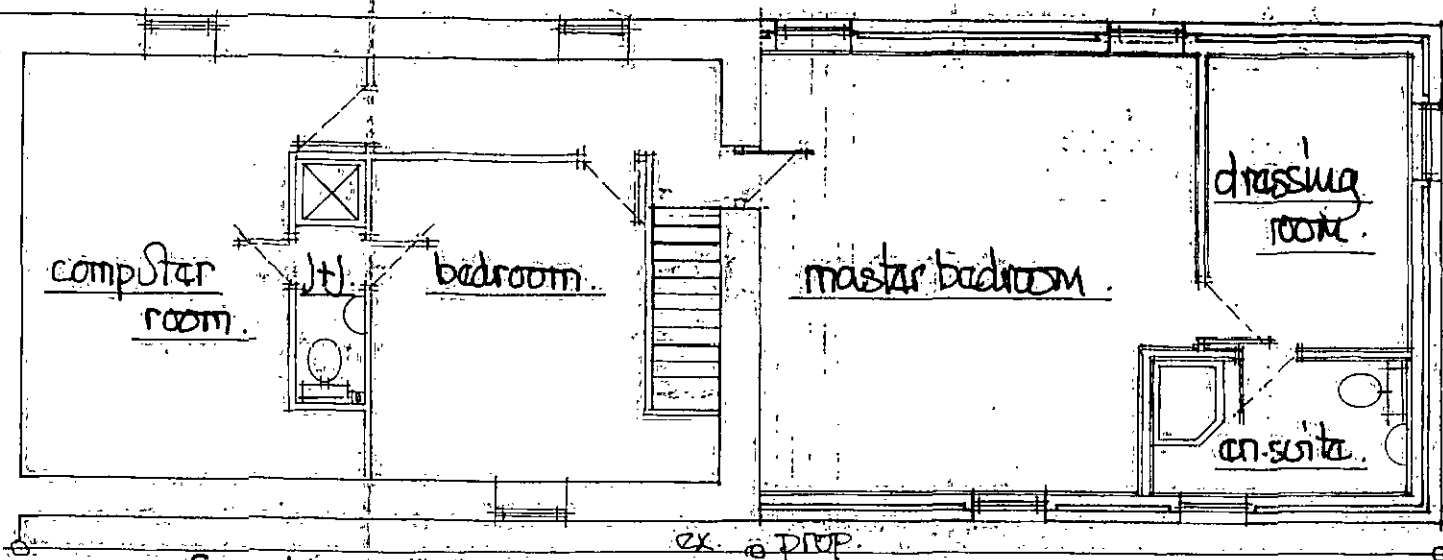


view on ↑ B

view on ↓ C



survey details 1:100m

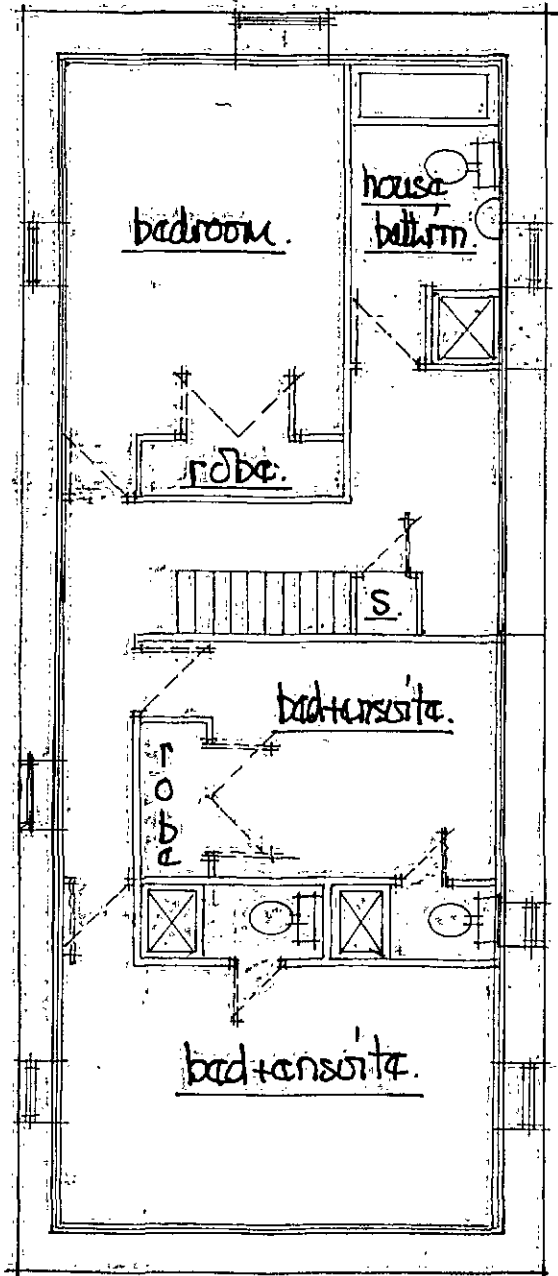
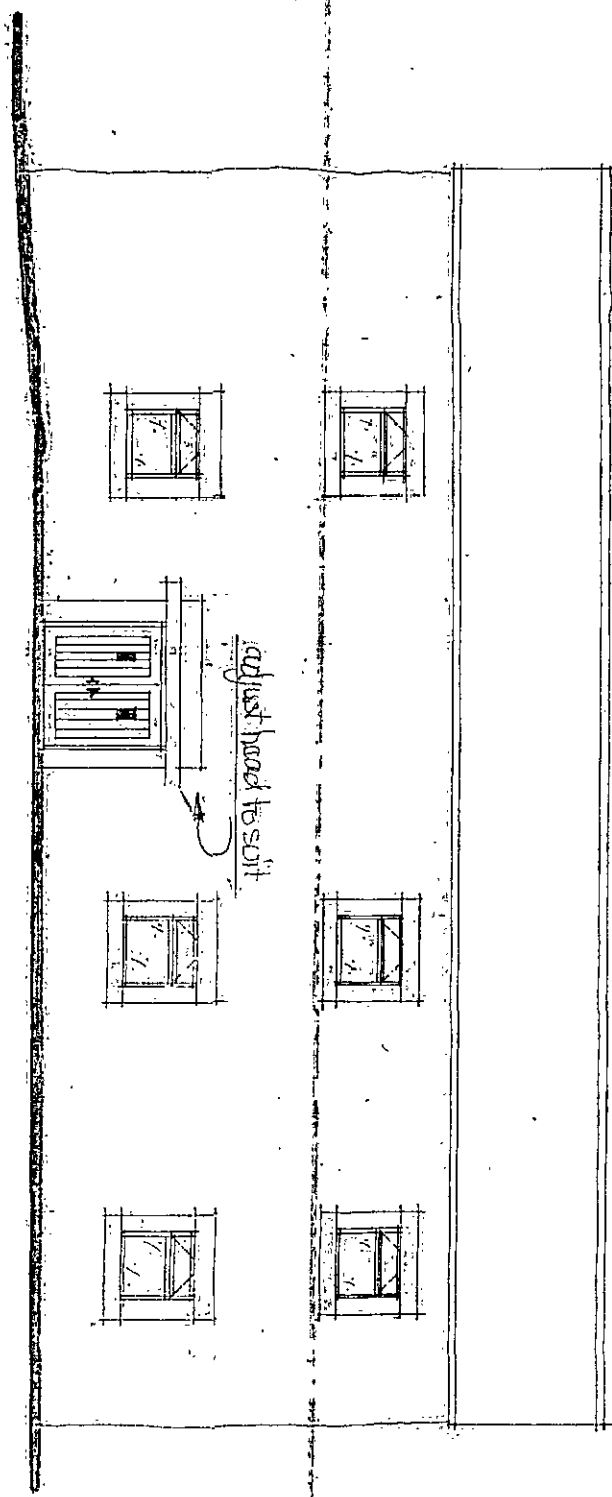


upper floor block "B"

ex. @ PROP.

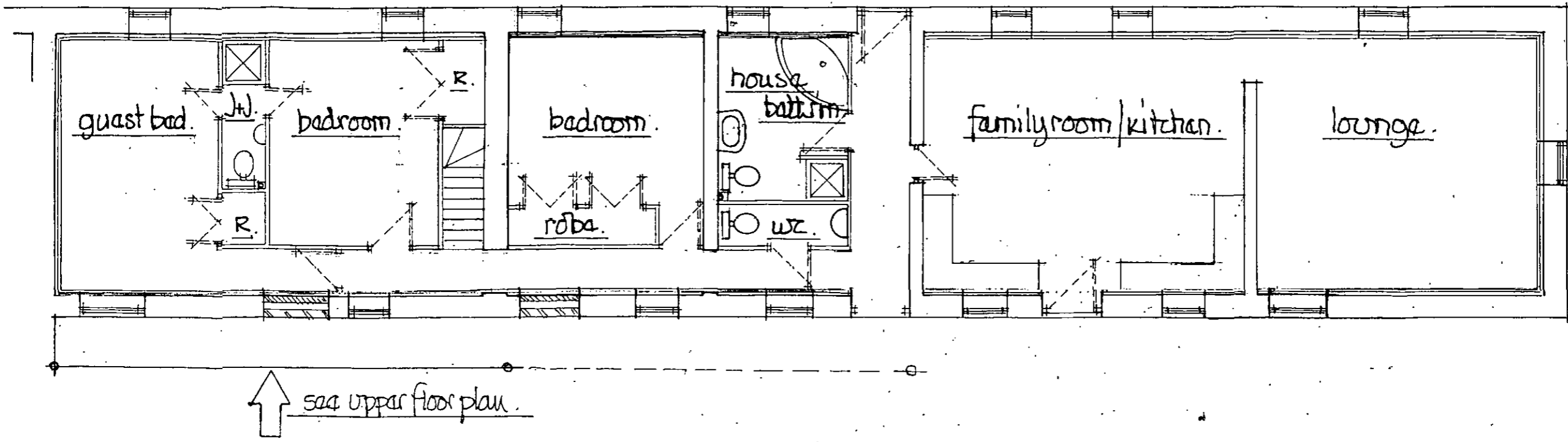
scale: 1:100m.

upper floor block "A"

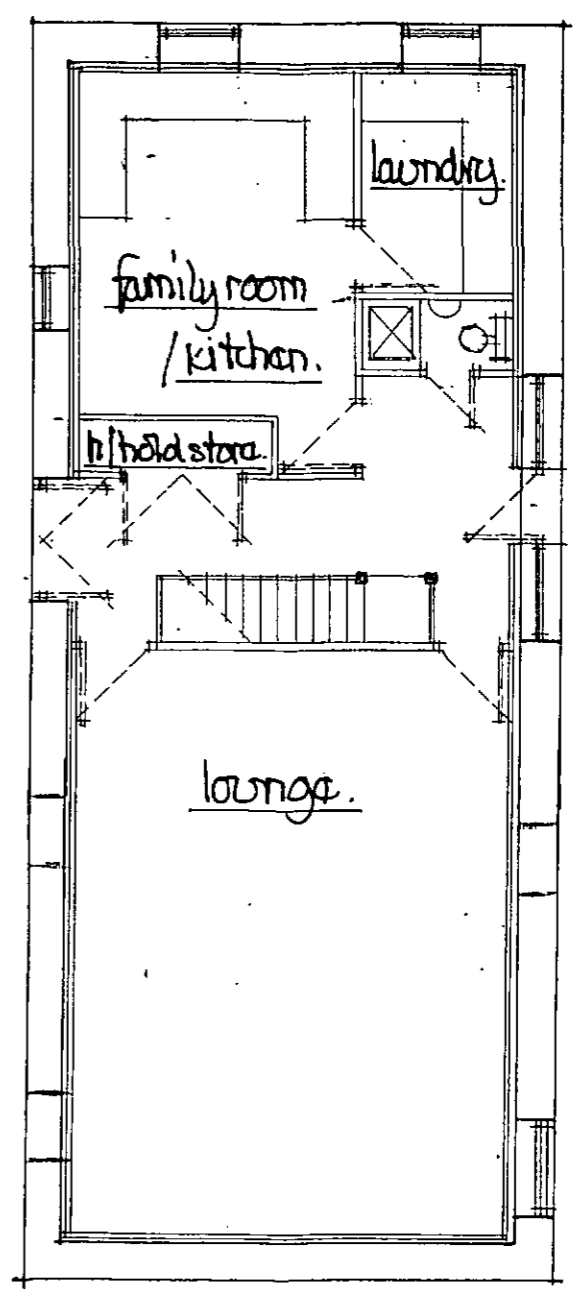


↑ "E"

scale 1:100m.  
ground floor plan  
block "B"

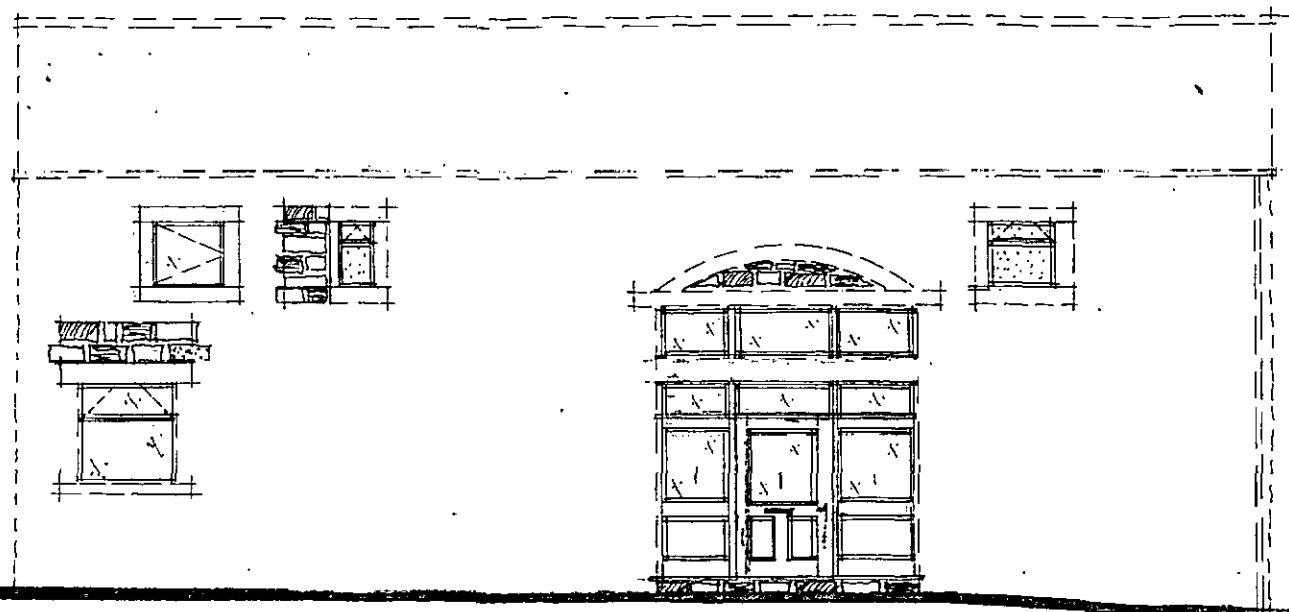


ground floor plan  
block "A"

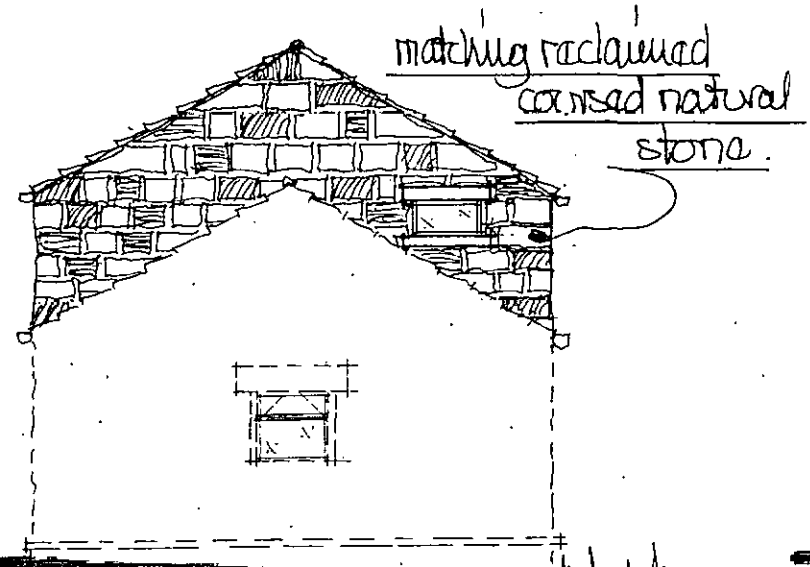


see upper  
floor plan

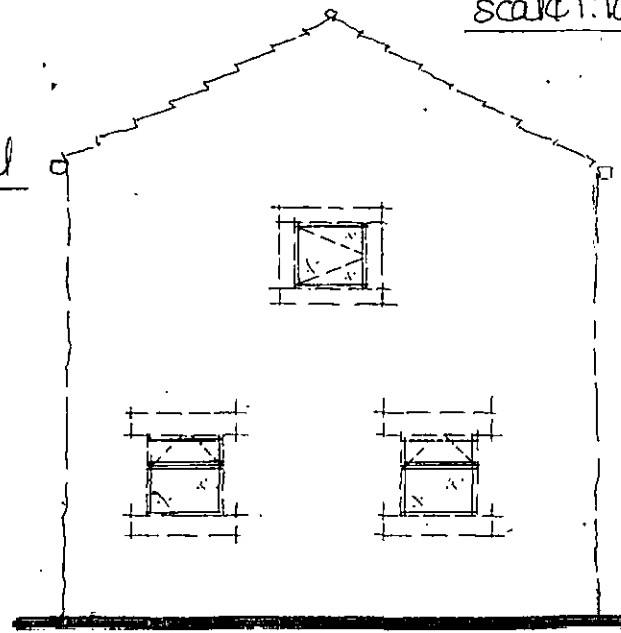
scale 1:100 m.



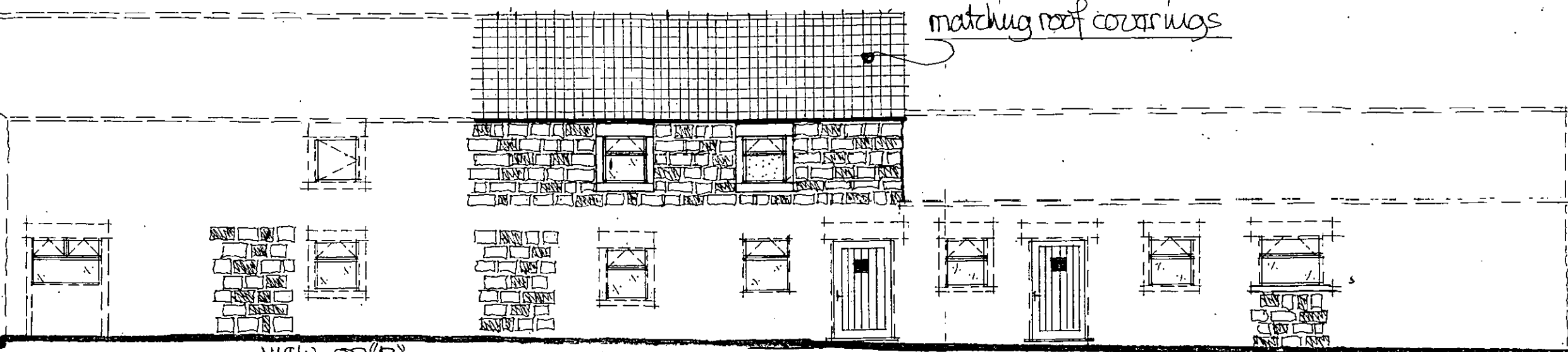
VIEW ON "A"



matching reclaimed  
coursed natural  
stone.



VIEW ON "D"



matching roof coverings

VIEW ON "B"



VIEW ON "C"

