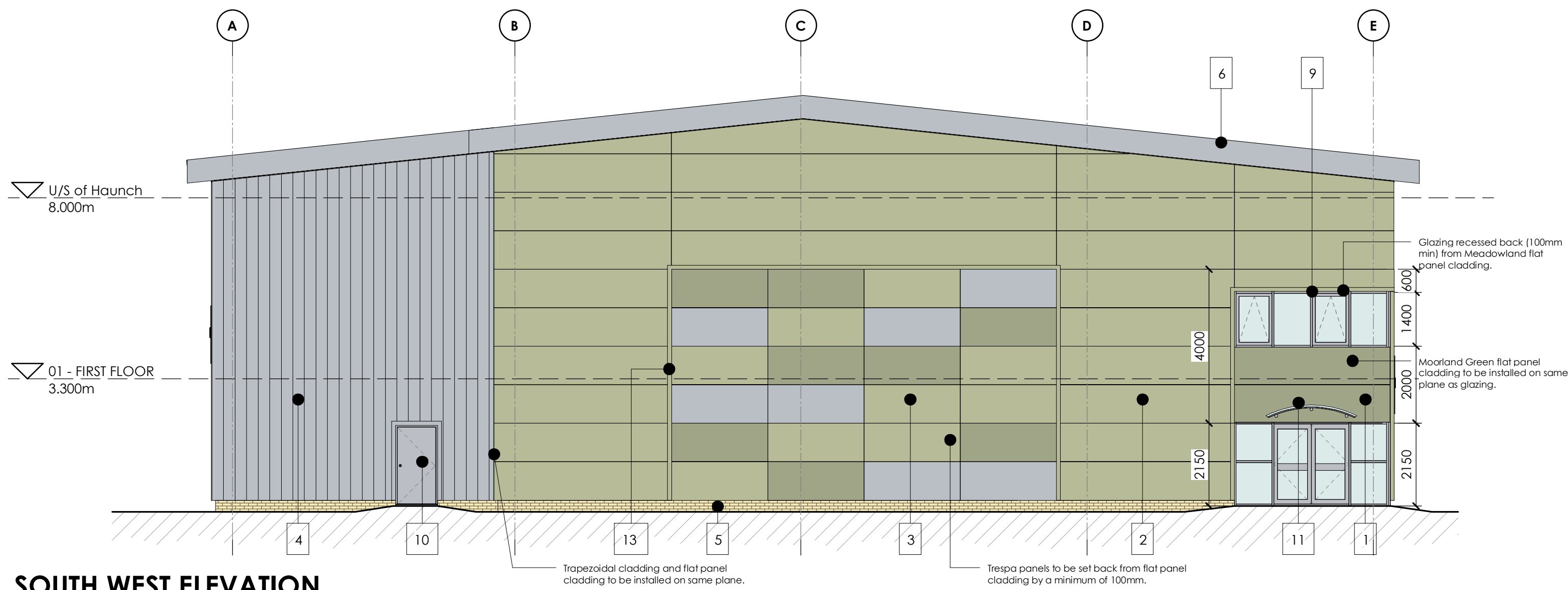


This drawing is to be read in conjunction with all other relevant Architects, Engineers & Sub - Contractors drawings / Details.

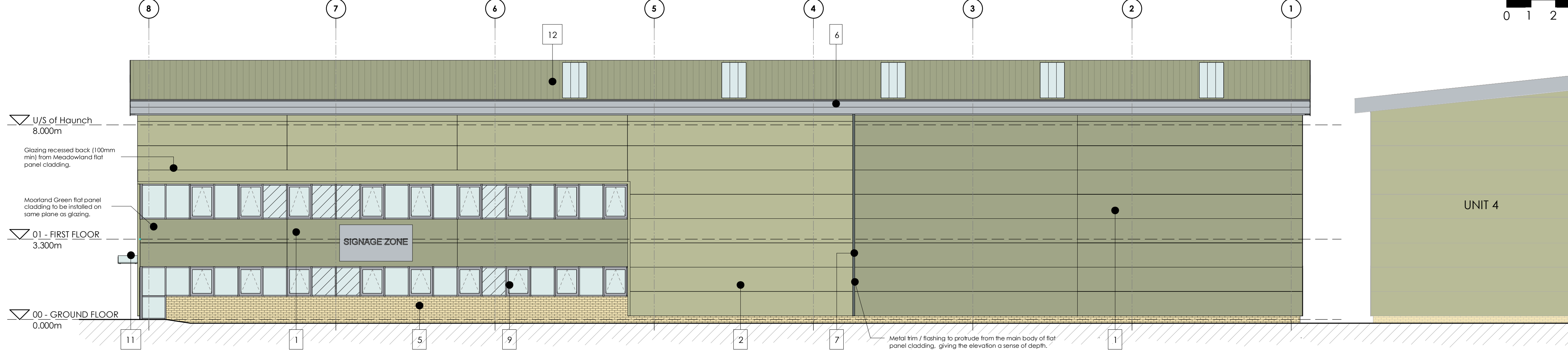
This drawing is subject to Client and Building Control Approval.

Final Steelwork and grid layout is subject to specialist steel design.

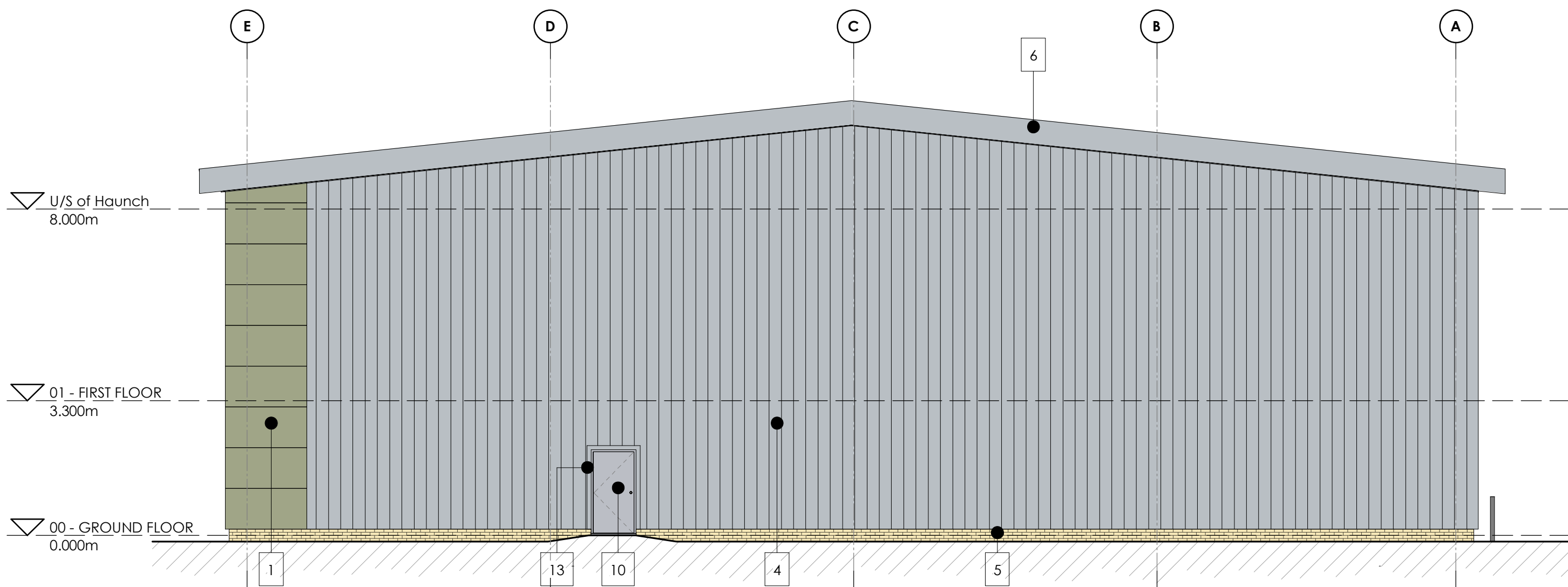
Any foundations / floor slab shown are diagrammatic and subject to specialist design / details.



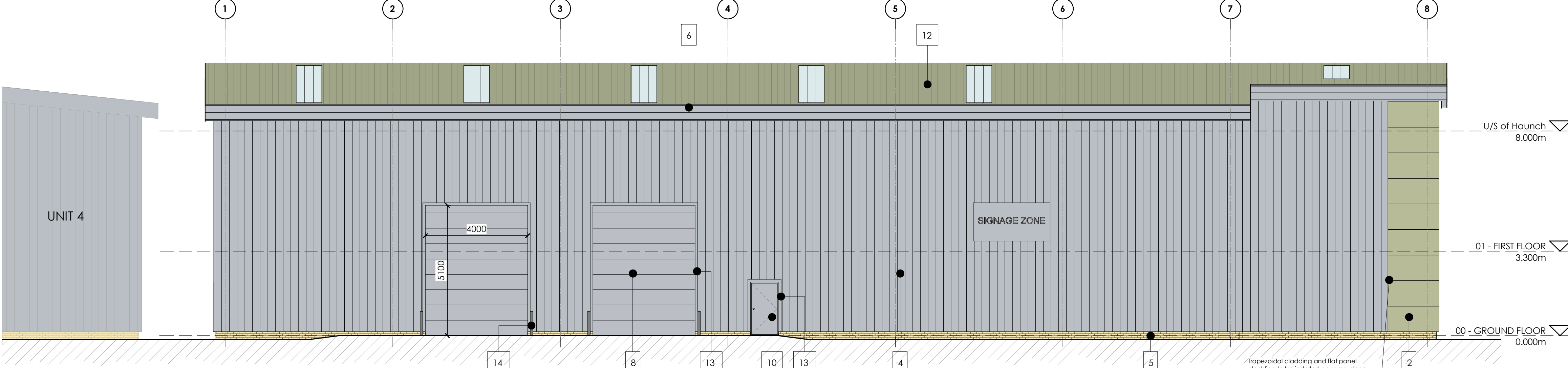
SOUTH WEST ELEVATION  
1 : 100



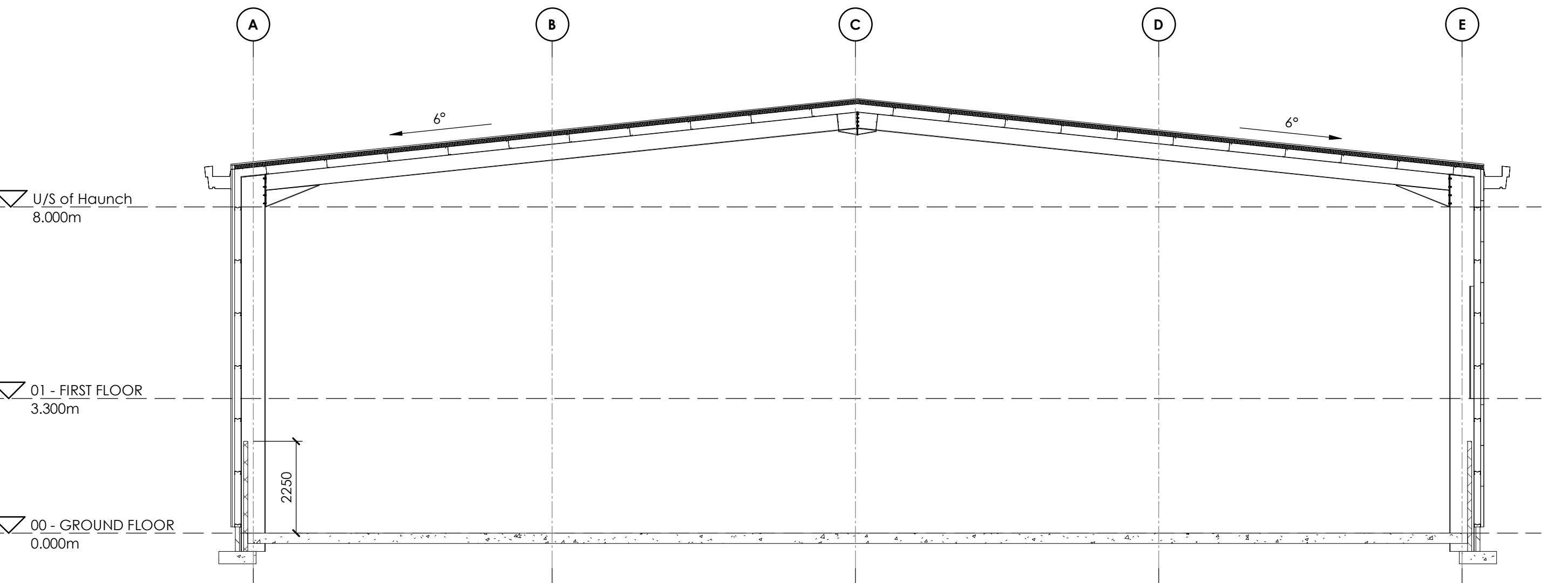
SOUTH EAST ELEVATION  
1 : 100



NORTH EAST ELEVATION  
1 : 100



NORTH WEST ELEVATION  
1 : 100



GA SECTION  
1 : 100

| KEY | MATERIAL SPECIFICATION  | MATERIAL COLOUR   | TATA STEEL CODE |
|-----|---|---|-----------------|
| 1   | Tata Trimapanel micro-rib (or similar approved) panel cladding system, with factory finish. | Moorland Green  | 12B21           |
| 2   | Tata Trimapanel micro-rib (or similar approved) panel cladding system, with factory finish. | Meadowland  | 12B17           |
| 3   | Trespa Paneling   | Multicoloured   | N/A             |
| 4   | Tata Trisomet (or similar approved) trapezoidal cladding system, with factory finish.       | Albatross   | 18B17           |
| 5   | Brickwork   | Buff Brick + Natural Mortar                                 | N/A             |
| 6   | PPC aluminium (or similar approved) fascias and soffits.                                    | Albatross   | 18B17           |
| 7   | Factory finished steel feature flashings.   | Merlin Grey   | 18B25           |
| 8   | Insulated sectional overhead loading doors, with factory finish.                            | RAL 9006  | N/A             |
| 9   | PPC aluminium windows/door frames, double glazed with anti-sun glass.                       | RAL 9006  | N/A             |
| 10  | High security factory finished steel pedestrian doors                                       | RAL 9006  | N/A             |
| 11  | Glass canopy, with painted steel frame  | RAL 9006  | N/A             |
| 12  | Tata Trisomet (or similar approved) trapezoidal roof cladding system, with factory finish.  | Moorland Green  | 12B21           |
| 13  | Factory finished steel flashings  | To match cladding   | N/A             |
| 14  | Boilards  | Gloss painted Steel RAL 9006 with yellow horizontal stripes | N/A             |

| Rev   | Description   | Dm | Vtd           | Date     |
|---|---|----|---------------|----------|
| P5  | Minor amendment.  | IR | SW            | 10.07.23 |
| P4  | Cladding amended.   | IR | SW            | 29.06.23 |
| P3  | First floor level amended, signage added to north west elevation  | IR | SW            | 31.05.23 |
| P2  | First floor windows amended to have panels above opening lights, 600mm cladding panel removed below window. | IR | SW            | 16.05.23 |
| P1  | Issued for Planning   | IR | SW            | 21.04.23 |
| As outlined in section 2.3 of the CIBB Industry Guidance to Designers, insignificant risks can usually be ignored, as can risks arising from routine construction activities, unless the design compounds or significantly alters these risks. In accordance with CDM Regulations 6, 9 and 11, any significant risks relating to the design features shown on this drawing have been identified and are controlled by the following measures to be implemented: |   |    |               |          |
| <input checked="" type="checkbox"/> No significant risks have been identified.  |   |    |               |          |
| <input type="checkbox"/> Significant risks have been identified - refer to notes on drawing for information on residual risks and any control measures to be implemented.   |   |    |               |          |
| Refer to the current Designer's Risk Assessment sheets for further details.   |   |    |               |          |
| Designer's Signature  |   | SW | Date April'23 |          |

Drawing Status  
PLANNING

**williamsaunders**  
architecture : engineering : building consultancy

Newark Beacon  
Catterall Way,  
Newark-on-Trent,  
Nottinghamshire, NG24 2TN.

Also at Leeds, Lincoln & Wiltshire

|                            |                                      |          |       |      |          |        |              |          |    |
|----------------------------|--------------------------------------|----------|-------|------|----------|--------|--------------|----------|----|
| Project                    | Proposed Development,<br>Rockingham. |          |       |      |          |        |              |          |    |
| Client                     | Carnell Management Services Ltd.     |          |       |      |          |        |              |          |    |
| Title                      | Unit 3 - Proposed Elevations         |          |       |      |          |        |              |          |    |
| W5 Project No.             | 12215                                | Drawn by | IR    | Date | April'23 | Scale  | As indicated | Rev      | A0 |
| Drawing/Document Reference |                                      |          |       |      |          |        |              |          |    |
| Project                    | Originator                           | Zone     | Level | Type | Role     | Number | Status       | Revision |    |
| 12215                      | WMS                                  | 03       | ZZ    | D    | A        | 10603  | S8           | P5       |    |