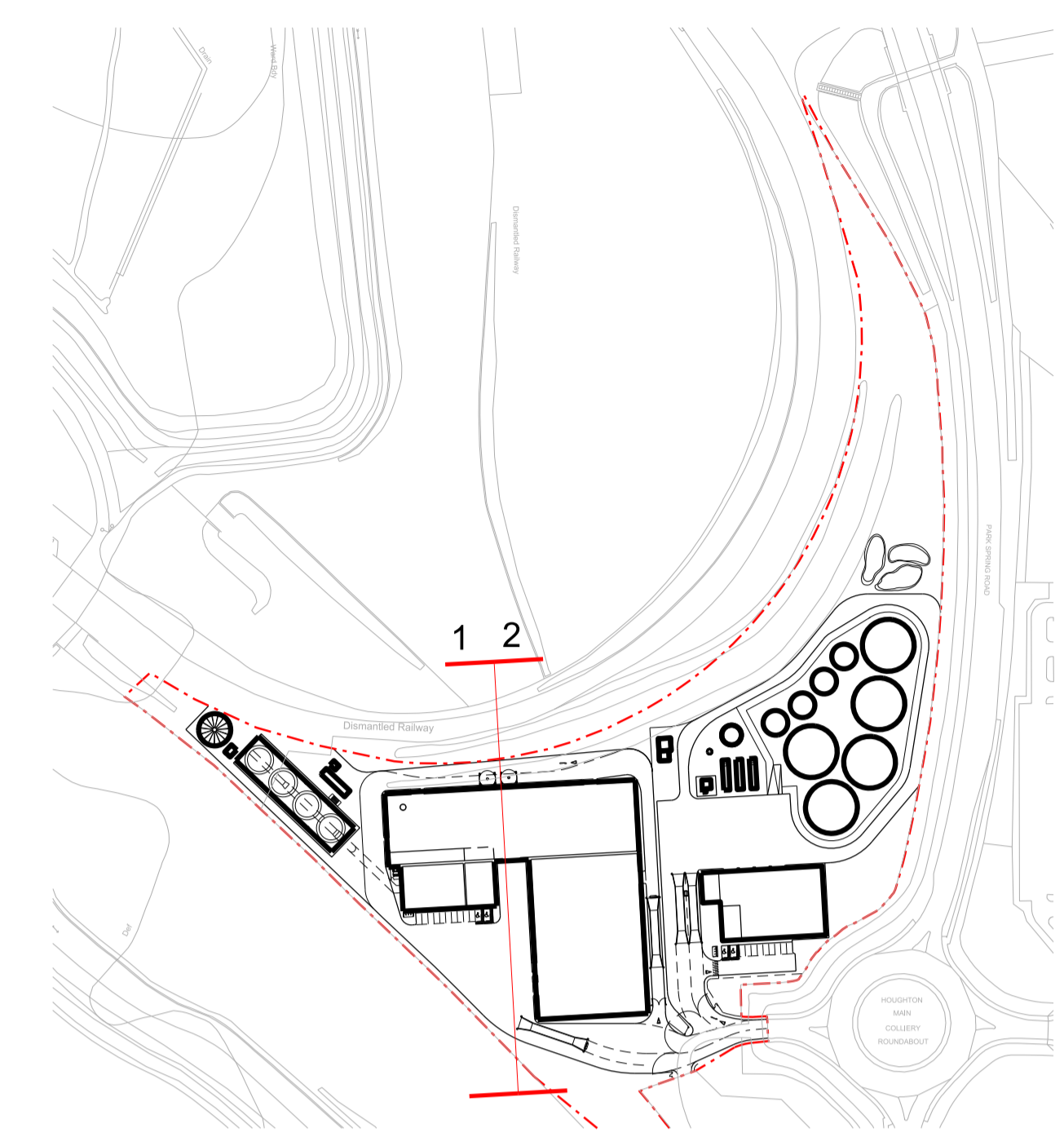


East elevation - 1



Location plan 1:2500@A1

NOTE

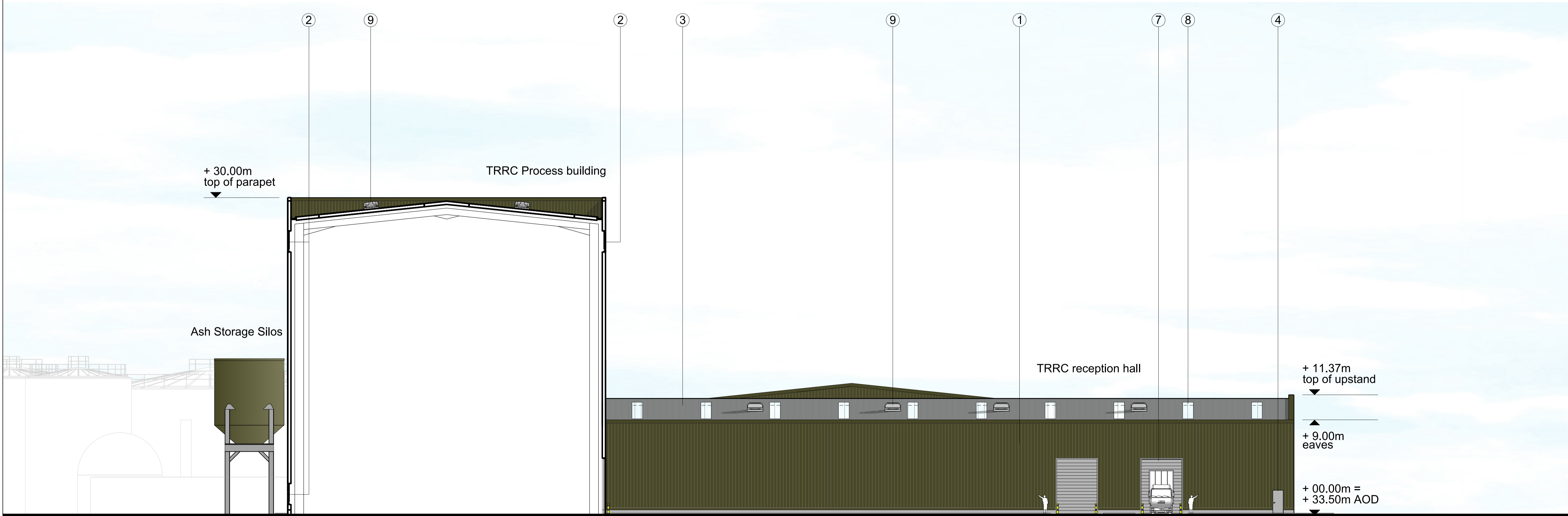
1. THIS DRAWING IS COPYRIGHT STUDIO E LLP
2. THE CONTRACTOR MUST NOT SCALE FROM THE DRAWING ALL DIMENSIONS TO BE TAKEN FROM DIMENSION STRINGS.
3. WHERE ANY DISCREPANCIES ARE FOUND BETWEEN DIMENSIONS THESE MUST BE BROUGHT TO THE ATTENTION OF THE ARCHITECTS FOR RESOLUTION.
4. WHERE DISCREPANCIES EXIST BETWEEN REFERENCE OR ASSEMBLY DRAWINGS & DETAIL DRAWINGS, THE LATTER TAKE PREFERENCE.

MATERIALS KEY

- 1 Plastic Coated Steel Cladding, Trapezoidal Profile Colour: Olive Green (RAL 100 30 20)
- 2 Metal Ventilation Louvers Colour: Olive Green (RAL 100 30 20)
- 3 Plastic Coated Steel Roof System, Trapezoidal Profile Colour: Pure Grey (RAL 000 55 00)
- 4 PPC Aluminium Window Frames And Doors Colour: Merlin Grey (RAL 180 40 05)
- 5 Grey Engineering Brick Plinth
- 6 Metal Stack Colour: Oyster (RAL 7035)
- 7 Metal Roller Shutter Doors
- 8 In-Plane Polycarbonate Rooflight System
- 9 Roof Vent Cowls

Note: All materials, finishes and colours will be as stated or similar approved

KEY
 --- Site boundary



West elevation - 2

140509	Issued for planning
--------	---------------------

FOR PLANNING

STUDIO E LLP
 Poloce Wharf, Romville Road,
 London, SE16 5RH
 Tel: 020 7355 7100
 Fax: 020 7351 4995

HOUGHTON MAIN REP
 PROJECT

Proposed TRRC
 Process building elevations 3
 DRAWING

1:200@A1 140509
 1:400@A3 DATE

1302_PL008	-	GS
DWG. NO.	REVISION	CHECKED