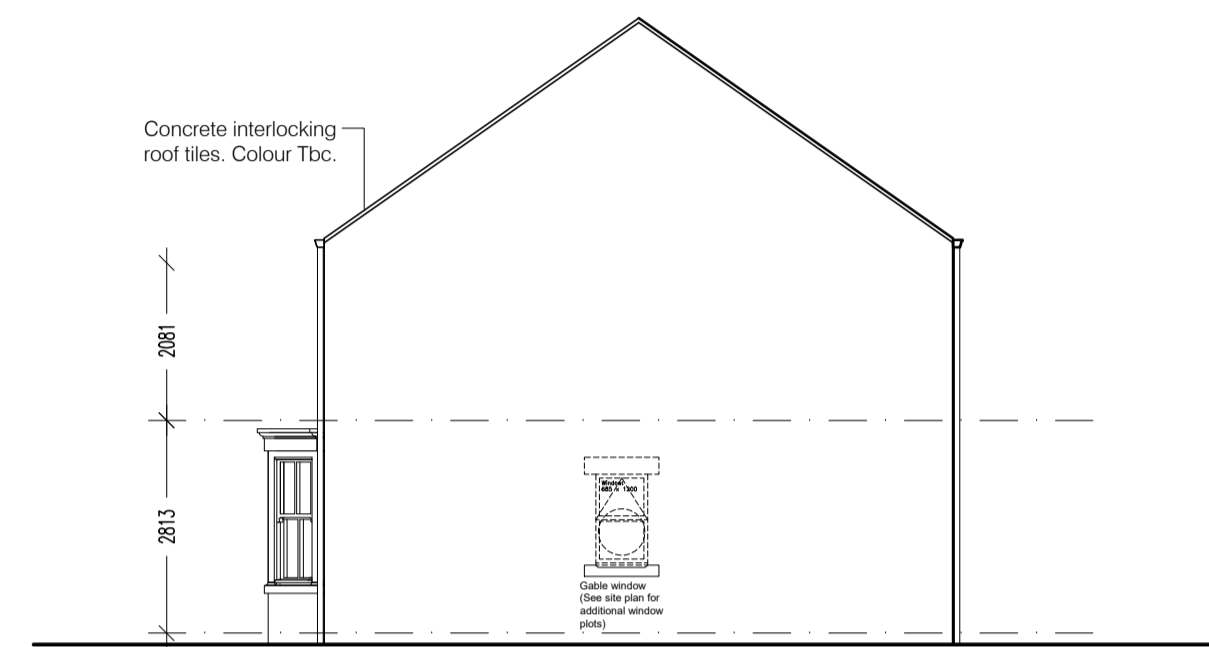


Front Elevation

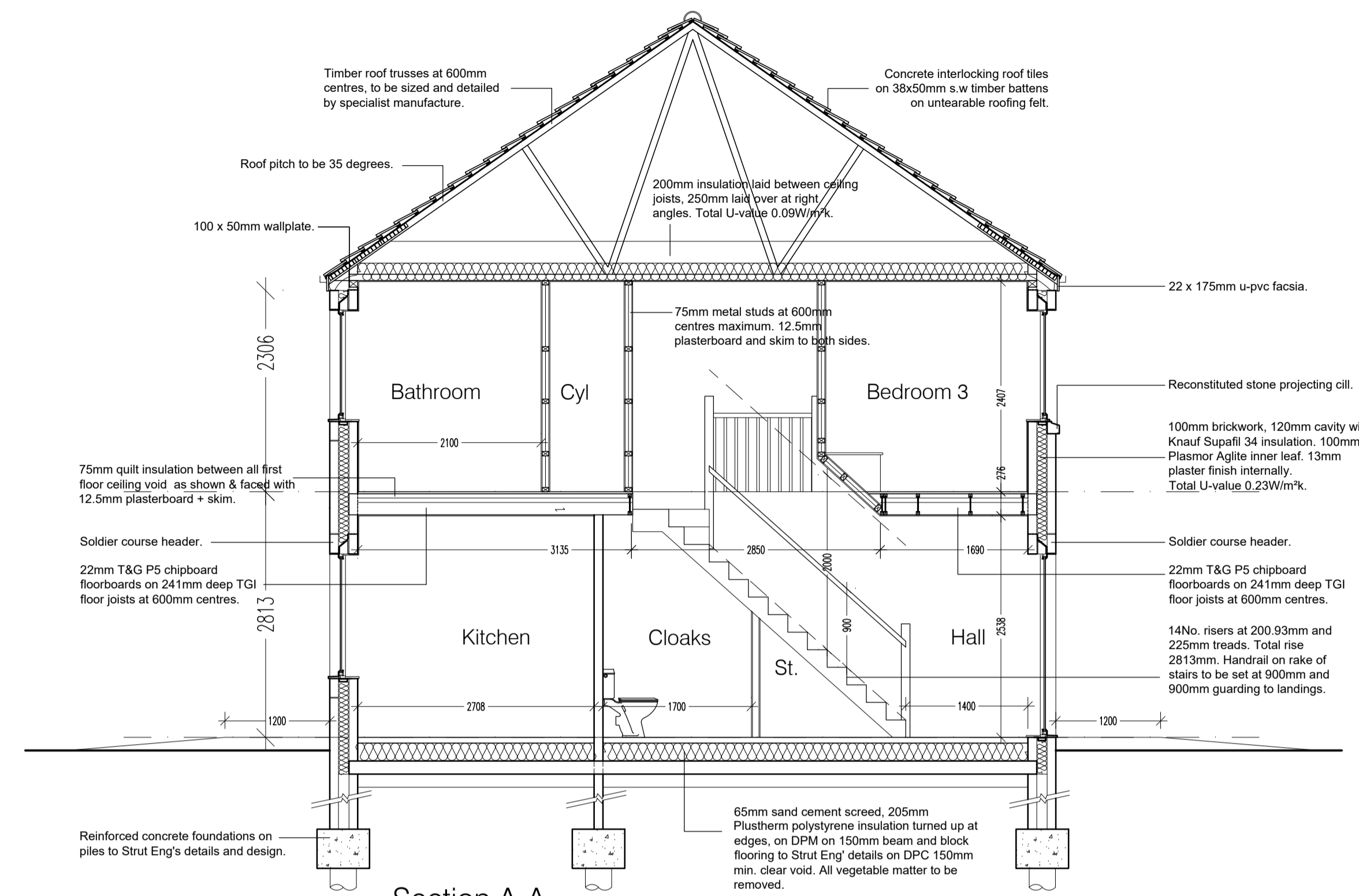
Side Elevation



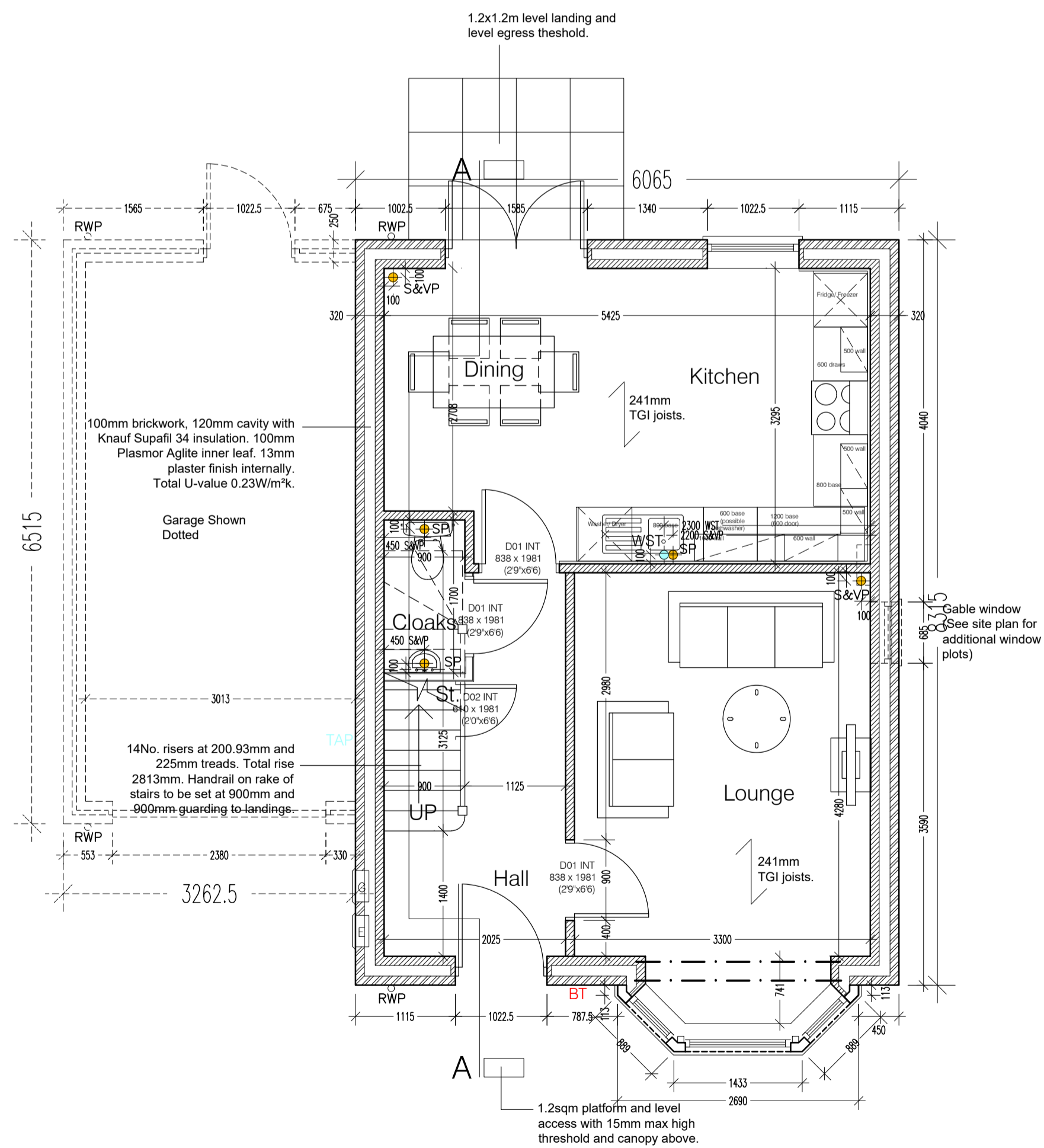
Rear Elevation



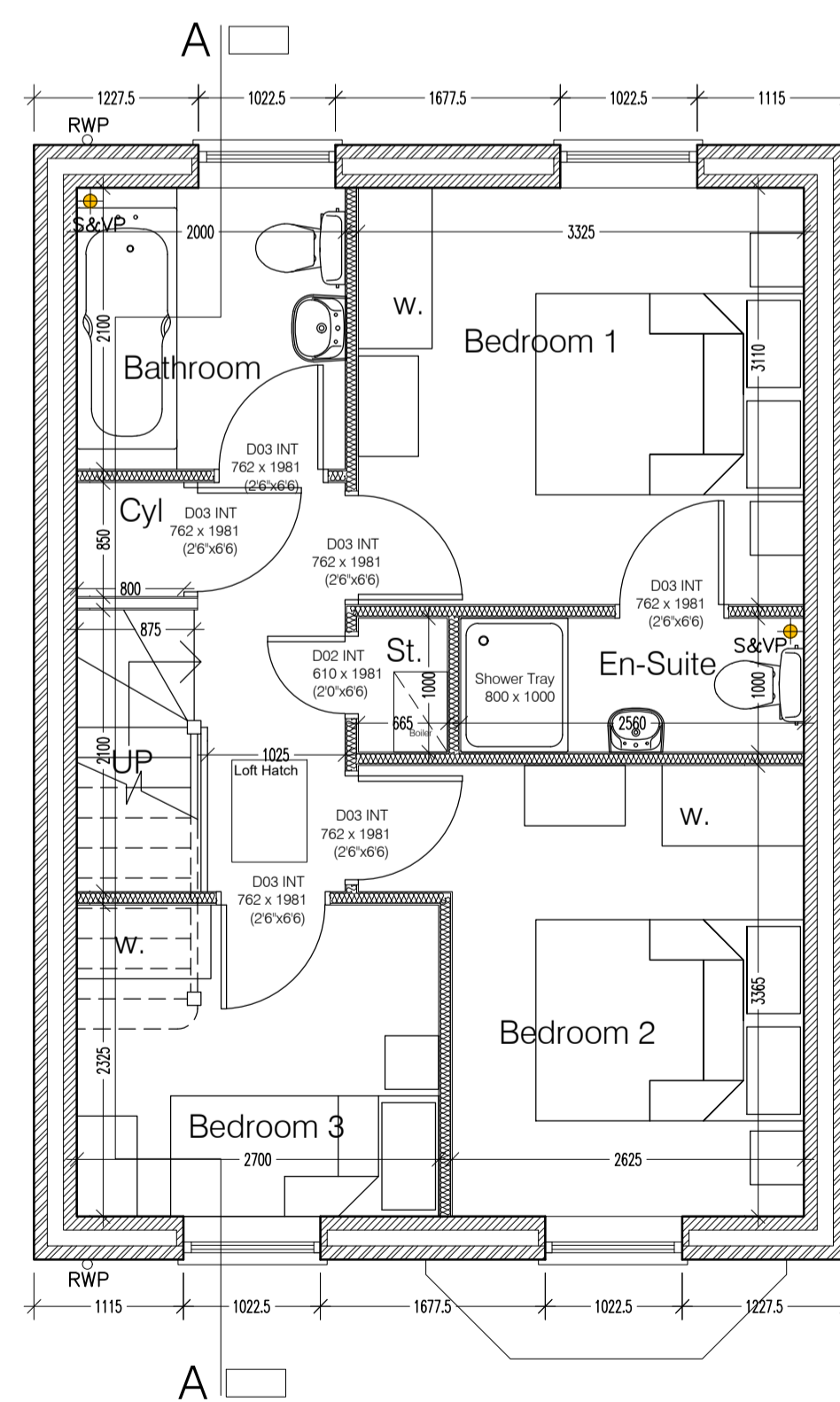
Side Elevation



Section A-A



Ground Floor Plan



First Floor Plan

Type Holly - 4 Bedroom 2 storey

Residential Development at
Doncaster Road, Darfield, Barnsley

Rev E 14th Oct '24 Gable window added for SBD.
Rev D 12th Jun '24 Lounge wall show as brickwork.
Rev C 21st Jul '23 Wall Cavity updated to 120mm cavity
Rev B 22nd Jun '22 SVP positions amended and Gully removed.
Rev A 17th Jan '19 Window to bed 4 corrected in plan.

Project:
Saul Homes
Standard House Types

Title:
House Type 'Holly'
Ground and First Floor Plan
Elevations & Section A-A

Scale: 1:50
Drawn: PU
Date: 11/19
Checked:

Drawing no: SH / ST / 46
Rev: E

Burnwood Office Park
Common Road
Brierley
Barnsley
S72 9ET
T: 01226 707090
F: 01226 707091
info@saulhomes.co.uk
www.saulhomes.co.uk

