

GROUND FLOOR PLAN. (1:200)

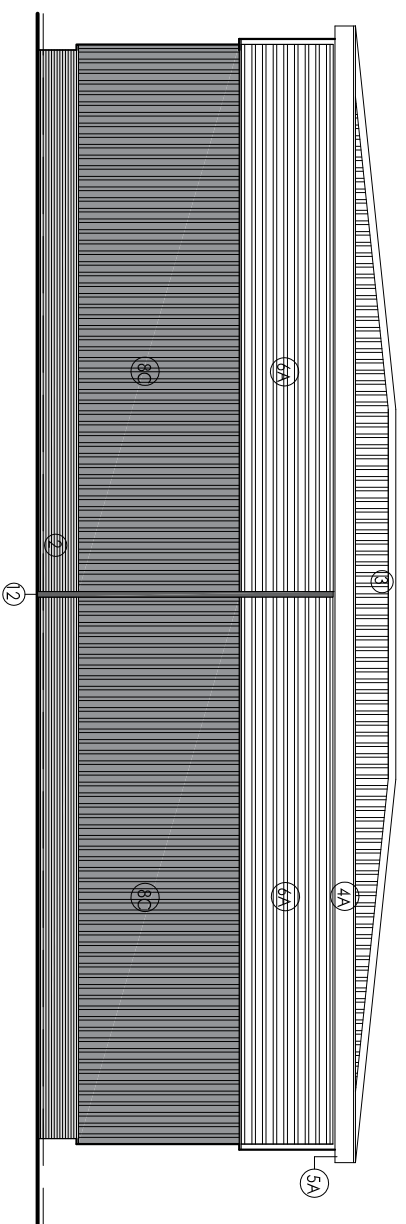
FIRST FLOOR PLAN.

UNIT 7

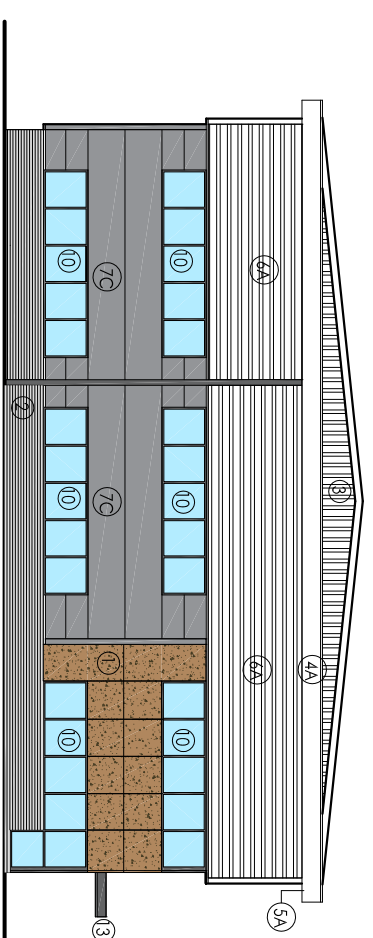
This drawing is subject to Building Regulations Approval.

Materials and Finishes.

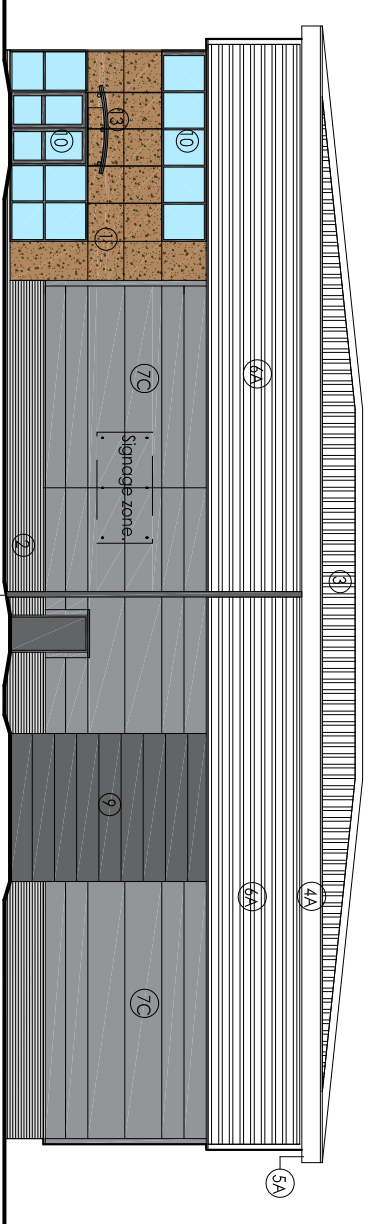
- ① Walls - Trepro - Hiderend Brown NMS
- ② Walls - Brick - Essential Marble Grey, coloured mortar (light Grey)
- ③ Roofs - HF3200 coated steel - Top Steel, Hammer
- ④ Facade - HF3200 coated steel - Top Steel, Hammer
- ⑤ A soffit - HF3200 coated steel - Top Steel, Hammer
- ⑥ Walls - High level cladding - HF3200 coated steel - Top Steel, Hammer
- ⑦ Walls - Flat panel cladding HF3200 coated steel - Top Steel, Alaska Grey
- ⑧ Walls - Steel Cladding HF3200 coated steel - Top Steel, Alaska Grey
- ⑨ Loading Door - HF3200 coated steel - Top Steel, Anthracite
- ⑩ Windows/Doors - Polysider coated aluminium frames - Rd 7012 [Dark Grey] and Glazing - Crystal Blue
- ⑪ Fire Exit Doors - Glass painted steel - Rd 7012 [Dark Grey]
- ⑫ Rain Water Pipes - Rd 7012 [Dark Grey]
- ⑬ Canopy - Glass with Rd 7012 Structure [Dark Grey]



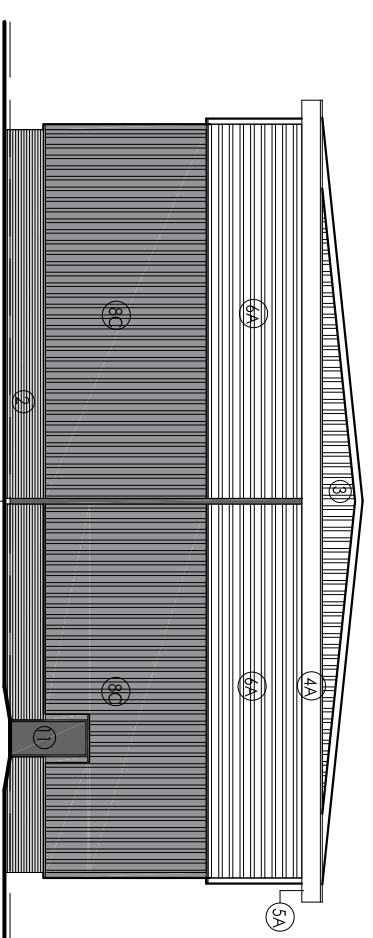
SOUTH WEST.



SOUTH EAST.



NORTH EAST.



NORTH WEST.

Do not scale from this drawing.

www.oneyefordesign.co.uk

Tel 01430 421480
Mob 07713 646411

PROJECT
PROPOSED DEVELOPMENT
CAPITOL PARK
BARNISLEY

UNIT 7
ELEVATION DETAIL

Scale	Drawn By
A3	MCW
Checked By	Date Checked
	13/07/2017
Revision	

MCW614