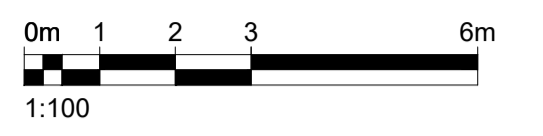


DO NOT SCALE FROM THIS DRAWING. ALL DIMENSIONS TO BE CHECKED ON SITE BY CONTRACTOR. REPORT ANY DISCREPANCIES TO DRAWING AUTHOR AND PROPERTY SERVICES TEAM. DRAWING OR CONTENTS SHOULD NOT BE DUPLICATED WITHOUT PRIOR CONSENT.

DRAWING TO BE READ IN CONJUNCTION WITH ALL OTHER PROJECT DOCUMENTS INCLUDING BUT NOT LIMITED TO DRAWINGS, SPECIFICATIONS, SCHEDULES



NOTES

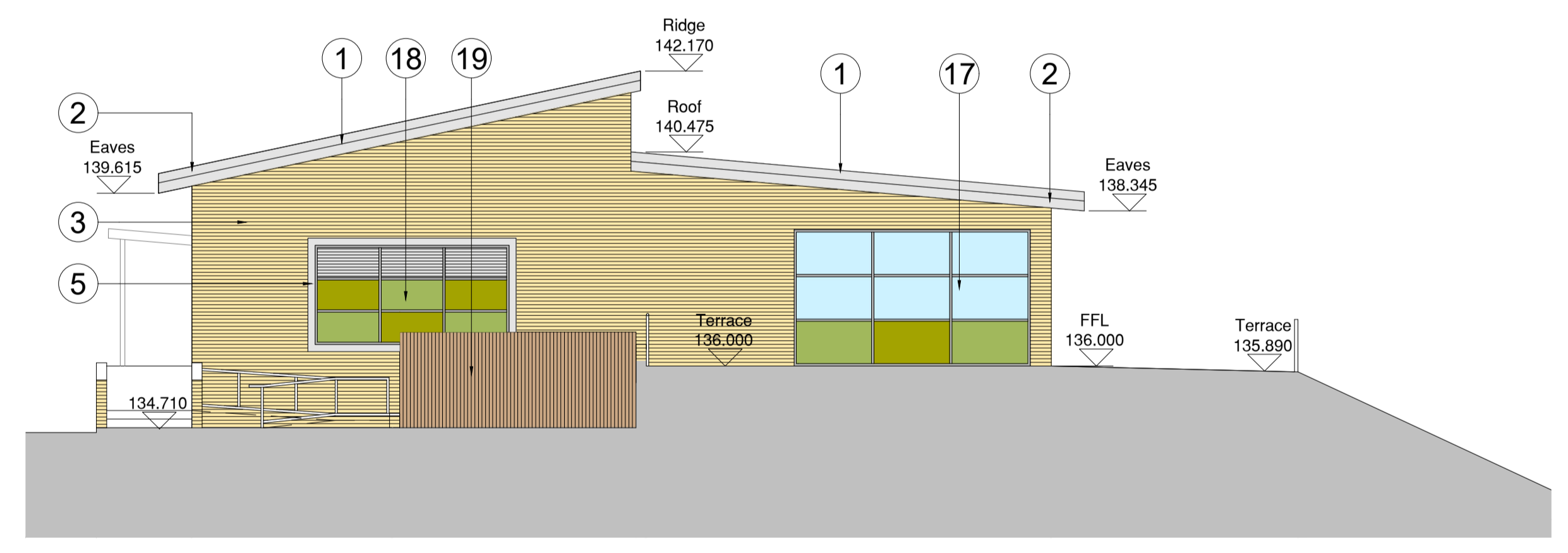
- 1 Polyester powder coated metal standing seam roof. Colour: Grey.
- 2 Polyester powder coated pressed metal fascia and soffit. Colour: Light Grey.
- 3 Facing brickwork. Colour: Buff
- 4 Polyester powder coated aluminium windows. Frame colour: Mid Grey
- 5 Polyester powder coated square profile metal rainwater pipes. Colour: Light Grey
- 6 Polyester powder coated projecting metal window surround. Colour: Light Grey
- 7 Coloured panels to lower sections of window to provide privacy into Studio's
- 8 Externally illuminated sign adjacent to main entrance
- 9 Metal canopy over main entrance. Fascia and Soffit polyester powder coated. Colour: Light Grey. Self finished soffit: Light Grey. Supporting steel columns painted. Colour: Light Grey
- 10 Polyester powder coated aluminium automatic sliding doors and side screens to entrance. Colour: Mid Grey
- 11 Opaque glazing at high level to WC's & Changing Rooms
- 12 Look-a-like window over Plant Room. All panes to be coloured panels as shown on drawing
- 13 Timber fire exit doors with paint finish. Colour: Light Grey
- 14 Composite cladding panels at high level. Colour: Green (as shown on drawing)
- 15 Polyester powder coated glazed aluminium door to Pitch Access. Colour: Mid Grey
- 16 Polyester powder coated aluminium glazing at high level over Reception area. Frame colour: Mid Grey
- 17 Polyester powder coated aluminium curtain wall glazing with double doors (where indicated). Frame colour: Mid Grey. Coloured panels to lower panes.
- 18 Look-a-like window over Plant Room. Coloured panels to lower panes with polyester powder coated louvres to top panes. Frame colour: Mid Grey. Louvre colour: Light Grey
- 19 Timber fence enclosure to external plant
- 20 PV panels to roof



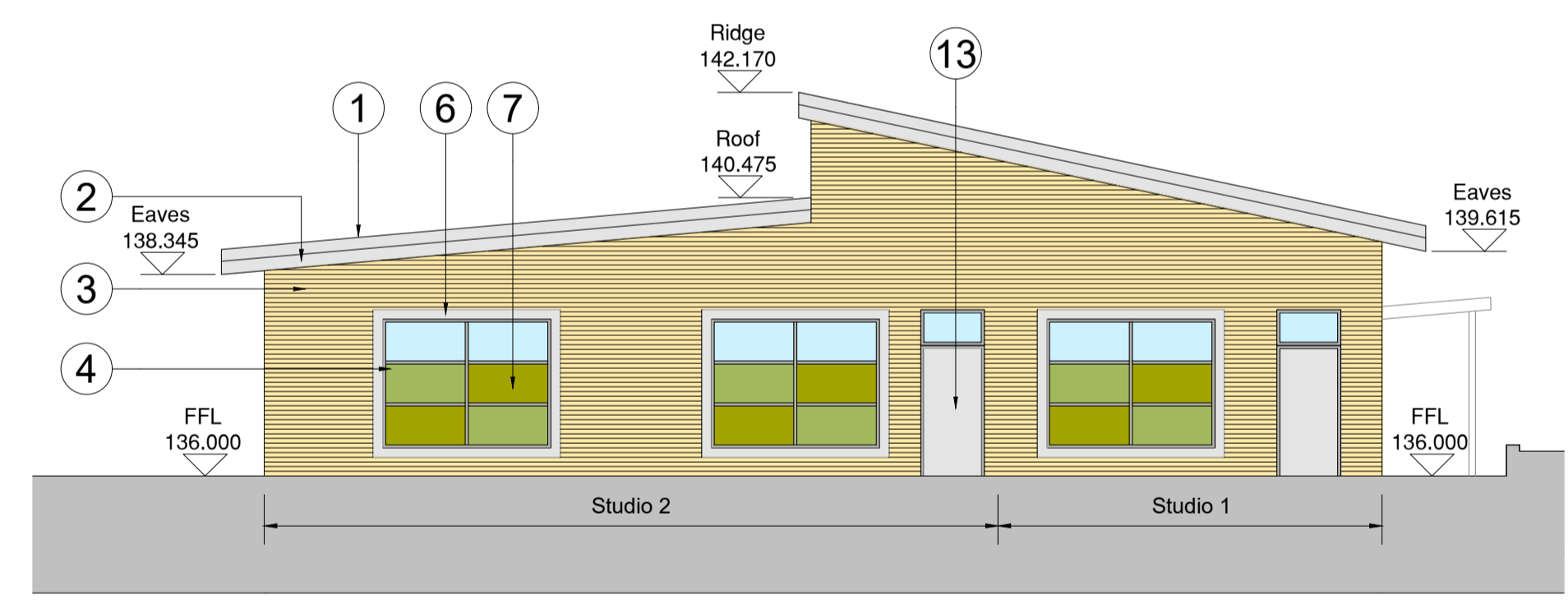
**01 Front Elevation**  
1:100



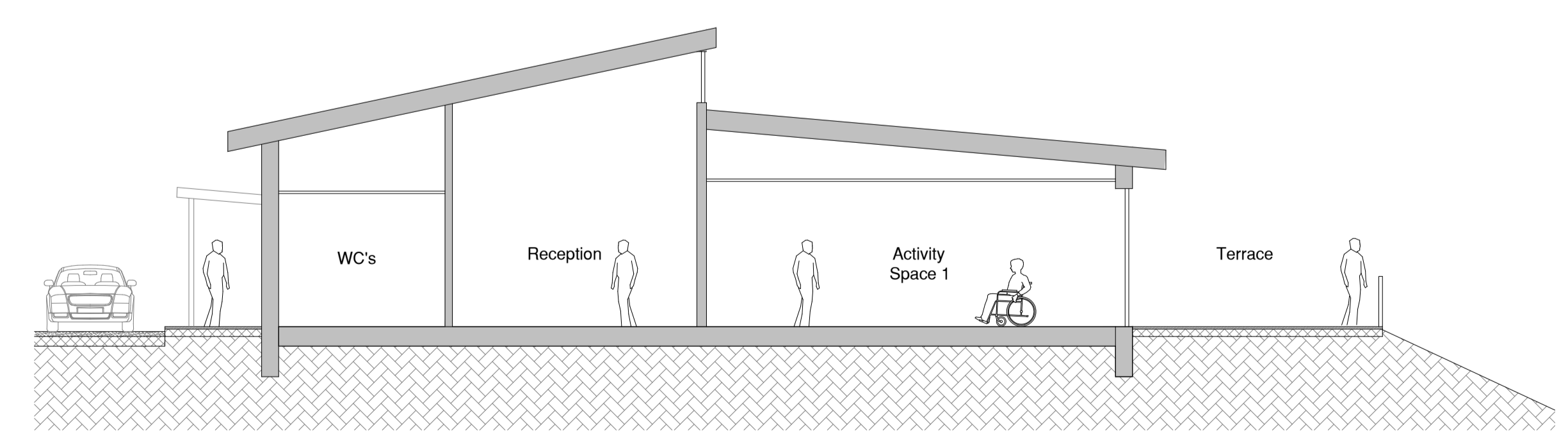
**02 Rear Elevation**  
1:100



**03 Side Elevation**  
1:100



**04 Side Elevation**  
1:100



**05 Section A**  
1:100

P1	First Issue	08/08/23	BST
Rev	Notes	Date	Issued By



SERVICE  
**B.E.S.T**

PROJECT  
**Parkside Sports & Community Centre**

TITLE  
**Elevations**

PROJECT REF	DRAWING REFERENCE	REV
SCALE	DISCIPLINE	SHEET SIZE
PURPOSE OF ISSUE	PLANNING APPROVAL	Drawn Checked