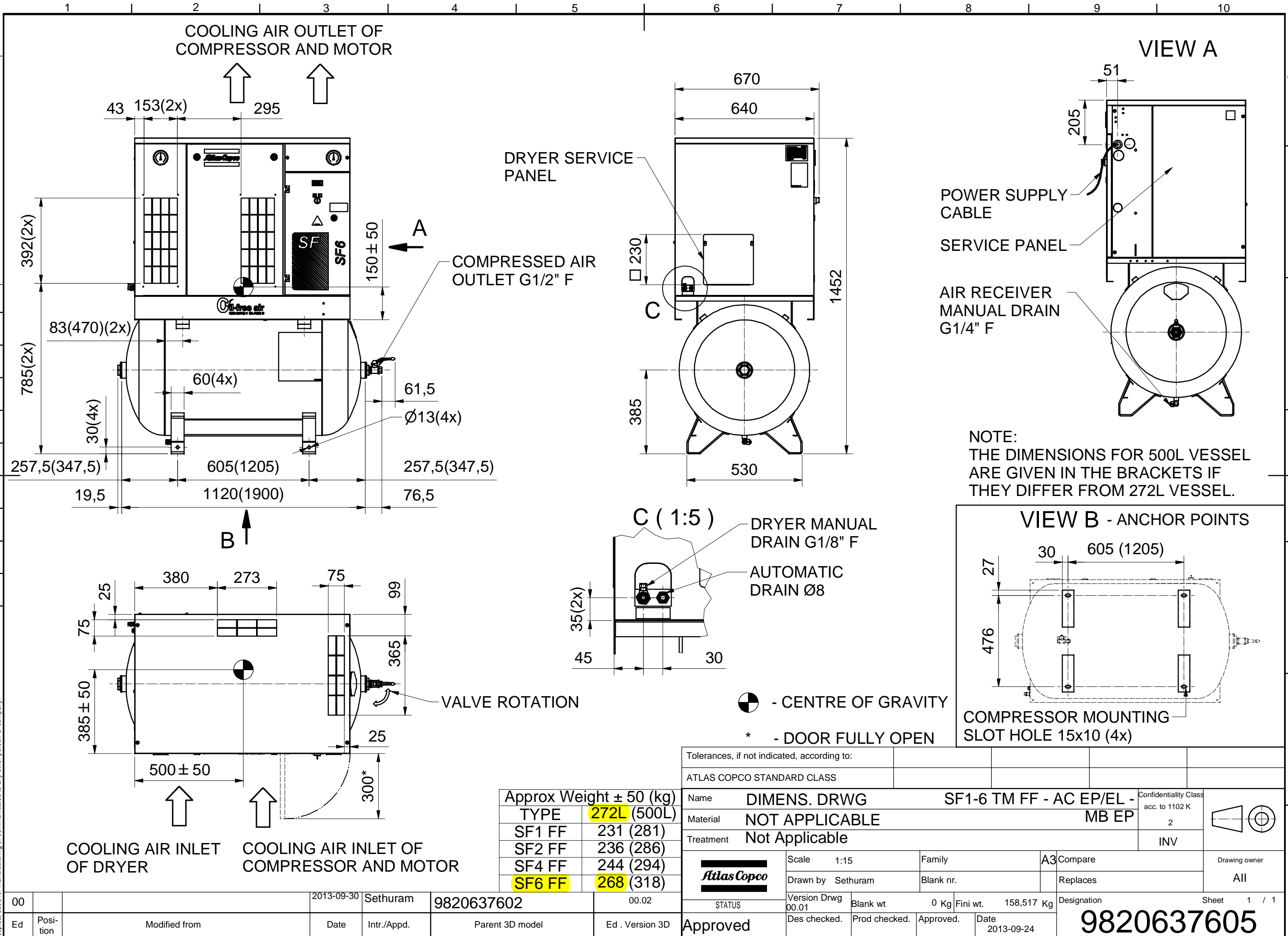


All materials supplied are in compliance with the requirements of the List of Prohibited Substances



CONFIDENTIAL: This document is our property and shall not without our permission be altered, copied, used for manufacturing or communicated to any other person or company.

Approx Weight ± 50 (kg)	
TYPE	272L (500L)
SF1 FF	231 (281)
SF2 FF	236 (286)
SF4 FF	244 (294)
SF6 FF	268 (318)

Tolerances, if not indicated, according to:							
ATLAS COPCO STANDARD CLASS							
Name		DIMENS. DRWG		SF1-6 TM FF - AC EP/EL - MB EP		Confidentiality Class acc. to 1102 K	
Material		NOT APPLICABLE				2	
Treatment		Not Applicable				INV	
Scale		1:15		Family		A3 Compare	
Drawn by		Sethuram		Blank nr.		Replaces	
Version Drwg		00.01		Blank wt.		0 Kg	
Des checked.		Prod checked.		Approved.		Date	
STATUS		Approved		Fini wt.		158,517 Kg	
Ed . Version 3D		00.02		Designation		Sheet 1 / 1	
Parent 3D model		9820637602		Date		2013-09-24	
Ed		00		Date		2013-09-30	
Position		Sethuram		Date		2013-09-30	
Modified from		9820637602		Parent 3D model		Ed . Version 3D	
						9820637605	

A
B
C
D
E
F
G