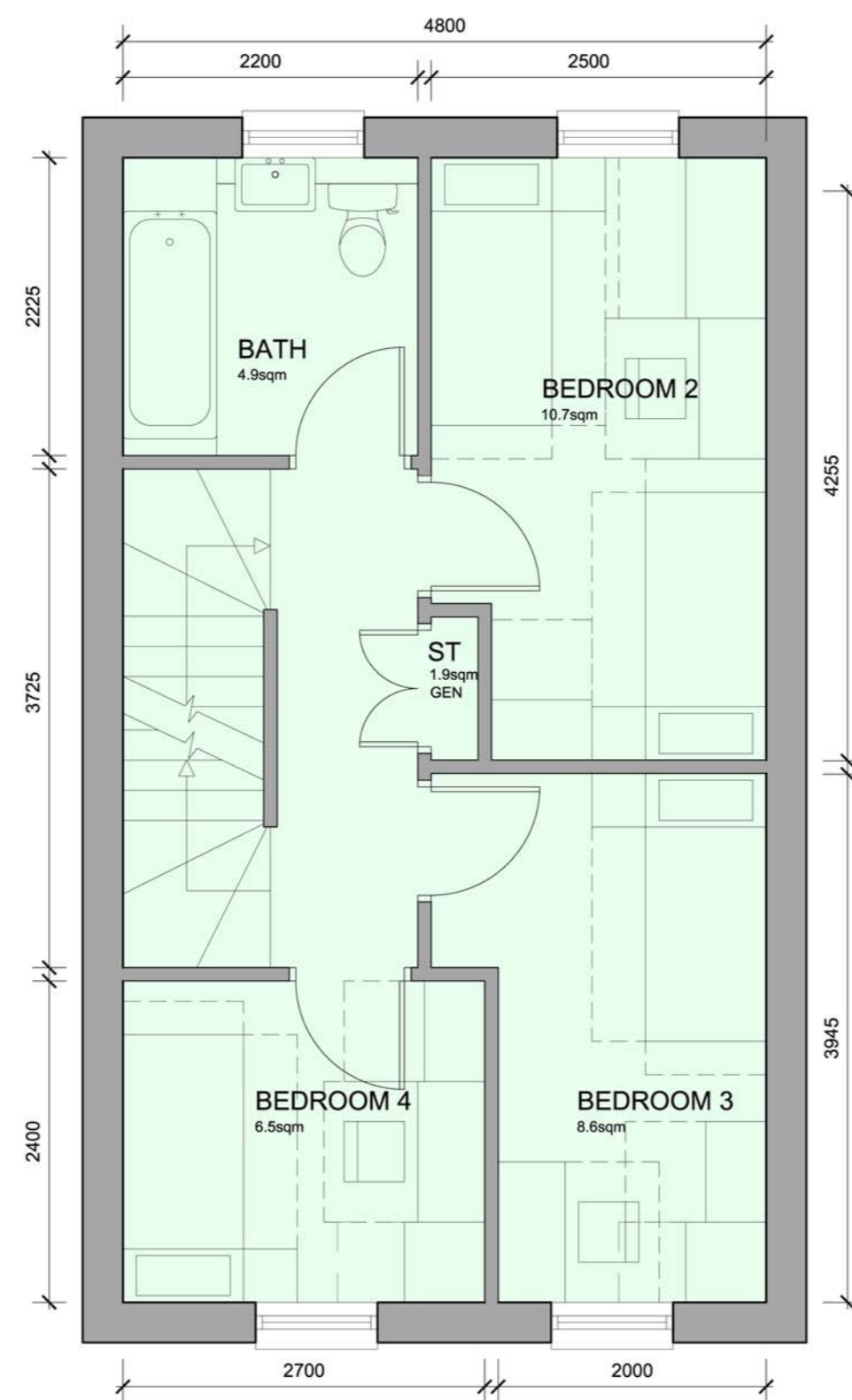
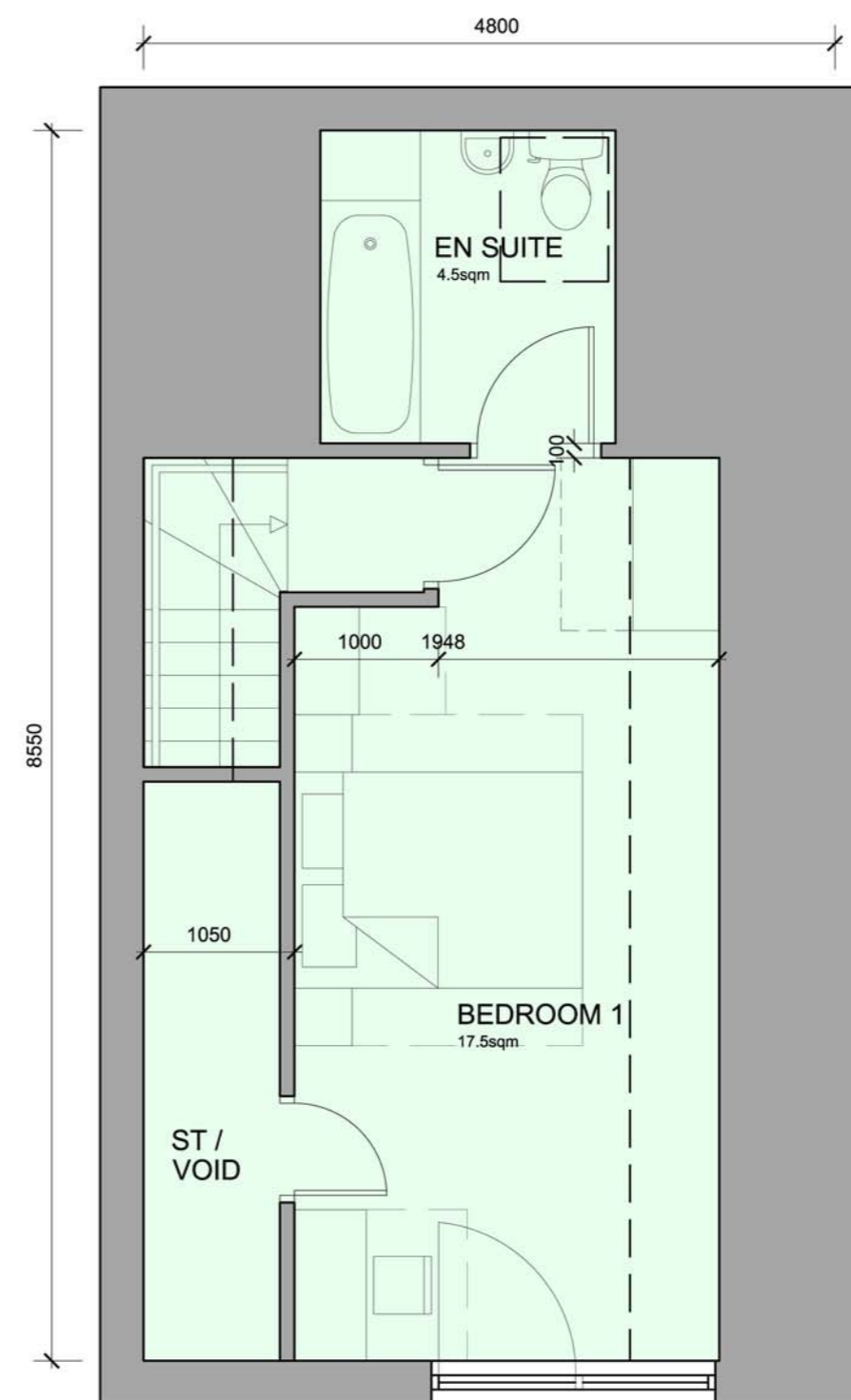


GROUND FLOOR



FIRST FLOOR



SECOND FLOOR (saw-tooth arrangement)
Plot size - 110.7 sqm



Entrance Elevation
Gable to Street Option

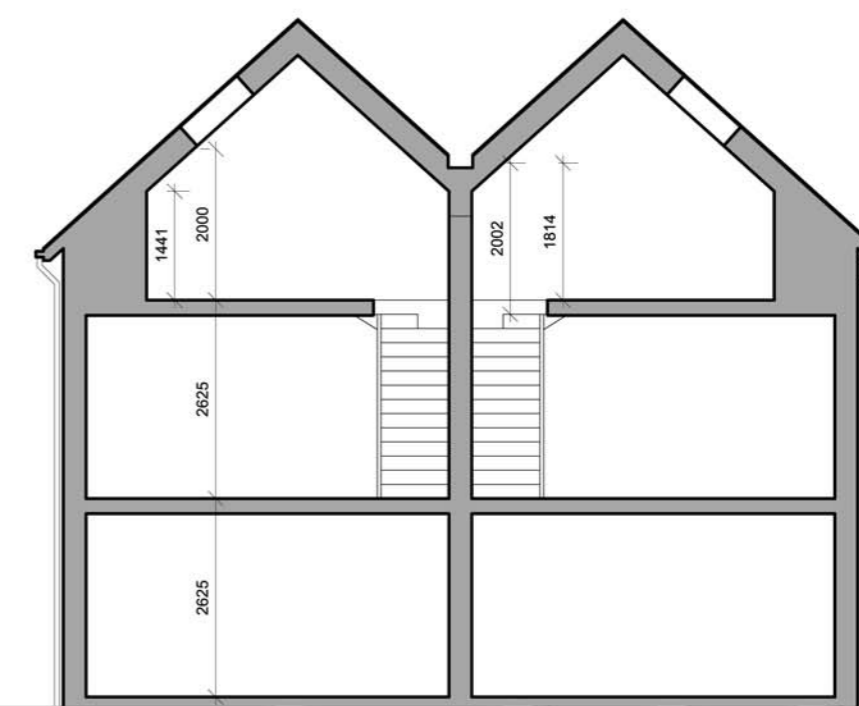
1. F1 Quality facing brickwork
2. Through coloured render system (ie. Sto / Weber or similar approved)
3. 25mm x 125mm horizontal timber PIV boarding on vertical handrail softwood battens. Timber to be heat treated European larchwood from certified managed sustainable forests (ie. Forestal Thermwood or similar approved)
4. Slatted timber framed double glazed windows
5. Interlocking concrete tiled roof
6. Spade course detail
7. Projecting entrance canopy with pressed metal coped/curved edge detail
8. Parapet wall with pressed metal capping slatted over flat roof
9. galvanneal steel balustrade
10. colourcoated pressed metal panel



Rear Elevation



Side Elevation



Rear Elevation

