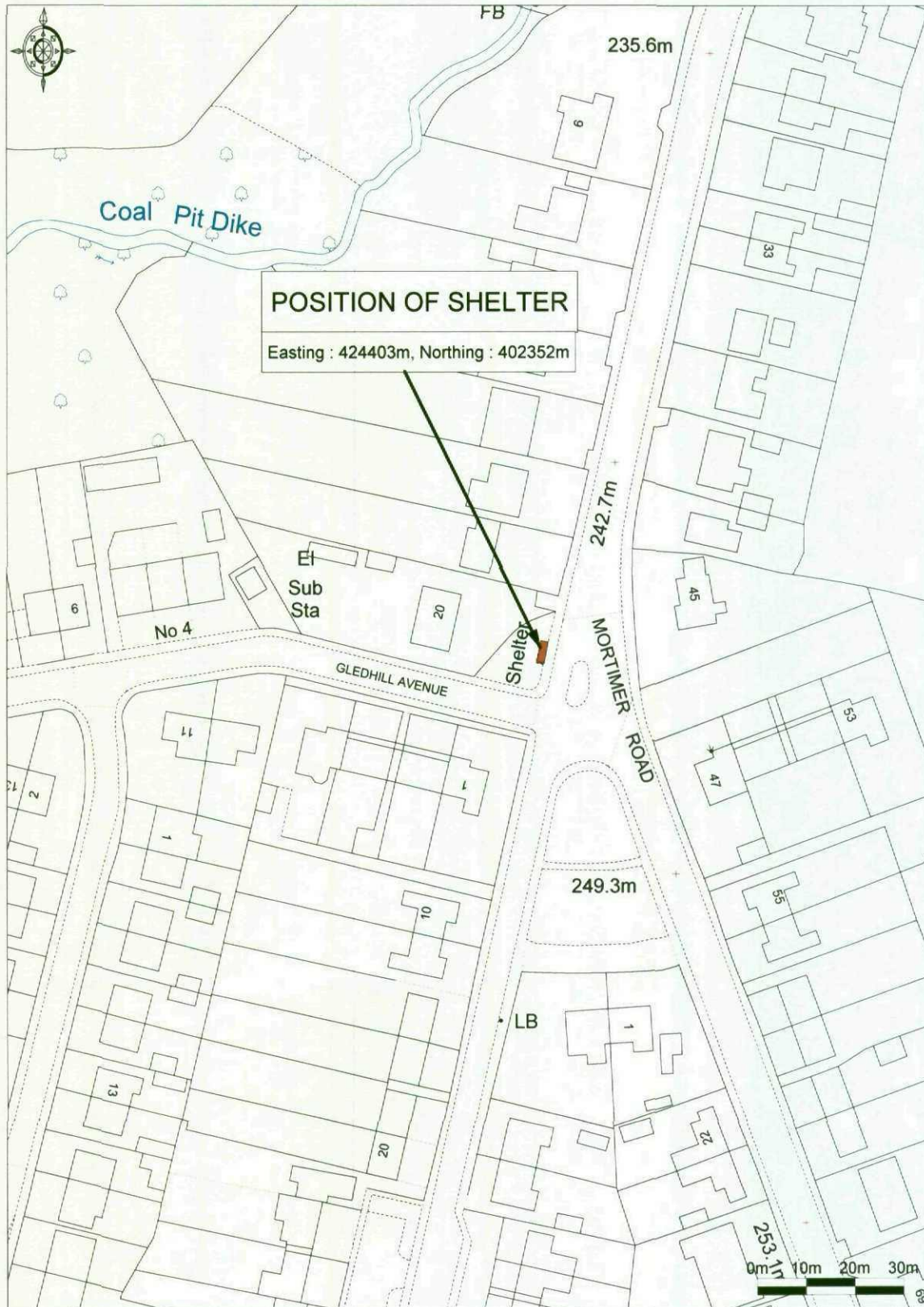


751C102 PENISTONE. MORTIMER ROAD C/O GLEDHILL AVENUE



Enabled by Ordnance Survey

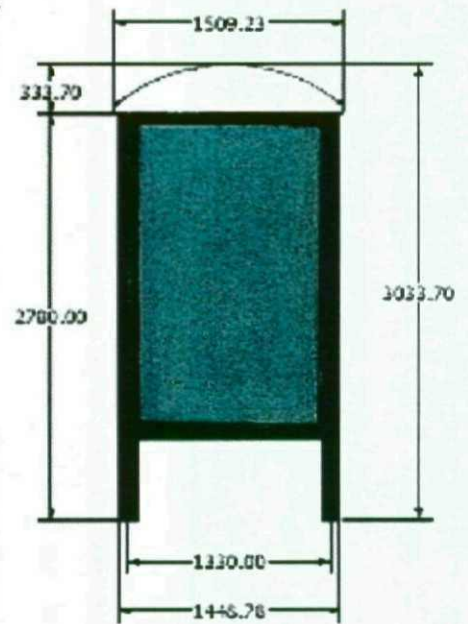
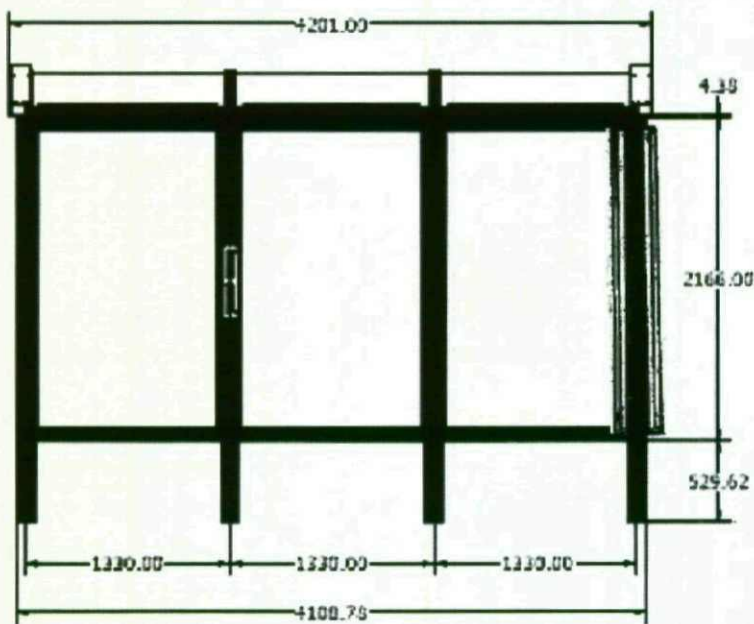
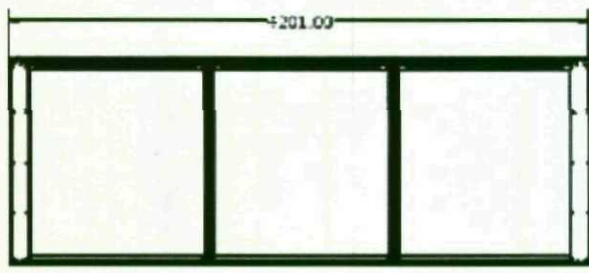
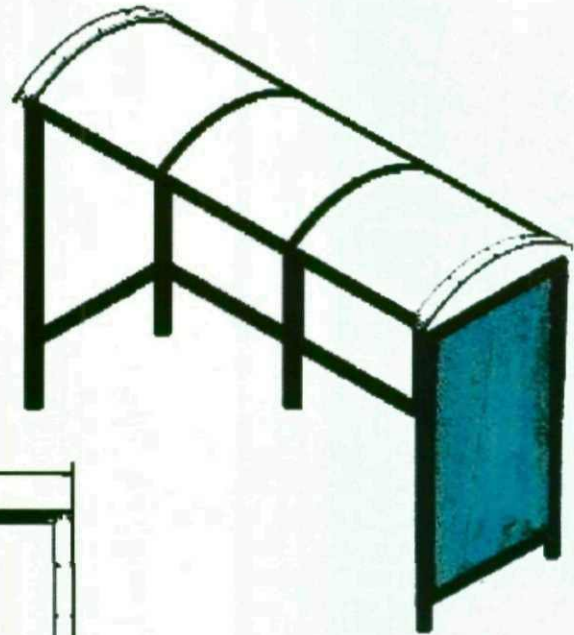
© Crown Copyright 2009. All rights reserved. Licence number 100020449. Plotted Scale - 1:1250

CREATED BY CLEAR CHANNEL



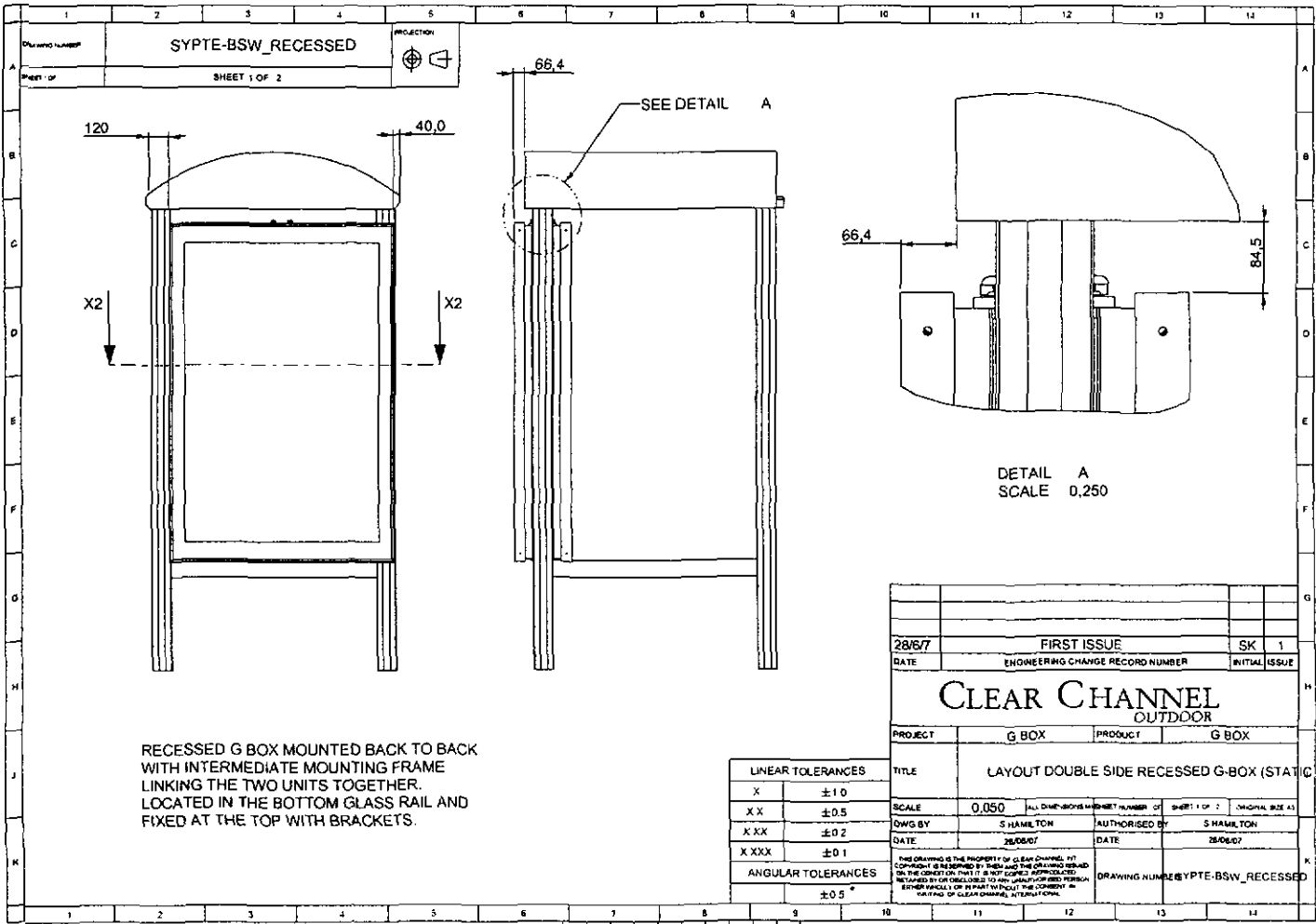
751C102 MORTIMER ROAD C/O GLEDHILL AVENUE

PRINCIPLE 3 BAY SHELTER WITH DOUBLE SIDED ADVERTISING UNIT



**EXAMPLE OF A PRINCIPLE SHELTER WITH
DOUBLE SIDE ADVERTISING UNIT**





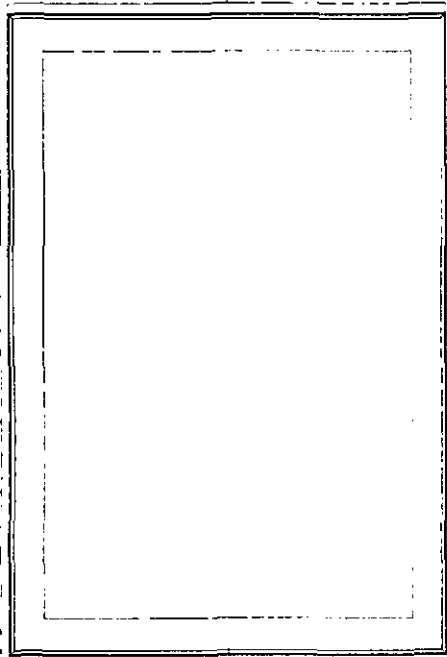
RECESSED G BOX MOUNTED BACK TO BACK WITH INTERMEDIATE MOUNTING FRAME LINKING THE TWO UNITS TOGETHER. LOCATED IN THE BOTTOM GLASS RAIL AND FIXED AT THE TOP WITH BRACKETS.

LINEAR TOLERANCES	
X	± 1.0
XX	± 0.5
XXX	± 0.2
XXXX	± 0.1
ANGULAR TOLERANCES	
	± 0.5 °

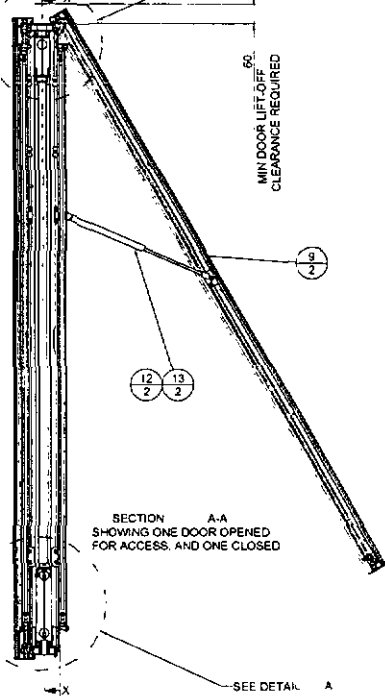
28/6/7	FIRST ISSUE	SK	1
DATE	ENGINEERING CHANGE RECORD NUMBER	INITIAL	ISSUE
CLEAR CHANNEL OUTDOOR			
PROJECT	G BOX	PRODUCT	G BOX
TITLE	LAYOUT DOUBLE SIDE RECESSED G-BOX (STATIC ONLY)		
SCALE	0,050	FULL DIMENSIONS	SHEET NUMBER OF SHEET 1 OF 2 ORIGINAL SIZE A3
DWG BY	S HAMILTON	AUTHORISED BY	S HAMILTON
DATE	28/06/07	DATE	28/06/07
THIS DRAWING IS THE PROPERTY OF CLEAR CHANNEL. NOT TO BE REPRODUCED OR TRANSMITTED IN ANY FORM OR BY ANY MEANS, ELECTRONIC OR MECHANICAL, INCLUDING PHOTOCOPYING, RECORDING, OR BY ANY INFORMATION STORAGE AND RETRIEVAL SYSTEM, WITHOUT THE WRITTEN PERMISSION OF CLEAR CHANNEL, INTERNATIONAL.		DRAWING NUMBER: SYLTE-BSW_RECESSED	

354000

SHEET 1 OF 2



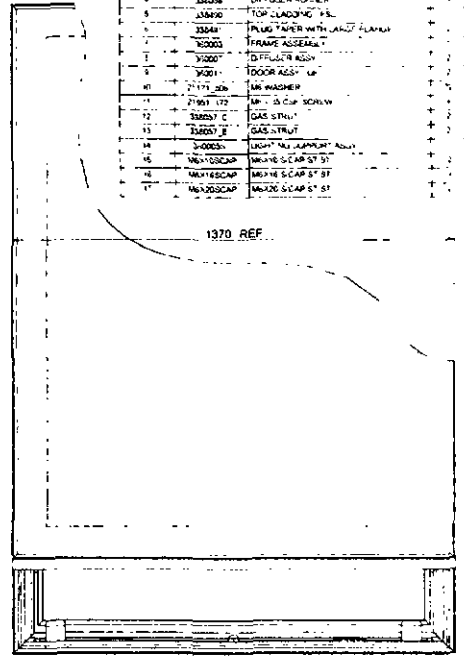
1995 REF.



SECTION A-A
SHOWING ONE DOOR OPENED
FOR ACCESS, AND ONE CLOSED

SEE DETAIL A

SEE DETAIL B



1370 REF.

ITEM NO.	PART NUMBER	DESCRIPTION
1	20075	ALUMINUM JOINT LAMP
2	20212	BOTTOM ZEPHYR BRACKET
3	20633	CLADDING VERTICAL
4	20636	DIFFUSOR NUMBER
5	20640	TOP CLADDING P.S.
6	20642	TOP CLADDING P.S.
7	20644	FRIG TAPER WITH LAMP FLANGE
8	20645	FRIG TAPER WITH LAMP FLANGE
9	20646	FRAME ASSEMBLY
10	20647	FRAME ASSEMBLY
11	20648	FRAME ASSEMBLY
12	20649	FRAME ASSEMBLY
13	20650	FRAME ASSEMBLY
14	20651	FRAME ASSEMBLY
15	20652	FRAME ASSEMBLY
16	20653	FRAME ASSEMBLY
17	20654	FRAME ASSEMBLY
18	20655	FRAME ASSEMBLY
19	20656	FRAME ASSEMBLY
20	20657	FRAME ASSEMBLY
21	20658	FRAME ASSEMBLY
22	20659	FRAME ASSEMBLY
23	20660	FRAME ASSEMBLY
24	20661	FRAME ASSEMBLY
25	20662	FRAME ASSEMBLY
26	20663	FRAME ASSEMBLY
27	20664	FRAME ASSEMBLY
28	20665	FRAME ASSEMBLY
29	20666	FRAME ASSEMBLY
30	20667	FRAME ASSEMBLY
31	20668	FRAME ASSEMBLY
32	20669	FRAME ASSEMBLY
33	20670	FRAME ASSEMBLY
34	20671	FRAME ASSEMBLY
35	20672	FRAME ASSEMBLY
36	20673	FRAME ASSEMBLY
37	20674	FRAME ASSEMBLY
38	20675	FRAME ASSEMBLY
39	20676	FRAME ASSEMBLY
40	20677	FRAME ASSEMBLY
41	20678	FRAME ASSEMBLY
42	20679	FRAME ASSEMBLY
43	20680	FRAME ASSEMBLY
44	20681	FRAME ASSEMBLY
45	20682	FRAME ASSEMBLY
46	20683	FRAME ASSEMBLY
47	20684	FRAME ASSEMBLY
48	20685	FRAME ASSEMBLY
49	20686	FRAME ASSEMBLY
50	20687	FRAME ASSEMBLY
51	20688	FRAME ASSEMBLY
52	20689	FRAME ASSEMBLY
53	20690	FRAME ASSEMBLY
54	20691	FRAME ASSEMBLY
55	20692	FRAME ASSEMBLY
56	20693	FRAME ASSEMBLY
57	20694	FRAME ASSEMBLY
58	20695	FRAME ASSEMBLY
59	20696	FRAME ASSEMBLY
60	20697	FRAME ASSEMBLY
61	20698	FRAME ASSEMBLY
62	20699	FRAME ASSEMBLY
63	20700	FRAME ASSEMBLY
64	20701	FRAME ASSEMBLY
65	20702	FRAME ASSEMBLY
66	20703	FRAME ASSEMBLY
67	20704	FRAME ASSEMBLY
68	20705	FRAME ASSEMBLY
69	20706	FRAME ASSEMBLY
70	20707	FRAME ASSEMBLY
71	20708	FRAME ASSEMBLY
72	20709	FRAME ASSEMBLY
73	20710	FRAME ASSEMBLY
74	20711	FRAME ASSEMBLY
75	20712	FRAME ASSEMBLY
76	20713	FRAME ASSEMBLY
77	20714	FRAME ASSEMBLY
78	20715	FRAME ASSEMBLY
79	20716	FRAME ASSEMBLY
80	20717	FRAME ASSEMBLY
81	20718	FRAME ASSEMBLY
82	20719	FRAME ASSEMBLY
83	20720	FRAME ASSEMBLY
84	20721	FRAME ASSEMBLY
85	20722	FRAME ASSEMBLY
86	20723	FRAME ASSEMBLY
87	20724	FRAME ASSEMBLY
88	20725	FRAME ASSEMBLY
89	20726	FRAME ASSEMBLY
90	20727	FRAME ASSEMBLY
91	20728	FRAME ASSEMBLY
92	20729	FRAME ASSEMBLY
93	20730	FRAME ASSEMBLY
94	20731	FRAME ASSEMBLY
95	20732	FRAME ASSEMBLY
96	20733	FRAME ASSEMBLY
97	20734	FRAME ASSEMBLY
98	20735	FRAME ASSEMBLY
99	20736	FRAME ASSEMBLY
100	20737	FRAME ASSEMBLY

1025 REF.

NOTE

- 1 ALL FIXINGS AND FASTENERS TO BE STAINLESS STEEL
- 2 MASS 149 Kg APPROX

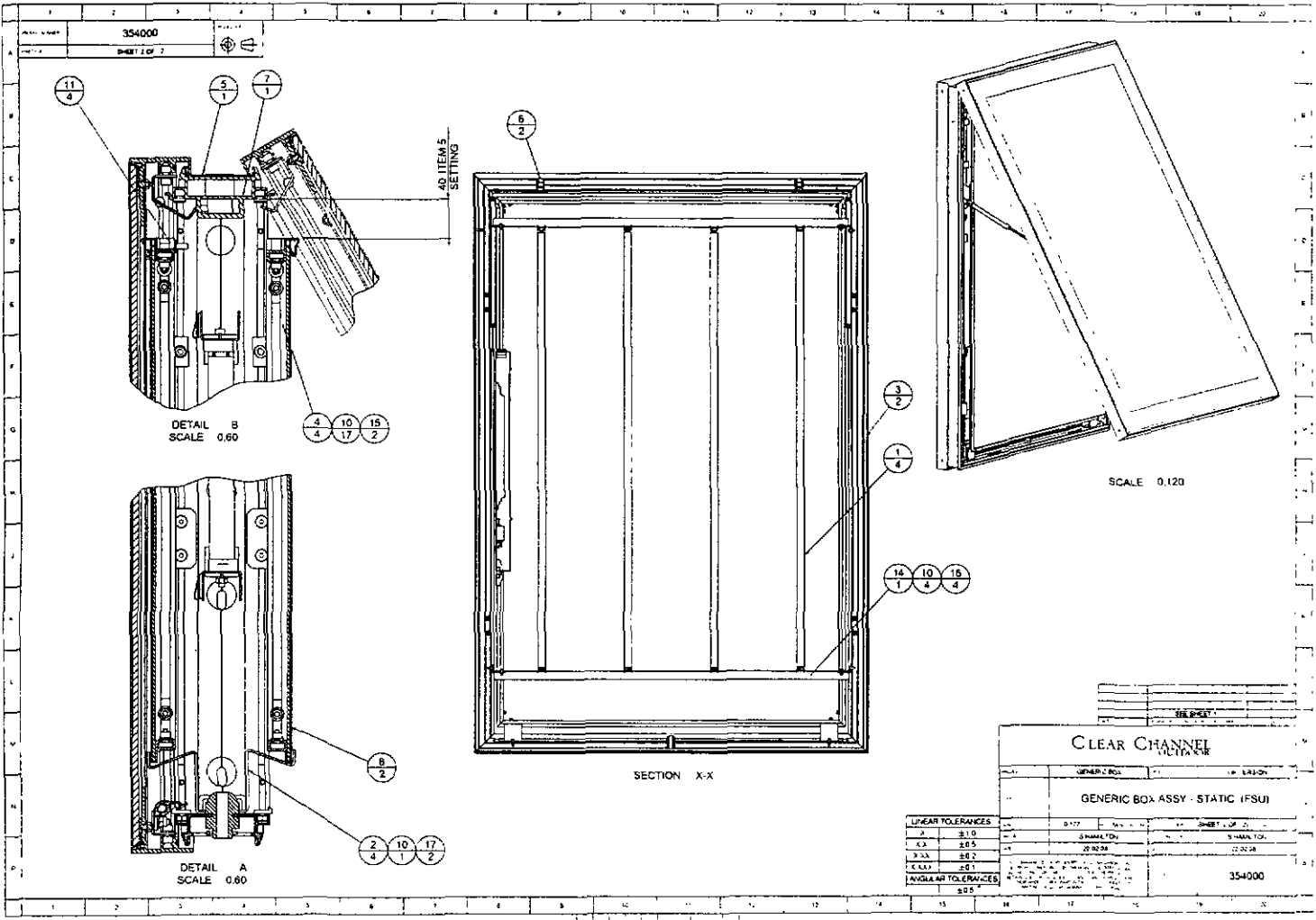
CLEAR CHANNEL

GENERIC BOX ASSY STATIC (FSU)

UNCLAMP CLEARANCE	CLAMP CLEARANCE
2.0	2.0
2.1	2.1
2.2	2.2
2.3	2.3
2.4	2.4
2.5	2.5
2.6	2.6
2.7	2.7
2.8	2.8
2.9	2.9
3.0	3.0

ITEM NO.	DESCRIPTION	QTY	UNIT
1
2
3
4
5
6
7
8
9
10
11
12
13
14
15
16
17
18
19
20
21
22
23
24
25
26
27
28
29
30
31
32
33
34
35
36
37
38
39
40
41
42
43
44
45
46
47
48
49
50
51
52
53
54
55
56
57
58
59
60
61
62
63
64
65
66
67
68
69
70
71
72
73
74
75
76
77
78
79
80
81
82
83
84
85
86
87
88
89
90
91
92
93
94
95
96
97
98
99
100

354000



CLEAR CHANNEL CHANNEL			
GENERIC BOX	GENERIC BOX	GENERIC BOX	GENERIC BOX
GENERIC BOX ASSY - STATIC (FSU)			
LINEAR TOLERANCES	±0.10	±0.15	±0.20
2	±0.10	±0.15	±0.20
3	±0.15	±0.20	±0.25
4	±0.20	±0.25	±0.30
5	±0.25	±0.30	±0.35
6	±0.30	±0.35	±0.40
7	±0.35	±0.40	±0.45
8	±0.40	±0.45	±0.50
9	±0.45	±0.50	±0.55
10	±0.50	±0.55	±0.60
11	±0.55	±0.60	±0.65
12	±0.60	±0.65	±0.70
13	±0.65	±0.70	±0.75
14	±0.70	±0.75	±0.80
15	±0.75	±0.80	±0.85
16	±0.80	±0.85	±0.90
17	±0.85	±0.90	±0.95
18	±0.90	±0.95	±1.00
19	±0.95	±1.00	±1.05
20	±1.00	±1.05	±1.10
21	±1.05	±1.10	±1.15
22	±1.10	±1.15	±1.20
23	±1.15	±1.20	±1.25
24	±1.20	±1.25	±1.30
25	±1.25	±1.30	±1.35
26	±1.30	±1.35	±1.40
27	±1.35	±1.40	±1.45
28	±1.40	±1.45	±1.50
29	±1.45	±1.50	±1.55
30	±1.50	±1.55	±1.60
31	±1.55	±1.60	±1.65
32	±1.60	±1.65	±1.70
33	±1.65	±1.70	±1.75
34	±1.70	±1.75	±1.80
35	±1.75	±1.80	±1.85
36	±1.80	±1.85	±1.90
37	±1.85	±1.90	±1.95
38	±1.90	±1.95	±2.00
39	±1.95	±2.00	±2.05
40	±2.00	±2.05	±2.10
41	±2.05	±2.10	±2.15
42	±2.10	±2.15	±2.20
43	±2.15	±2.20	±2.25
44	±2.20	±2.25	±2.30
45	±2.25	±2.30	±2.35
46	±2.30	±2.35	±2.40
47	±2.35	±2.40	±2.45
48	±2.40	±2.45	±2.50
49	±2.45	±2.50	±2.55
50	±2.50	±2.55	±2.60
51	±2.55	±2.60	±2.65
52	±2.60	±2.65	±2.70
53	±2.65	±2.70	±2.75
54	±2.70	±2.75	±2.80
55	±2.75	±2.80	±2.85
56	±2.80	±2.85	±2.90
57	±2.85	±2.90	±2.95
58	±2.90	±2.95	±3.00
59	±2.95	±3.00	±3.05
60	±3.00	±3.05	±3.10
61	±3.05	±3.10	±3.15
62	±3.10	±3.15	±3.20
63	±3.15	±3.20	±3.25
64	±3.20	±3.25	±3.30
65	±3.25	±3.30	±3.35
66	±3.30	±3.35	±3.40
67	±3.35	±3.40	±3.45
68	±3.40	±3.45	±3.50
69	±3.45	±3.50	±3.55
70	±3.50	±3.55	±3.60
71	±3.55	±3.60	±3.65
72	±3.60	±3.65	±3.70
73	±3.65	±3.70	±3.75
74	±3.70	±3.75	±3.80
75	±3.75	±3.80	±3.85
76	±3.80	±3.85	±3.90
77	±3.85	±3.90	±3.95
78	±3.90	±3.95	±4.00
79	±3.95	±4.00	±4.05
80	±4.00	±4.05	±4.10
81	±4.05	±4.10	±4.15
82	±4.10	±4.15	±4.20
83	±4.15	±4.20	±4.25
84	±4.20	±4.25	±4.30
85	±4.25	±4.30	±4.35
86	±4.30	±4.35	±4.40
87	±4.35	±4.40	±4.45
88	±4.40	±4.45	±4.50
89	±4.45	±4.50	±4.55
90	±4.50	±4.55	±4.60
91	±4.55	±4.60	±4.65
92	±4.60	±4.65	±4.70
93	±4.65	±4.70	±4.75
94	±4.70	±4.75	±4.80
95	±4.75	±4.80	±4.85
96	±4.80	±4.85	±4.90
97	±4.85	±4.90	±4.95
98	±4.90	±4.95	±5.00
99	±4.95	±5.00	±5.05
100	±5.00	±5.05	±5.10