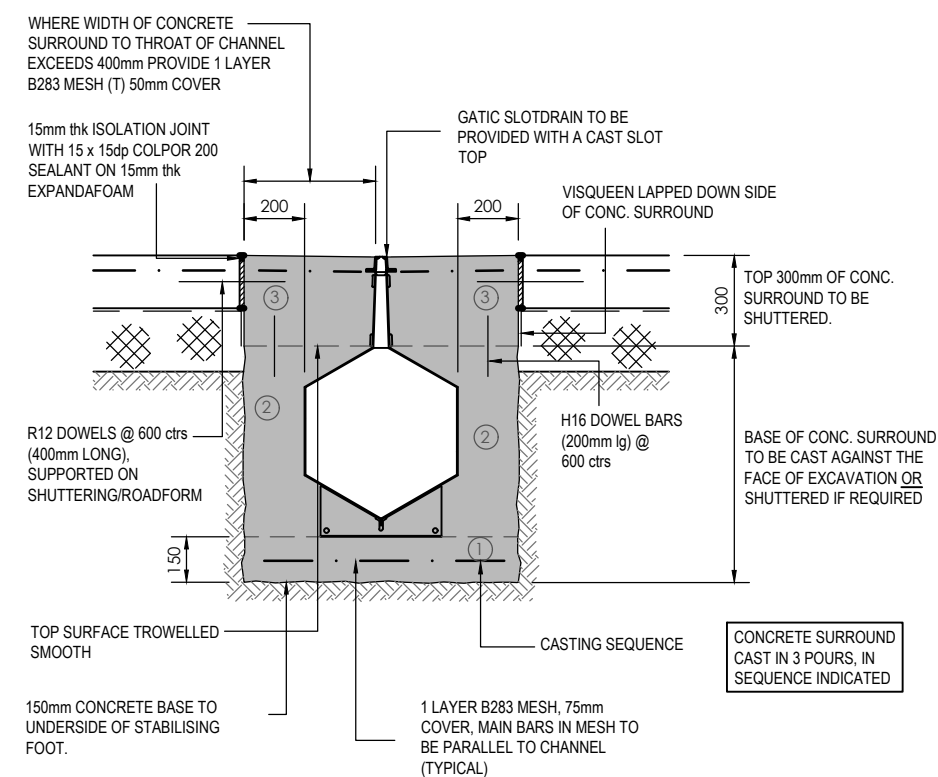
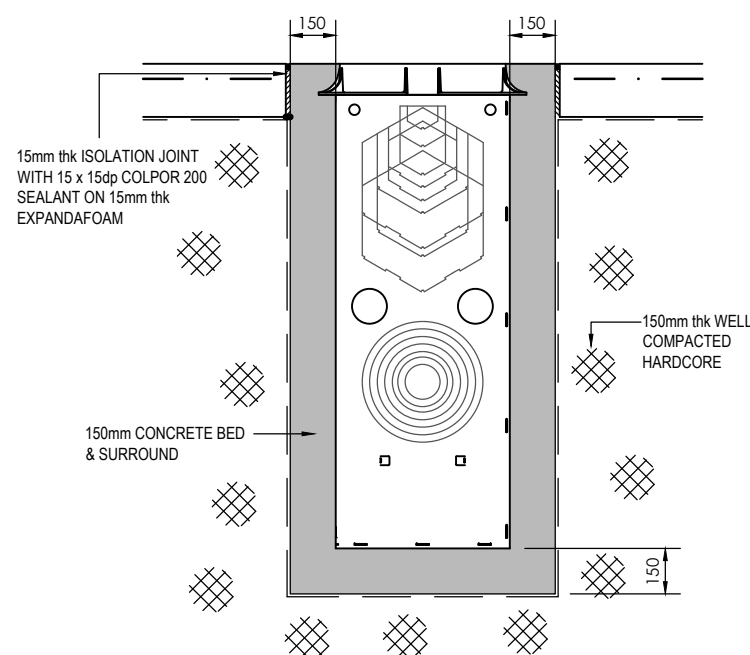
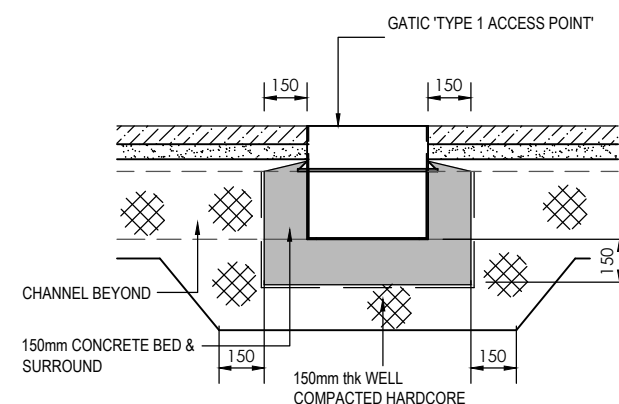
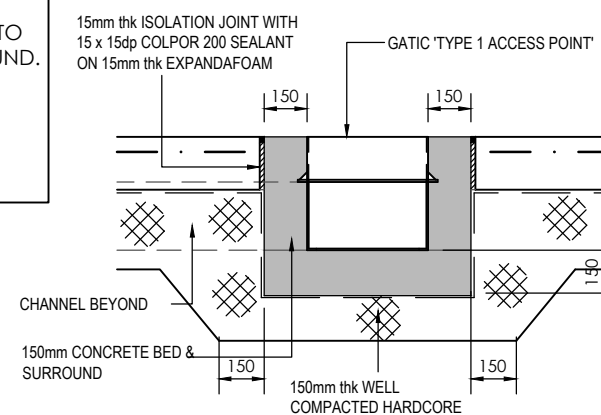


SECTION THRO' GATIC 'CASTSLOT' CHANNEL
(WITHIN TARMAC AREAS)



NOTE:
PROVIDE 3mm thk EXTERNAL QUALITY PLYWOOD TO PROVIDE FULL DEPTH JOINT IN CONCRETE SURROUND.
JOINT CENTRES TO BE AS FOLLOWS:
AT SLAB JOINT POSITIONS AND MID-LENGTH IN LONGITUDINAL JOINT DIRECTION,
AT SLAB JOINT POSITIONS IN CONTRACTION JOINT DIRECTION.



05.07.23	GATIC DETAIL ADJACENT BUILDING ADDED	RB	RPB	2
05.06.23	FIRST ISSUE	SA	RPB	1
Date	Revisions	Drawn	Checked	Rev

Dwg Status	PRELIMINARY
------------	-------------

NORTH EAST
0191 2585632



YORKSHIRE
0113 5323500

CONSULTING ENGINEERS

WWW.RWO.GROUP
INFO@RWO.GROUP

Client **CARNELL MANAGEMENT SERVICES LIMITED**

Project
ROCKINGHAM BIRDWELL

Title

GATIC CHANNEL DETAILS

DO NOT SCALE	Scale @ A3:	Drawn SA	Checked RPB	Date 05/06/2023
Job No Y22018		Dwg No D701		Rev 2