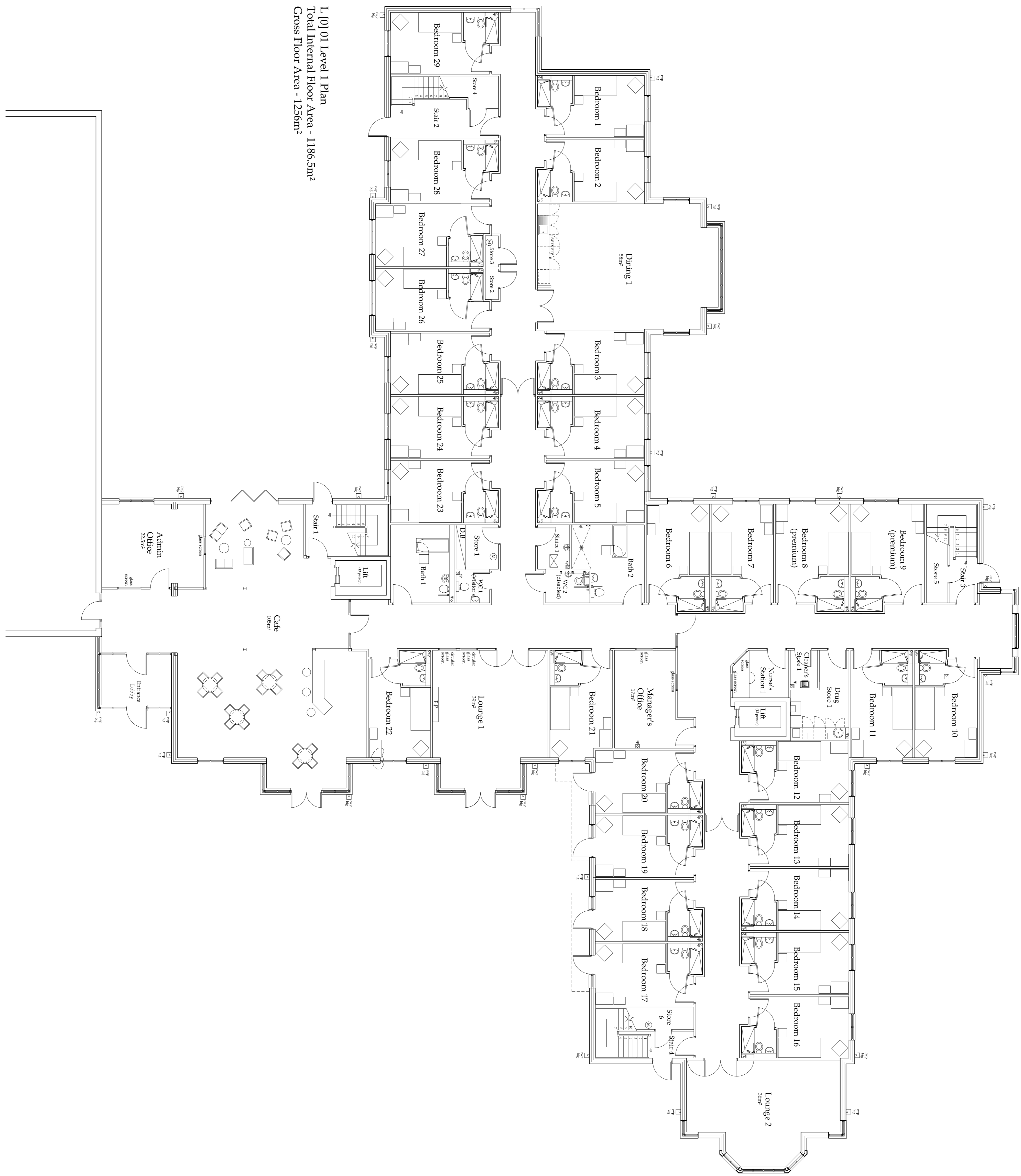


Accommodation Schedule

- Lounge 1 - 39m²
- Lounge 2 - 36m²
- Dining 1 - 58m²
- Total Lounge / Dining area - 133m²
- Cafe - 105m²
- 29 Single Bedrooms with Ensuites
- Manager's Office
- Admin Office
- 2 Lifts (2 x 13 person)
- 2 Bathrooms
- 1 Disabled WC
- 1 Visitor's WC
- 1 Drug Store
- 1 Sluice
- Nurse's Station
- Cleaner's Store
- Stores

Key

- rwp Rain water pipe
- big Back inlet gully
- wp Waste pipe
- (M) Manifold positions
- DB Distribution board
- F.P Fire place



L [0] 01 Level 1 Plan
 Total Internal Floor Area - 1186.5m²
 Gross Floor Area - 1256m²

Revision	Description	Date
D	Draw to Dining Room 1 replaced with windows, Manager's Office reduced & Bedroom 22 added as shown, Bedroom 22 added as shown, Other minor amendments.	22.10.12
C	Amendments to window positions, minor amendments	06.10.11
B	Internal layout changes following meeting with the client including reorganisation of bedroom layout and adjustment of openings to suit.	24.08.11
A	Internal layout changes	10.08.11

Do not scale from this drawing.
 Any errors, omissions and discrepancies to be reported to the Architects as soon as they are discovered and instruction sought before proceeding.

Drawing Status: Planning

Proposed Care Home,
 Mapplewell, Barnsley

ALISTON MURPHY
 ARCHITECTS

General Arrangement
 Level 1 Plan

Scale: 1:100 @ A1 Date: July '11
 Drawn: 12/00 @ A3
 Date: 15/08/11
 1535 L [0] 01