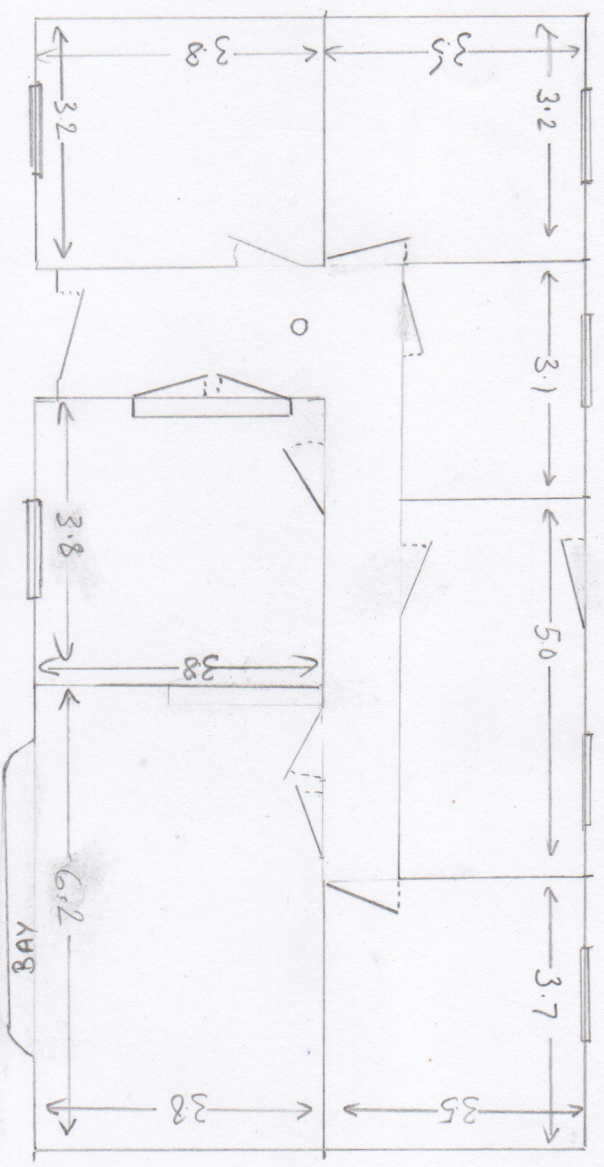


↑ WATERFIELD PLACE

REAR



FRONT OF PROPERTY

APPLICATION No 2012/0877/Change of Use
 C2 to C3

LOCATION: 14 WATERFIELD PLACE, STAIRFOOT
 S703PZ

— WINDOW

1:100 Scale (1 metre = 1 cm)

○ FIRE ALARM

All internal doors have been changed from half hour fire doors to normal residential internal doors.

Emergency lighting is no longer in use

IT CAN BE SEEN THAT THE INTERNAL LAYOUT OF THE PROPERTY IS NOT ALTERED AND THAT IT IS THE SAME LAYOUT AS IN 1990 WHEN THE PROPERTY WAS BUILT, I ENCLOSE THE APPROVED LAYOUT OF 2006 TO SHOW THAT NO CHANGES STRUCTURALLY HAVE BEEN PROPOSED, JUST A CHANGE OF USE

