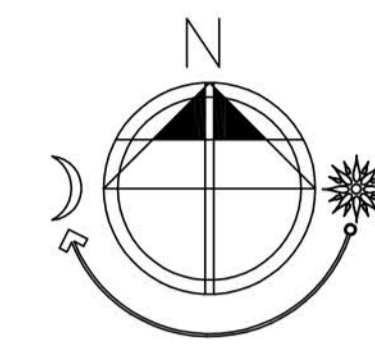
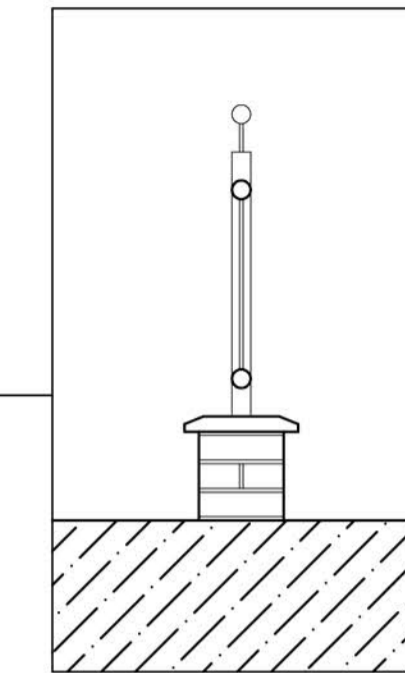


Rev	Date	Description	Drawn
A	04/11/20	Public area amended	HKM



Low level York stone wall with coping stone and decorative black railings on top.



Detail 1:20 @A1



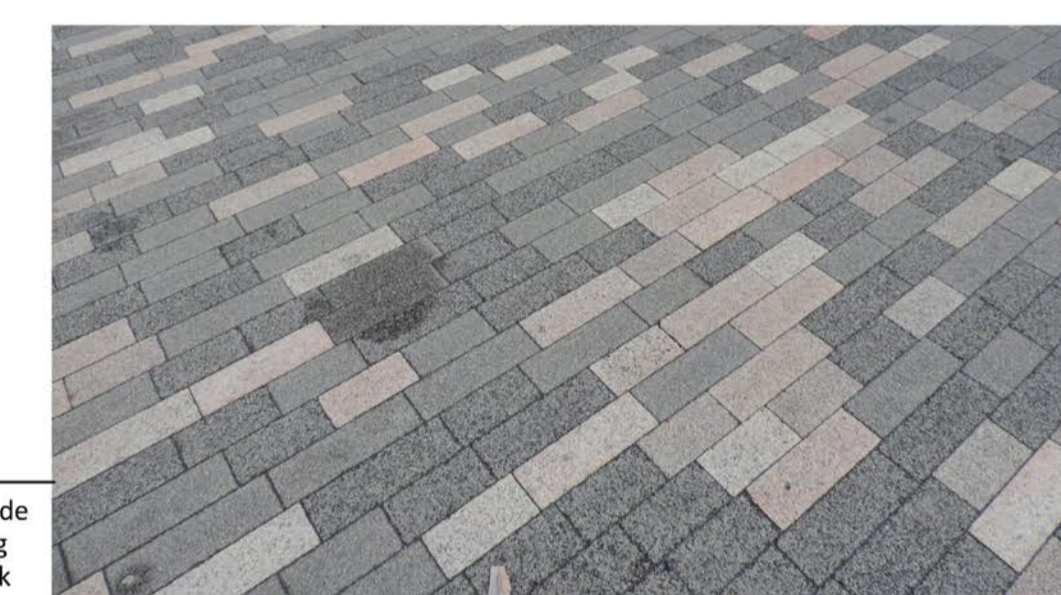
Benches made from continuation of low-level York stone wall with coping stone and timber slat seating.



Benches made from continuation of low-level York stone wall with coping stone and timber slat seating.

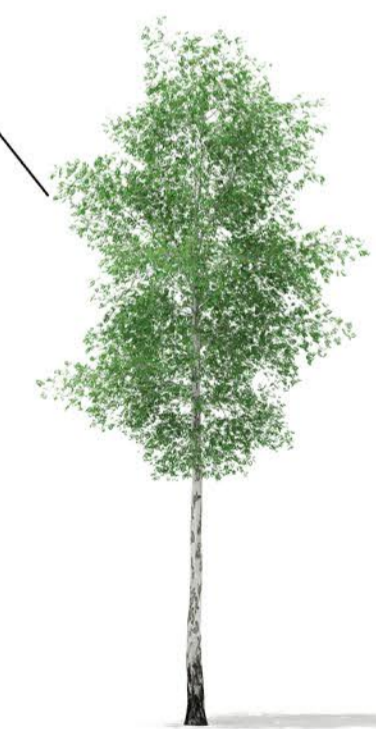
Low level York stone wall with coping stone and decorative black railings on top.

Car park surface to be tarmac



Hard landscaping to be level with tarmac and made from grey and buff paving stones in a stretched brick bond pattern.

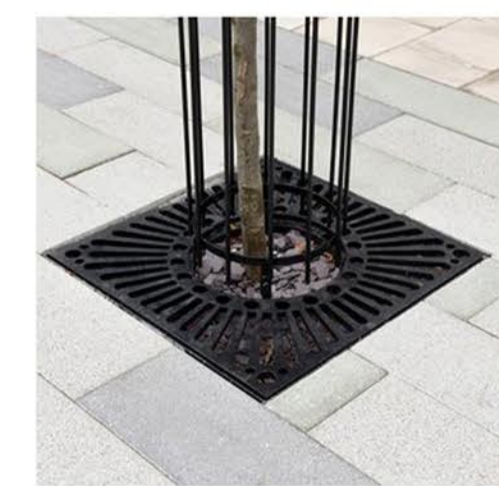
Silver birch trees sat in a metal grill with protective wire surround



Betula pendula (Silver Birch)



York Stone on building opposite to be used to match stone on new wall.



Grating for trees



SENSUS
www.sensusarchitecture.co.uk
tel. 01485 211224
email: info@sensusarchitecture.co.uk

Client: Northumberland Trading LTD
Project: Barnsley
Drawing: Proposed Parking Layout

Drawn: HKM / MAS
Date: October 2020
Scale: 1:200 @A1
Drawing No: 20001-003-01
Rev: A