





**Key**

	New Channel
	Seasonal areas of inundation
	Areas to be filled for level 9m maintenance access
	Flood embankment
	Channels to be filled
	Wet Grassland
	General Flow Direction
	Post and wire fence
	Existing Channel

Rev	Modifications	Date	Drawn	Designed	Checked	Approved

**JBA**  
consulting

www.jbaconsulting.com  
 1 +44 (0)1624 685100  
 1 +44 (0)1624 685101  
 info@jbaconsulting.com

Offices at: **Cardiff, Exeter, Edinburgh, Epsom, Gloucester, Harrogate, Heath, Limerick, Newcastle upon Tyne, Oxford, Newport, Solihull, Stevenage, Telford, Walsley, Weymouth, Wymondley**

for

**The Garganey Trust**  
**Wombwell Wetlands Extension Scheme**  
**Wings Across The Ings**  
**Part General Arrangement**

This document is the property of Wombwell Wetlands Extension Scheme Ltd. It shall not be reproduced in whole or in part, nor disclosed to a third party, without the permission of Wombwell Wetlands Extension Scheme Ltd.

Scale: 1:200 @ A1

Digital File Name: 2016s385b-WTD4-1-Inset Plan 1

Drawing Number: 2016s385b-WTD4

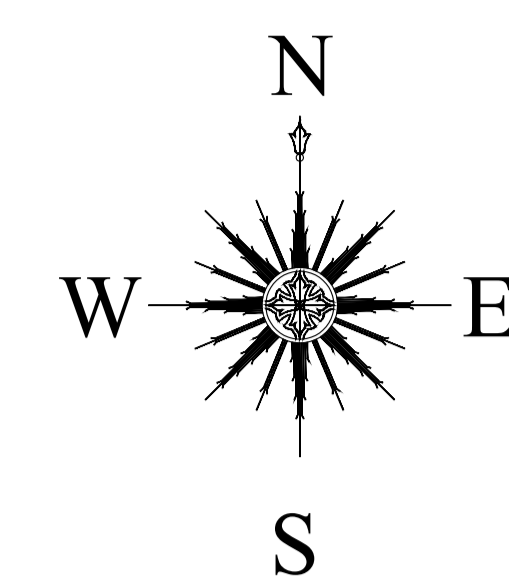
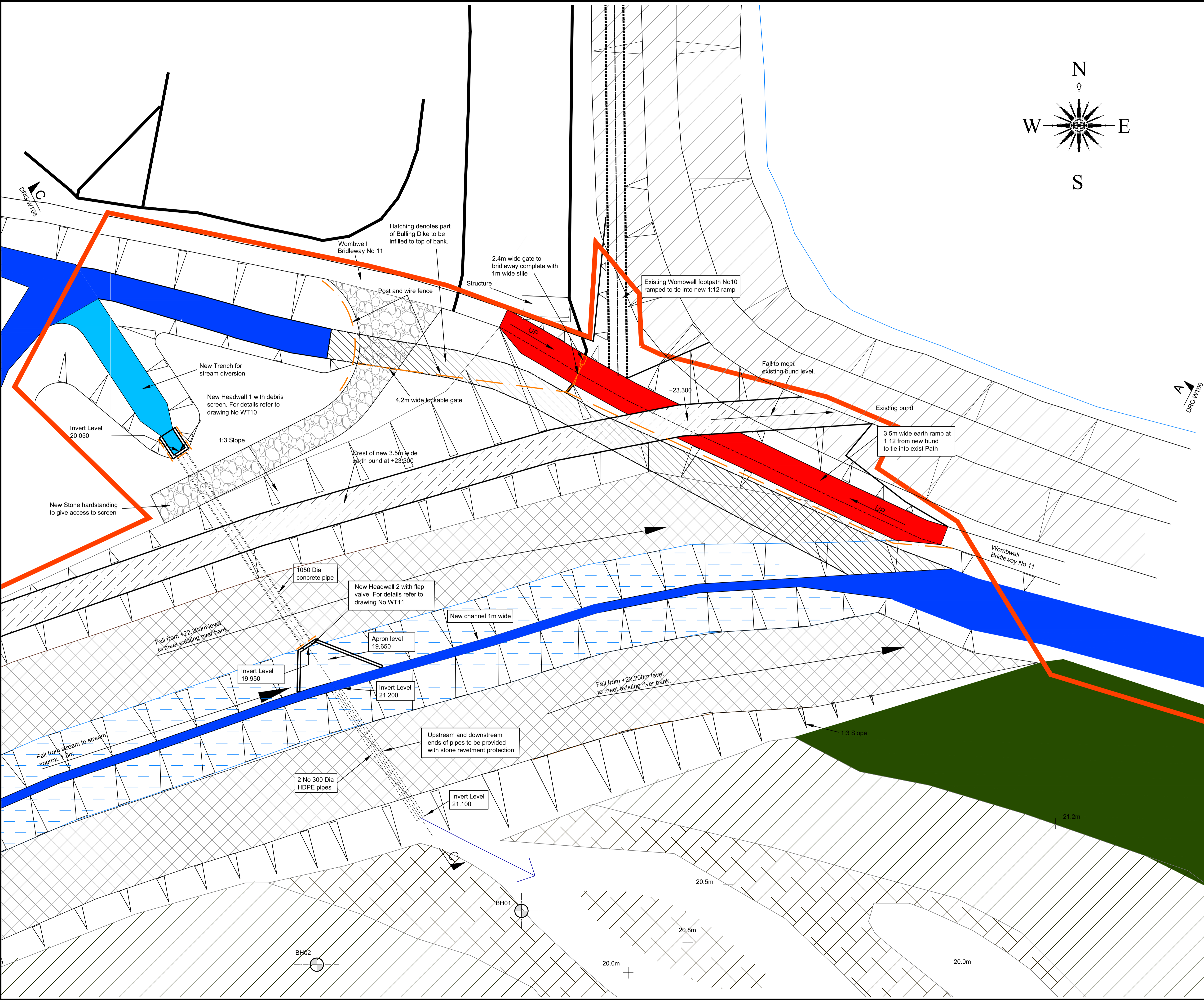
Rev.: 1

Sheet No.: 1 of 1

Status: For Issue

Drawn: P. Forrest  
 Designed: N. Hourigan  
 Checked: A. Craven  
 Approved: A. Jones

Aug 2017  
 Aug 2017  
 Sept 2017  
 Sept 2017



**General Notes**

**Key**

- New Channel
- Seasonal areas of inundation
- Reed dominated area
- Areas to be filled for level 9m maintenance access
- Flood embankment
- Wet Grassland
- General Flow Direction
- Post and wire fence

Rev	Modifications	Date	Drawn	Designed	Checked	Approved

**JBA consulting**

Second Avenue  
ONCHAN  
Isle of Man  
IM3 4LT  
British Isles

www.jbaconsulting.com  
t +44 (0)1624 695100  
f +44 (0)1624 620386  
e info@jbaconsulting.com

for

## The Garganey Trust Wombwell Wetlands Extension Scheme Wings Across The Ings

Inset Plan 2

This document is the property of Jeremy Benn Associates Ltd. It shall not be reproduced in whole or in part, nor disclosed to a third party, without the permission of Jeremy Benn Associates Ltd.

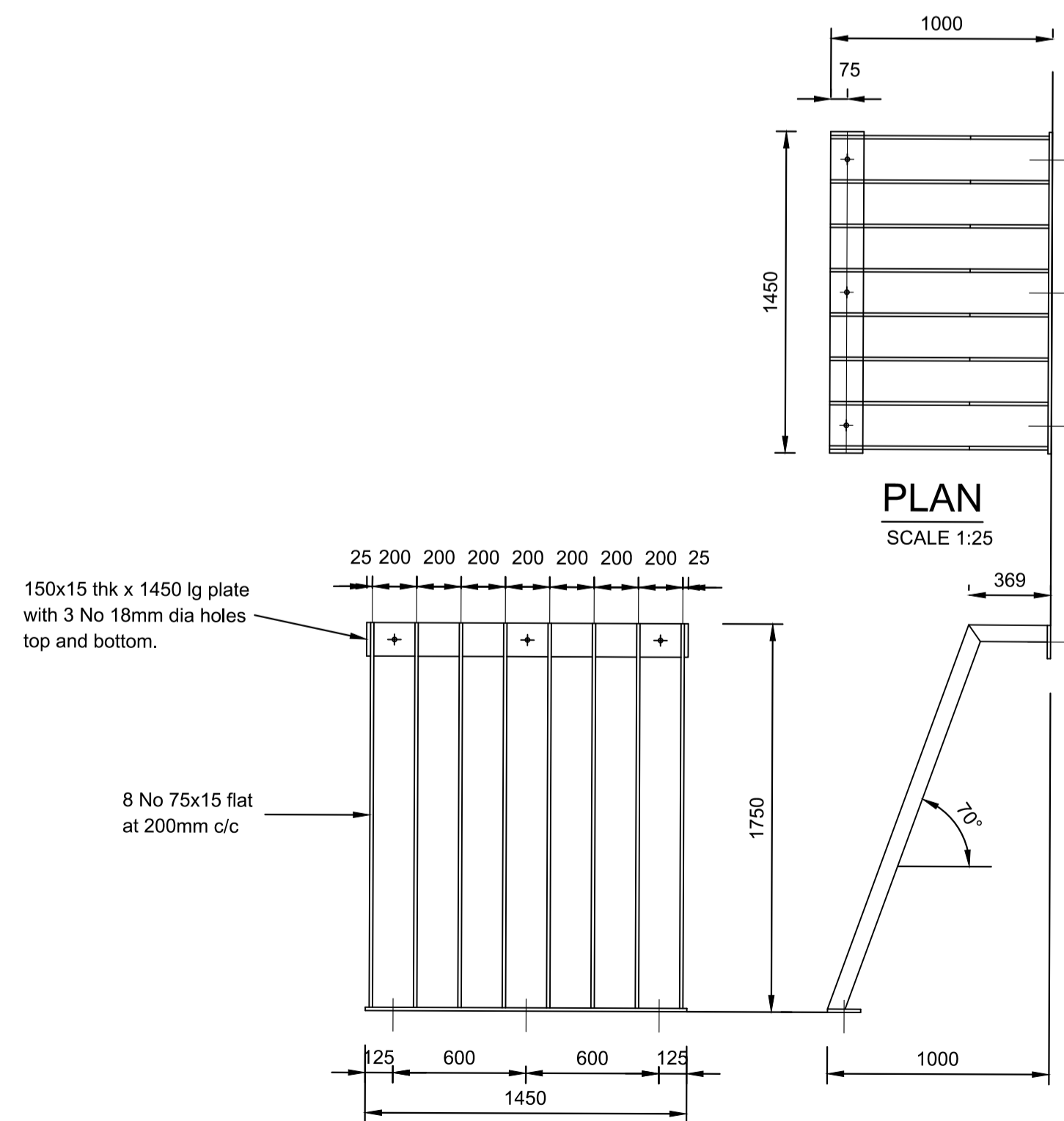
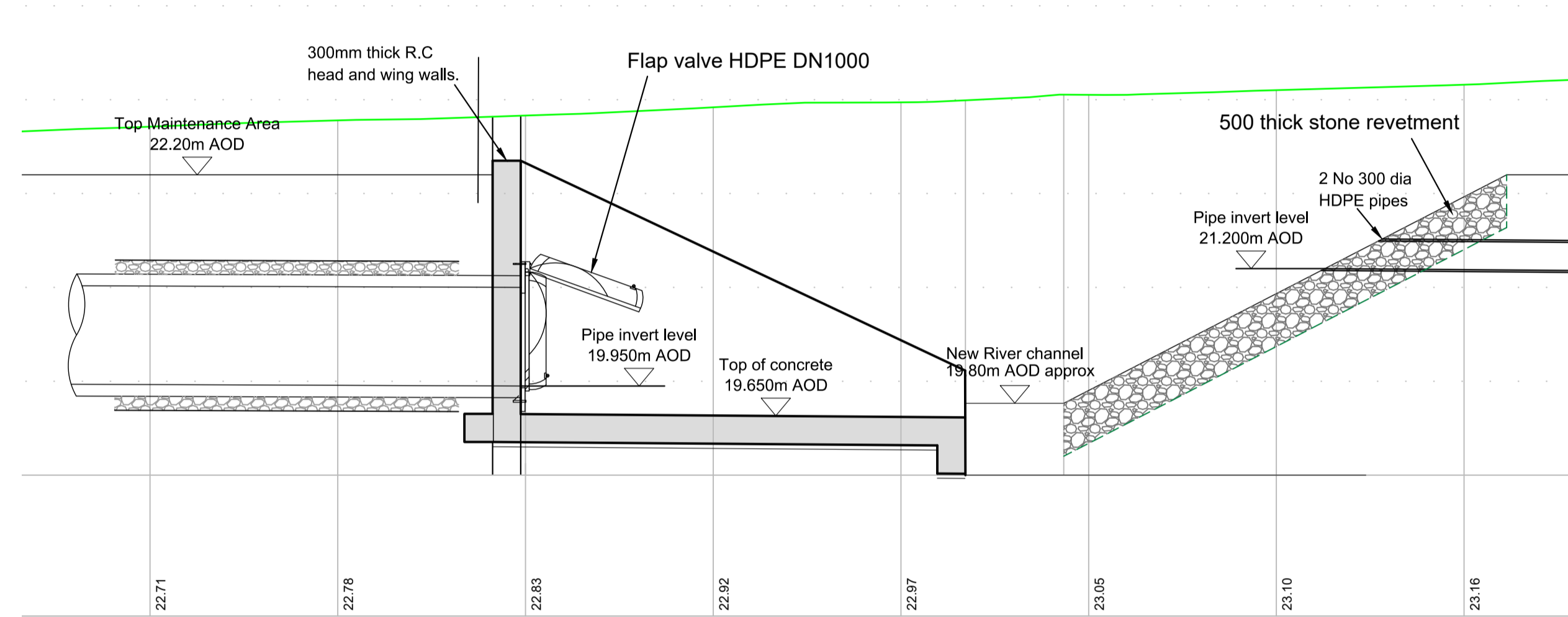
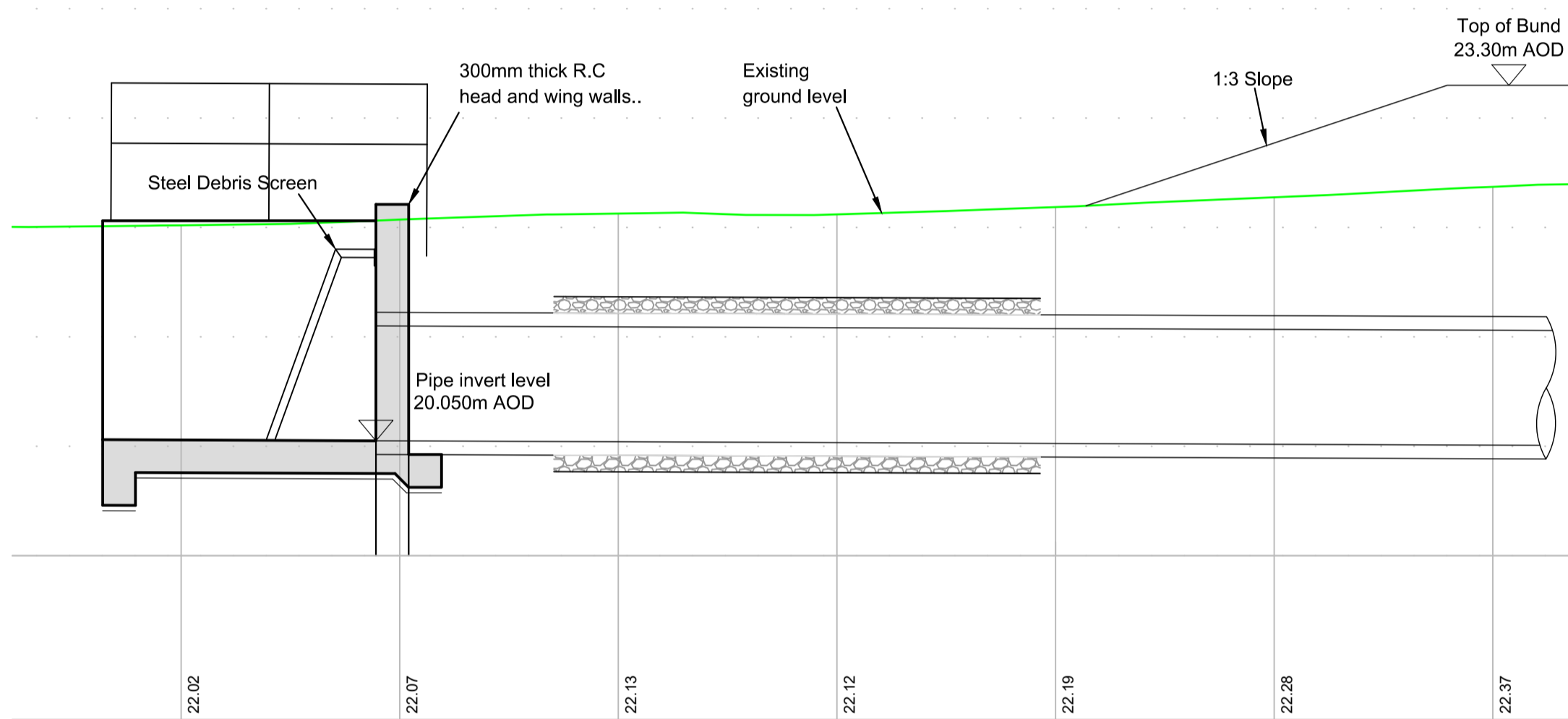
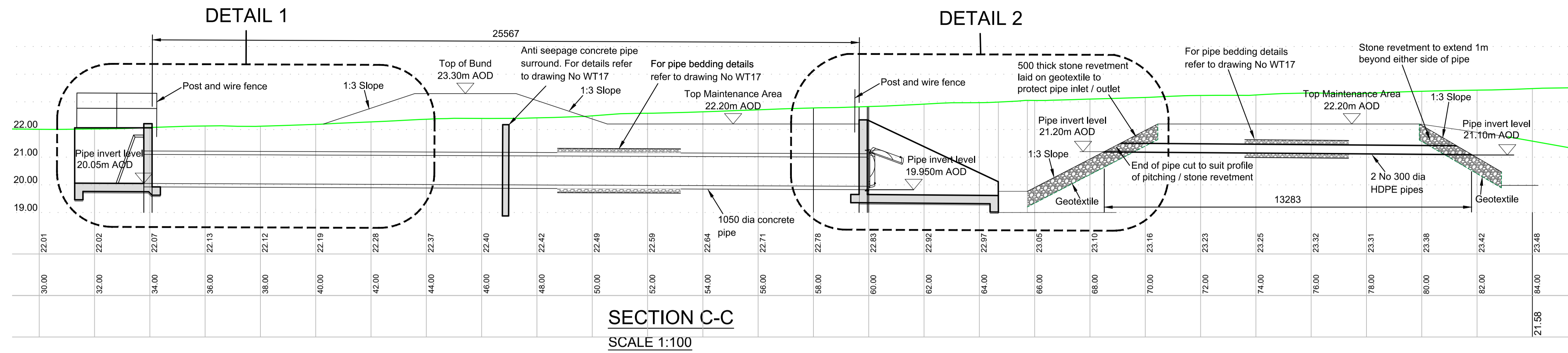
Scale:	1:200 @ A1	Drawn:	P. Forrest	Aug 2017
		Designed:	N. Hourican	Aug 2017
		Checked:	A. Craven	Sept 2017
		Approved:	A. Jones	Sept 2017

Digital File Name:	2016s3858-WT05_1-Insert Plan 2
Drawing Number:	2016s3858-WT05
Rev.:	1
Sheet No.:	1 of 1
Status:	For Issue





1. For location of Section C-C refer to drawing No WT03



**NOTES:-**

1. Screen to be fixed to structure with 6 No M16 galvanised expanding anchor bolts.
2. Screen to be fabricated from Grade S355 steel to BS EN10025.
3. All welds to be 10mm fillet welds. Grade S355 steel to BS EN10025.
4. Finish to be Hot Dip Galvanised to BS EN ISO 1461

Rev	Modifications	Date	Drawn	Designed	Checked	Approved

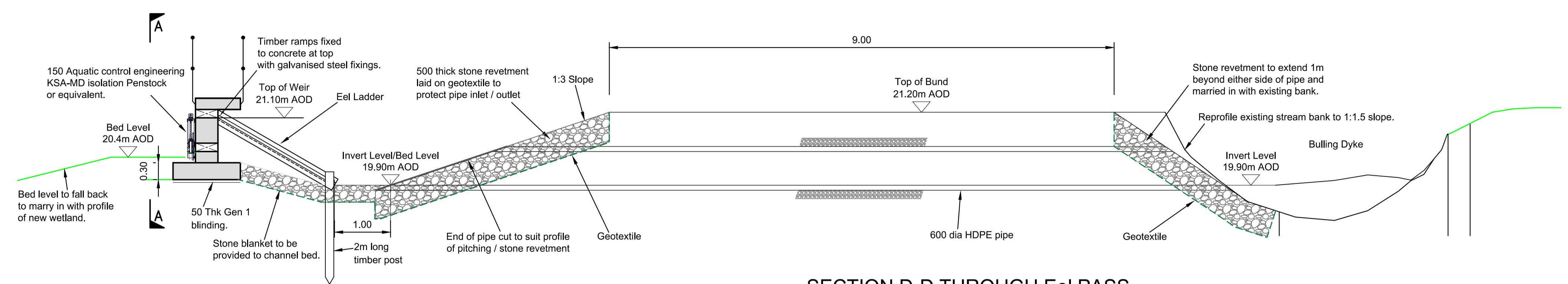
**JBA consulting**  
 Second Avenue  
 ONCHAN  
 Isle of Man  
 IM3 4LT  
 British Isles  
 www.jbaconsulting.com  
 t +44 (0)1624 695100  
 f +44 (0)1624 620386  
 e info@jbaconsulting.com

for

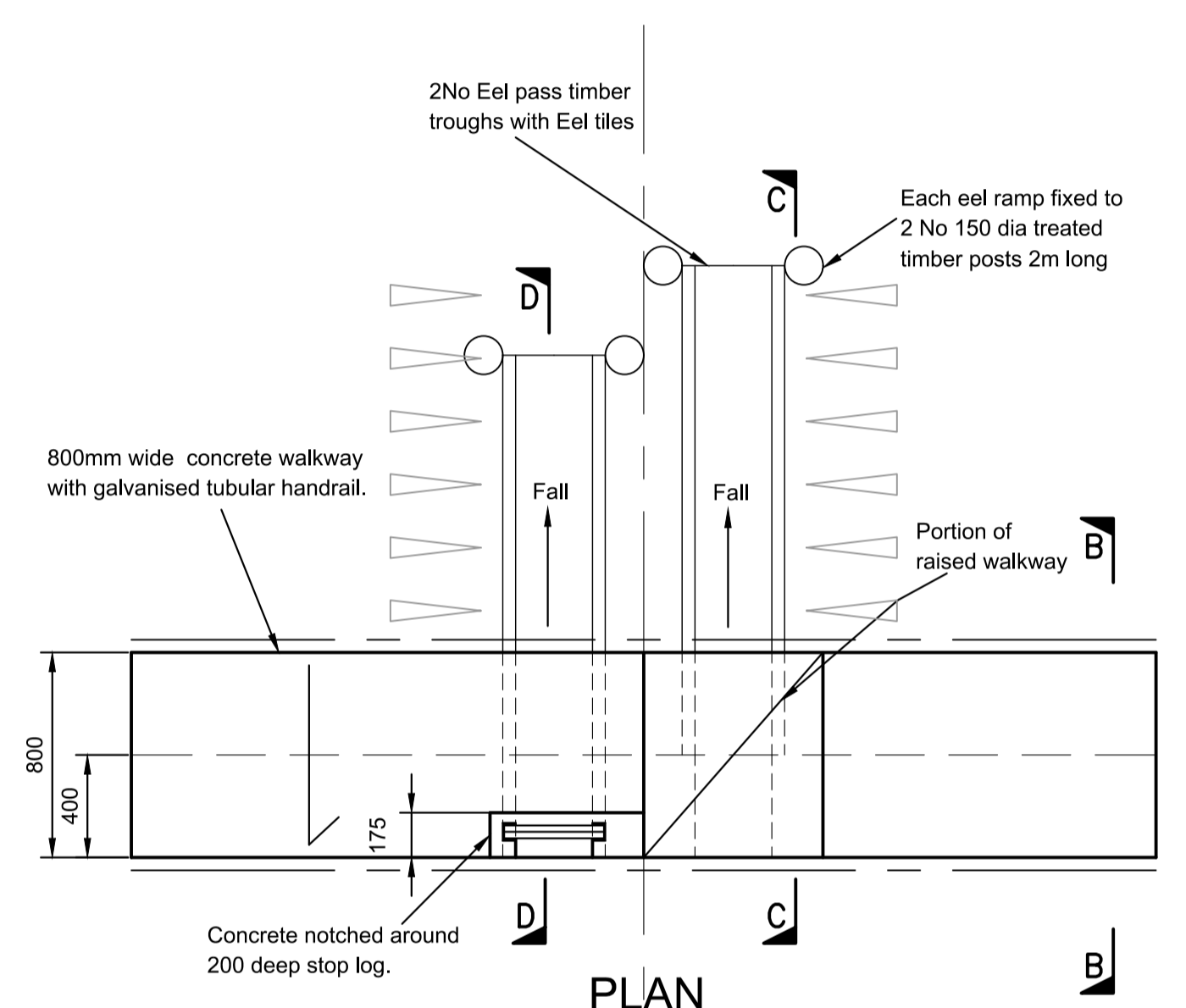
**The Garganey Trust**  
 Wombwell Wetlands Extension Scheme  
 Wings Across the Ings  
 Culverts under Bund

This document is the property of Jeremy Benn Associates Ltd. It shall not be reproduced in whole or in part, nor disclosed to a third party, without the permission of Jeremy Benn Associates Ltd.

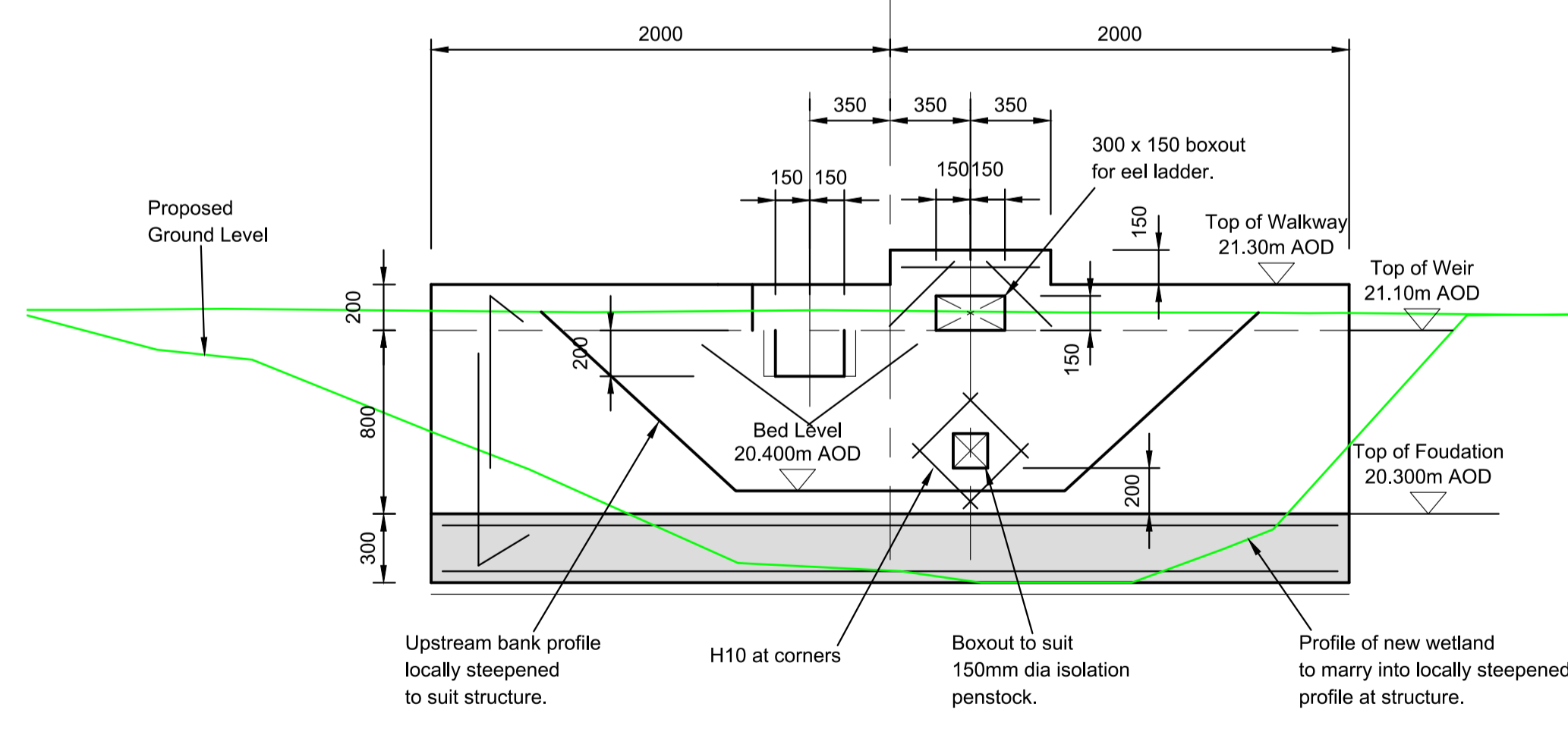
Scale:	Drawn: P. Forrest	19.09.17
as noted @ A1	Designed: N. Hourican	
	Checked:	
Digital File Name:	2016s3858-WT03-Culverts Under Bund	
Drawing Number:	Rev.:	Status:
2016s3858-WT08		1 of 1



**SECTION D-D THROUGH Eel PASS**  
 For location refer to drawing No WT03  
 SCALE 1:50

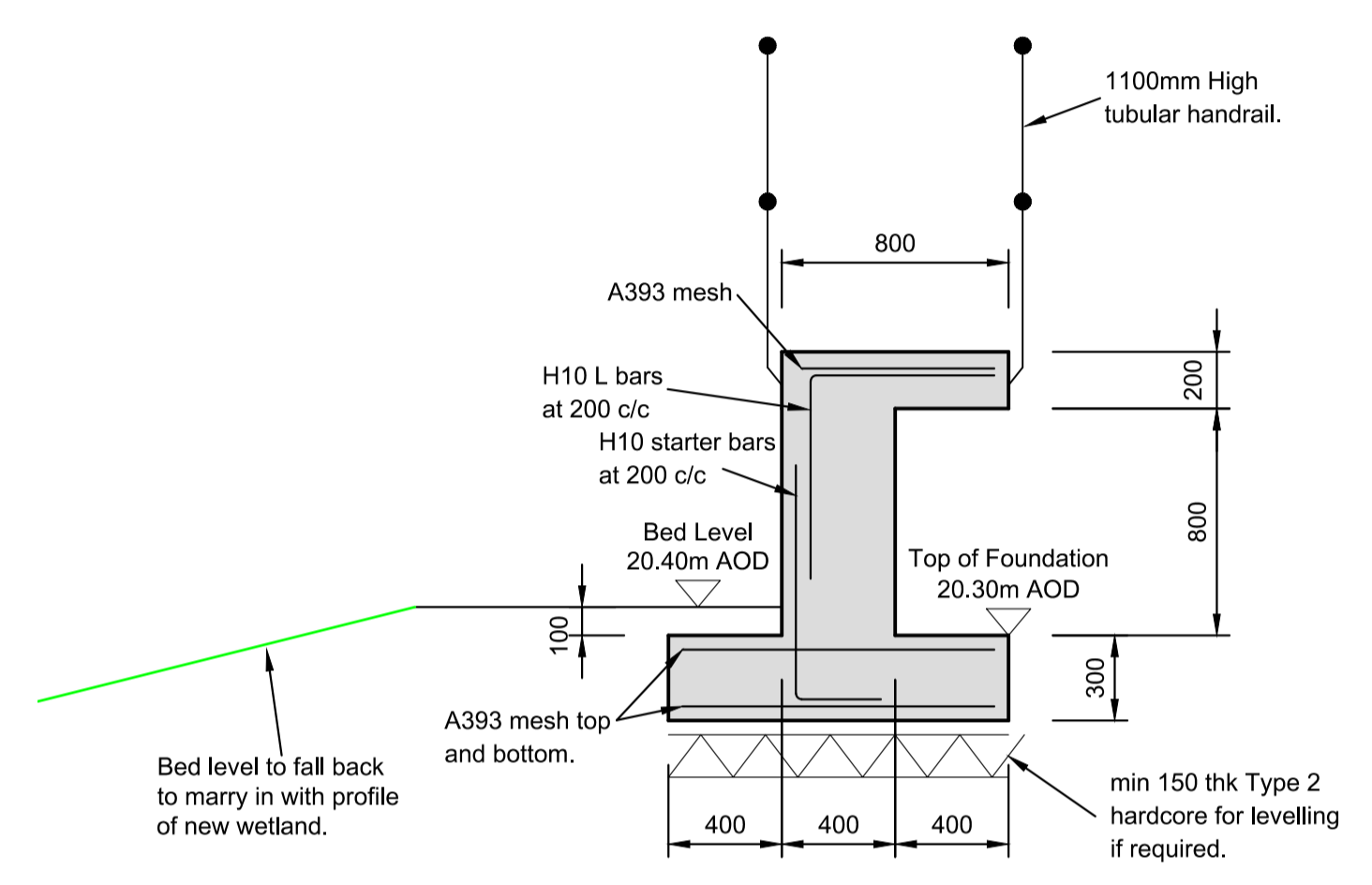


**PLAN**  
 SCALE 1:25

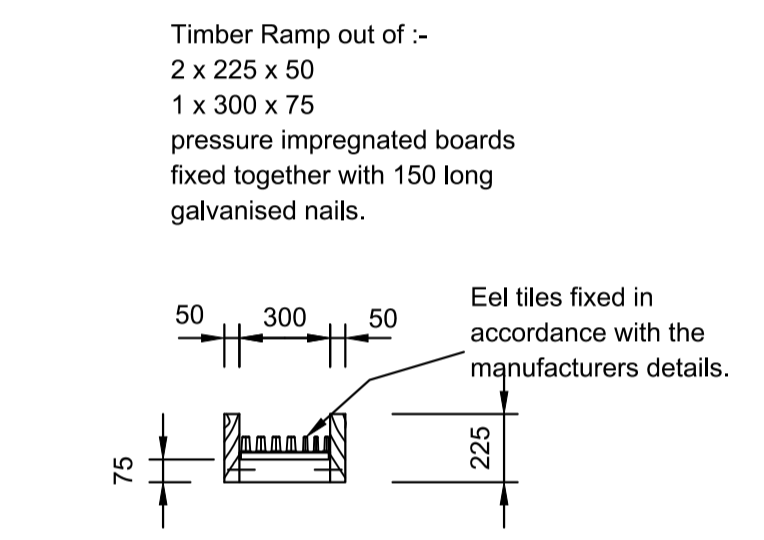


**WALL ELEVATION A-A**  
 SCALE 1:25

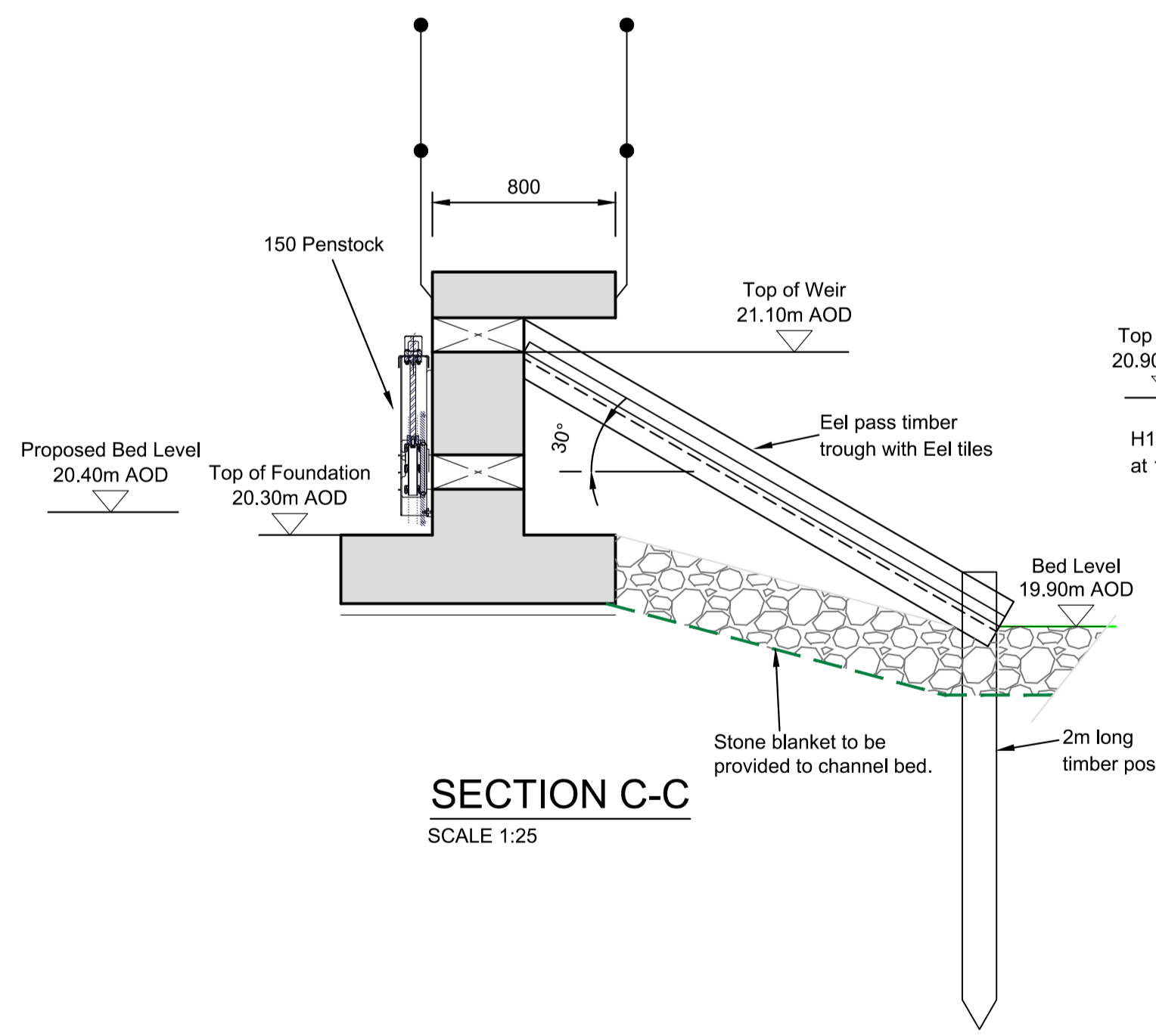
Reinforcement to be cut to suit around all openings.  
 Minimum cover to be 50mm.  
 Concrete grade to be RC40



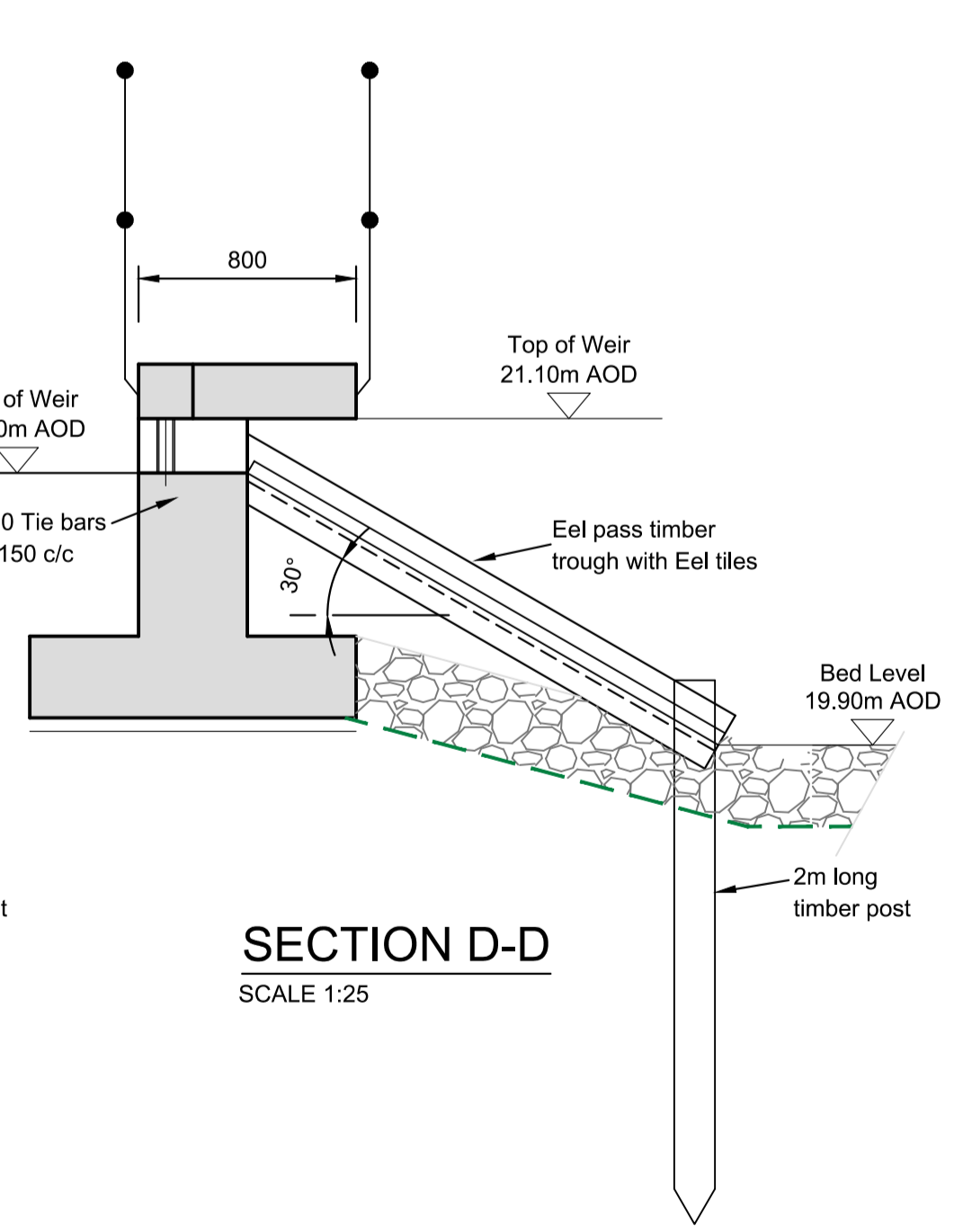
**SECTION B-B**  
 SCALE 1:25



**TYPICAL SECTION THROUGH TROUGHS**  
 SCALE 1:25



**SECTION C-C**  
 SCALE 1:25



**SECTION D-D**  
 SCALE 1:25

Rev	Modifications	Date	Drawn	Designed	Checked	Approved



Second Avenue  
 ONCHAN  
 Isle of Man  
 IM5 4LT  
 British Isles  
 www.jbaconsulting.com  
 +44 (0)1624 695100  
 +44 (0)1624 620366  
 info@jbaconsulting.com

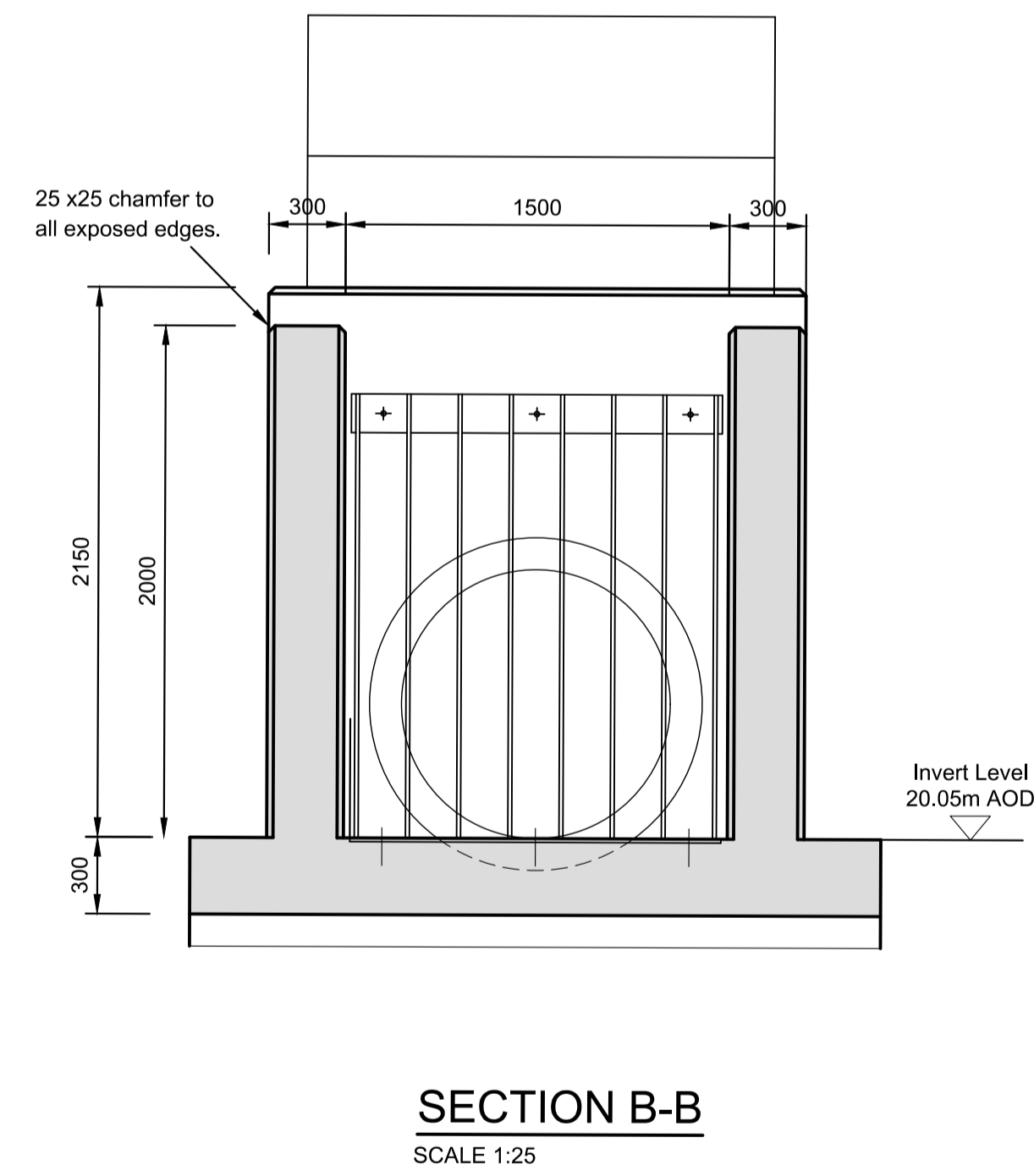
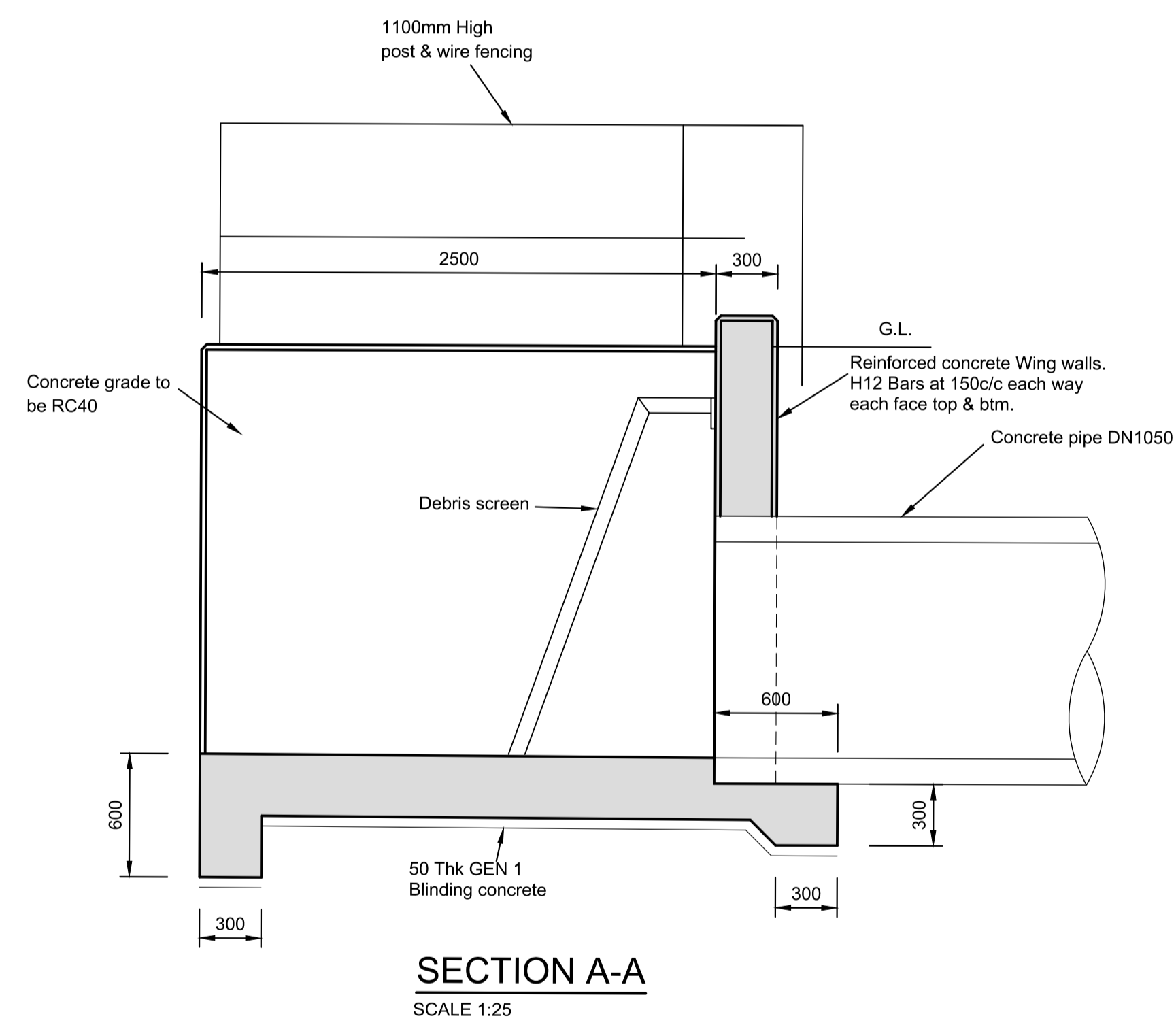
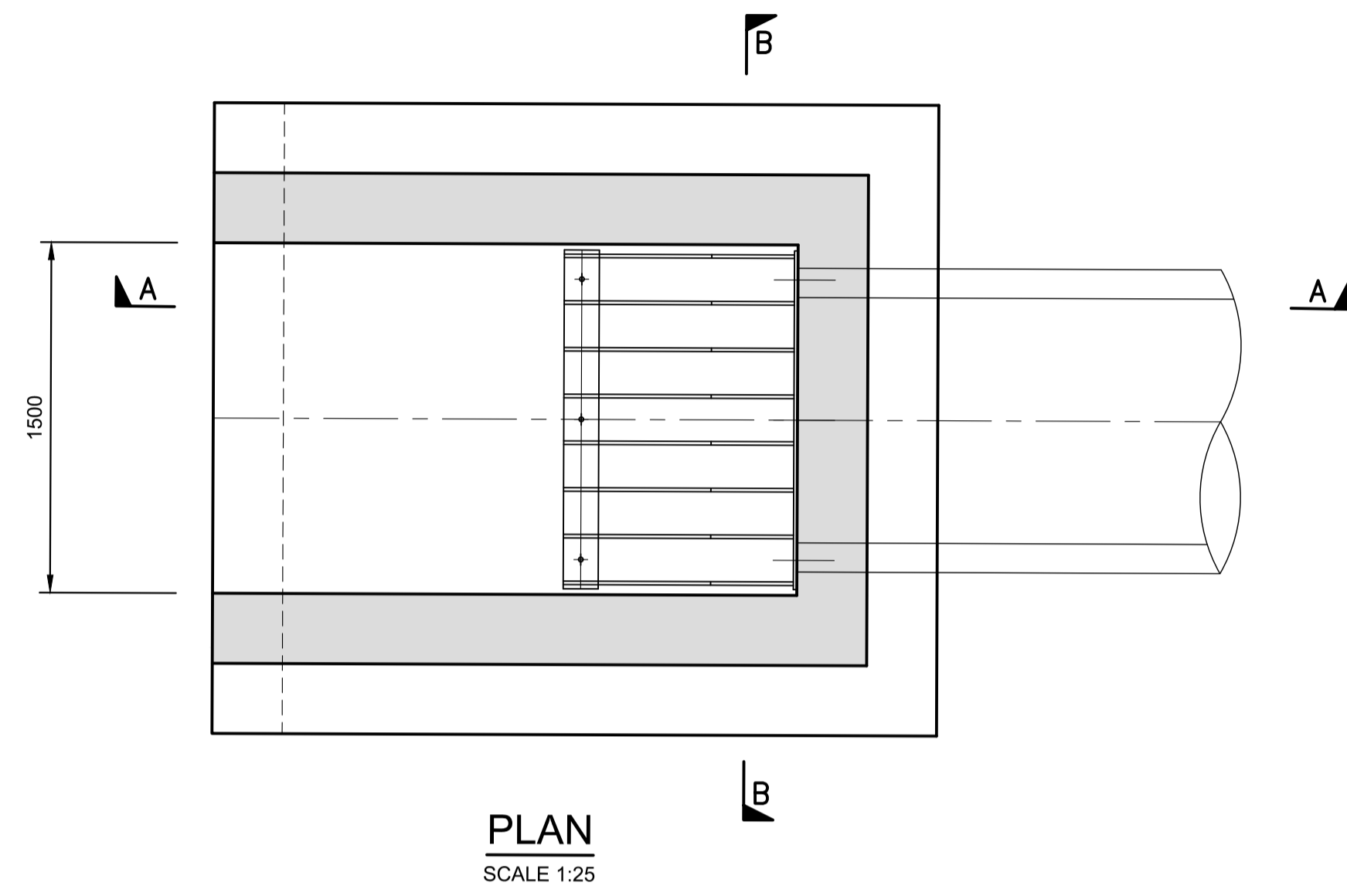


Offices at Colchester, Doncaster, Edinburgh, Exeter, Haywards Heath, Limerick, Newcastle upon Tyne, Onchan, Newport, Salford, Skipton, Tadcaster, Thirsk, Wallingford and Warrington

for  
**The Garganey Trust**  
 Wombwell Wetlands Extension Scheme  
 Wings Across the Ings  
 Eel Ladder and Control Structure

This document is the property of Jeremy Benn Associates Ltd. It shall not be reproduced in whole or in part, nor disclosed to a third party, without the permission of Jeremy Benn Associates Ltd.

Scale:	as shown@ A1	Drawn:	P.Forrest	19.09.17
		Designed:	N. Hourican	
		Checked:		
		Approved:		
Digital File Name:	2016s3858-WT09-Eel Ladder			
Drawing Number:	2016s3858-WT09	Rev.:	Sheet No.:	Status:
			1 of 1	



Rev	Modifications	Date	Drawn	Designed	Checked	Approved


 Second Avenue  
 ONCHAN  
 Isle of Man  
 IM3 4LT  
 British Isles  
[www.jbaconsulting.com](http://www.jbaconsulting.com)  
 t +44 (0)1624 695100  
 f +44 (0)1624 620386  
 e [info@jbaconsulting.com](mailto:info@jbaconsulting.com)



Offices at: Colleshill, Doncaster, Edinburgh, Exeter, Haywards Heath, Limerick, Newcastle upon Tyne, Onchan, Newport, Salfaire, Skipton, Tadcaster, Thirsk, Wallingford and Warrington

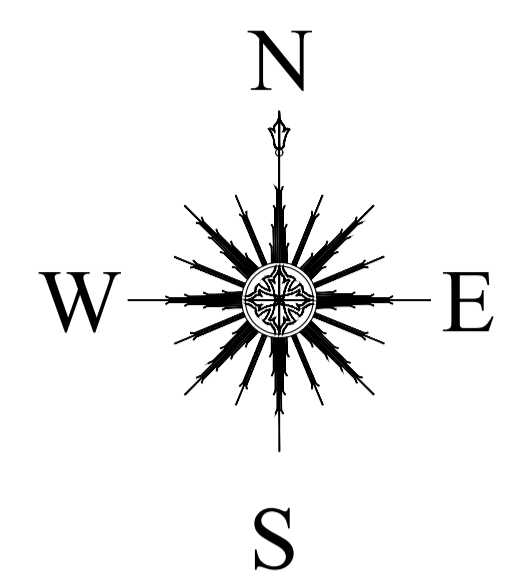
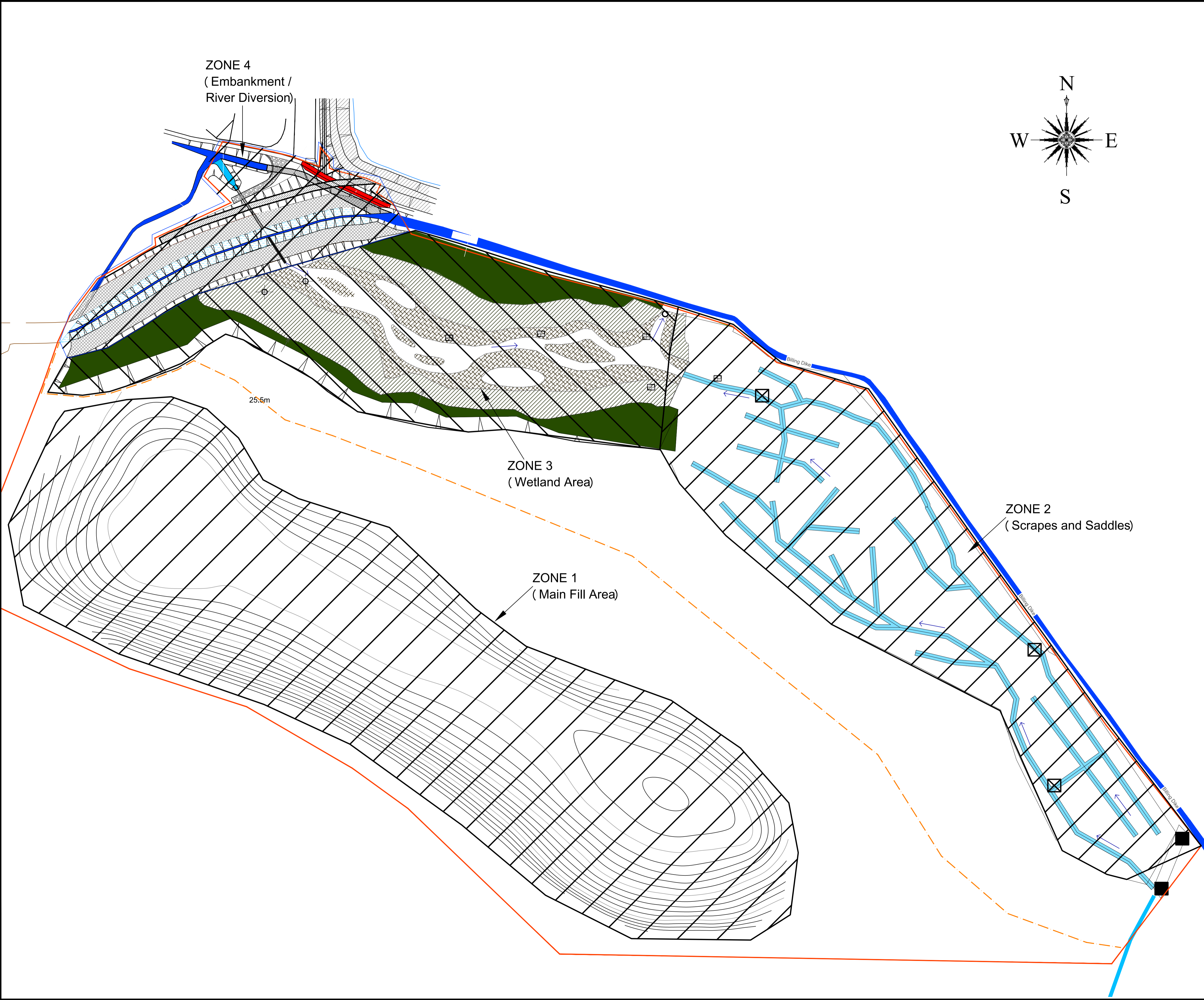
for

**The Garganey Trust**  
 Wombwell Wetlands Extension Scheme  
 Wings Across the Ings  
 Culvert head walls-1

This document is the property of Jeremy Benn Associates Ltd. It shall not be reproduced in whole or in part, nor disclosed to a third party, without the permission of Jeremy Benn Associates Ltd.

Scale: 1:25@ A1	Drawn: P. Forrest	19.09.17
	Designed: N. Hourican	
	Checked:	
Digital File Name: 2016s3858-WT10-Culvert Head walls-1		
Drawing Number: 2016s3858-WT10	Rev.:	Sheet No.: 1 of 1
		Status:





ZONE 4  
(Embankment /  
River Diversion)

ZONE 3  
(Wetland Area)

ZONE 1  
(Main Fill Area)

ZONE 2  
(Scrapes and Saddles)

25.6m

Billing Dike

Billing Dike

Billing Dike

Rev	Modifications	Date	Drawn	Designed	Checked	Approved

**JBA**  
consulting

Second Avenue  
ONCHAN  
Isle of Man  
IM3 4LT  
British Isles

www.jbaconsulting.com  
t +44 (0)1624 695100  
f +44 (0)1624 620366  
e info@jbaconsulting.com

Offices at: Colehill, Doncaster, Edinburgh, Exeter, Haywards Heath, Limerick, Newcastle upon Tyne, Onchan, Newport, Saltair, Skipton, Tadcaster, Thirk, Wallingford and Warrington



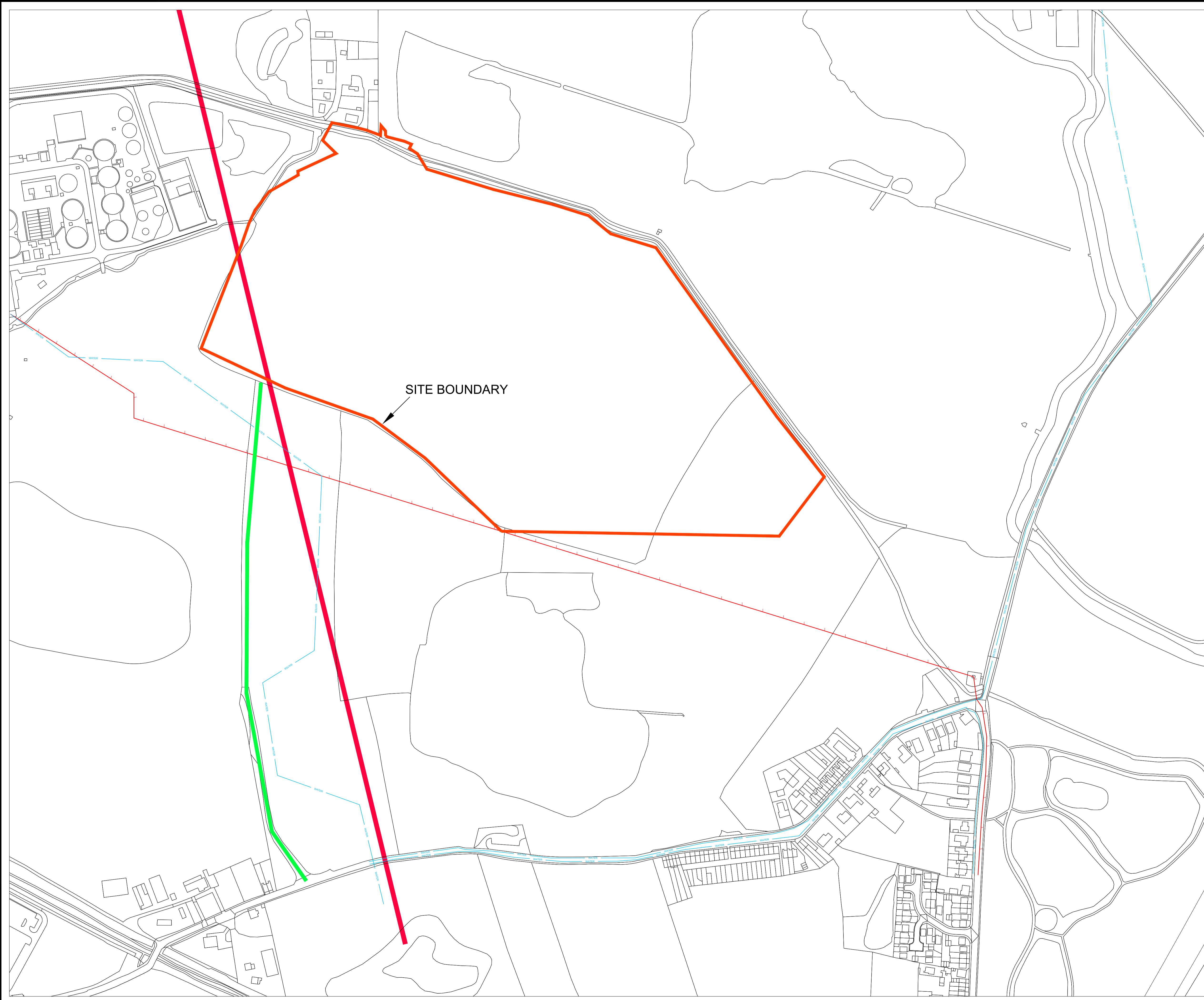
for

**The Garganey Trust**  
**Wombwell Wetlands Extension Scheme**  
Wings Across The Ings  
Earth Works Zones

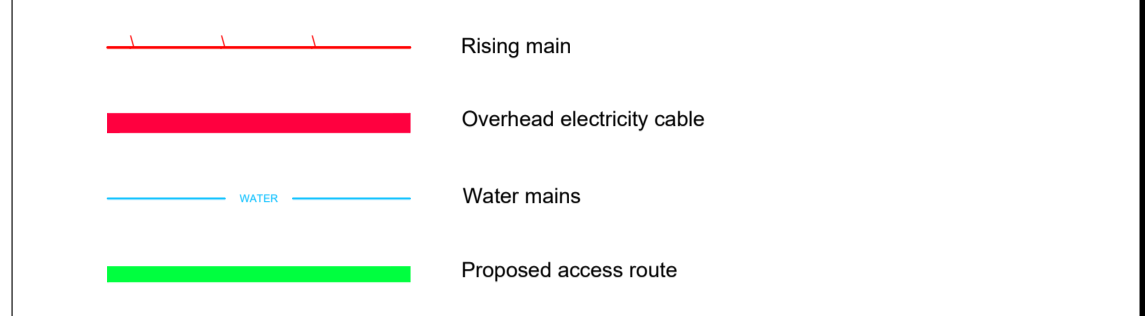
This document is the property of Jeremy Benn Associates Ltd. It shall not be reproduced in whole or in part, nor disclosed to a third party, without the permission of Jeremy Benn Associates Ltd.

Scale:	1:1000 @ A1	Drawn:	P. Forrest	Aug 2017
		Designed:	N. Hourican	Aug 2017
		Checked:	A. Craven	Sept 17
		Approved:	A. Craven	Sept 17

Digital File Name:	2016s3858-WT12-Earth Works Zones	Rev.:	Sheet No.:	Status:
Drawing Number:	2016s3858-WT12		1 of 1	For Issue



- General Notes**
1. All dimensions shown are in millimetres unless otherwise stated and levels in metres to Ordnance Datum.
  2. Do not scale from this drawing. All dimensions must be checked/verified on site.
  3. Any discrepancies noted on site are to be reported to the Engineer immediately.
  4. All works in watercourses will be carried out with care to minimise the risk of pollution adhering to Pollution Prevention Guidelines.
  5. The locations of any known services shown on drawing are approximate and for guidance only. The Contractor will confirm the location of any services prior to the commencement of any works.
  6. The electronic model of this drawing is not to be used for setting out.



Rev	Modifications	Date	Drawn	Designed	Checked	Approved


 Second Avenue  
 ONCHAN  
 Isle of Man  
 IM3 4LT  
 British Isles  
  
[www.jbaconsulting.com](http://www.jbaconsulting.com)  
 t +44 (0)1624 695100  
 f +44 (0)1624 620386  
 e [info@jbaconsulting.com](mailto:info@jbaconsulting.com)



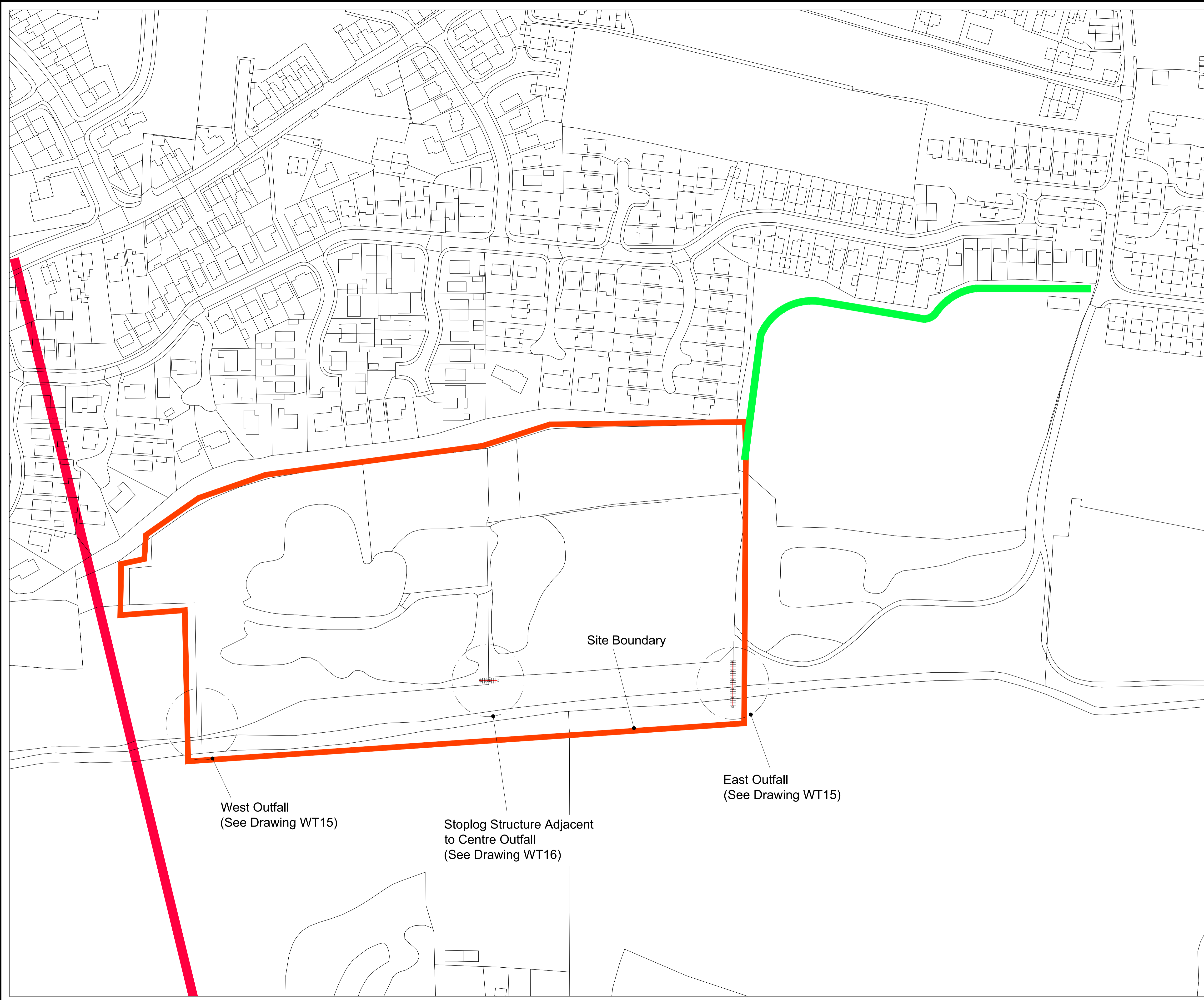
Offices at: Colehill, Doncaster, Edinburgh, Exeter, Haywards Heath, Limerick, Newcastle upon Tyne, Onchan, Newport, Saltair, Skipton, Tadcaster, Thirk, Wallingford and Warrington

for



**The Garganey Trust**  
**Wombwell Wetlands Extension Scheme**  
 Wings Across The Ings  
 Site Access and Existing Services Layout

This document is the property of Jeremy Benn Associates Ltd. It shall not be reproduced in whole or in part, nor disclosed to a third party, without the permission of Jeremy Benn Associates Ltd.

Scale:	1:2000 @ A1	Drawn:	Peter Wilkinson	09/10/2017
		Designed:	Gregory Parkinson	09/10/2017
		Checked:		
		Approved:		
Digital File Name:	2016s3858-WT13-Site Access and Services			
Drawing Number:	2016s3858-WT13	Rev.:	Sheet No.:	Status:
			1 of 1	



- General Notes
1. All dimensions shown are in millimetres unless otherwise stated and levels in metres to Ordnance Datum.
  2. Do not scale from this drawing. All dimensions must be checked/verified on site.
  3. Any discrepancies noted on site are to be reported to the Engineer immediately.
  4. All works in watercourses will be carried out with care to minimise the risk of pollution adhering to Pollution Prevention Guidelines.
  5. The locations of any known services shown on drawing are approximate and for guidance only. The Contractor will confirm the location of any services prior to the commencement of any works.
  6. The electronic model of this drawing is not to be used for setting out.

 Overhead electricity cable  
 Proposed access route

Rev	Modifications	Date	Drawn	Designed	Checked	Approved


 Second Avenue  
 ONCHAN  
 Isle of Man  
 IM3 4LT  
 British Isles  
 www.jbaconsulting.com  
 t +44 (0)1624 695100  
 f +44 (0)1624 620386  
 e info@jbaconsulting.com



for

**The Garganey Trust**  
**Doveside**

Site Boundary and Layout

This document is the property of Jeremy Benn Associates Ltd. It shall not be reproduced in whole or in part, nor disclosed to a third party, without the permission of Jeremy Benn Associates Ltd.

Scale:	1:1000 @ A1	Drawn:	Peter Wilkinson	09/10/2017
		Designed:	Gregory Parkinson	09/10/2017
		Checked:		
		Approved:		
Digital File Name:	2016s3858-WT14-Site Boundary and Layout			
Drawing Number:	2016s3858-WT14	Rev.:	Sheet No.:	Status:
			1 of 1	









- General Notes**
- All dimensions shown are in millimetres unless otherwise stated and levels in metres to Ordnance Datum.
  - Do not scale from this drawing. All dimensions must be checked/verified on site.
  - Any discrepancies noted on site are to be reported to the Engineer immediately.
  - All works in watercourses will be carried out with care to minimise the risk of pollution adhering to Pollution Prevention Guidelines.
  - The locations of any known services shown on drawing are approximate and for guidance only. The Contractor will confirm the location of any services prior to the commencement of any works.
  - The electronic model of this drawing is not to be used for setting out.

**Key**

- Overhead electricity cable
- Proposed access route
- Existing drain
- Proposed drain
- Flow direction
- Sewer outfall
- Areas of seasonal inundations
- Water level 0-200mm
- Water level 200-400mm
- Water level 400mm+
- Proposed Scrape
- Weir
- Bund
- Path
- Observation point

Rev	Modifications	Date	Drawn	Designed	Checked	Approved

**JBA consulting**

Second Avenue  
ONCHAN  
Isle of Man  
IM3 4LT  
British Isles

www.jbaconsulting.com  
t +44 (0)1624 695100  
f +44 (0)1624 620386  
e info@jbaconsulting.com

Offices at: Colchester, Doncaster, Edinburgh, Exeter, Haywards Heath, Limerick, Newcastle upon Tyne, Onchan, Newport, Salford, Skipton, Tadcaster, Thirsk, Wallingford and Warrington

for

**The Garganey Trust**  
**Doveside**  
**Wombwell**  
**General Arrangement**

This document is the property of Jeremy Benn Associates Ltd. It shall not be reproduced in whole or in part, nor disclosed to a third party, without the permission of Jeremy Benn Associates Ltd.

Scale: 1:1000 @ A1

Drawn: Peter Wilkinson 24/10/2017  
Designed: Gregory Parkinson 24/10/2017  
Checked:  
Approved:

Digital File Name: 2016s3858-WT18-General Arrangement

Drawing Number: 2016s3858-WT18      Rev.:      Sheet No.: 1 of 1      Status:

