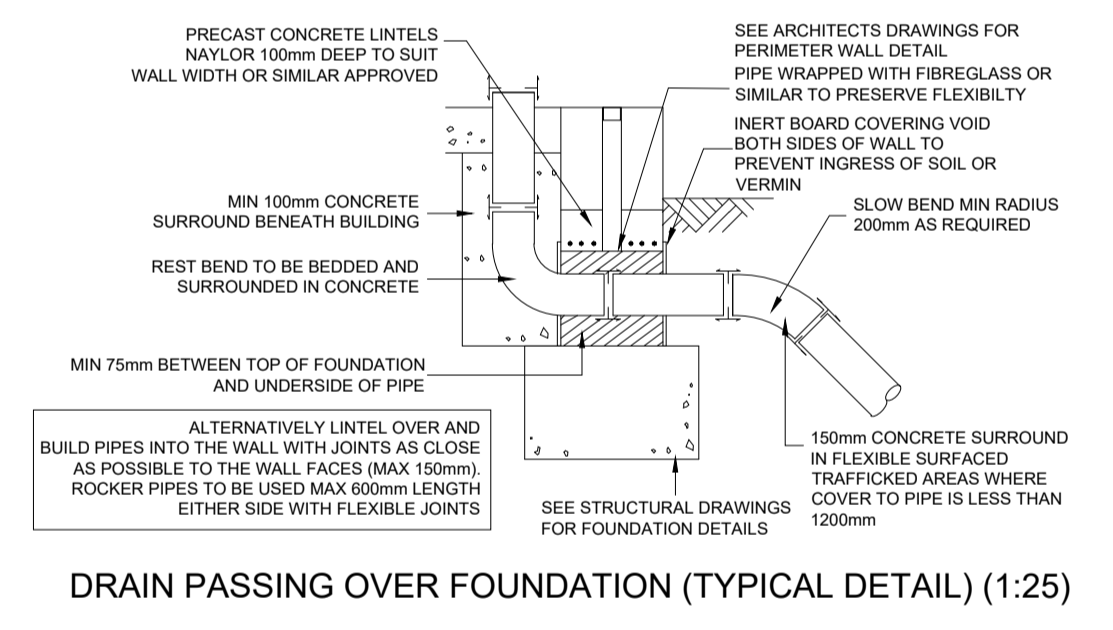
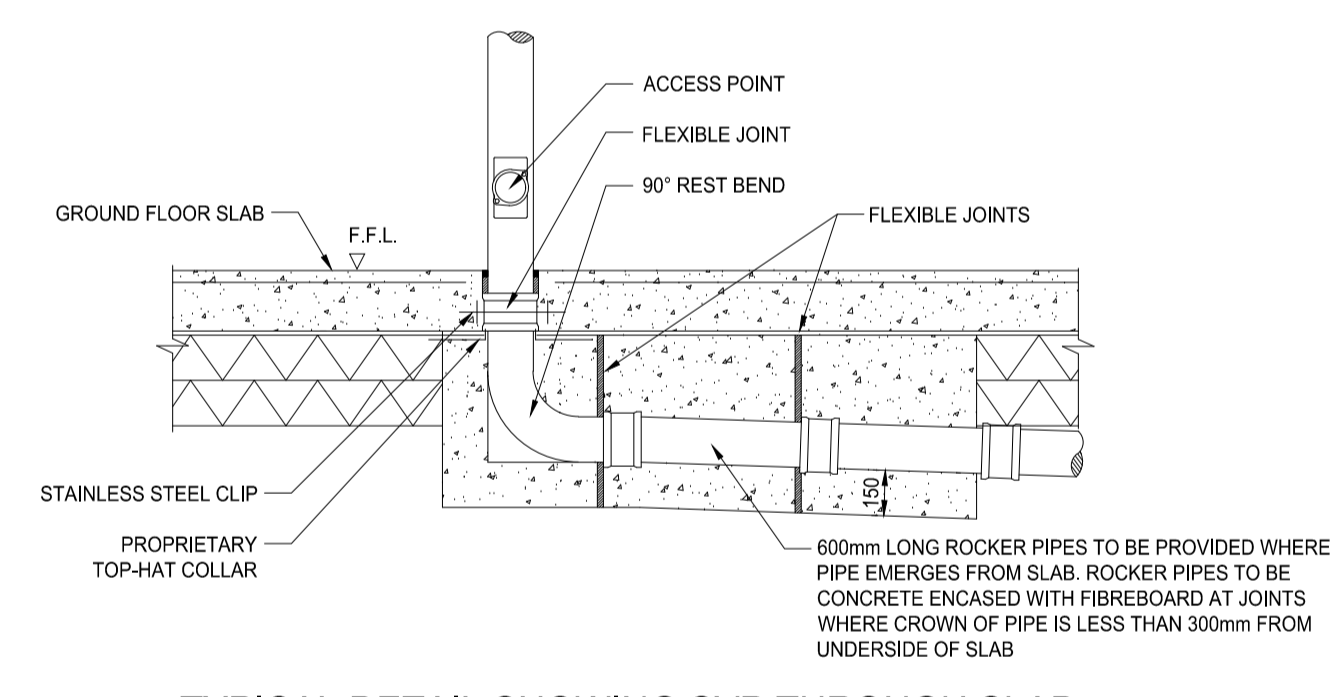
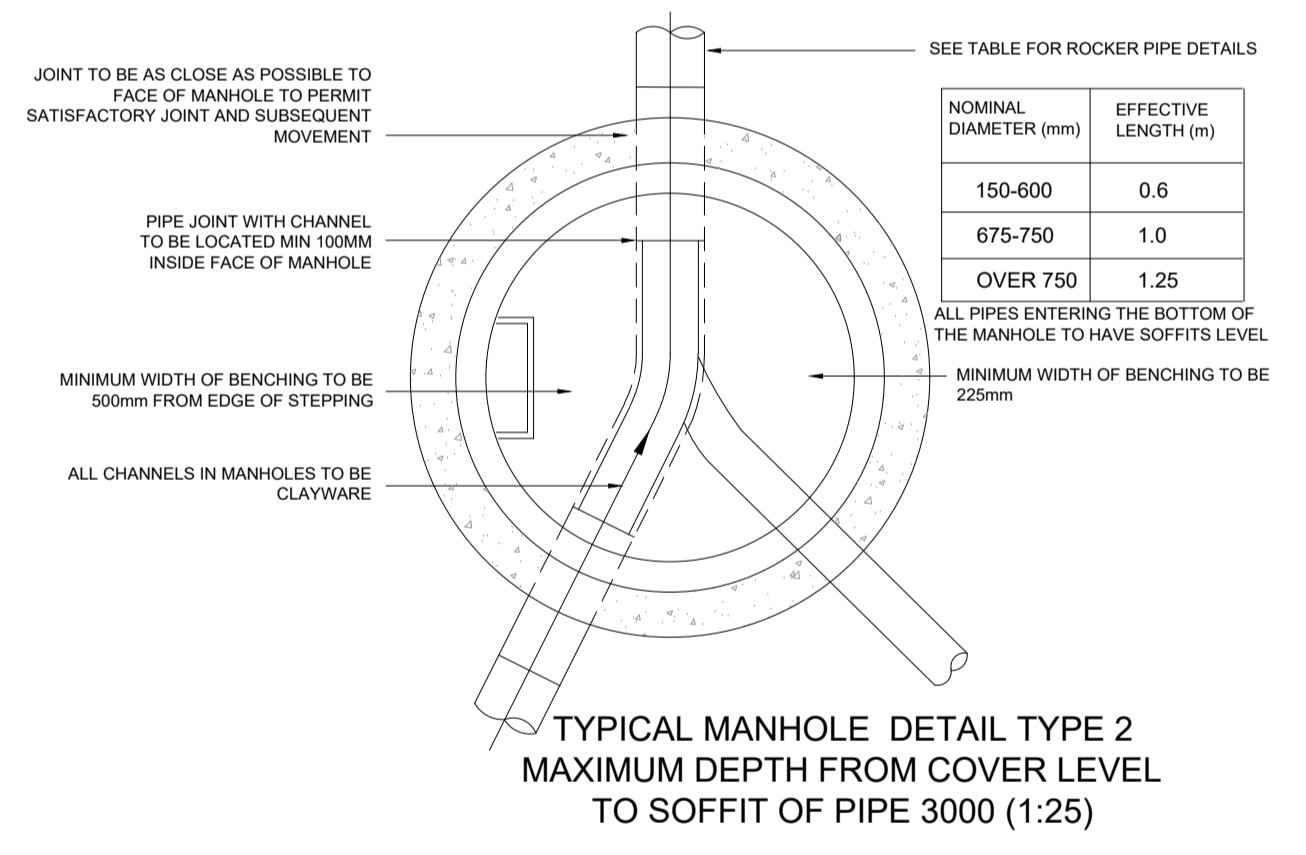
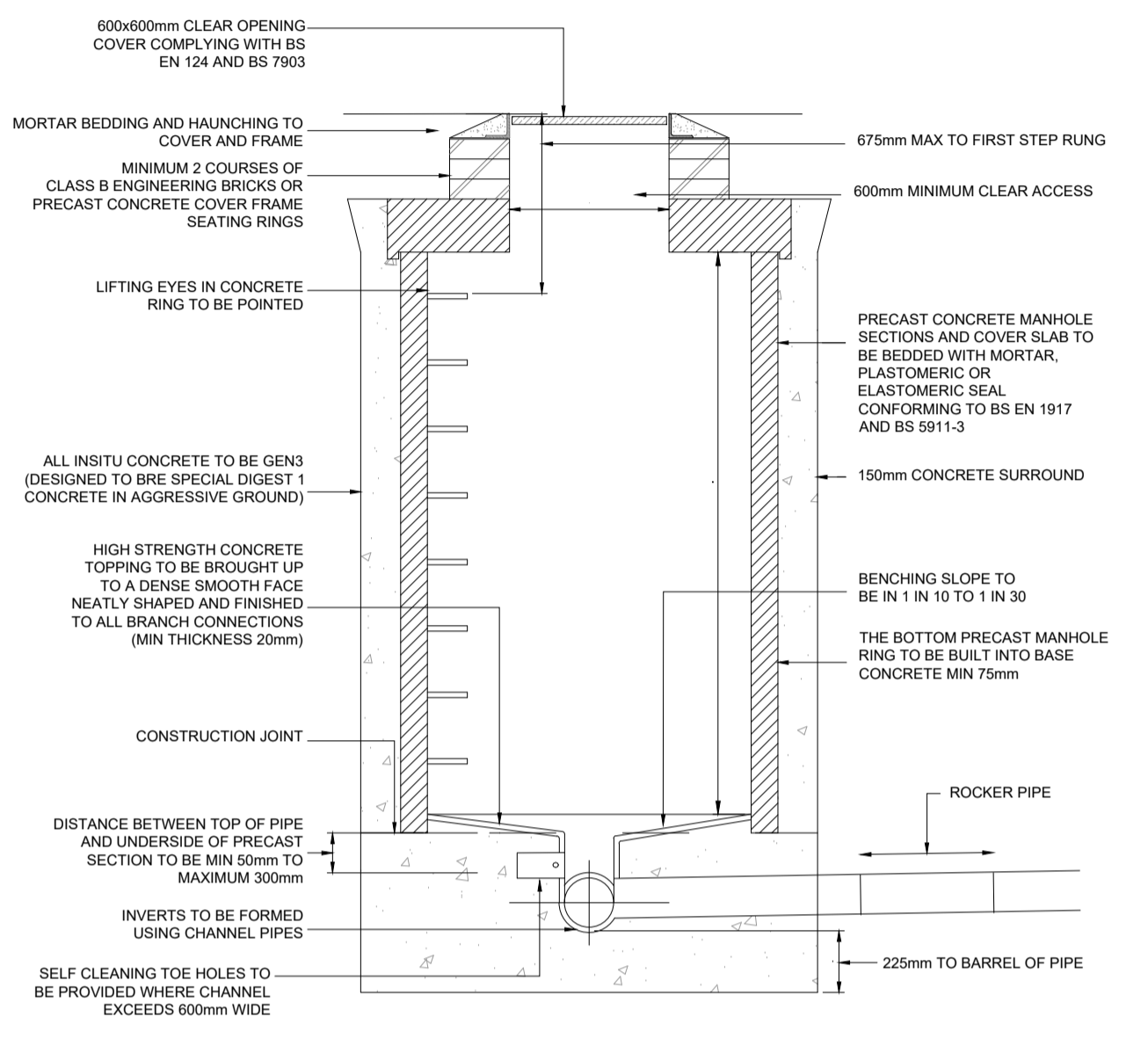
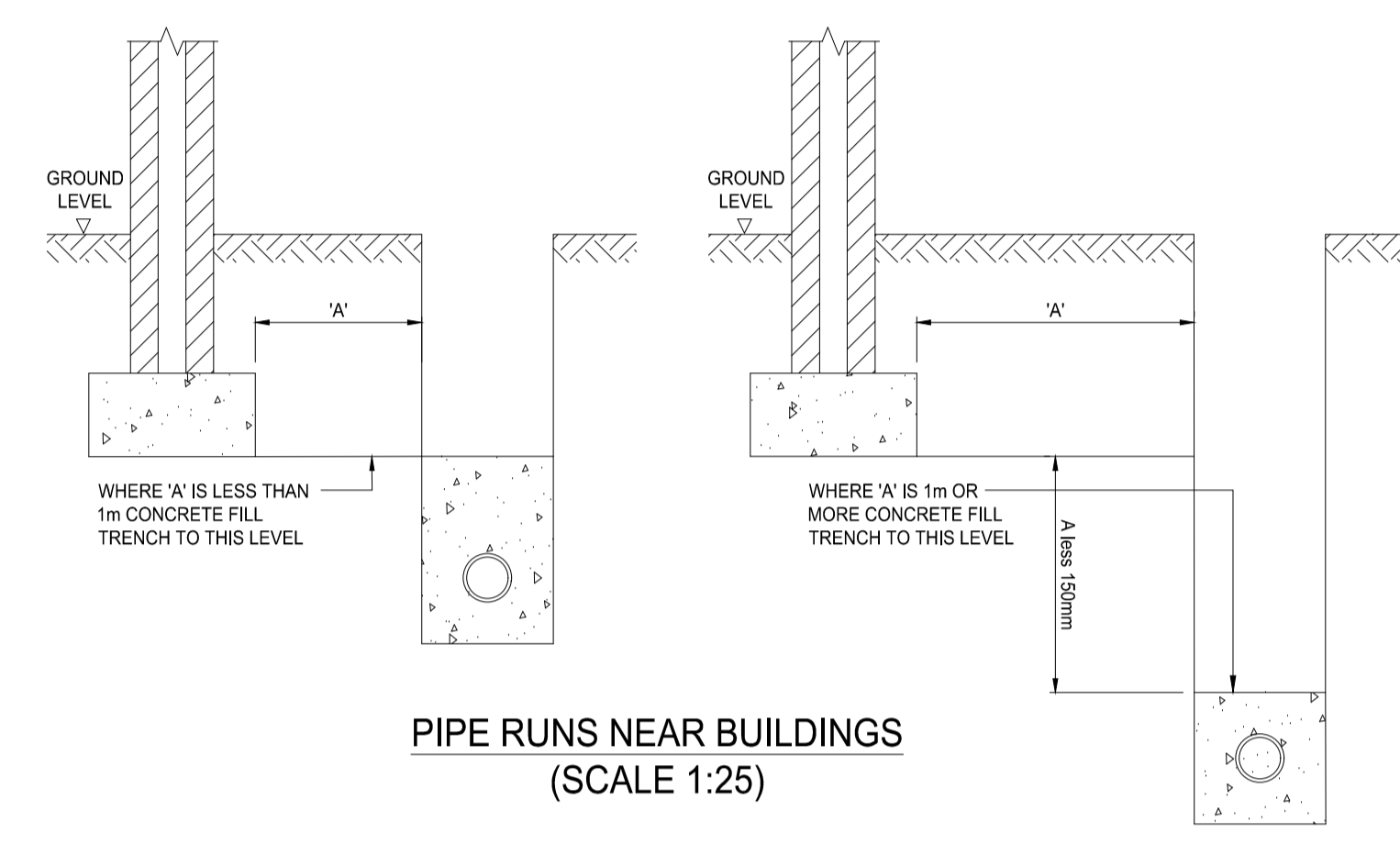
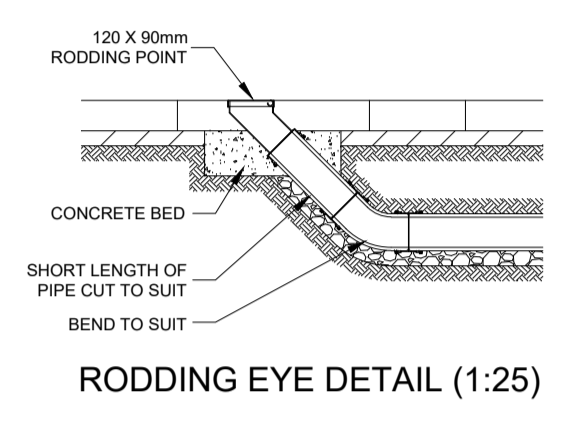
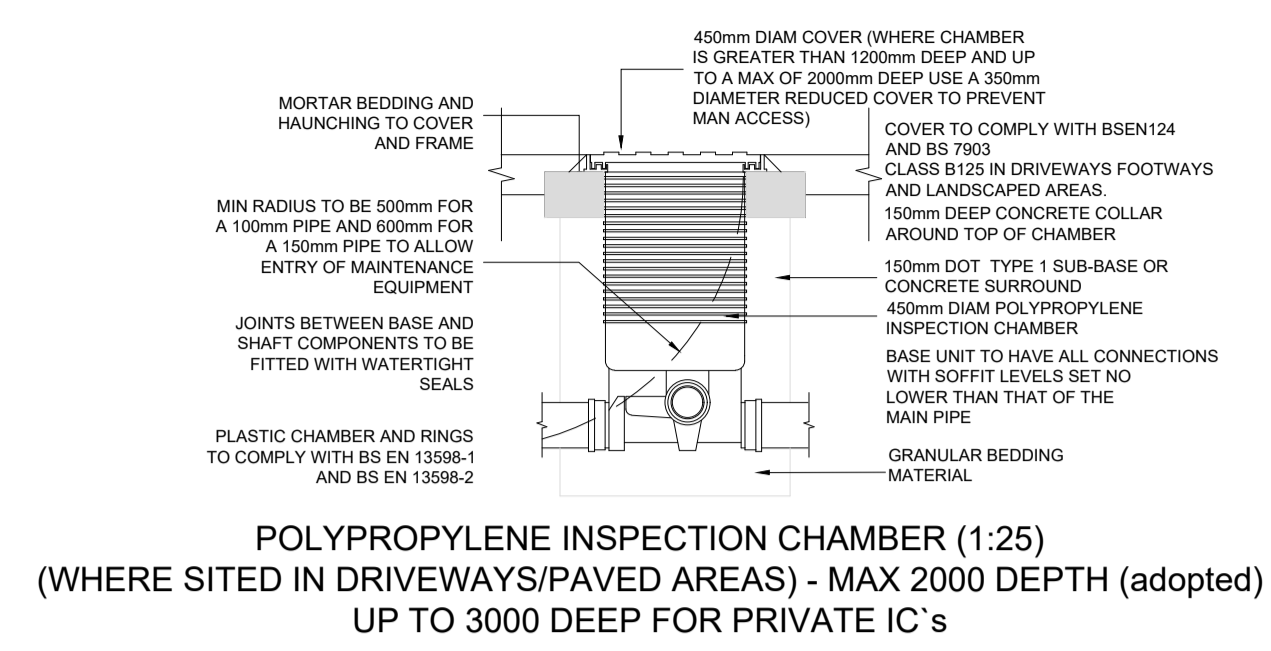
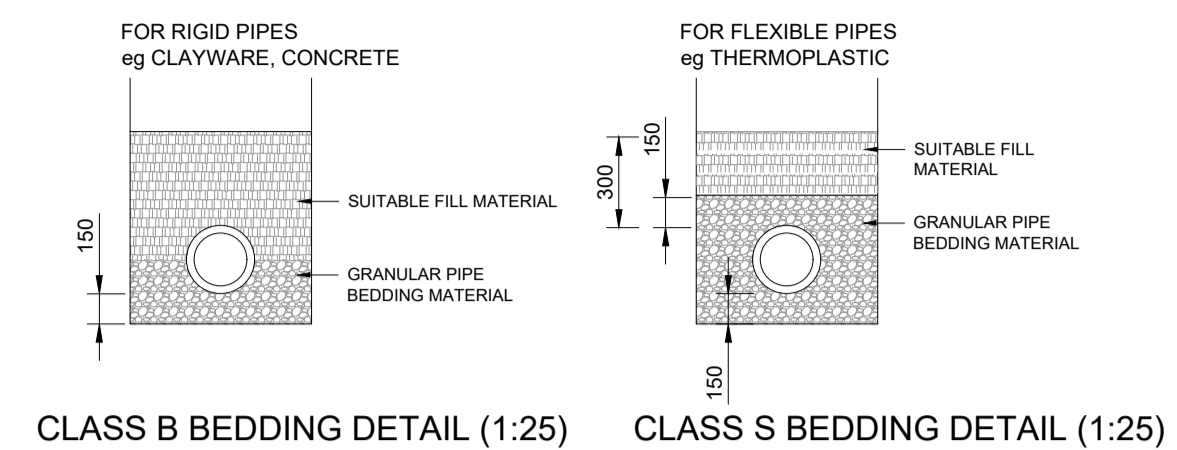
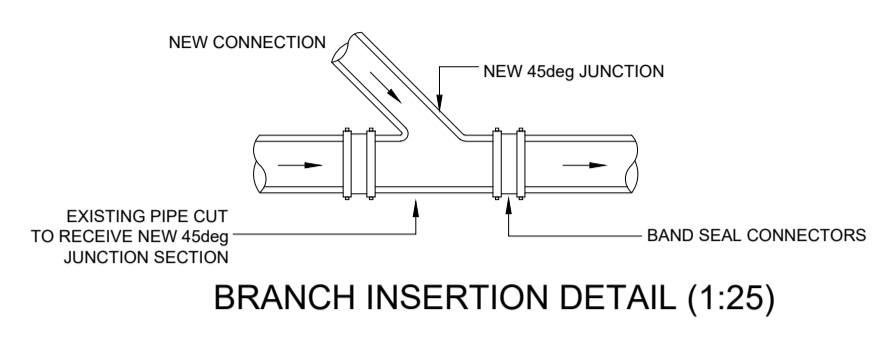


Notes:
 1. This drawing is to be read in conjunction with all relevant architect's and engineer's drawings.
 2. It is assumed that all works will be carried out by a competent contractor working, where appropriate, to an approved method statement.

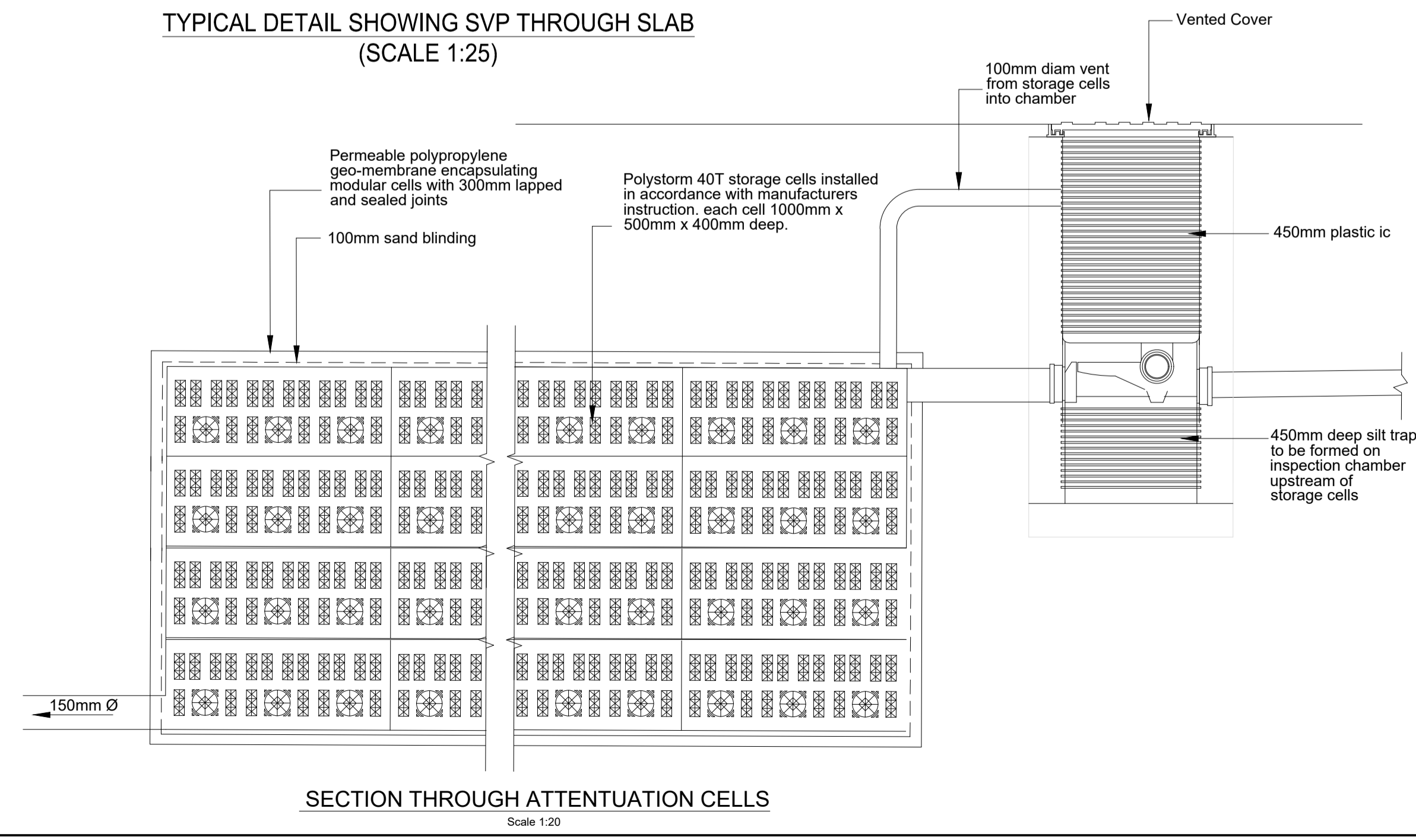
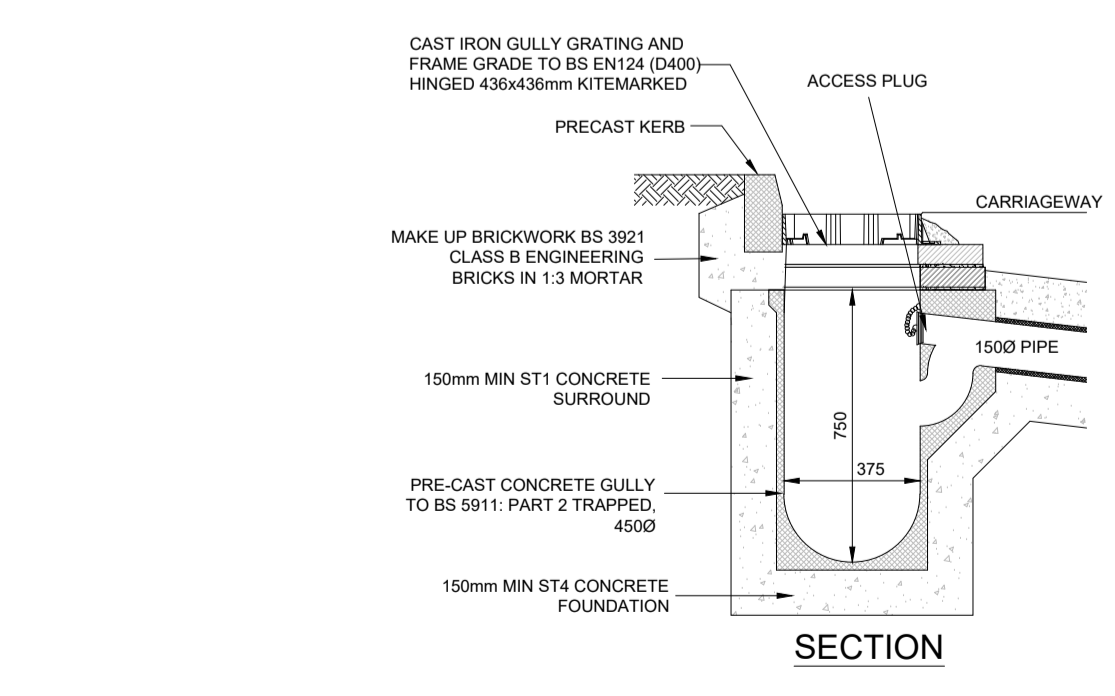


PIPE DIAMETER	NOMINAL SINGLE SIZED	GRADED
UP TO 100mm	10mm	
OVER 100mm TO 150mm	10mm or 14mm	5mm to 14mm
OVER 150mm TO 300mm	10mm, 14mm or 20mm	5mm to 14mm or 5mm to 20mm
OVER 300mm TO 500mm	14mm or 20mm	5mm to 14mm or 5mm to 20mm
OVER 500mm	14mm, 20mm or 40mm	5mm to 14mm or 5mm to 20mm or 5mm to 40mm

NOMINAL SIZE	LAD IN FIELDS	LAD IN LIGHT ROADS	LAD IN MAIN ROADS
CLASS 120 CLAYWARE PIPES (CLASS B BEDDING)			
100-150mm	0.6m - 8.0m	1.2m - 8.0m	1.2m - 8.0m
225mm	0.6m - 5.0m	1.2m - 5.0m	1.2m - 4.5m
400mm	0.6m - 4.5m	1.2m - 4.5m	1.2m - 4.0m
600mm	0.6m - 4.5m	1.2m - 4.5m	1.2m - 4.0m
CLASS M CONCRETE PIPES (CLASS S BEDDING)			
300mm	0.6m - 3.0m	1.2m - 3.0m	1.2m - 2.5m
450mm	0.6m - 3.5m	1.2m - 3.5m	1.2m - 2.5m
600mm	0.6m - 3.5m	1.2m - 3.5m	1.2m - 3.0m
THERMOPLASTIC PIPES (CLASS S BEDDING)			
100 - 300mm	0.6m - 7.0m	0.9m - 7.0m	0.9m - 7.0m

WHERE COVER IS LESS THAN THE ALLOWABLE DEPTH PIPES TO HAVE A CLASS 2 CONCRETE SURROUND OR CONCRETE COVER SLAB PROTECTION

CLASS 1 SULPHATE CONDITIONS	GEN3 OR ST4
ADAPTABLE STANDARDS AND AREAS SUBJECT TO HEAVY LOADING	GEN1 OR ST2
AREAS SUBJECT TO LIGHT LOADING eg PRIVATE DRIVES, SMALL CAR PARKS	
FOR BURIED CONCRETE EXPOSED TO SULPHATE CONDITIONS	
CLASS 2	FND 2
CLASS 3	FND 3
CLASS 4A	FND 4A
CLASS 4B	FND 4B



No.	Revision	Date	Drwn
Status: PRELIMINARY			
 Aire House, 12 Victoria Avenue Harrogate, HG1 1ED t: 01423 522 293 w: www.topping-engineers.com e: info@topping-engineers.com			
Client: Zaheer Hussain			
Project: Abbey Lane, Lundwood			
Drawing title: Drainage Details			
Drawn: RT	Chkd:	Date: FEB 21	Scale: As Shown @ A1
Contract No: 19294	Drig No: DR-C-0101	Revision:	P1