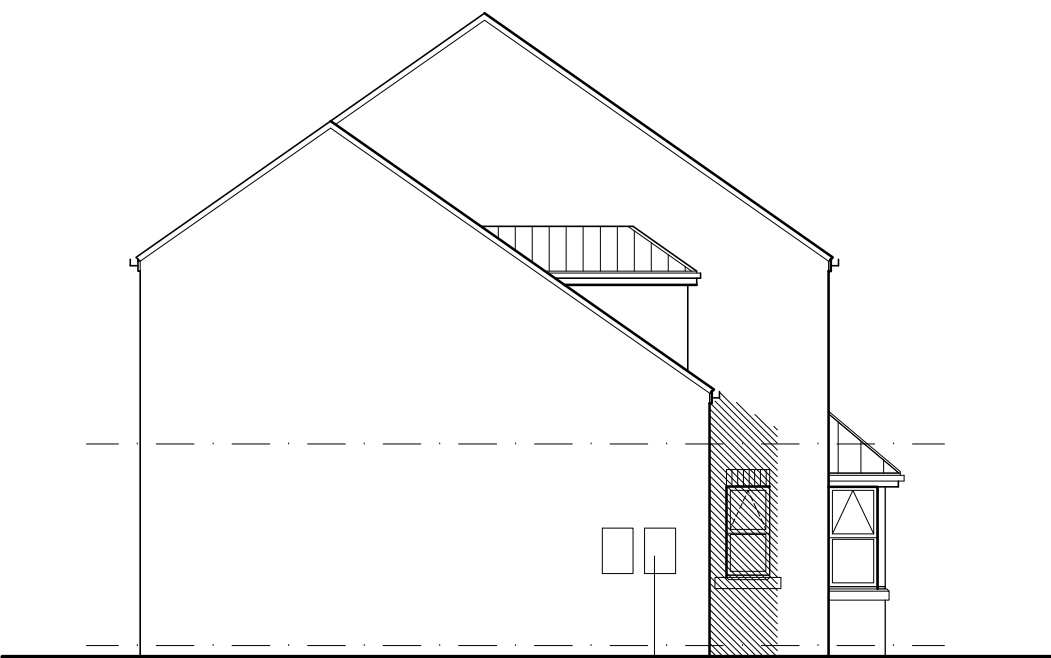
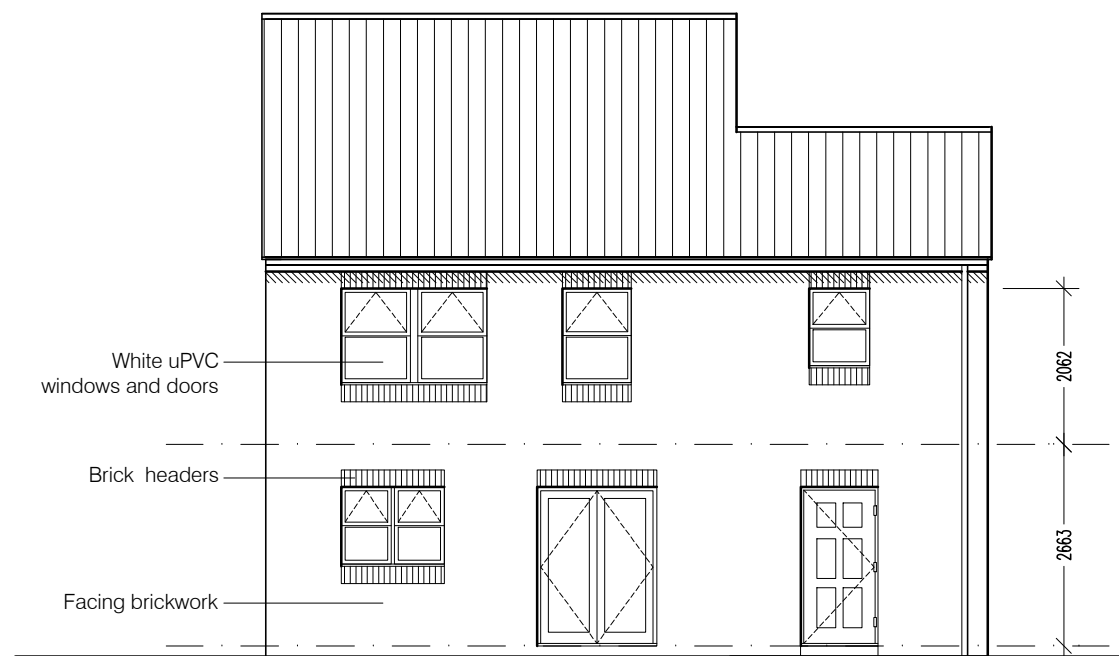




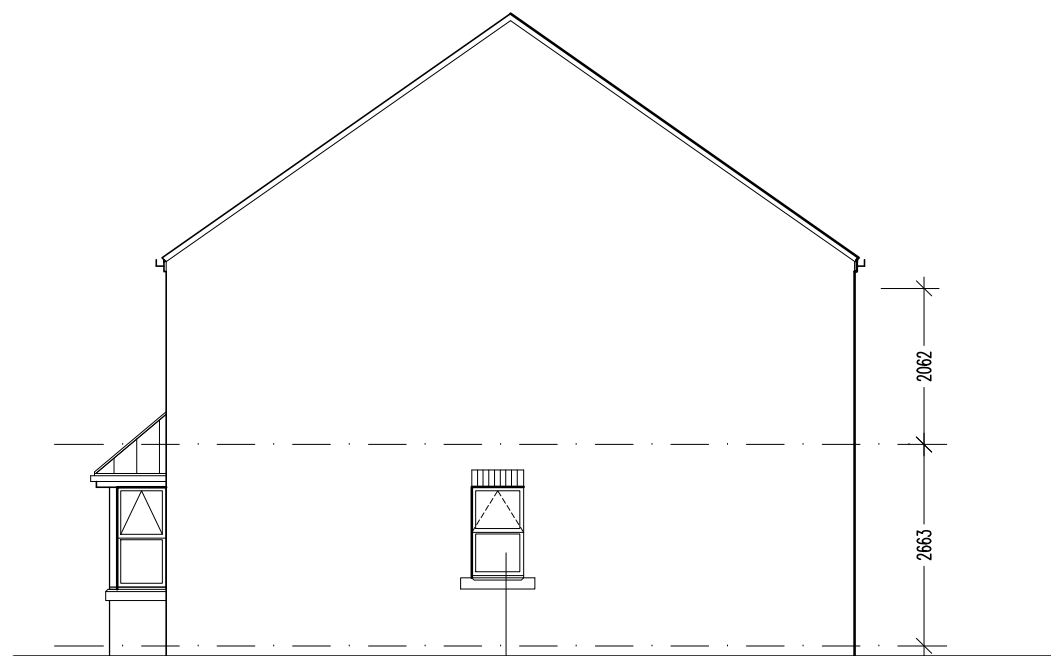
Front Elevation



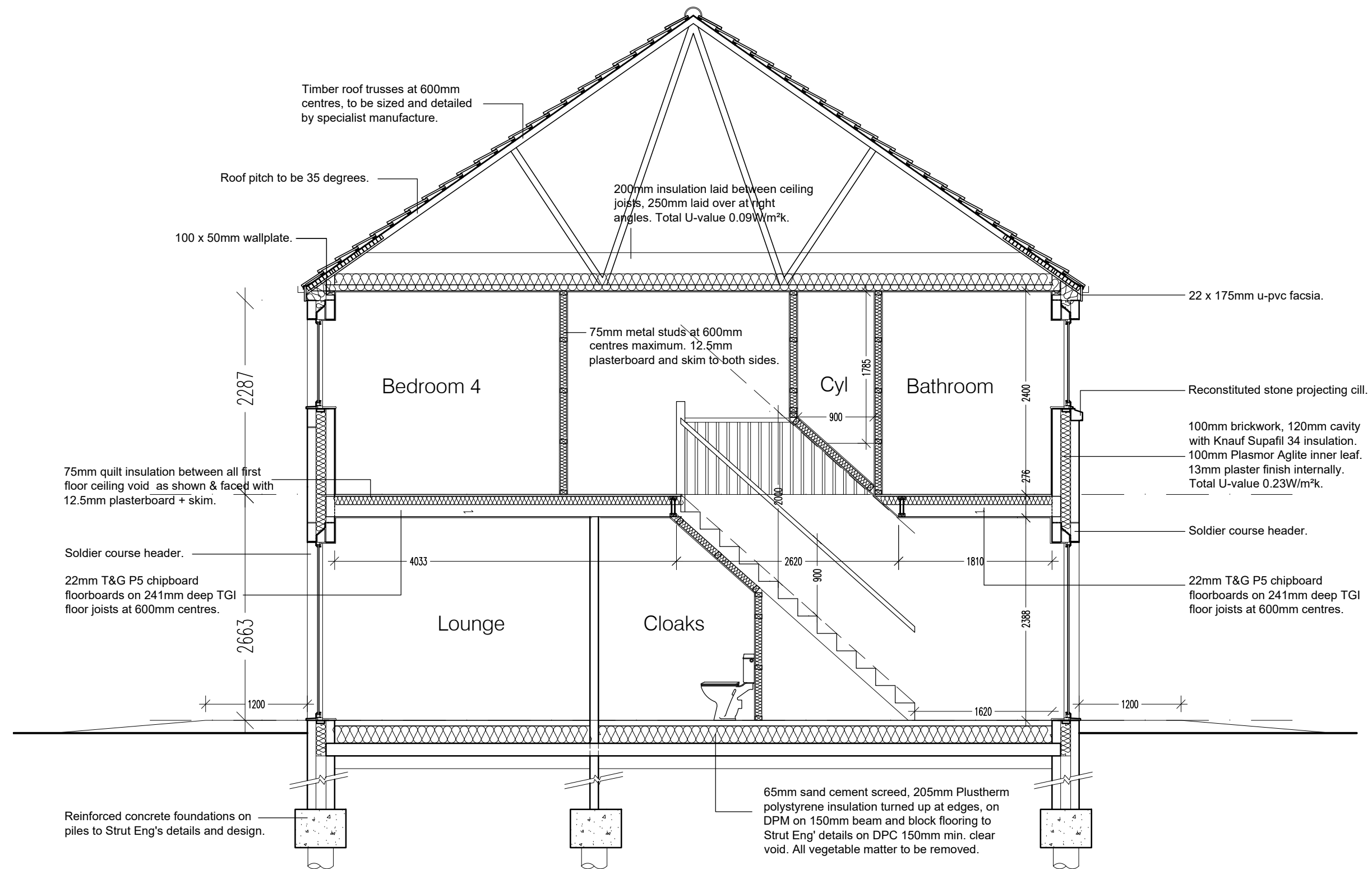
Side Elevation



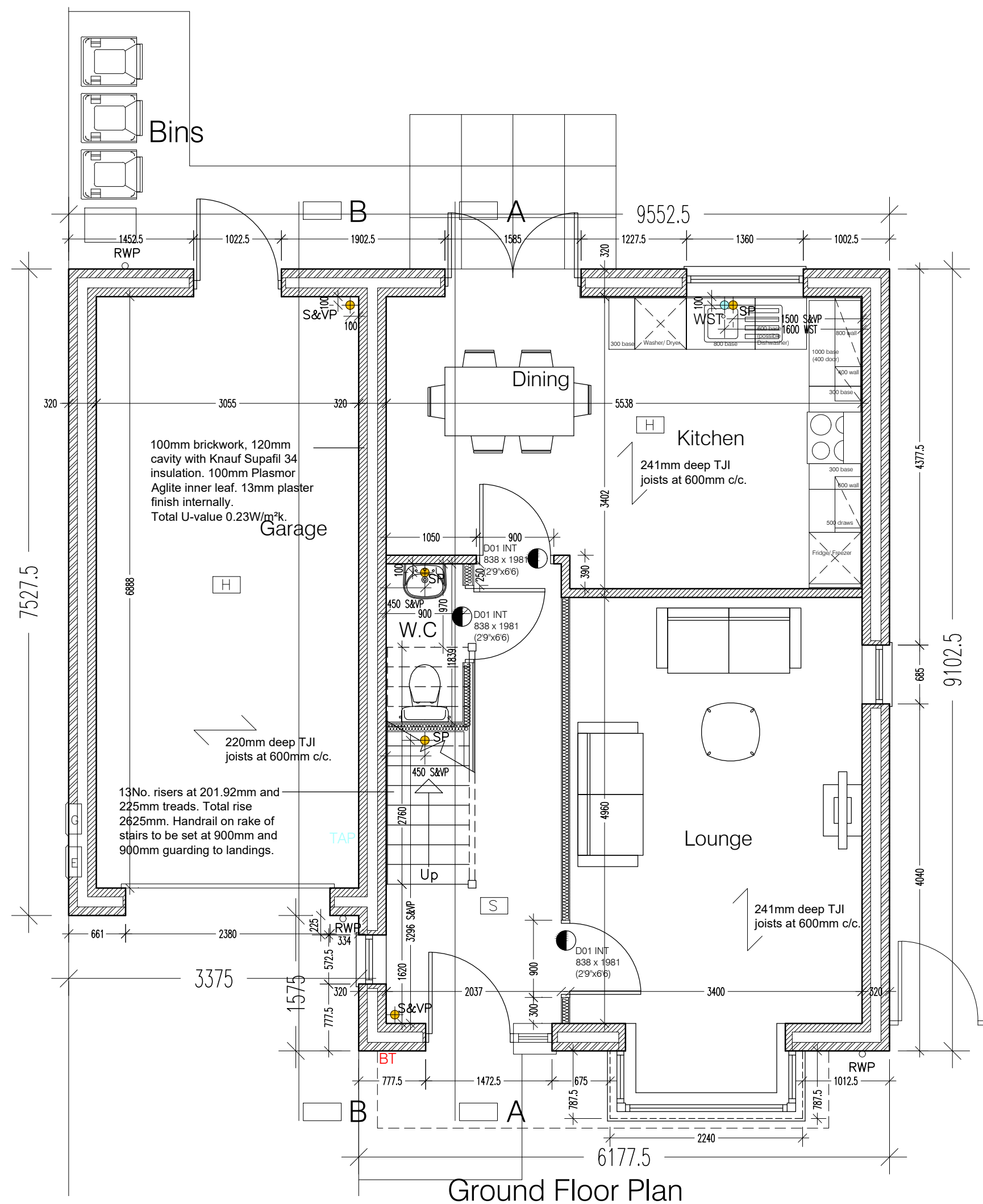
Rear Elevation



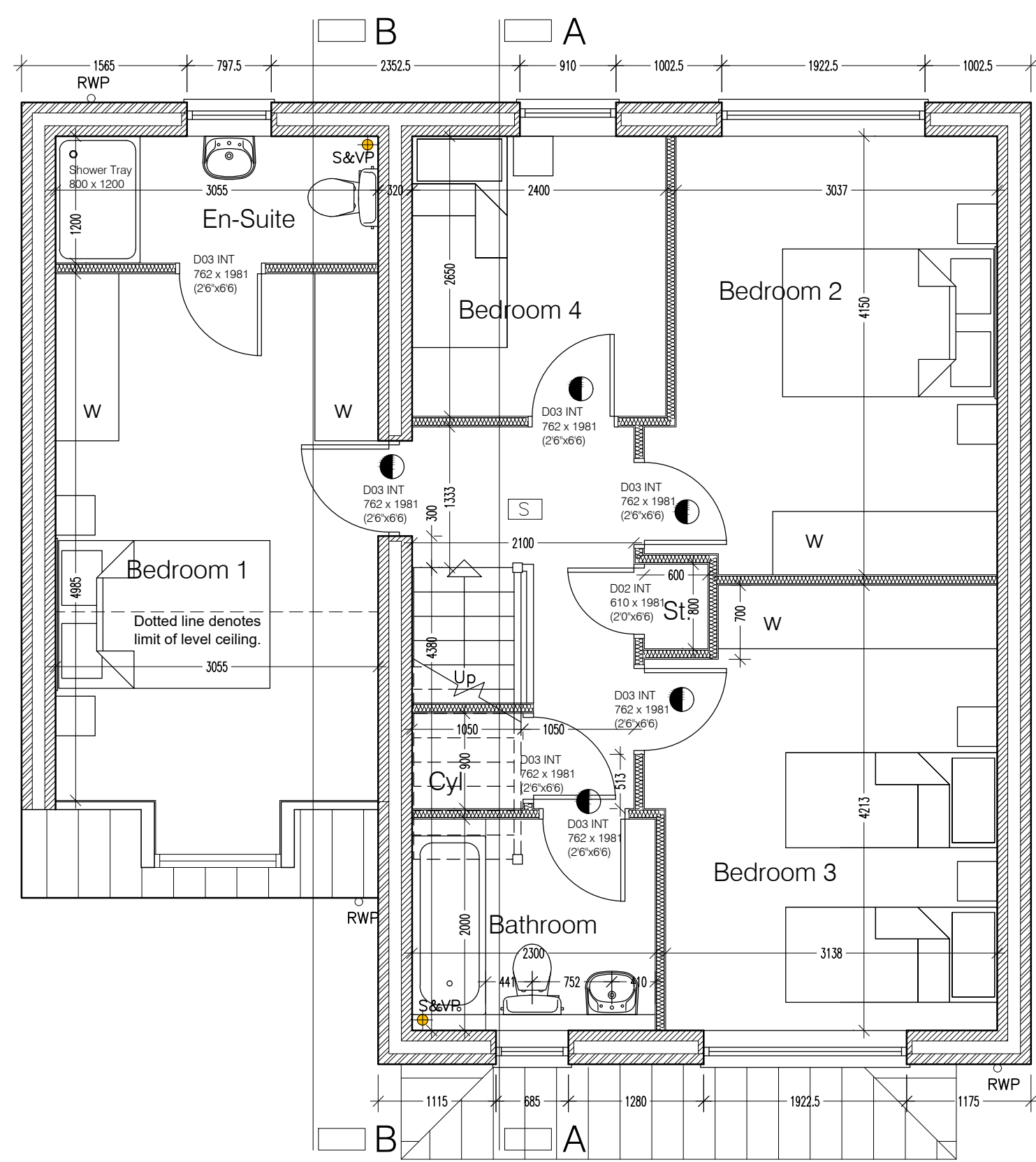
Side Elevation



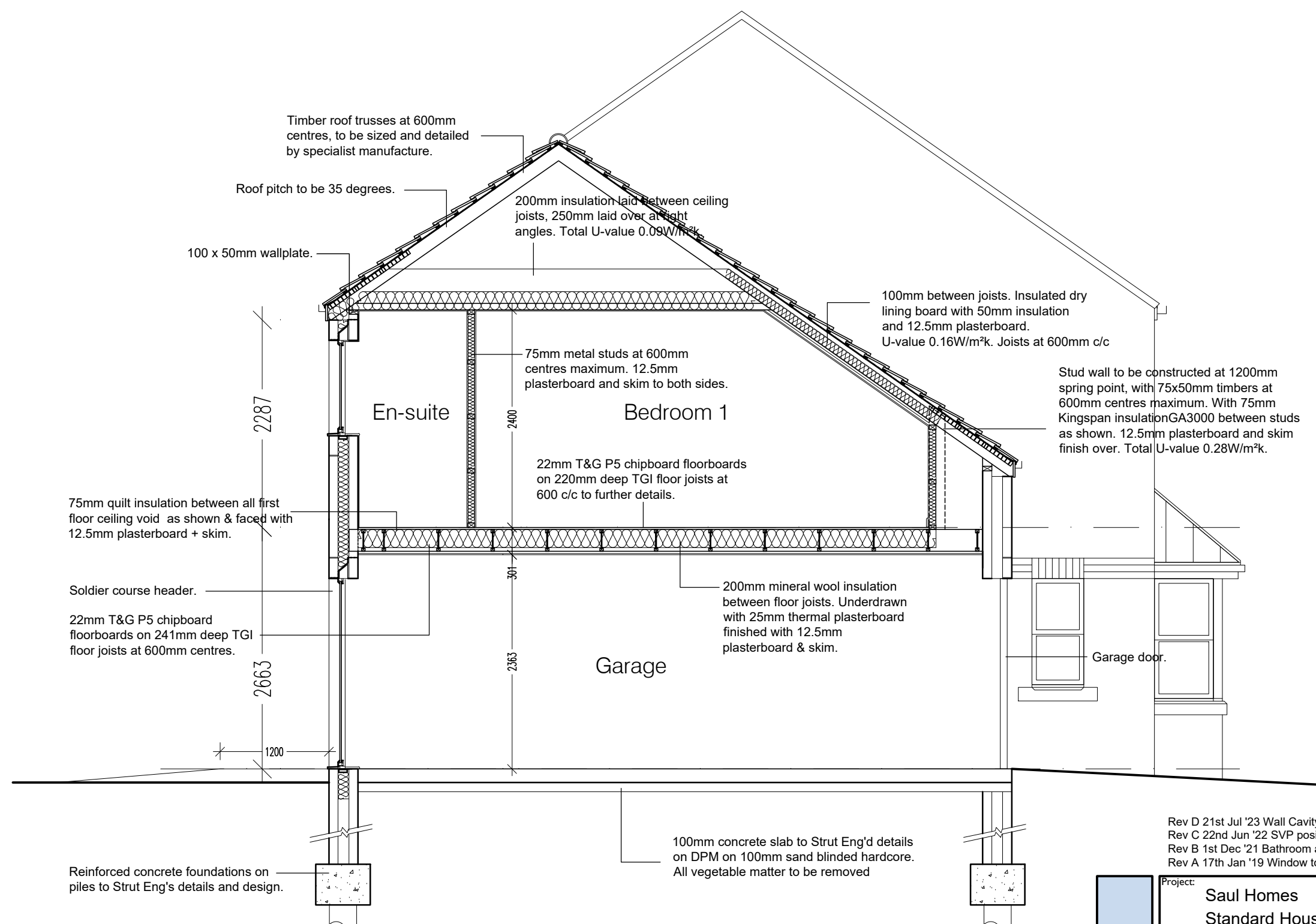
Section A-A



Ground Floor Plan



First Floor Plan



Section B-B

Type Chestnut - 4 Bedroom 2 storey

Residential Development at
Oakland Square, Hemsworth

Rev D 21st Jul '23 Wall Cavity updated to 120mm cavity
Rev C 22nd Jun '22 SVP positions amended and Gully removed
Rev B 1st Dec '21 Bathroom amended
Rev A 17th Jan '19 Window to bed 4 corrected in plan.

Project: Saul Homes
Standard House Types

Title: House Type 'Chestnut'
Ground and First Floor Plan
Elevations & Sections A-A & B-B

Scale: 1:50:100@A1 Drawn: PU Date: 10/17 Checked:

Drawing no: SH / ST / 10 Rev: D

Burntwood Office Park
Common Road
Brierley
Barnsley
S72 9ET
T: 01226 707090
F: 01226 707091
info@saulhomes.co.uk
www.saulhomes.co.uk

SAUL
HOMES