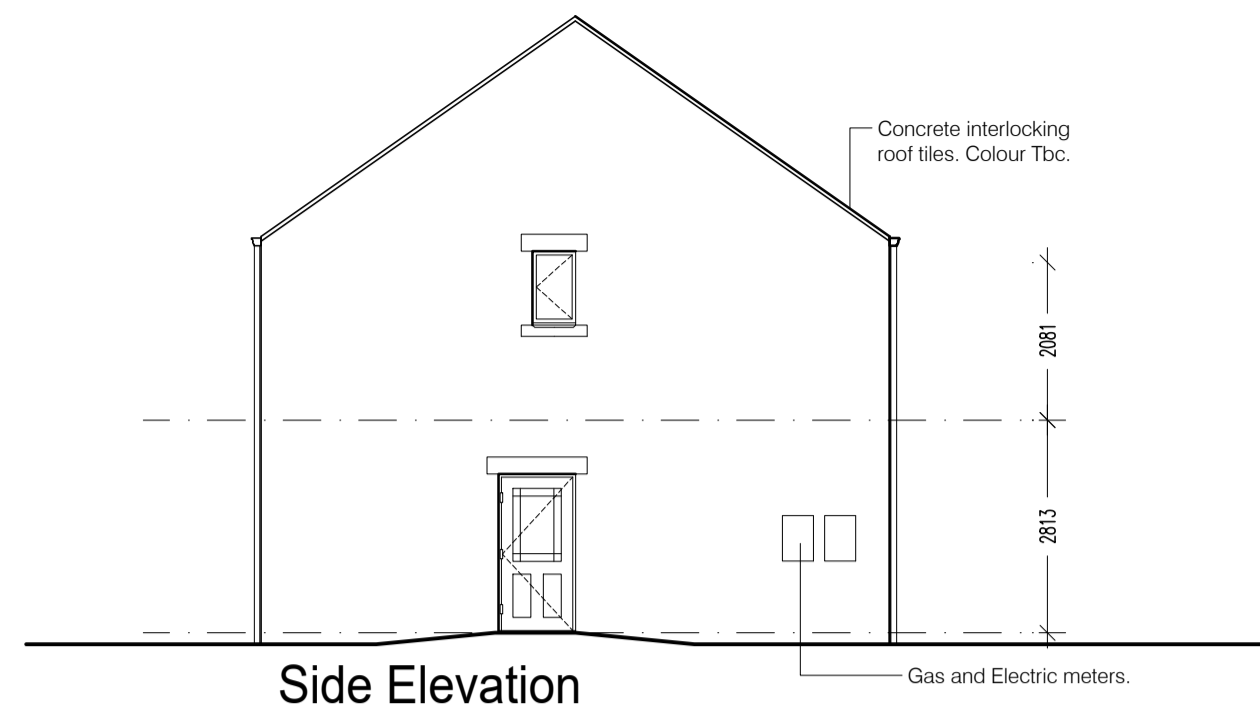




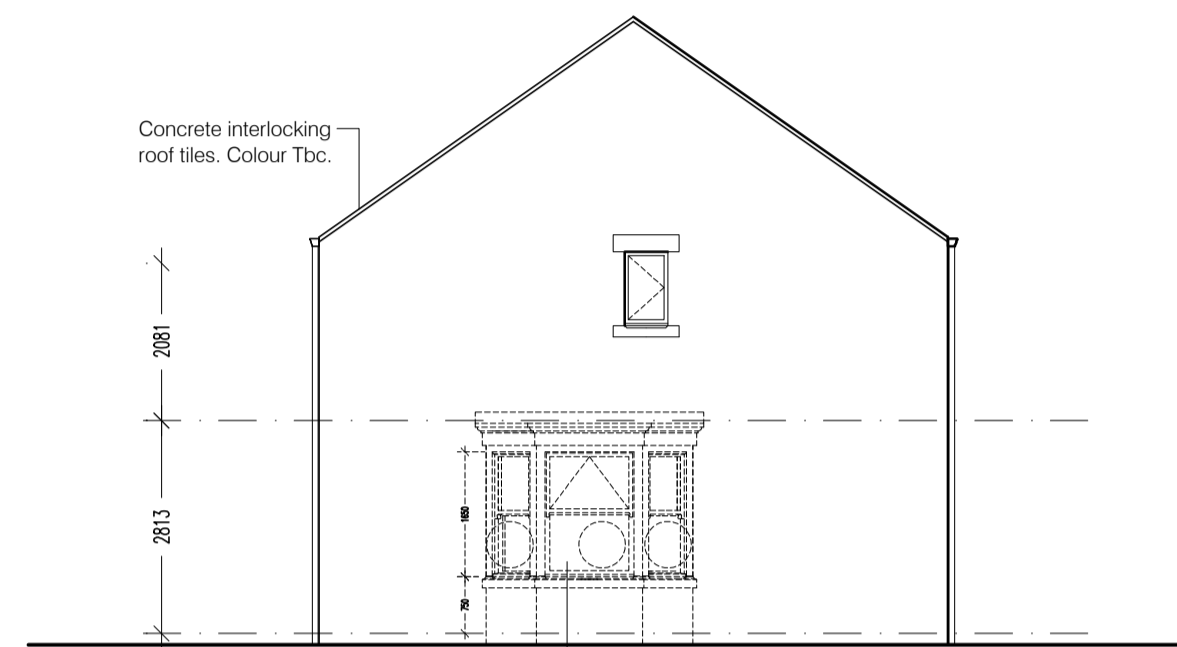
Front Elevation



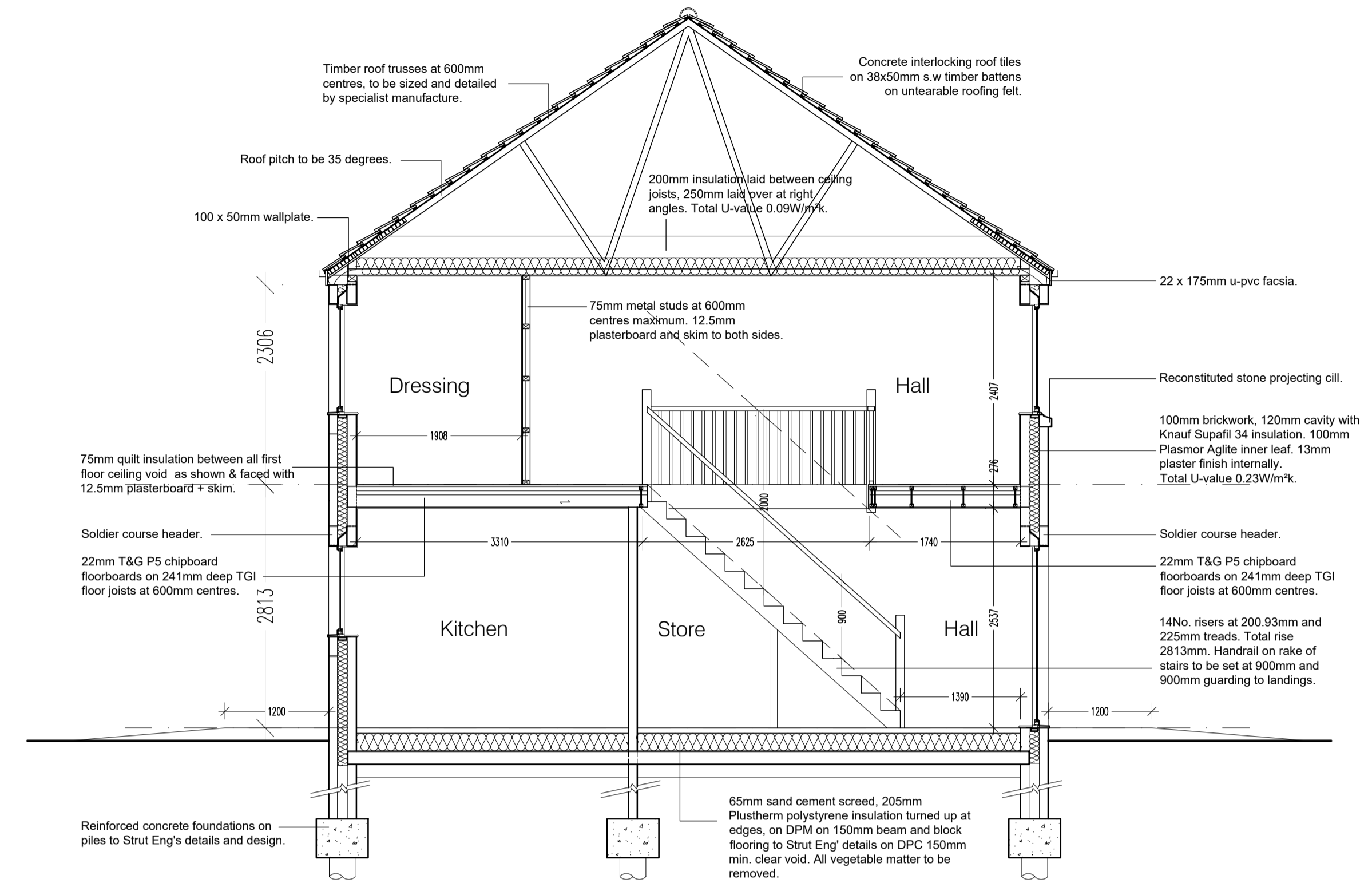
Side Elevation



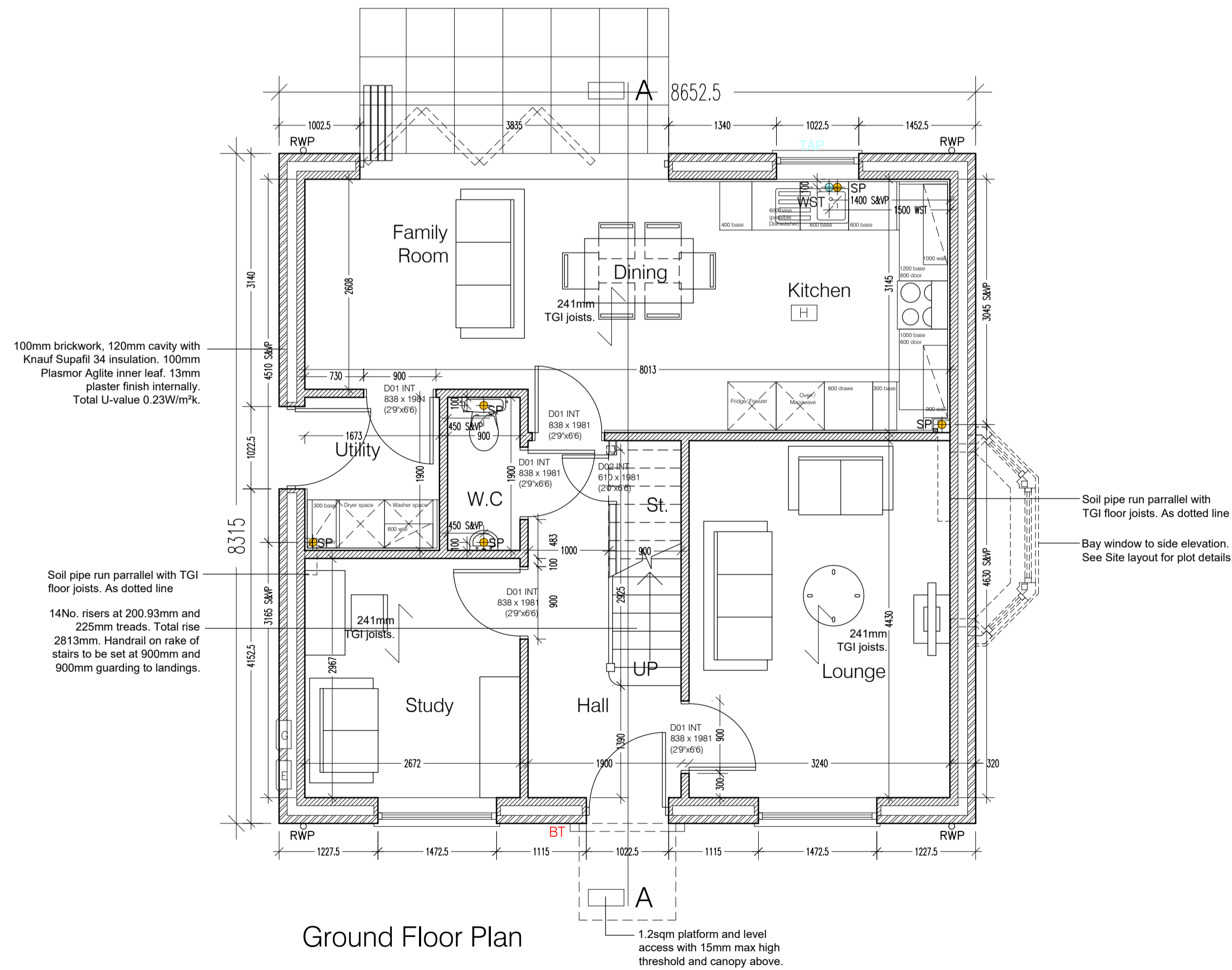
Rear Elevation



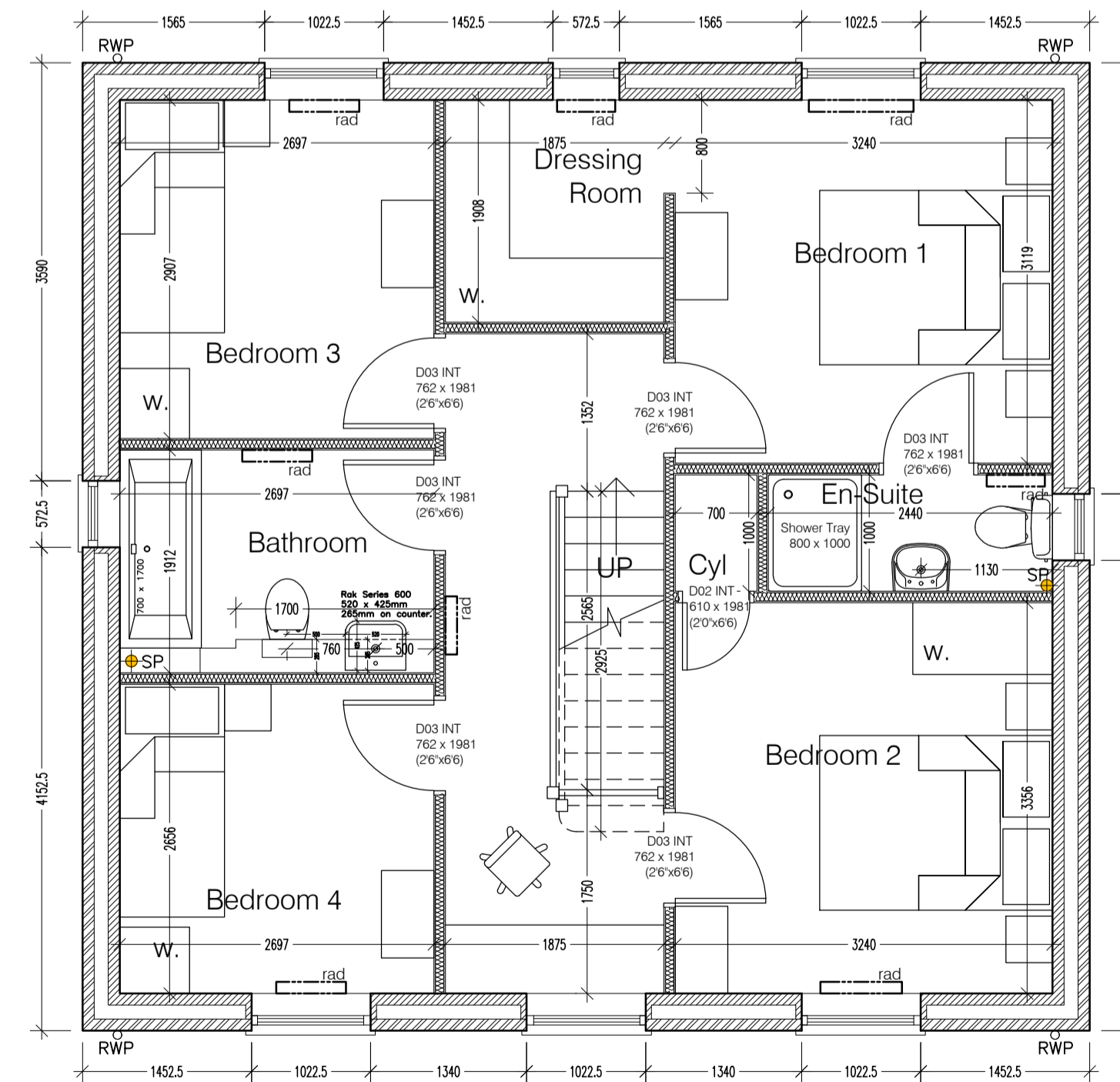
Side Elevation



Section A-A



Ground Floor Plan



First Floor Plan

Type Maple - 4 Bedroom 2 storey

Rev E 5th Dec '24 Stone head/cills added to gable windows
 Rev D 21st Jul '23 Wall Cavity updated to 120mm cavity
 Rev C 28th Sept '22 Bathroom sink amended to RAK.
 Rev B 22nd Jun '22 SVP positions amended and Gully removed.
 Rev A 22nd Oct '21 Bi-fold doors added to rear.

PROJECT: Saul Homes
 Standard House Types

TITLE: House Type 'Maple'
 Ground and First Floor Plan
 Elevations & Section A-A

SCALE: 1:50-100@A3 27mm PJ Date: 11 / 19 Checked:

Drawing no: SH / ST / 38 Rev: E

Burntwood Office Park
 Common Road
 Briarley
 Barnsley
 S72 9ET
 T: 01226 707090
 F: 01226 707091
 info@saulhomes.co.uk
 www.saulhomes.co.uk



Residential Development at
 Doncaster Road, Darfield, Barnsley