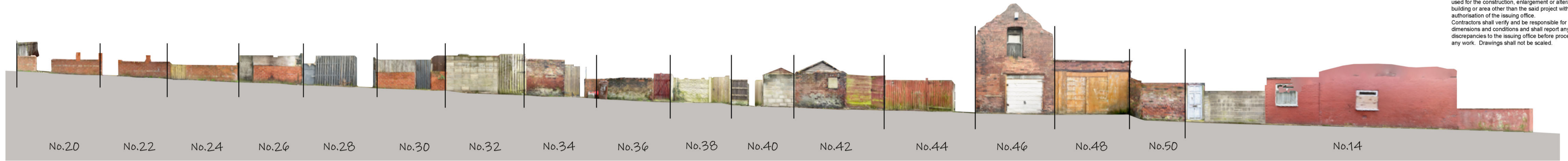


Notes

This Drawing is an instrument of service and shall remain the property of Align Property Partners Ltd copyright ©. It may not be reproduced or copied in any form. It shall not be used for the construction, enlargement or alteration of a building or area other than the said project without the authorisation of the issuing office. Contractors shall verify and be responsible for all dimensions and conditions and shall report any discrepancies to the issuing office before proceeding with any work. Drawings shall not be scaled.



Co-operative Street West - View E-E



KEY PLAN - NTS

Co-operative Street rear alleyway - View E-E			
House no.	Existing Condition	Proposed improvements	Notes
20	Approx 0.9m high brick wall with brick piers, space for timber access gate, gate missing	Remove brick piers and install new timber slatted fence with 300mm trellis to top. Wall height to increase to 2.1m. Install new 1.8m timber slatted gate	<b>General Note: applicable to all brick boundary walls; Walls in poor condition to be repaired where required and any burn marks/tarnishes to be steam cleaned</b>
22	Approx 0.9m high brick wall with brick piers, space for timber access gate, gate missing	Remove brick piers and install new timber slatted fence with 300mm trellis to top. Wall height to increase to 2.1m. Install new 1.8m timber gate	
24	Approx 0.9m high brick wall with brick piers, low timber access gate	Install new timber slatted fence with 300mm trellis to top. Wall height to increase to 2.1m. Install new 1.8m timber slatted gate	
26	Approx 0.9m high brick wall with brick piers and plywood boarding on top. Plywood boarding access gate	Install new timber slatted fence with 300mm trellis to top of wall. Wall height to increase to 2.1m. Remove plywood gate and replace with new 1.8m high timber slatted access gate	
28	Approx 1.8m high timber fence and boarding, timber access gate	Remove entirety of existing timber fencing to rear boundary. Provide new 1.8m high timber slatted fence with 300mm timber trellis to top fixed between new concrete posts, provide space for new access gate. Overall height 2.1m. Fit new 1.8m high timber slatted gate	
30	Approx 0.9m high brick wall with low fence on top and timber gate.	Remove existing fencing and replace with new timber slatted fence with 300mm trellis to top of wall. Wall height to increase to 2.1m. Remove existing gate and fit new timber gate	
32	Approx 2.2m high blockwork wall with timber gate	Clad over and fix new slatted timber boarding to existing blockwork to 2.2m high. Paint/stain existing timber gate	
34	Approx 2.2m high brickwork wall with timber gate - poor condition brickwork	Clad over and fix new slatted timber boarding to existing blockwork to 2.2m high. Remove existing gate and replace with new 1.8m high timber slatted access gate	
36	Approx 1.2m high brickwork wall with timber gate - poor condition brickwork	Remove existing brick feature detail to top of rear boundary wall. Install new timber slatted fence above with 300mm trellis to top. Wall height to increase to 2.1m. Paint/stain existing timber gate	
38	Stone effect cladding approx 1.8m high with timber gate	Retain existing wall construction and fix new timber slatted fence with 300mm trellis above. Wall height to increase to 2.1m. Paint/stain existing timber gate	
40	Part timber fence 1.8m high and part 2.0m high blockwork wall with timber gate	Remove existing timber fence and replace with new 1.8m high timber slatted fence with 300mm timber trellis to top fixed between new concrete posts; provide space for new access gate. Fit new 1.8m high timber gate. Clad over existing blockwork to full height with slatted timber boarding	
42	Part timber fencing 1.8m high with timber gate, apart 1.8m high brickwork wall - poor condition brickwork	Clad over and fix new slatted timber boarding to existing brickwork to full height. Paint/stain existing timber gate	
44	Approx. 1.8m high timber fence with timber access gate	Remove entirety of existing rear boundary. Provide new 1.8m high timber slatted fence with 300mm timber trellis to top fixed to new concrete posts and gravel boards, with new timber access gate. Overall height 2.1m	
46	Rear elevation of 2 storey brickwork outhouse with garage door and space for access gate	Infill existing window opening at first floor with vertical timber boarding. Allow for new doors	
48	Rear elevation of brickwork garage with garage door timber boarding	Existing boundary treatment retained. Allow for new doors	
50	Approx. 2m high brickwork wall with timber "door" used as access gate	Retain existing brick boundary wall. Remove door and replace with new 1.8m high timber gate	
14	Approx. 2m high blockwork wall	Clad over with slatted timber boarding to full height	

P2	Boundary wall suggested improvement updates to reflect BCC/Consultant/SDG officer review - site walkover 08.04.24	18/04/24 JA	18/04/24 BG	18/04/24 MR
P1	FIRST ISSUE	13/03/24 JA	13/03/24 BG	13/03/24 MR
Ver:	Details	Author & Date	Checked & Date	Approved & Date

**align** PROPERTY PARTNERS

White Rose House (2nd Floor), Northallerton Business Park,  
Thurston Road, Northallerton, DL5 2NA Tel: 01609 797373

Client:  
**Barnsley Metropolitan Borough Council**

Project name:  
**Goldthorpe Public Realm**

Drawing Title:  
**Alleyway improvements  
Alleyway 3 - Co-operative Street**

Purpose:  
**Preliminary**

Scale	Drawn	Checked	Approved
NTS	JA	BG	MR
Original Size	Date	Date	Date
A1	MARCH '24	MARCH '24	MARCH '24

Drawing Number:  
**BC2301-APP-ZZ-DR-A-000112**

Version:  
**P2**