

External walls

External walls are of a durable one-piece construction with high-performance, low-maintenance plastisol-coated galvanised steel cladding to offer protection against fire, extreme weather and accidental damage. Internally, the walls are of vinyl-faced plasterboard, providing a wipe-clean finish.

Floor

The floor has a rigid galvanised steel frame and underfloor thermal insulation of foil-faced rigid polymer slabs, which offers a sturdy and robust feel and also prevents infestation. The suspended floor is completely integrated into the structure of the building. A variety of floor coverings are available, depending on the purpose of the building, including hard-wearing vinyl, carpeting or chequerplate*.

Roof

Outstanding insulation is provided by the construction of the roof. The roof deck is of one-piece construction and is impact resistant. It is covered with solar-reflective, profiled plastisol-coated galvanised steel to reduce heat gain. Internally, the polyester-coated galvanised steel ceiling is designed to prevent condensation problems and has a low-maintenance finish.

Doors and windows

Steel-faced doors have an insulating core that minimises heat loss. The anodised aluminium frame also incorporates draughtproof weather seals. The windows have PVC-U frames and are double glazed with low energy glass for optimum thermal performance. Draught and condensation problems are minimised by effective weather seals and the low thermal conductivity of the window frame and glazing materials. Windows in critical locations are glazed with toughened safety glass as standard with a variety of other glazing available as an option.* Titan buildings offer protection against theft and vandalism, with a wide range of security options.

Building layout

Titan buildings can be linked to form larger complexes or stacked to form two-storey buildings. This flexibility can produce an open plan space or individual offices through the use of partition walls, vision panels and doors.

Foundations

Titan buildings can be sited on simple pad foundations or level hard-standing capable of taking the total weight of the structure and the imposed loads. Portakabin staff will provide advice on the foundation loads and positions for single and two-storey buildings.

Structural integrity

Peace of mind is guaranteed by the high levels of all-round performance achieved by the Titan building series. It has been independently assessed by the British Board of Agrément (BBA) and awarded a BBA certificate confirming that it meets the requirements of The Building Regulations (England and Wales), The Building Standards (Scotland) Regulations and other permanent building standards and codes of practice. The Titan building series has been designed and manufactured in the UK under a Quality Management System meeting the requirements of ISO 9001. In addition, Portakabin also offers a 5-year product and a 30-year structural warranty on all new Titan buildings*.

Design loads

Floor: 3.00kN/m²

Roof: 0.75kN/m²

Thermal insulation

Walls, doors and roof are insulated with environmentally friendly CFC-free Envirofoam, a rigid polymer insulation material that is lightweight and yet enhances long-life structural strength and ensures an energy-efficient building.



Insulation values

Buildings comply with minimal elemental U-values in accordance with The Building Regulations (England and Wales) and The Building Standards (Scotland) Regulations by the carbon emissions calculation method. Elemental U-values (W/m²K)

Floor: 0.25 Walls: 0.34 Roof: 0.24

Fire performance

Fire-engineered construction ensures safe fire performance. Non-combustible materials are used for all external cladding and internal lining of walls and ceilings, minimising the potential fire load. Walls and ceilings have Class O surfaces, roof decks have an FAA rating. The walls (from inside) have a one hour fire resistance and the combined roof and floor assembly (from underside, two-storey buildings) have a half hour fire resistance and the underfloor insulation slabs have a Class 1 surface spread of flame rating.

Climate control

A variety of heating, ventilation and air-conditioning systems can be provided to meet comfort requirements.

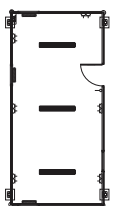
Transport and handling

Titan buildings are transported by lorry. Crane handling is facilitated by integral lifting points and the telescopic Lodastrut leg system enables single storey buildings to be positioned using the optional jack. Portakabin staff will provide full advice on the procedure.

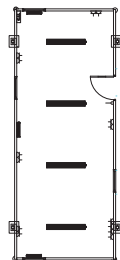
Porta, Portakabin, Ultima and Titan are registered trademarks. © Portakabin 2018.

Portakabin Limited, Yorkon House, New Lane, Huntington, York, YO32 9PT.

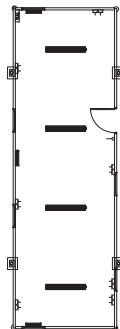
Registered company number 685303. 205/05/18.



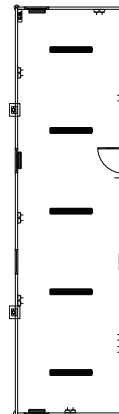
TN084
29.45m²



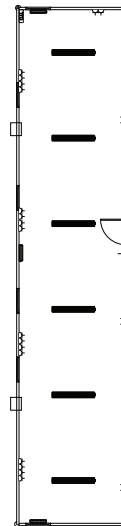
TN104
35.40m²



TN124
44.32m²



TN154
53.24m²



TN184
66.61m²

Dimensions	TN084	TN104	TN124	TN154	TN184
External length (m)	8.420	10.014	12.414	14.814	18.414
External width (m)	4.214	4.214	4.214	4.214	4.214
External height (m)* - without legs fitted	2.904	2.904	2.904	2.904	2.904
External height (m)* - with legs fitted	2.975	2.975	2.975	2.975	2.975
Leg centres - length (m)	7.200	7.200	7.200	7.200	9.600
Leg centres - width (m)	4.034	4.034	4.034	4.034	4.034
Internal length (m)	7.926	9.526	11.926	14.326	17.926
Internal width (m)	3.716	3.716	3.716	3.716	3.716
Ceiling height (m)	2.500	2.500	2.500	2.500	2.500
Foundation to floor level (m)*- without legs fitted	0.240	0.240	0.240	0.240	0.240
Foundation to floor level (m)*- with legs fitted	0.309	0.309	0.309	0.309	0.309
Floor area (m ²)	29.45	35.40	44.32	53.24	66.61
Lifting dimensions - Minimum sling leg length (m) (90° between opposite sling legs)	6.000	6.000	6.000	6.000	7.500
Lifting dimensions - Minimum hook height (m)* (90° between opposite sling legs)	7.300	7.300	7.300	7.300	8.300

*Lodastrut legs fully retracted.