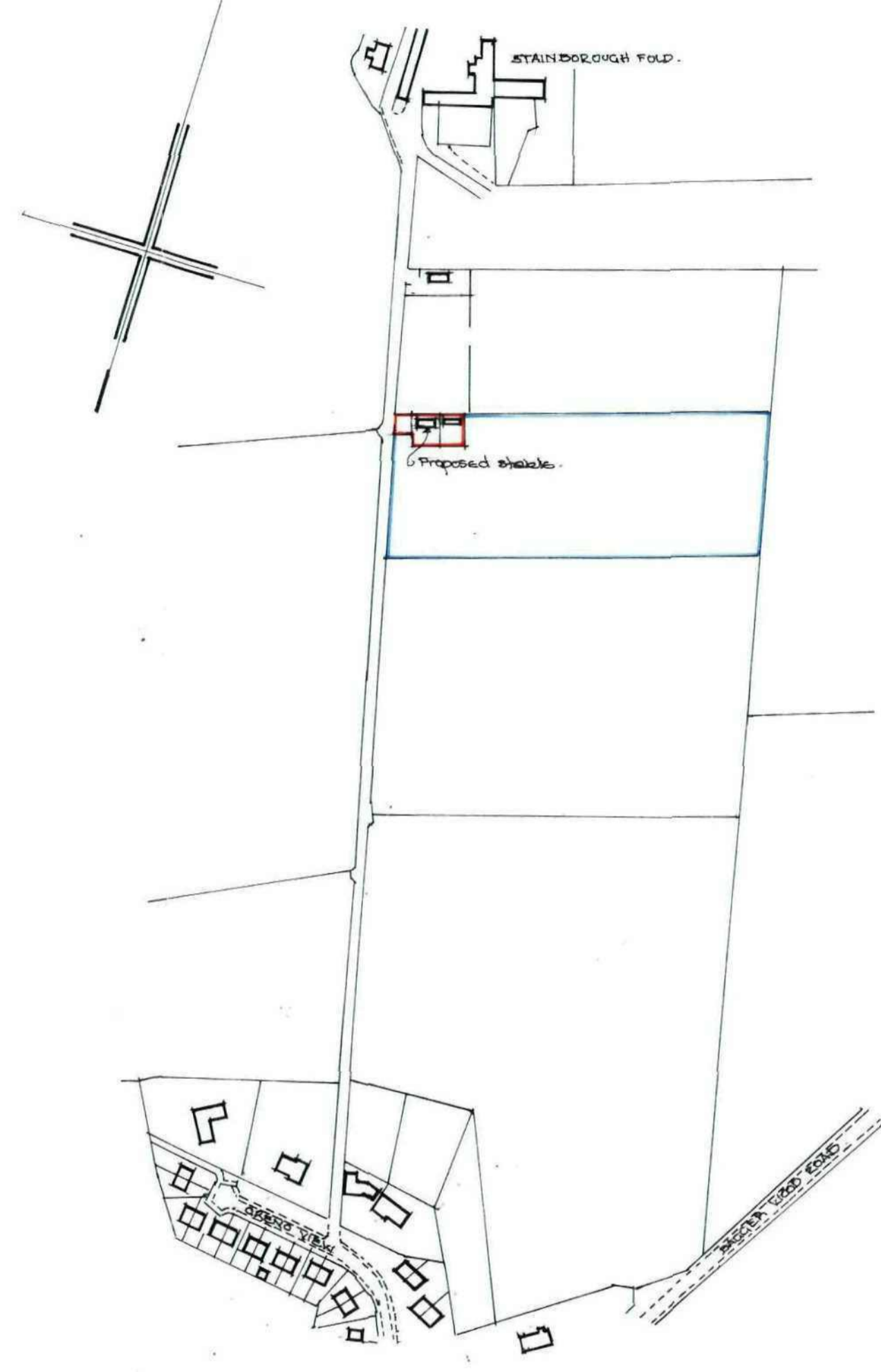
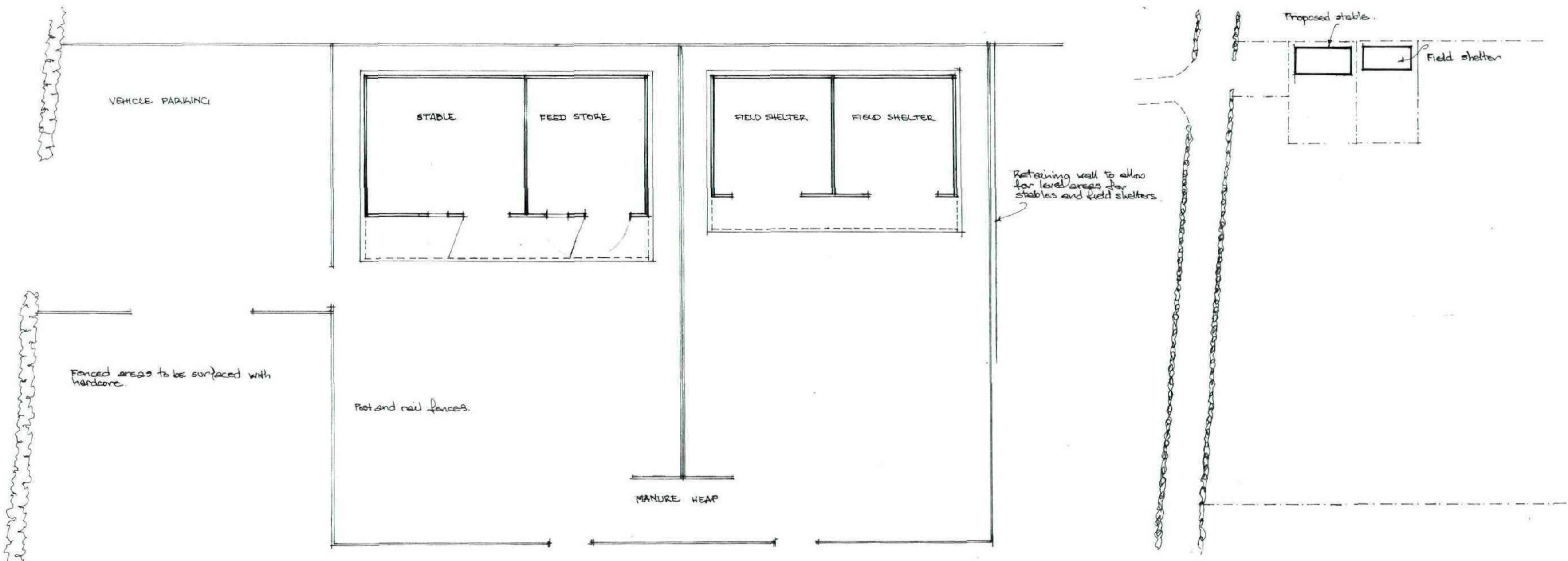


Form stables in 68 x 38mm timber studs at 600mm centres lined externally with treated timber shiplap boarding. Fix black Onduline corrugated sheeting to roof. Single course of Class 1 brickwork to partition and under partition wall. Concrete base on hardcore subfill.

Field shelter formed with timber studwork lined externally with treated timber shiplap boarding with black Onduline corrugated sheeting to roof. Field shelter on 100 x 100 x 4mm steel skids with towing points at either end. Shelter to be placed on concrete base.



LOCATION PLAN
Scale 1:2500

MRS. A. RICHARDSON
PROPOSED STABLES
OFF GRENNO VIEW
HOOD GREEN, BARNSELY

SCALE 1:100

AUGUST 2012.

