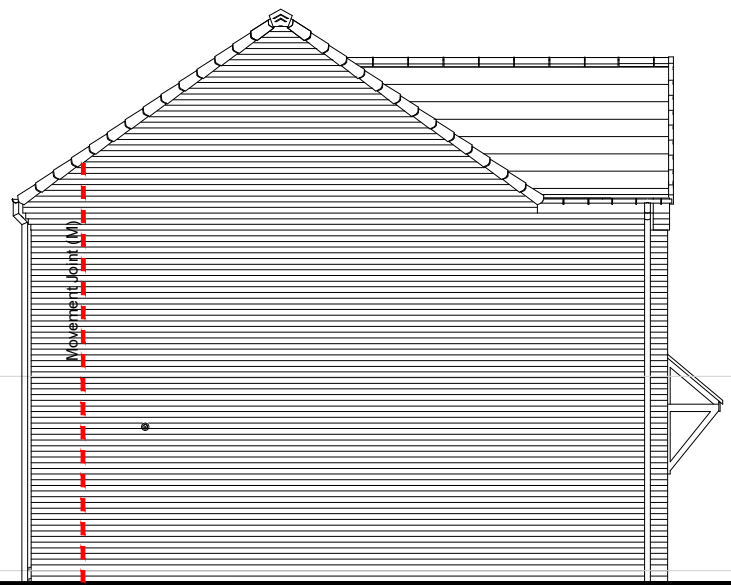


- FEATURES**
- \* Flat profile roof tiles.
  - \* Dry verge detail.
  - \* UPVC fascia at eaves, with brick corbel to gable in same brick as main elevation
  - \* Brick soldier course heads.
  - \* Plain side hung casement windows.
  - \* Brick soldier course cills.
  - \* Six panel main entrance door, with lean to canopy over on "gallows brackets"
  - \* Nine panel garage door
  - \* Dark brick below DPC.



FRONT ELEVATION

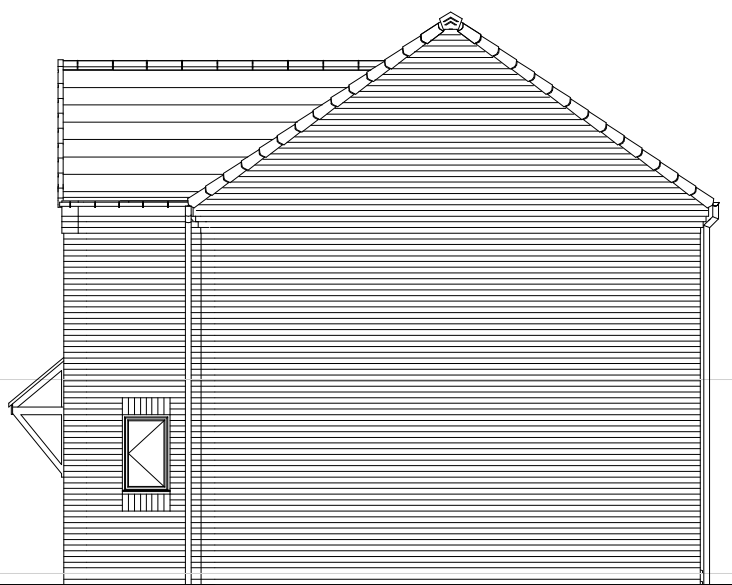


SIDE ELEVATION

For details of blockwork strengths, movement joints and lintels refer to structural engineers specification



REAR ELEVATION



SIDE ELEVATION

C01	Issued for Construction	27.05.21
P01	Initial issue	22.04.21
Rev.	Comments	Date

**gleeson**

Gleeson Homes (Head Office)  
Unit 5, Europa Court | Sheffield Business Park | Sheffield |  
South Yorkshire | S9 1XE

01142 612900

www.gleesonhomes.co.uk

Project:  
**354 House Type**  
Urban

Title:  
**Elevations**

Scale:	Date:	Drawn:	Checked:
1:100 @ A3	22.04.21	OS	GE

Drawing No:	Revision:
21-354-U-0301	C01