

Key Plan

1:500

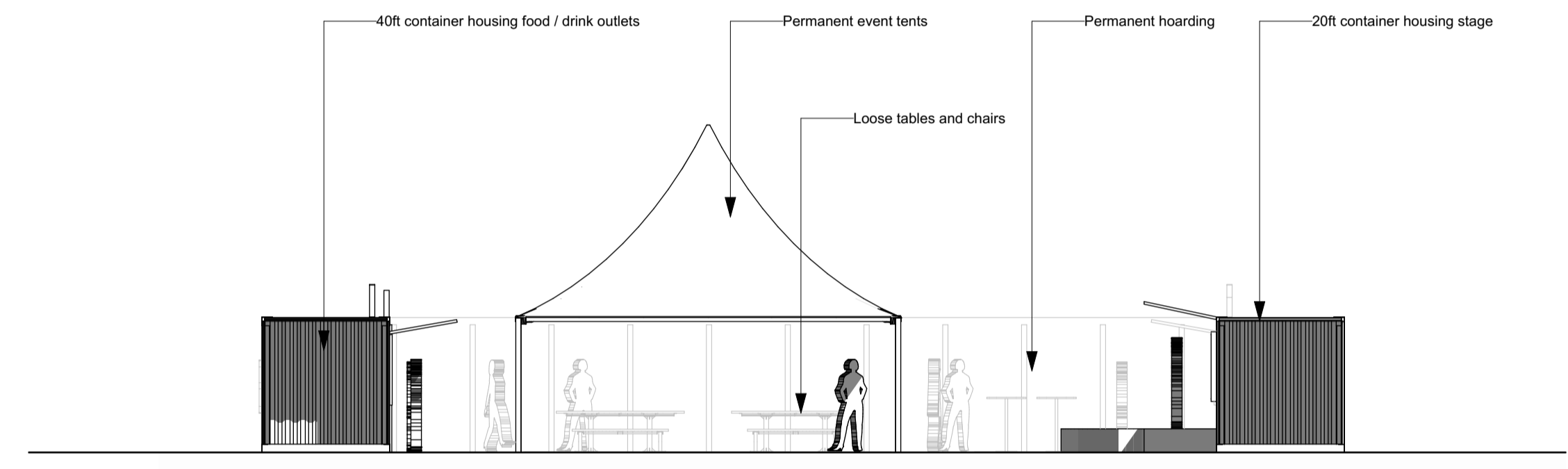
NOTES
 Check all dimensions on site. Do not scale from this drawing. Report any discrepancies and omissions to HLM Architects. This Drawing is Copyright ©

DESIGN/SKETCH DESIGN
 Unless stated otherwise, the designs shown are subject to detailed site survey, investigations, and legal definition, the CDM Regulations, and the comments and / or approval of the various relevant Local Authority Officers, Statutory Undertakers, Fire Officers, Engineers and the like. They are copyright, project specific and confidential and no part is to be used or copied in any way without the express prior consent of HLM Architects.

PHOTOCOPIED/SCANNED INFORMATION
 NB This drawing is based on photocopied / scanned information liable to distortion in scale.

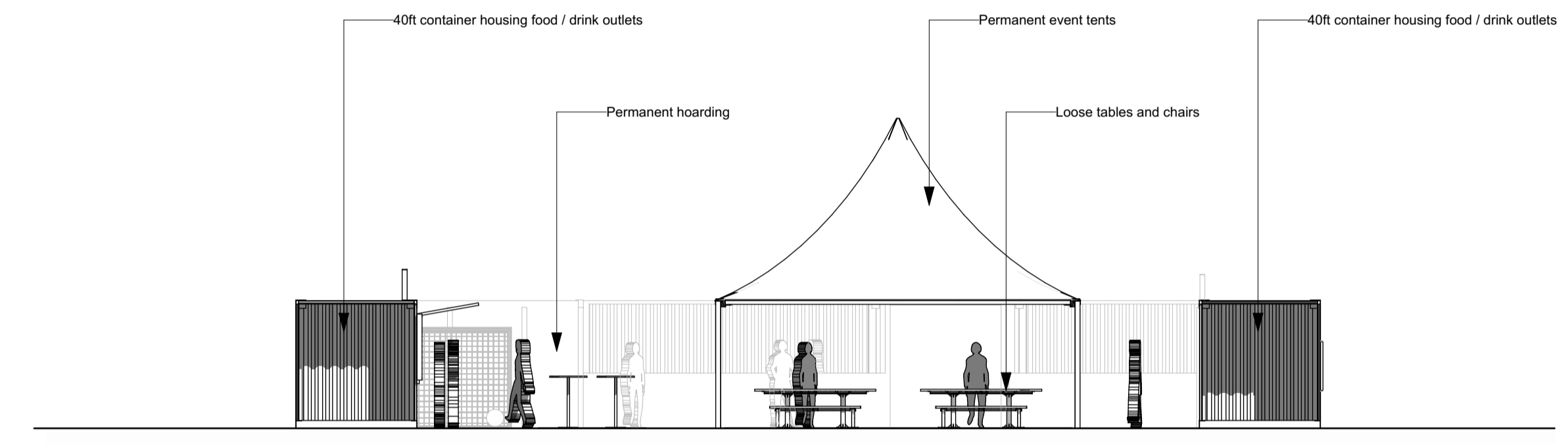
AREA CALCULATIONS
 NB The areas shown are approximate only and have been measured off preliminary drawings as the likely areas at the current state of design using the stated option from the Code of Measuring Practice, 4th edition. RICS/SIVA. These may be affected by future design development and construction tolerances, or the result of surveys for existing buildings. Take account of these factors before planning any financial or property development purpose or strategy and seek confirmation of latest areas before decision making.

3RD-PARTY INFORMATION
 NB This drawing includes information provided by independent surveyors and/or consultants, to whom all queries shall be made. HLM Architects can accept no liability for its content or accuracy.



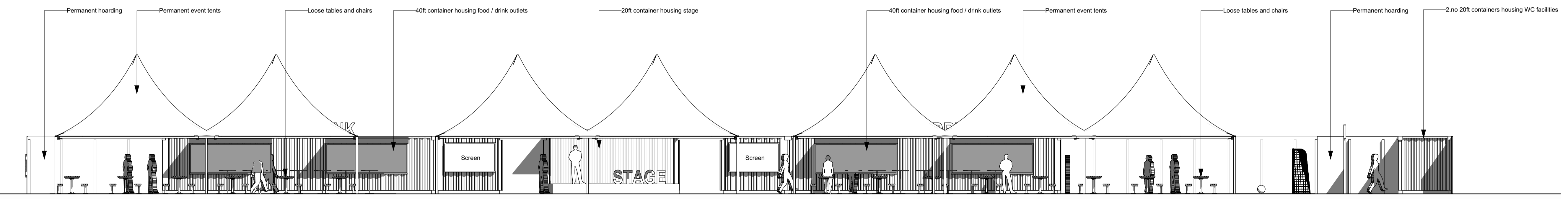
Section S-01

1:100



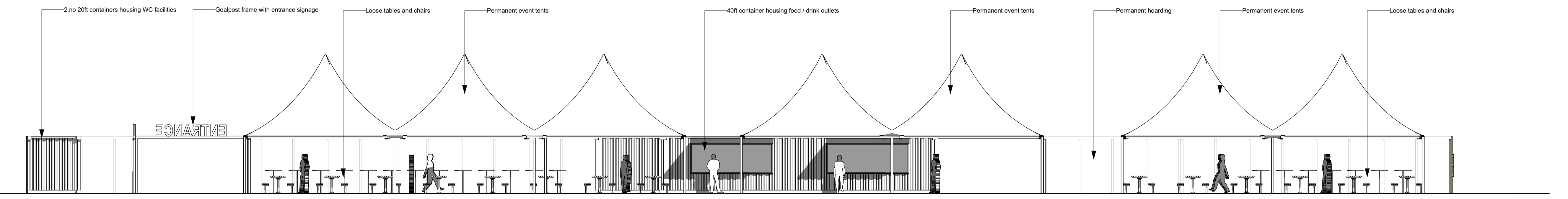
Section S-02

1:100



Section S-03

1:100



Section S-04

1:100

P03 Issue for Planning Application	24.01.25	JH	NB
P02 Amended to Comments Received	21.01.25	JH	NB
P01 Issue for Review and Comment	16.01.25	JH	NB
Rev Description	Date	By	Chk
Revisions	Suitability		
Project	S0 - for Information		

Fanzone

Client
Barnsley FC

Title
Proposed Internal Elevations

Drawing No.	Revision
BFC-HLM-XX-00-D-A-0007	P01

Scale	Drawn
1:100 @A1	JH
Date	Checked
16 January, 2025	NB



© HLM Architects
 The Ruskin Building
 Tudor Square
 Sheffield S1 2LA

www.hlmarchitects.com
 T. +44 (0) 114 263 9600
 F. +44 (0) 114 263 9650
 sheffield@hlmarchitects.com