

LANDSCAPE SPECIFICATION

NOTE: All soft landscape works to be carried out in accordance with BS4428:1989.

SUBSOIL

Subsoil should be broken up to relieve compaction and aid drainage prior to topsoiling to the following depths:
 - For light and non cohesive subsoils: 300mm
 - For stiff clay and cohesive subsoils: 450mm
 Immediately before spreading topsoil, remove stones larger than 50mm.

TOPSOIL

To be supplied and spread by the main contractor to the approval of the Landscape contractor, in accordance with BS 3882:2007. To be a natural sandy loam, of medium texture, with a pH between 5.5 and 7.8, not more than slightly stony and free of pernicious weeds. Subsoil to be well broken up prior to top-soiling to relieve compaction. Topsoil depths should be:
 Areas for Ornamental Shrub Planting: minimum 450mm
 Areas for grass: minimum 150mm

CULTIVATION

Weeds to be prevented from seeding or becoming established by applying a suitable herbicide and allowing the correct time to elapse, as directed by the manufacturer. Compacted soil to be broken up to a depth of 100mm, with any stones, grass tufts or rubbish larger than 50mm in any direction to be removed, leaving a regular and even surface. Suitable slow release fertiliser to be supplied and spread @ 50g/m² to all planted areas.

CLIMATIC CONDITIONS

Topsoiling should be carried out in the driest conditions possible. Cultivation to be carried out when the soil is moist, friable and not waterlogged or frozen. Topsoil should not be handled during or after heavy rainfall or when it is wetter than the plastic limit as defined by BS 3882. Planting should not take place in waterlogged conditions or when the ground is frozen.

SOIL AMELIORANT

Peat free compost to be spread over ornamental shrub beds @ minimum 50mm depth prior to cultivation.

TREES

All trees within shrub beds to be planted in separate pits in accordance with tree planting details. Tree pit to be 1000mm depth including minimum 150mm thick drainage layer of well washed gravel with a geotextile layer separating growing medium from drainage layer. Pit bottom to be broken up to minimum depth of 250mm and sides to be scarified.
 Trees to be backfilled with topsoil: tree planting compost 1:6 by volume. All plant material to comply with BS 3093 Part 1:1992, to be obtained from a nursery certified by the HTA and transported to site in accordance with the HTA Plant Handling Guide: 1996. All trees to be planted to the original root collar and the following methods should be implemented to secure them. Trees in soft - double staked using 75mm dia. pressure treated timber stakes and cross bar, secured with tree tie and spacer at a height not exceeding 1/3 of the tree height. Trees in hard - Playtuss underground guying system or equal approved.

SHRUB PLANTING

All shrubs to be positioned as shown on the drawing and to the density and specification listed in the plant schedule. Planting holes to be 150mm wider than the root spread, have the base ground thoroughly broken up before planting and backfilled with compost.

MIXES

To be arranged in groups of 7,9,11,13 or 15 with no two groups of the same species touching.

SUBSTITUTIONS

Upon submission of evidence that certain materials, including plant materials, are not available at the time of the landscape contract, the Landscape Contractor may be permitted to substitute other materials and plants in exceptional circumstances during the contract. All substitutions shall be of nearest equivalent species and variety to the original specified but shall be subject to approval by the Landscape Architect before any change is made.

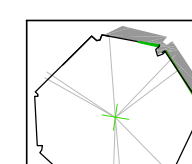
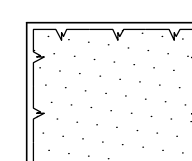
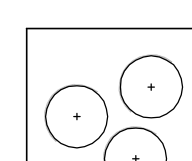
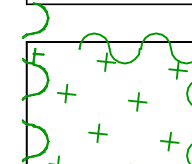
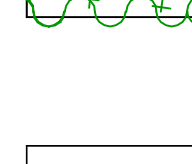
MULCH

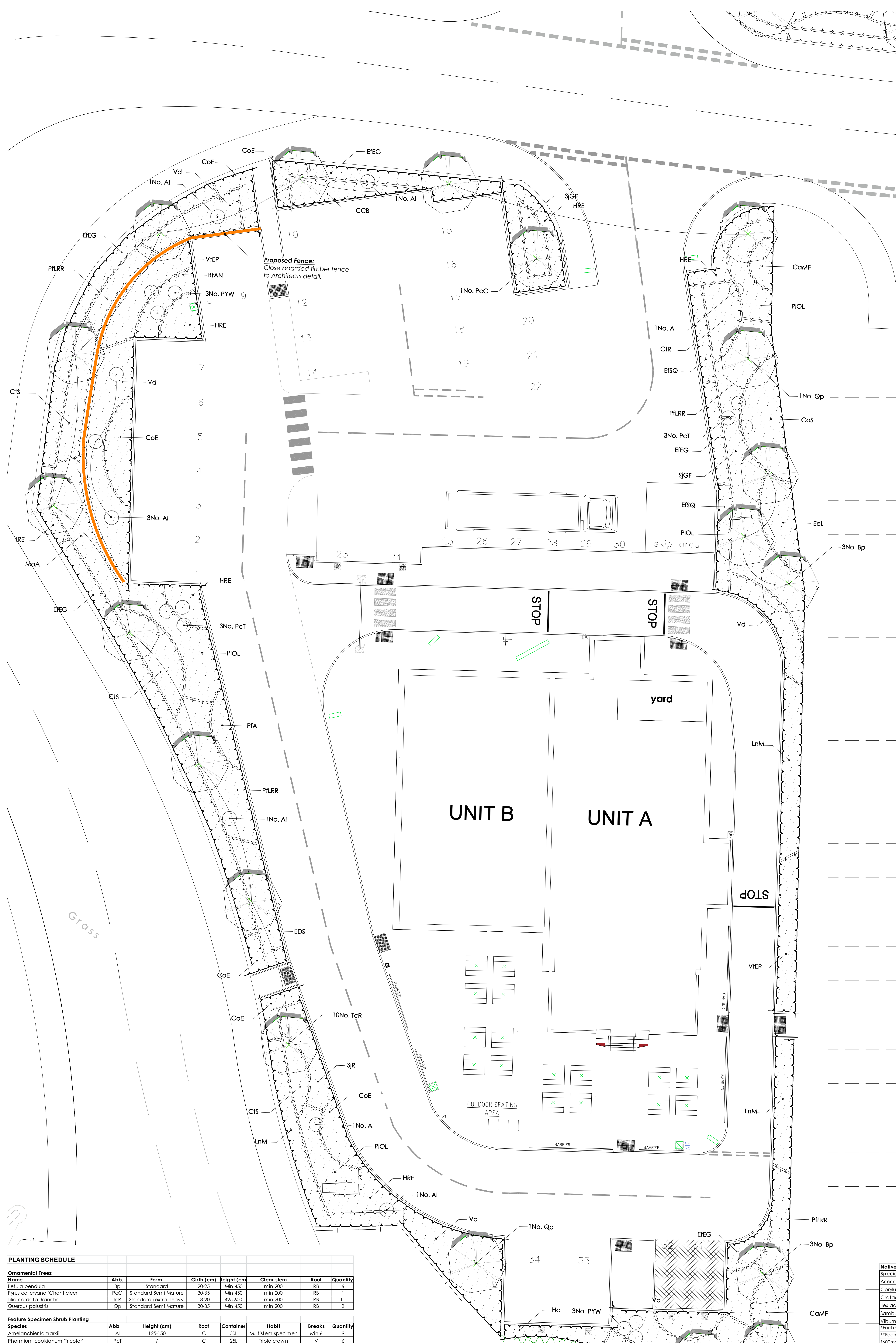
75mm depth of 8-35mm ornamental bark mulch to be supplied and spread to all planting areas. Finished mulch level to be installed and maintained at 25mm below any adjacent kerbs or paving surfaces.

MAINTENANCE

All planting areas to be maintained to a high standard for 12 months after practical completion, to ensure the landscape scheme is successful, and discourage decline of the area. The site is to be visited at minimum once per month. Any defects or plant losses occurring in the first 12 months to be replaced at the contractors expense. All planting beds to be re-firmed and kept weed free through hand weeding and application of approved herbicide where appropriate. The specified thickness of mulch is to be maintained. The condition of all trees is to be regularly checked, with ties and stakes adjusted or replaced as necessary. Shrubs to be pruned at appropriate times of year to promote healthy growth and desirable ornamental features. All arisings to be removed. Watering should take place as necessary to ensure establishment and continued success of all planting.

Soft Landscape Key:

-  Proposed ornamental tree
Refer to schedule for species & specification
-  Proposed ornamental shrub planting
Refer to schedule for species & specification
-  Proposed specimen shrubs
Refer to schedule for species & specification
-  Proposed native boundary mix
Refer to schedule for species & specification
-  Proposed Timber Fence
To IHP Architects detail & specification



PLANTING SCHEDULE

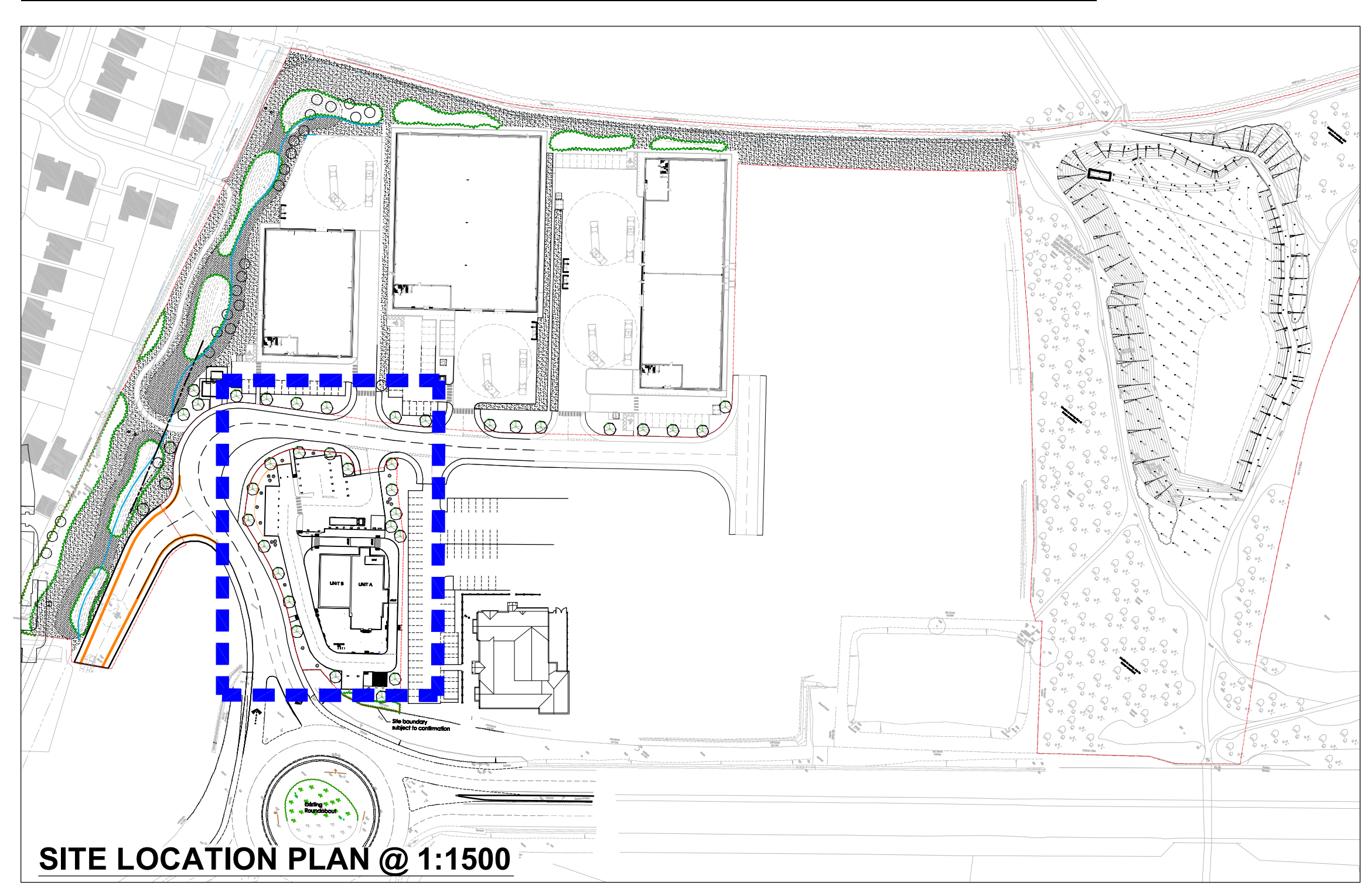
Name	Abb.	Form	Girth (cm)	Height (cm)	Clear stem	Root	Quantity
<i>Betula pendula</i>	Ba	Standard	20-25	Min 450	min 200	RB	6
<i>Pinus catteriana</i> 'Chanticleer'	PcC	Standard Semi Mature	30-35	Min 450	min 200	RB	1
<i>Tilia cordata</i> 'Renealmue'	TcR	Standard (extra heavy)	18-20	425-620	min 200	RB	10
<i>Quercus palustris</i>	Qp	Standard Semi Mature	30-35	Min 450	min 200	RB	2

Species	Abb.	Height (cm)	Root	Container	Habit	Breaks	Quantity
<i>Amelanchier lamarckii</i>	Al	125-150	C	30L	Multistem specimen	Min 6	9
<i>Phormium cookianum</i> 'Hicolor'	PcI	/	C	25L	Triple crown	V	6
<i>Phormium</i> 'Yellow Wave'	PfW	/	C	25L	Triple crown	V	6

Native Boundary Mix:

Species	% Mix	Root	Height (cm)	Specification	Density
<i>Acer campestre</i>	15%	BR	80-100	1+1 or 1/1 Transplant	1/m ²
<i>Corylus avellana</i>	15%	BR	60-80	1+2 or 1/2 Branched	1/m ²
<i>Cataegus monogyna</i>	35%	BR	60-80	1+1 or 1/1 Transplant	1/m ²
<i>Ilex aquifolium</i>	10%	C (3L)	60-80	Leader & Laterals	1/m ²
<i>Sambucus nigra</i>	5%	BR	60-80	1+1 or 1/1 Transplant	1/m ²
<i>Viburnum opulus</i>	20%	BR	60-80	1+2 or 1/2 Branched	1/m ²

*Each species to be planted in random groups of 7, 9 or 11 of each species of mix ratio indicated above.
 **Each transplant to be fitted with a biodegradable mulch mat - g6 ecomat and Tubex spiral rabbit guard (600mm high) and supported by a bamboo cane by Green-Tech or similar approved



Ornamental Shrub Planting

Species	Abb.	Height (cm)	Root	Container	Habit	Breaks	Density
<i>Berberis thunbergii</i> 'Atrorubra' Nana'	BIAN	20-30	C	3L	Branched	4	5/m ²
<i>Carex oshimensis</i> 'Evergold'	CoE	30-40	C	3L	Bushy	7	6/m ²
<i>Ceanothus transilvanicus</i> 'Reapers'	CIR	30-40	C	3L	Bushy	5	5/m ²
<i>Choisya ternata</i> 'Sundance'	CIS	30-40	C	3L	Bushy	4	5/m ²
<i>Cornus alba</i> 'Midwinter Fire'	CoMF	40-60	C	3L	Branched	4	3/m ²
<i>Cornus alba</i> 'Siberica'	CoS	40-60	C	3L	Branched	4	3/m ²
<i>Colarostele</i> 'Coral Beauty'	CCB	30-40	C	3L	Bushy	4	5/m ²
<i>Eleagnus ebbingei</i> 'Limelight'	Eel	40-60	C	3L	Bushy	3	4/m ²
<i>Escallonia</i> 'Donard Star'	EDS	40-60	C	3L	Bushy	4	4/m ²
<i>Eunonymus fortunei</i> 'Emerald & Gold'	EIEG	20-30	C	3L	Bushy	7	5/m ²
<i>Eunonymus fortunei</i> 'Silver Queen'	ESQ	20-30	C	3L	Bushy	7	5/m ²
<i>Hebe</i> 'Red Edge'	HRE	20-30	C	3L	Bushy	5	5/m ²
<i>Hypericum calycinum</i>	Hc	20-30	C	3L	Bushy	7	5/m ²
<i>Lonicera nitida</i> 'Magreen'	LnM	30-40	C	3L	Bushy	6	5/m ²
<i>Morhonia aquifolium</i> 'Apollo'	MAA	30-40	C	3L	Branched	4	4/m ²
<i>Potentilla fruticosa</i> 'Aubletwood'	PIA	30-40	C	3L	Bushy	3	4/m ²
<i>Philadelphus</i> 'Little Red Robin'	PILRR	30-40	C	3L	Branched	6	4/m ²
<i>Prunus laurocerasus</i> 'Otto Lyken'	PIOL	30-40	C	3L	Bushy	3	4/m ²
<i>Prunus lusitanica</i>	PI	40-60	C	3L	Bushy	5	4/m ²
<i>Skimmia japonica</i> 'Rubella'	SJR	30-40	C	3L	Bushy	7	5/m ²
<i>Spiraea japonica</i> 'Goldflame'	SIJGF	20-30	C	3L	Bushy	6	5/m ²
<i>Viburnum x davidii</i>	Vd	20-30	C	3L	Bushy	3	5/m ²

20/11/2014
 Revisions: Timber fence added & landscape amended accordingly AS AS
 Description: CHAN

Project Title: Proposed Drive Thru Unit Gateway 36 Deane Valley Parkway Bartsley

Client: HARWORTH ESTATES

Status: FOR PLANNING

Scale: 1:100 Drawing No: AD

Drawn By: AS Checked By: AS Date: 11/15

Drawing Title: Landscape Plan

Job-Design: V11462C L01 A

vector
 design concepts

LANDSCAPE DESIGNERS
 4 ST JOHN'S NORTH, WAKEFIELD, WF1 3QA TEL 01924 330366
 www.vector.co.uk