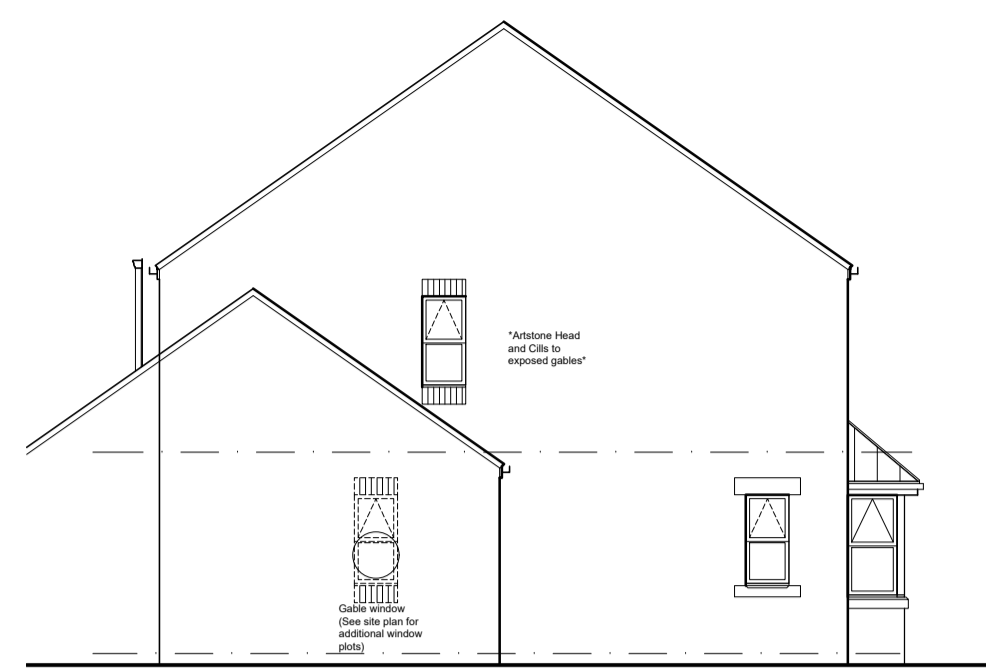
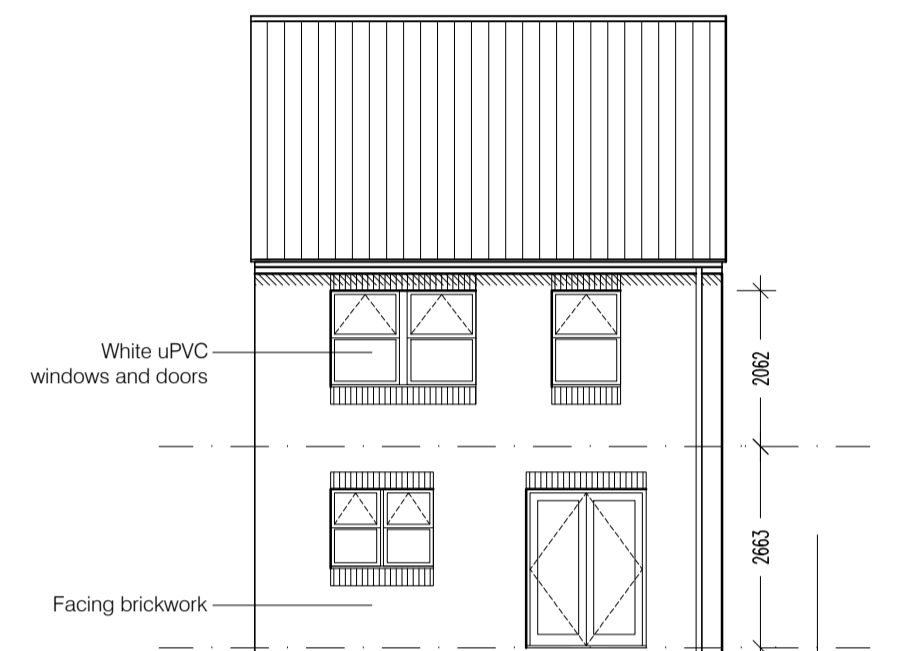




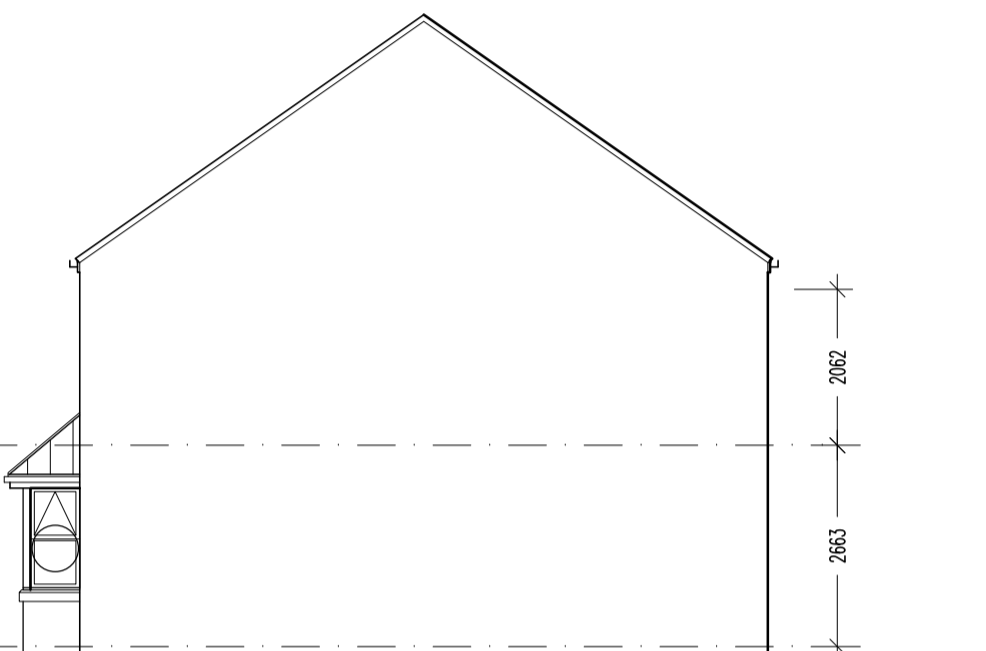
Front Elevation



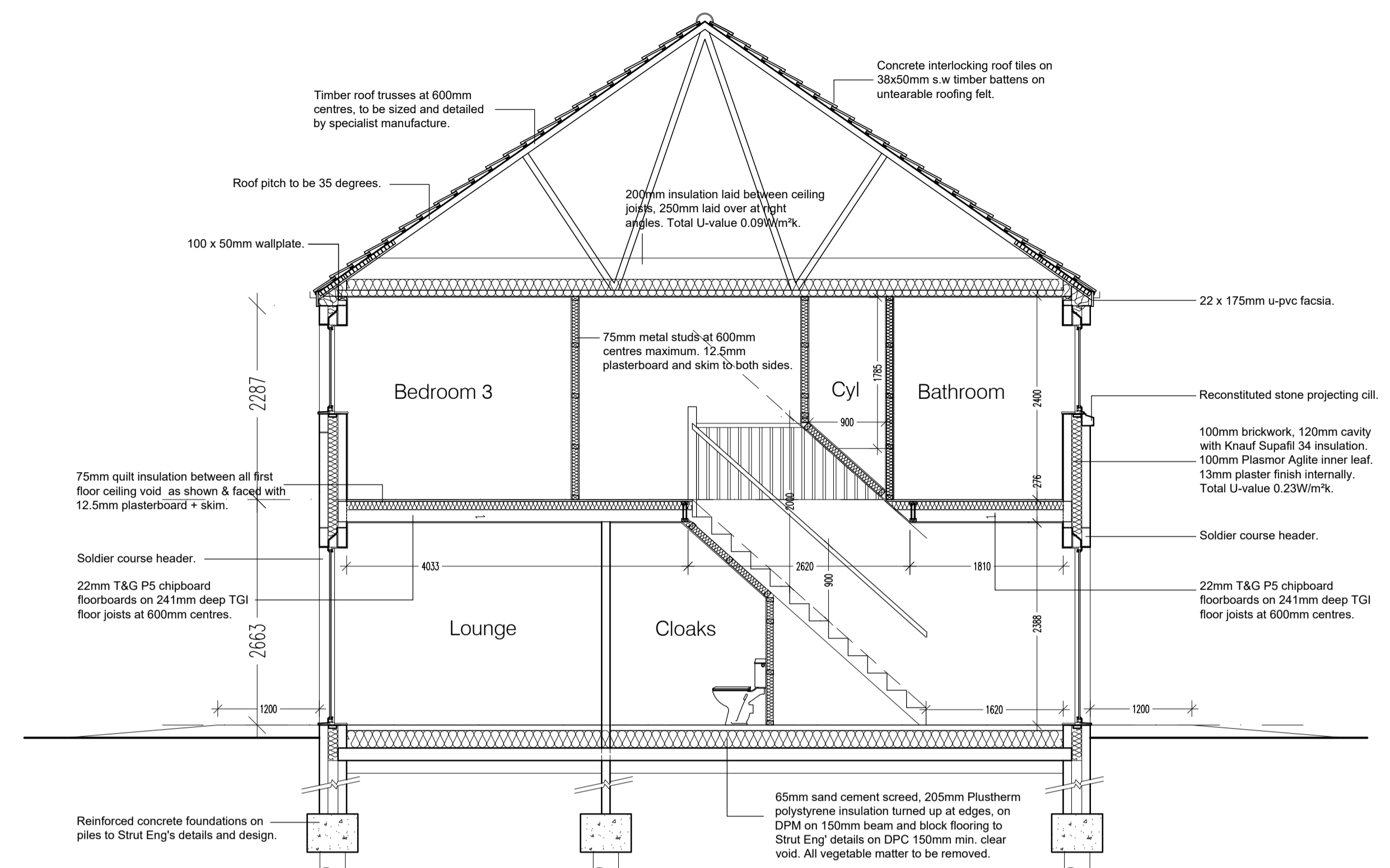
Side Elevation



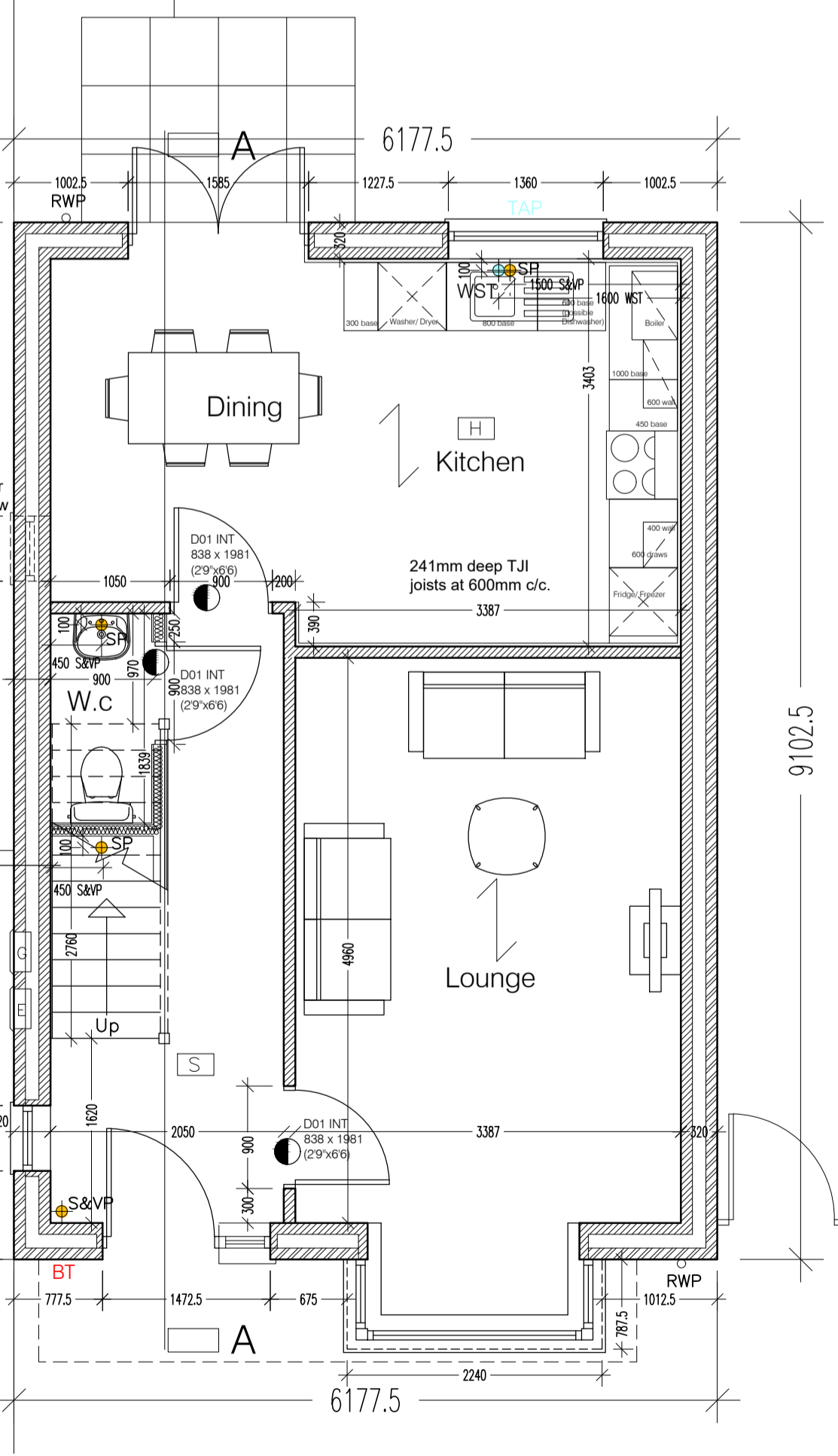
Rear Elevation



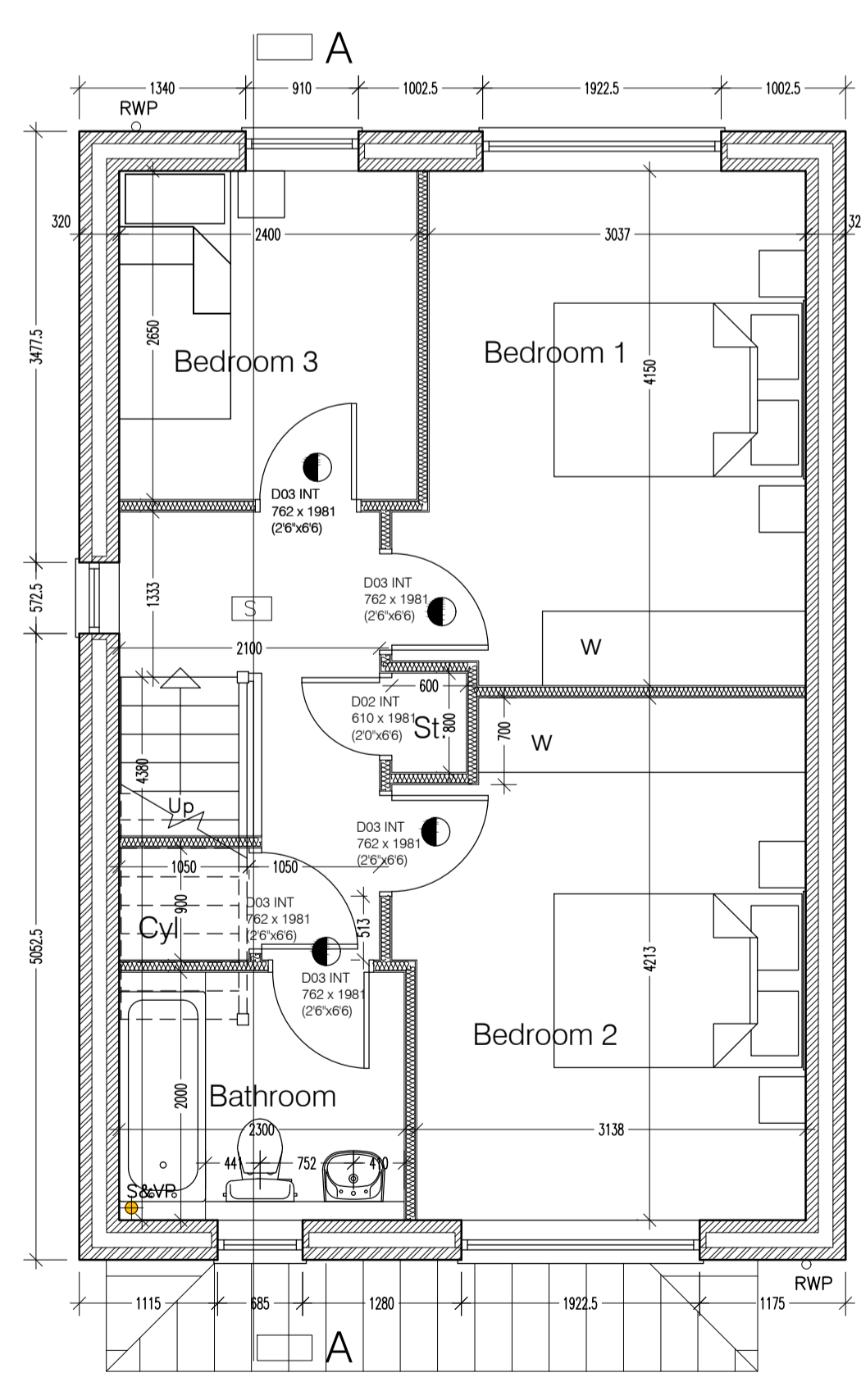
Side Elevation



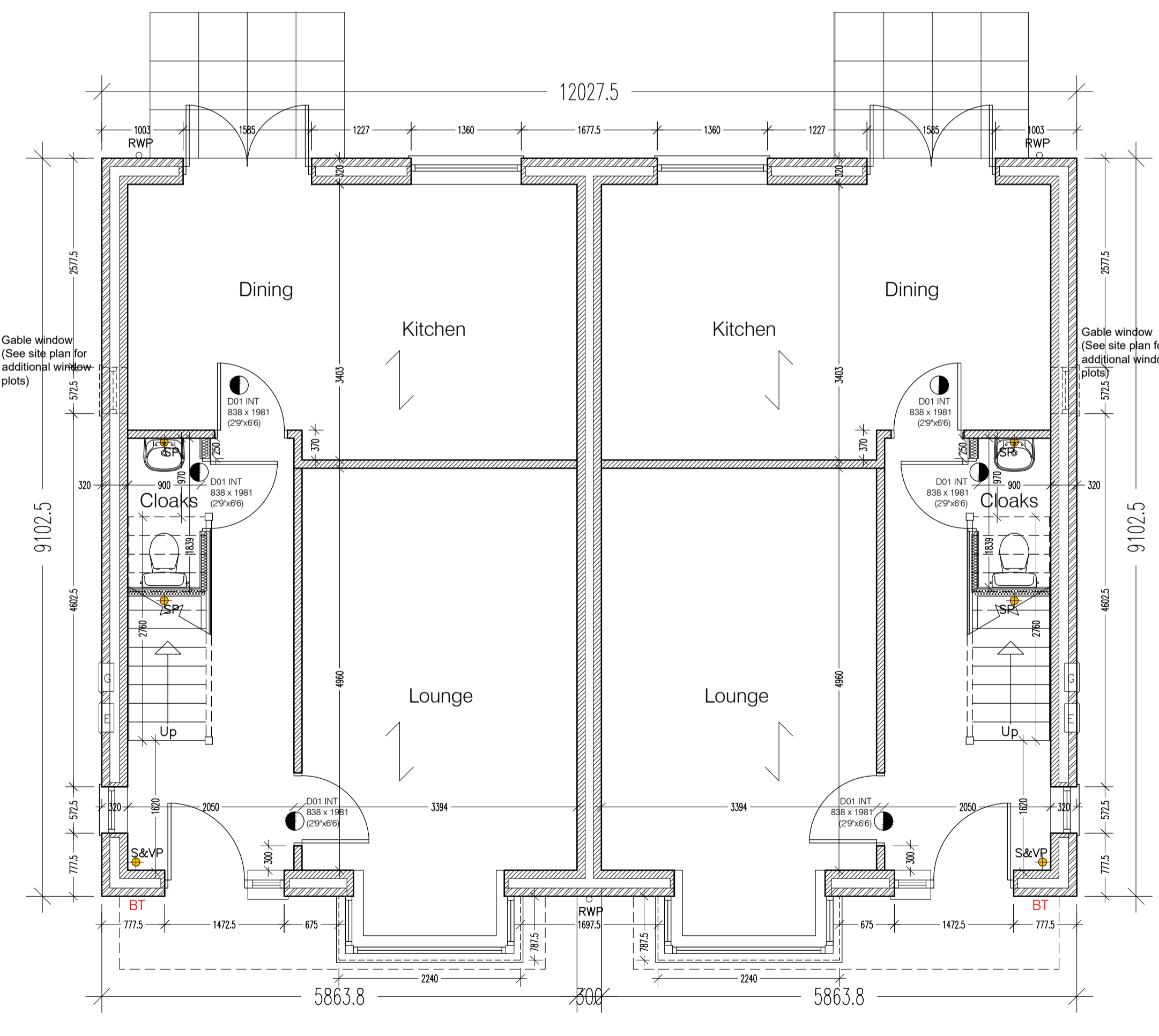
Section A-A



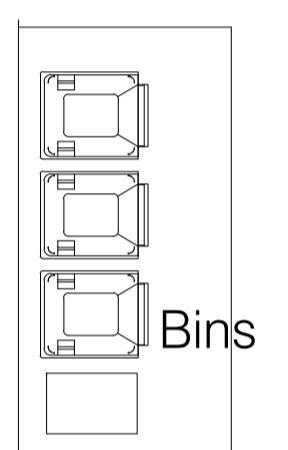
Ground Floor Plan



First Floor Plan



Ground Floor Plan - Pair



Bins

Type Willows - 3 Bedroom 2 storey

Rev G 7th Jan '25 Artstone Note added for exposed gables.  
 Rev F 14th Oct '24 Gable window added for SBD.  
 Rev E 12th Jun '24 Lounge wall shown as brickwork.  
 Rev D 21st Jul '23 Wall Cavity updated to 120mm cavity.  
 Rev C 22nd Jun '22 SVP positions amended and Gully removed.  
 Rev B 19th Jan '19 Dimensions added to bay window.  
 Rev A 22nd Nov '18 Position of gable window amended.

Project: Saul Homes Standard House Types

Title: House Type 'Willows' Ground and First Floor Plan and Elevations

Scales: 1:50 1:100 @ A1 Date: 10 / 17 Checked:

Drawing no: SH / ST / 26 Rev: G

Burnwood Office Park  
 Common Road  
 Brierley  
 Barnsley  
 S72 9ET  
 T: 01226 707090  
 F: 01226 707091  
 info@saulhomes.co.uk  
 www.saulhomes.co.uk



Residential Development at  
 Doncaster Road, Darfield, Barnsley