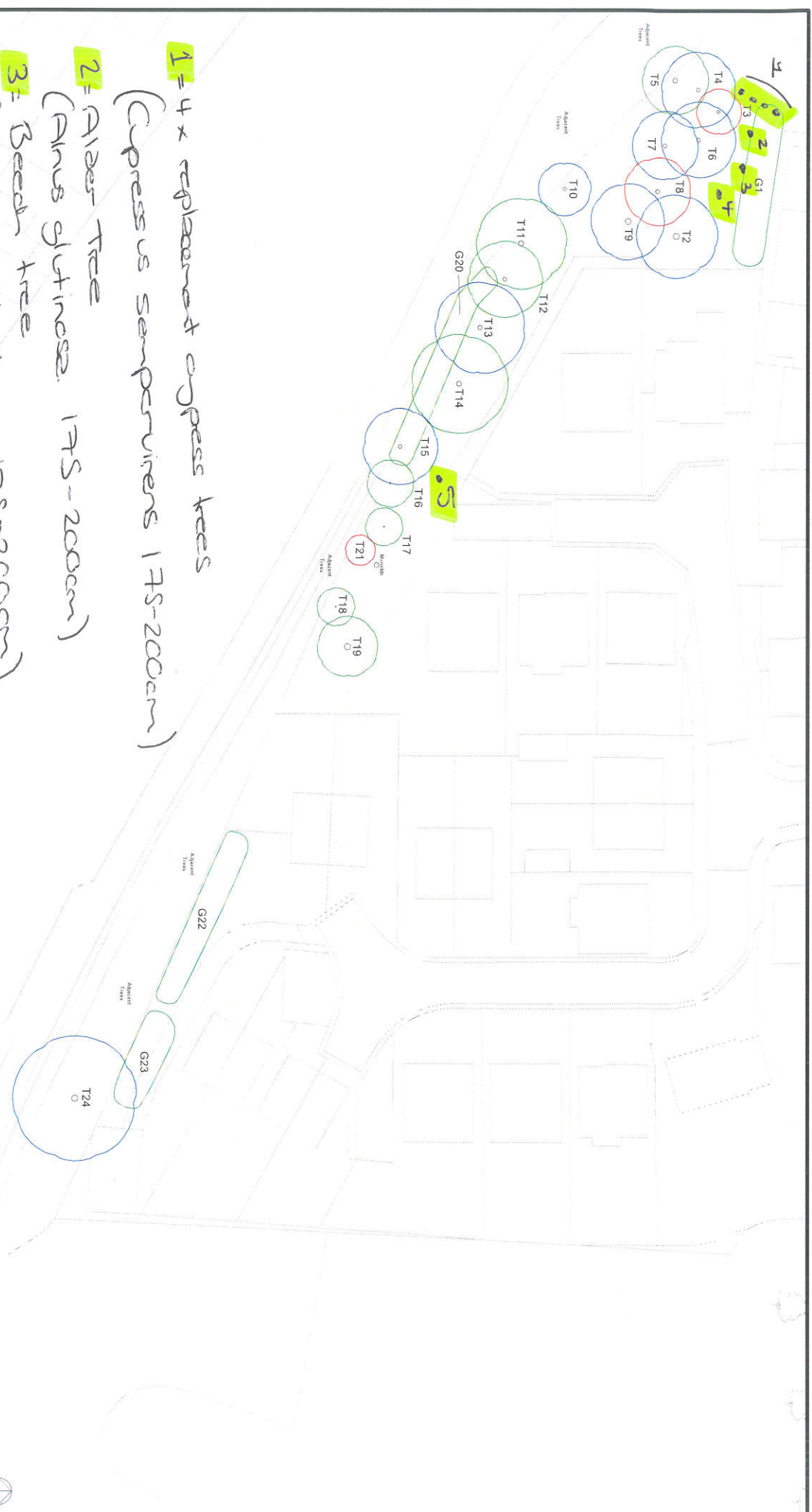


# SCHEME OF REPLACEMENT TREE PLANTING - PROPOSED MAJOR / SQUIRES GARDENS



- 1** = 4 x replacement cypress trees  
(Cyperus sempervirens 175-200cm)
- 2** = Alder tree  
(Alnus glutinosa. 175-200cm)
- 3** = Beech tree  
(Fagus sylvatica. 175-200cm)
- 4** = Rowan tree  
(Sorbus aucuparia. 175-200cm)
- 5** = Rowan tree  
(Sorbus aucuparia. 175-200cm)

**AWA**  
LANDSCAPE ARCHITECTS

Appendix 6: Tree Plan  
Land at Squires Gardens, Barnsley  
Ref: AW/A439

SCALE: 1:500  
DATE: 23/01/2024

CATEGORY	DESCRIPTION
A	Category A Highly Recommended
B	Category B Recommended
C	Category C Not Recommended
○	Tree to be removed