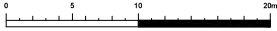


# TREE PROTECTION PLAN (v2) - UPDATED APRIL 2025

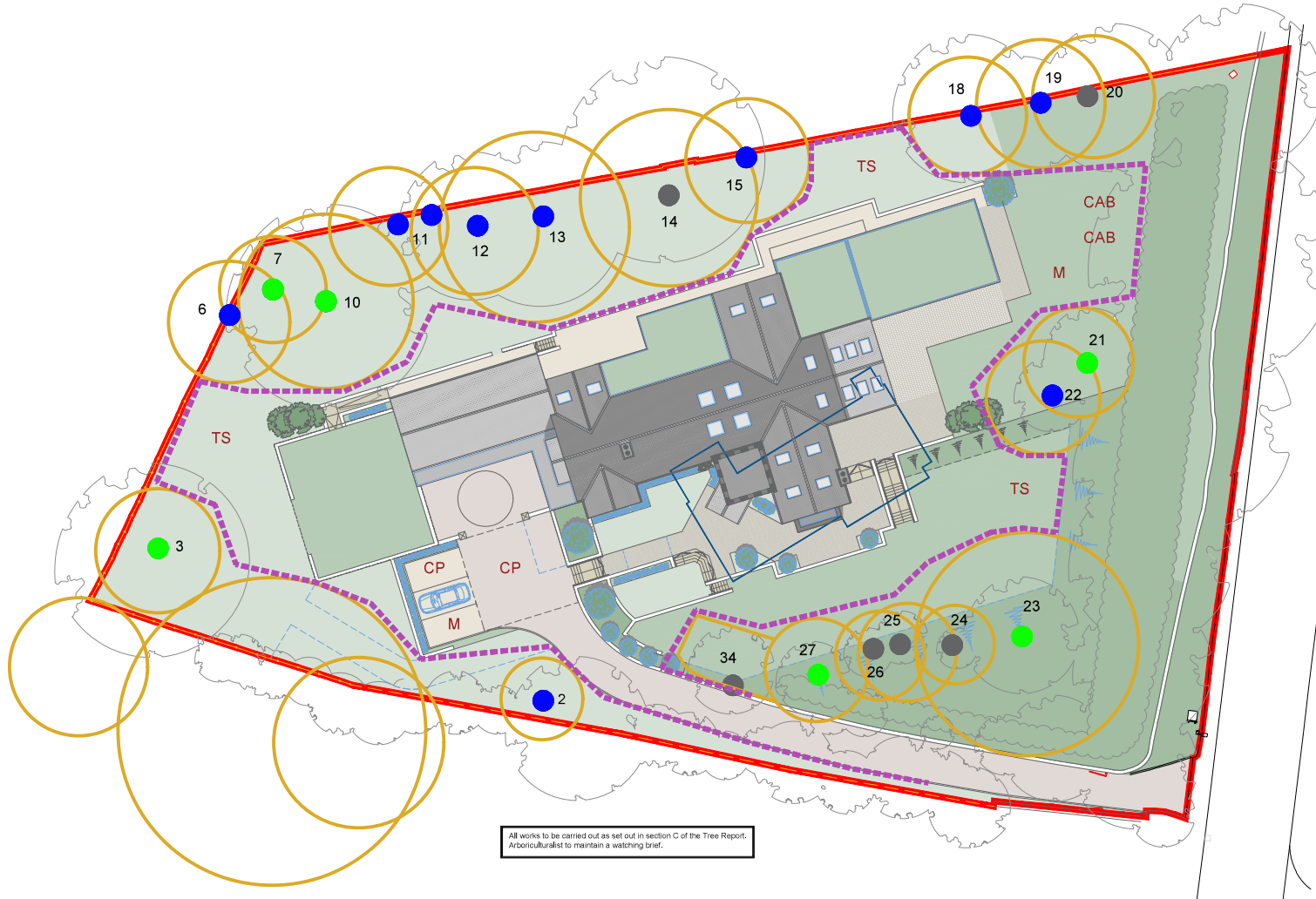
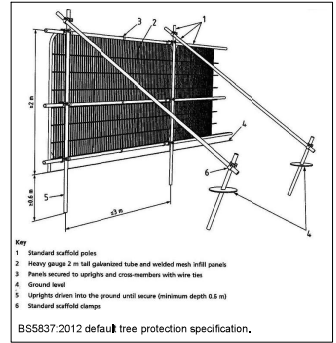
— denotes outline building demolished 2024  
— denotes perimeter of Root Protection Area (RPA) retained trees only  
● category A tree  
● category B tree  
● category C tree  
● category U tree

for all details see October 2019 tree report

— 2m high mild steel tree protection fencing as per BS5837:2012 default tree protection specification.  
 To be erected before any site works begin and maintained in situ until all demolition, construction and associated landscaping has been completed.



CAB Site Accommodation  
CP Contractor's Parking  
M Materials Storage  
TS Topsoil Storage



All works to be carried out as set out in section C of the Tree Report. Arboriculturalist to maintain a watching brief.