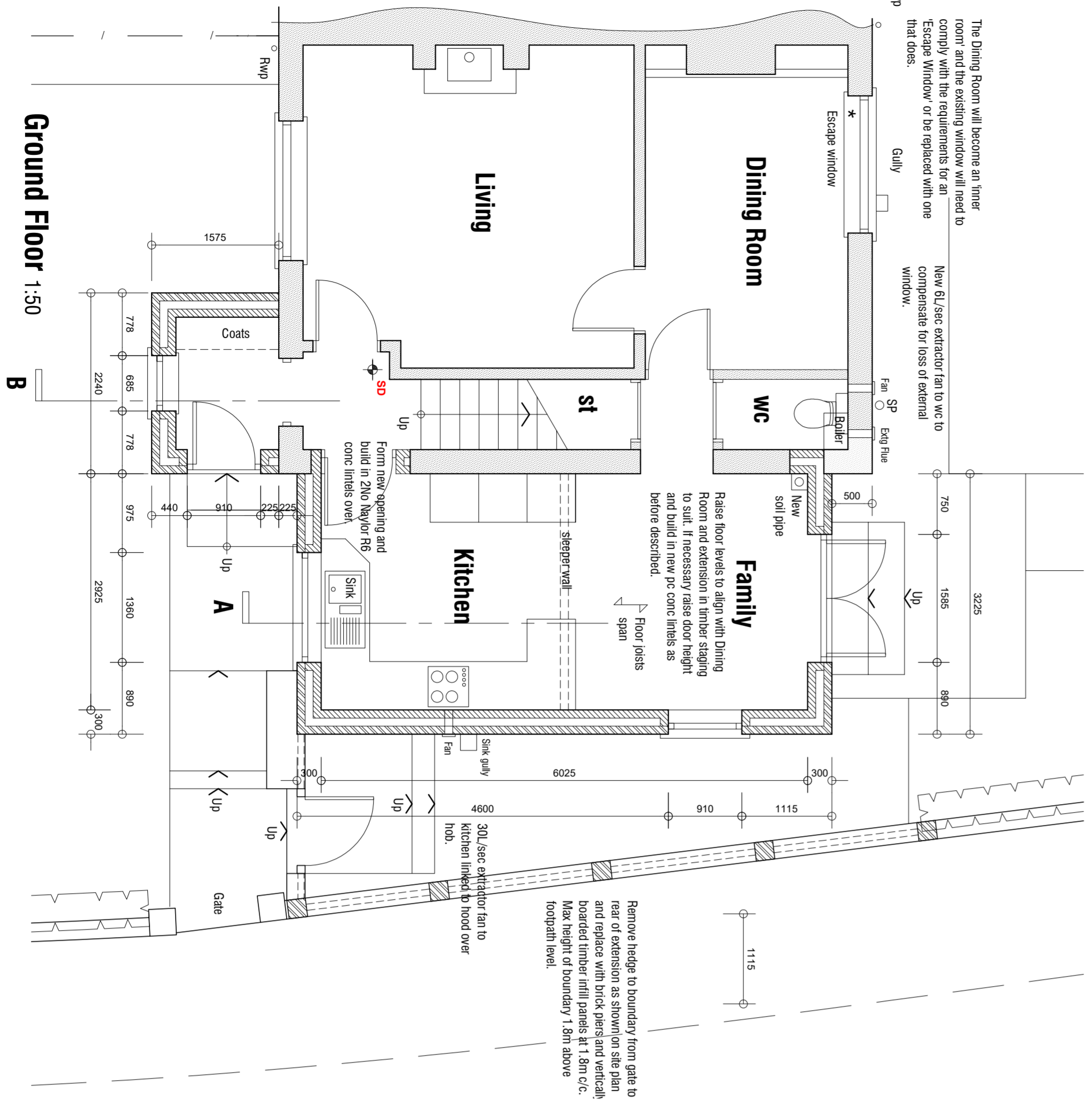
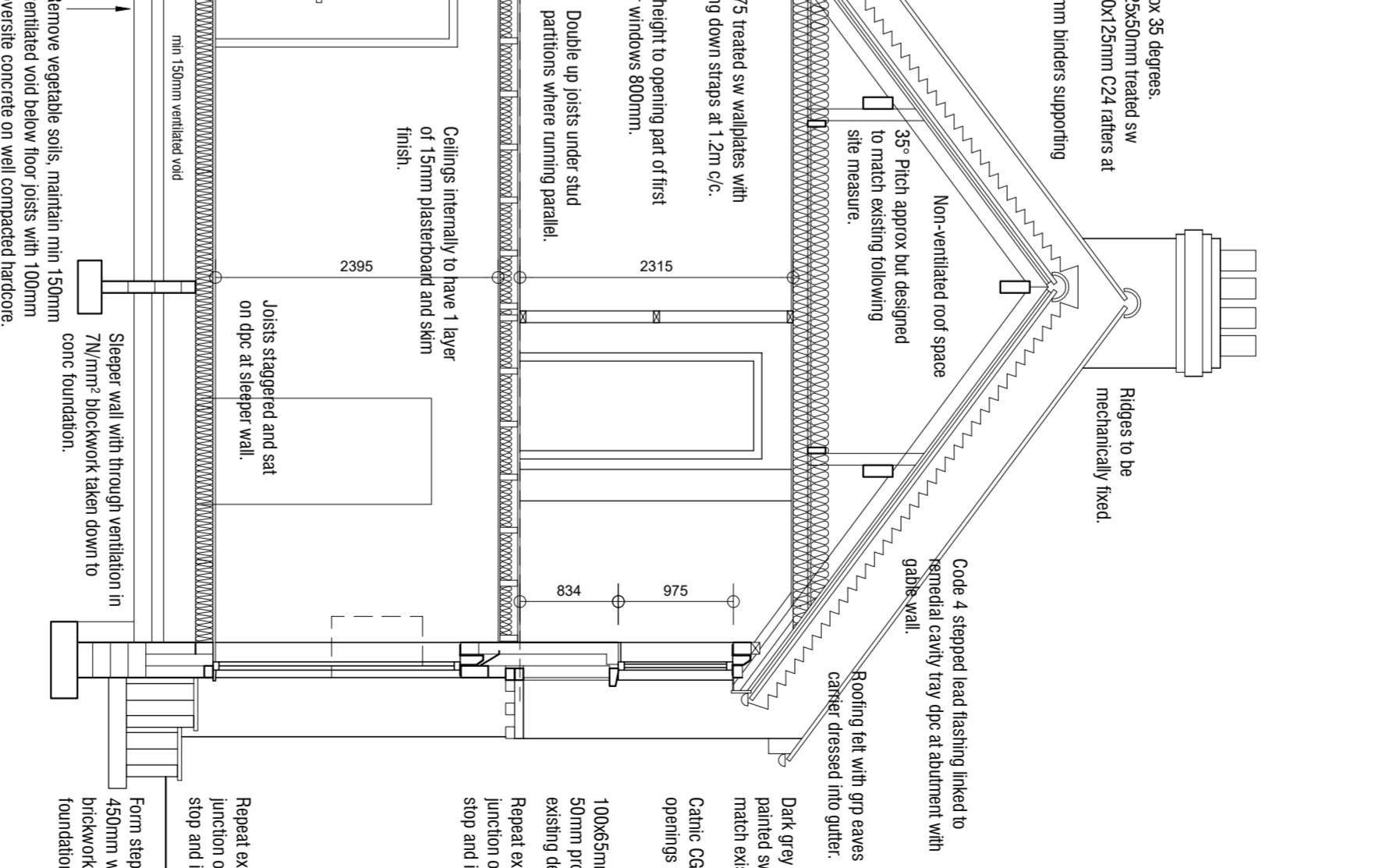
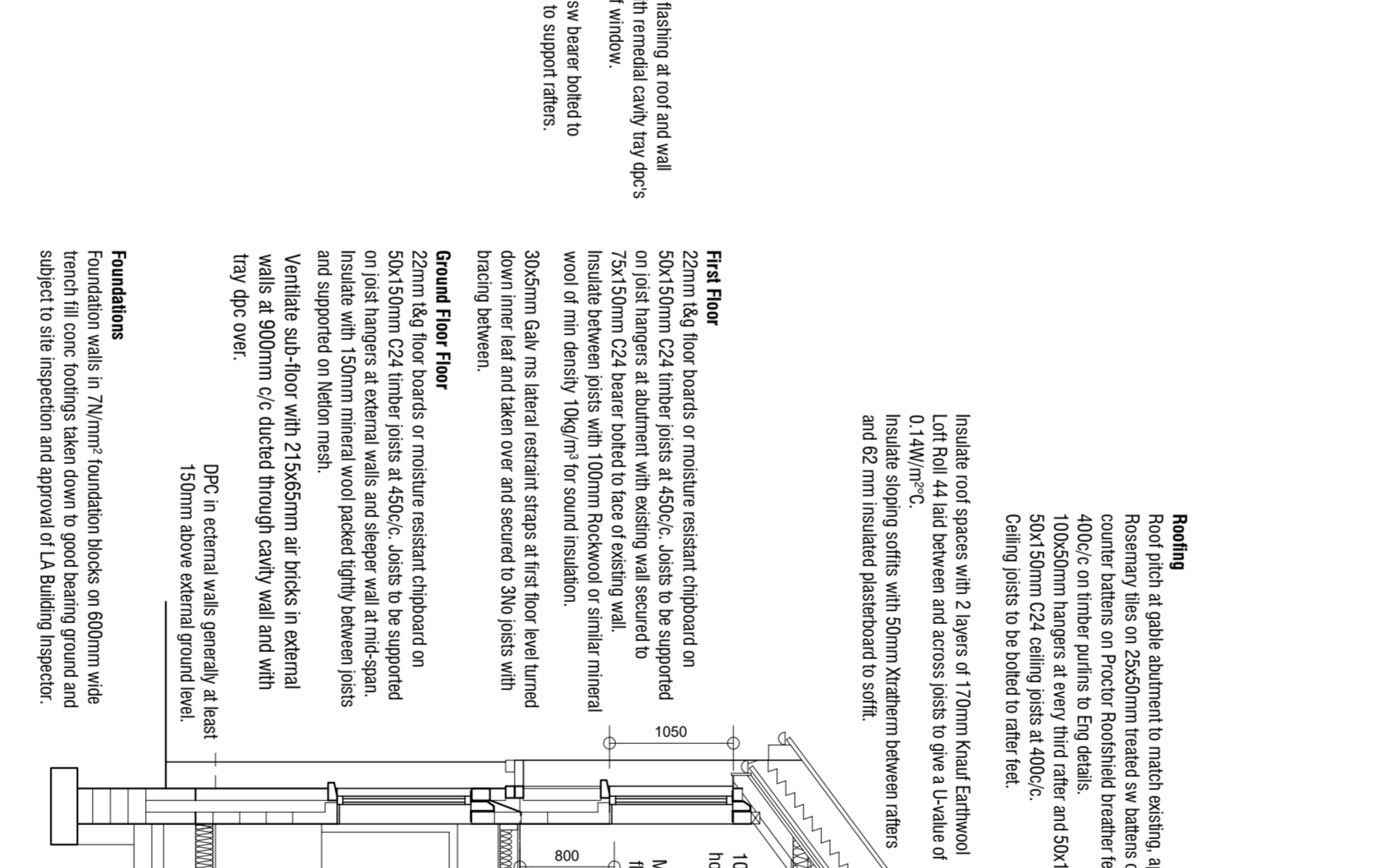
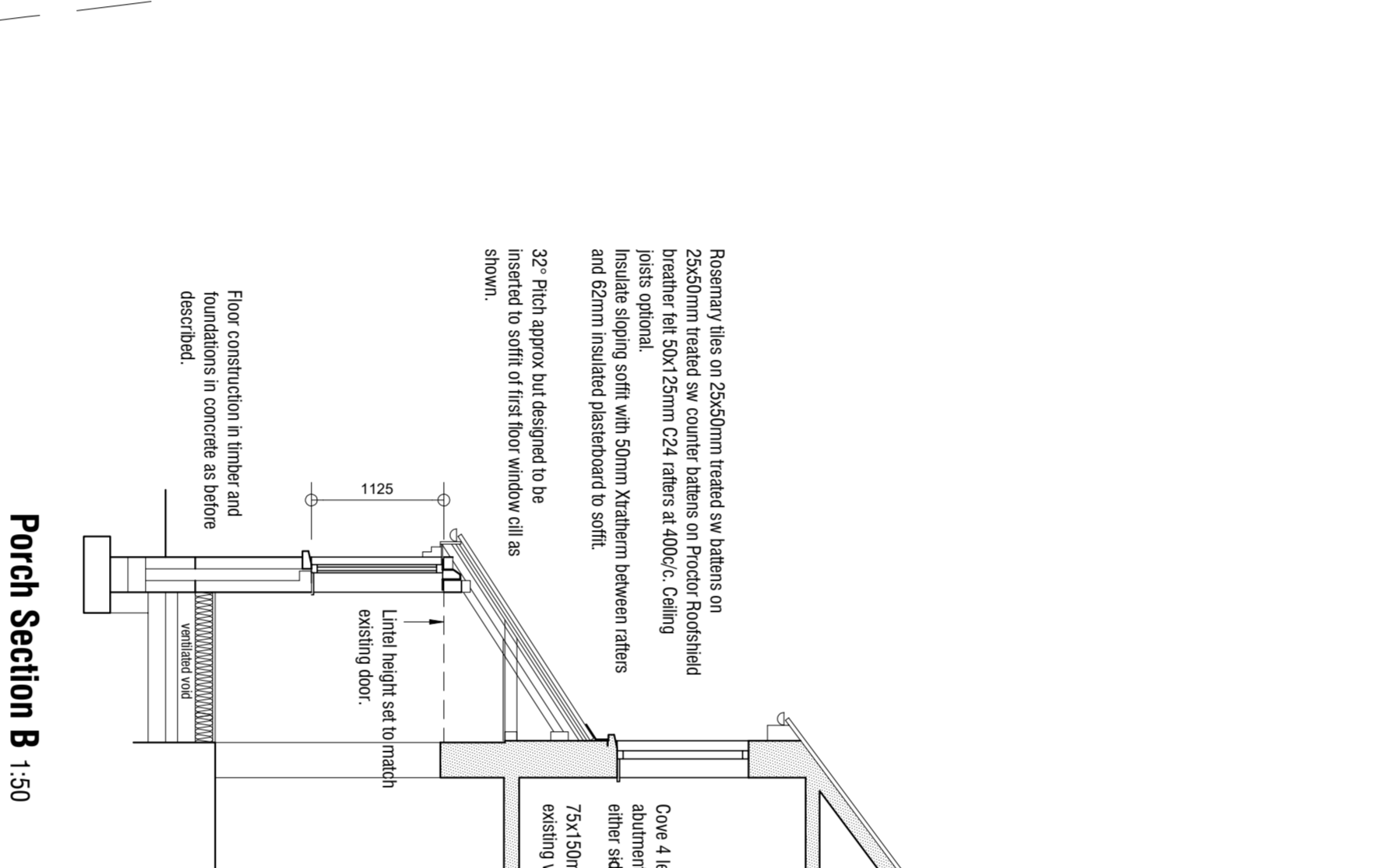
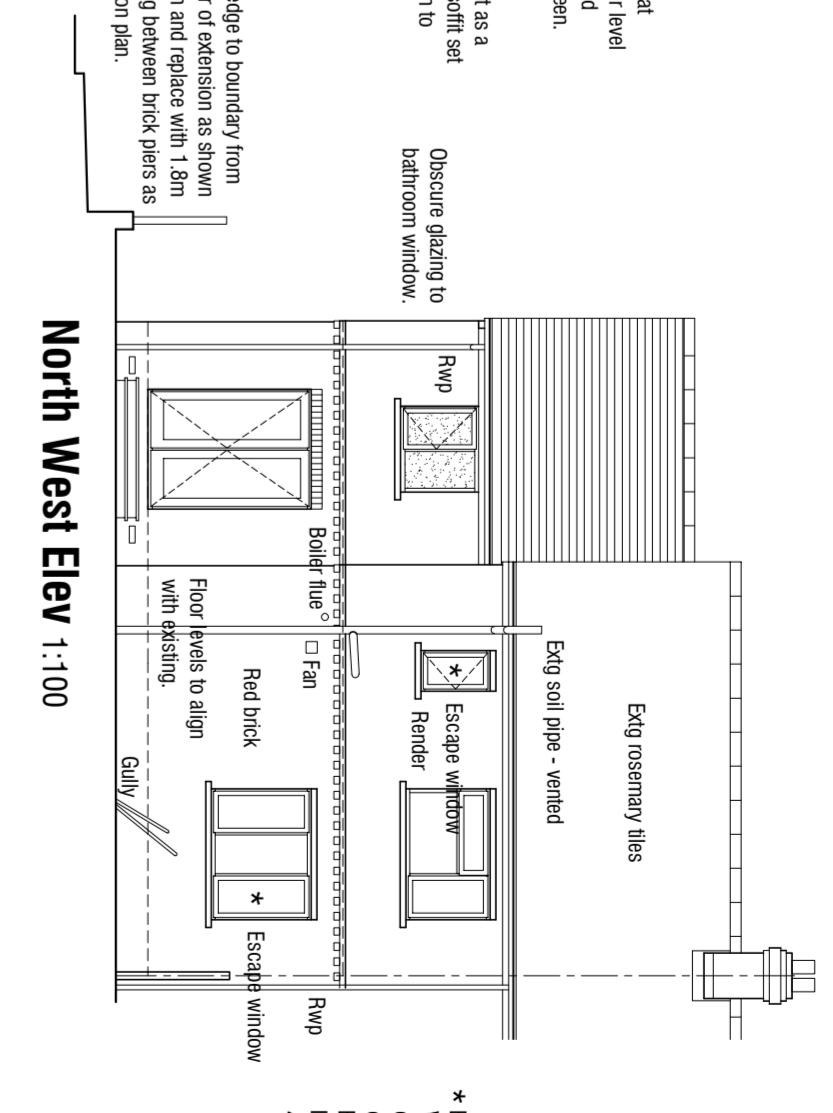
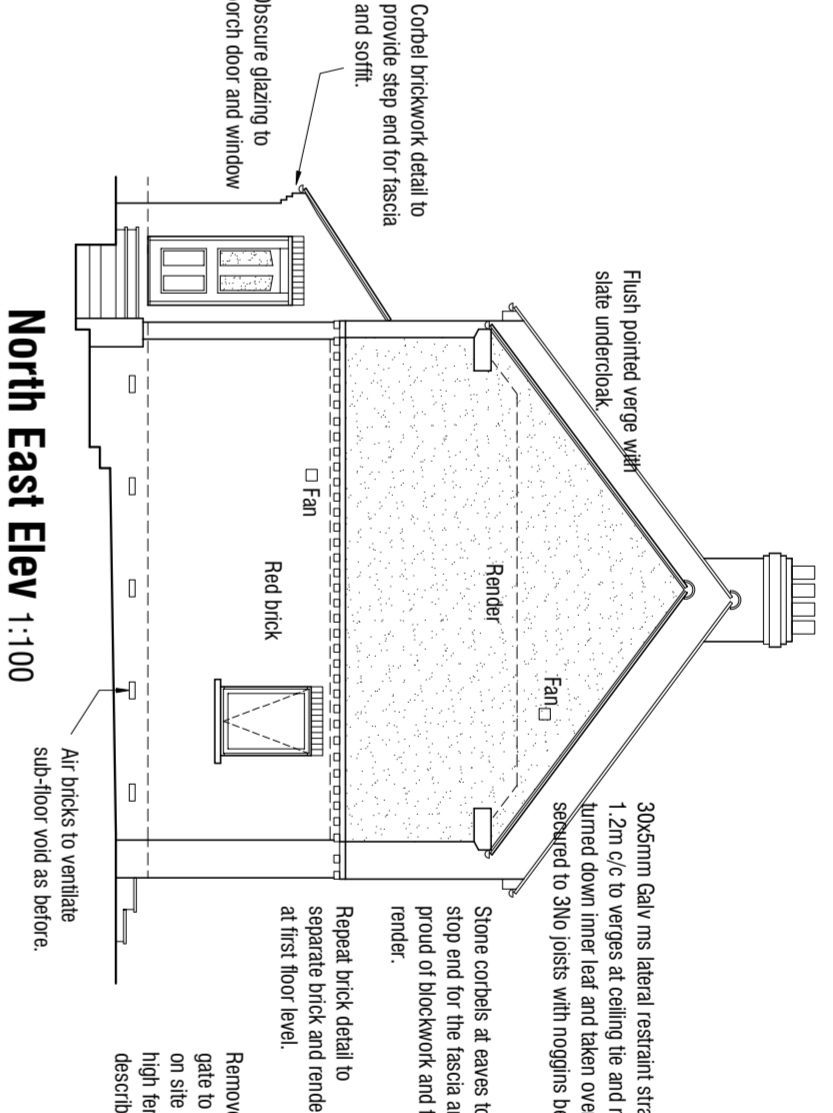
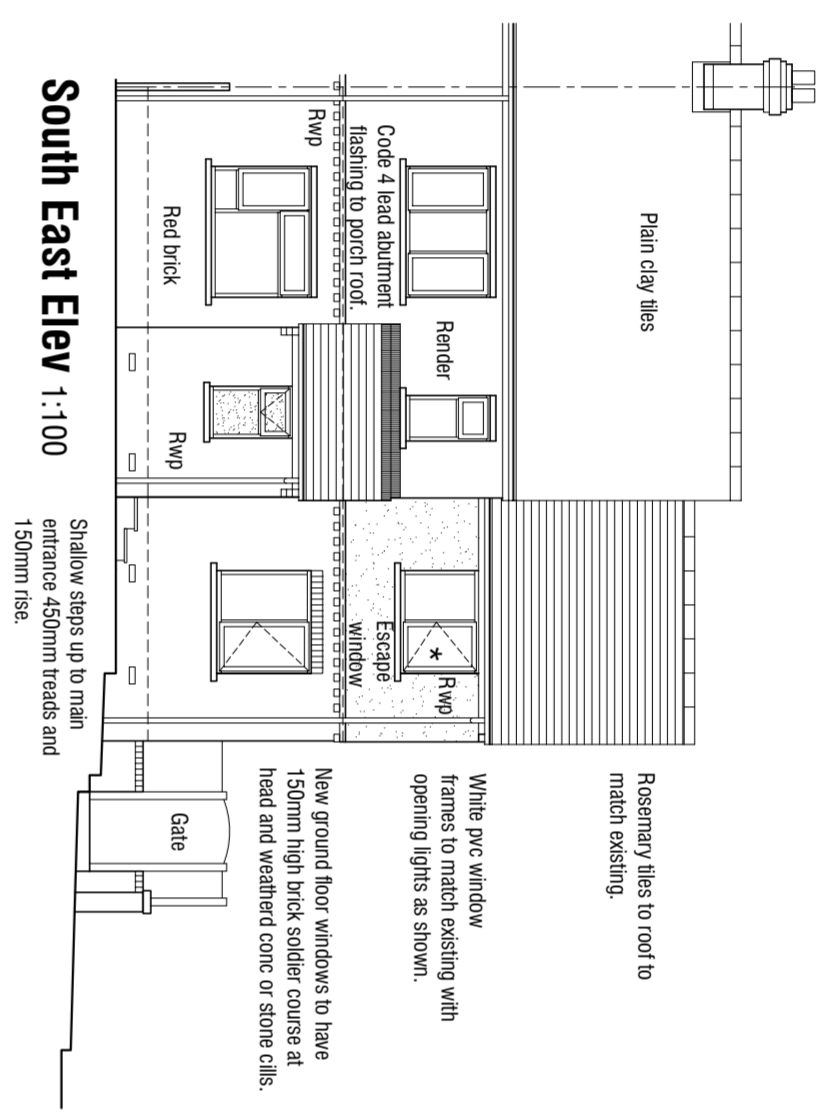


First Floor 1:50



Ground Floor 1:50



**Walling**  
New external cavity walling in outer leaf to be either 102mm facing brick or 102mm facing brick with 102mm inner leaf. The inner leaf to be constructed in accordance with the provisions of BS 5628-1:2008. The outer leaf to be constructed in accordance with the provisions of BS 5628-1:2008. The walling to be constructed in accordance with the provisions of BS 5628-1:2008. The walling to be constructed in accordance with the provisions of BS 5628-1:2008.

**Heating**  
Existing gas fired boiler to be inspected by suitably qualified person and assessed to satisfy the requirements of the Gas Safety (Installation and Use) Regulations 2008. The boiler to be replaced by a new gas fired boiler of equivalent or greater capacity. The boiler to be replaced by a new gas fired boiler of equivalent or greater capacity. The boiler to be replaced by a new gas fired boiler of equivalent or greater capacity.

**Fire Detection**  
Provide and fit mains wired interlinked smoke detectors/stamps on ceiling in living room, dining room, kitchen and first floor. Provide and fit mains wired interlinked smoke detectors/stamps on ceiling in living room, dining room, kitchen and first floor. Provide and fit mains wired interlinked smoke detectors/stamps on ceiling in living room, dining room, kitchen and first floor.

**Electrical**  
Additional wiring to be carried out by a person under the competent supervision of a registered electrician. The wiring to be carried out in accordance with the provisions of BS 7671:2018. The wiring to be carried out in accordance with the provisions of BS 7671:2018. The wiring to be carried out in accordance with the provisions of BS 7671:2018.

**Lighting**  
Provide 100% low energy lighting to new fittings with extension providing flood lighting that only take lamps having a luminous efficacy greater than 40 lumens per circuit-watt.

Rev A 03.01.2019 - Update plans for submission.

73 INTAKE CRESCENT  
DODWORTH  
BARSLEY  
S75 3NL

**DETAILED PROPOSALS**  
**PLANS ELEVATIONS AND SECTION**

architectural design and building consultants  
mboothdesign

Fairfield House  
Burnley  
S77 2FS  
T 01282 266256  
M 07889 888800  
E mboothdesign@btconnect.com

Scale 1:100 1:50 1:20@ A1 Drawn MAB  
Date JANUARY 19 Rev. A  
Date JANUARY 19 Rev. A  
Dwg No. WD1  
Rev. A