

# Biodiversity Management Plan (BMP)

**Cooperative Street, Goldthorpe**

**Barnsley Metropolitan Borough Council**

Report Ref. ER-6065-05A

June 2025

Report Reference:	Biodiversity Management Plan (BMP) Cooperative Street, Goldthorpe,
Report Reference:	ER-6065-05
Written by:	Christopher Shaw BSc (Hons), CEcol, MCIEEM Associate Ecologist
Technical review:	Micah Duckworth BA MSc MCIEEM Biodiversity Manager
Quality Assurance:	Rachel Barnes BSc (Hons) MSc Graduate Ecologist
Approved for issue:	Christopher Shaw BSc (Hons) MCIEEM Associate Ecologist
Date:	30/06/2025

# Introduction

This document is produced for Barnsley Metropolitan Borough Council (BMBC) to aid in the discharge of Conditions 3, 4 & 6 of the Decision Notice linked to Planning Application 2024/0611 and to show how the new greenspaces will be created and managed for the benefit of local wildlife. For reference, the exact wording of these conditions is provided on page 4.

The Plan is produced in accordance with Chapter 11 of British Standard 42020. 'Biodiversity Management Plans' (BMPs) are reports which set out how wildlife interests will be enhanced, restored and maintained, a term is referenced in BS42020 Clause D.4.5.

## Documents referenced

In producing this plan the following sources have been referred to:

- Preliminary Ecological Appraisal Report, Ref. ER-6065-01A (10/04/2024). Brooks Ecological.
- Biodiversity Net Gain Assessment, Ref. ER-6065-02 (03/05/2024). Brooks Ecological.
- Statutory Biodiversity Metric Calculation Tool, Ref. BM-6065-01. Brooks Ecological.
- Statutory Biodiversity Metric Condition Assessments, Ref CA-6065-01. Brooks Ecological.
- Landscape Plan Softworks, drwg. BA23748\_LD\_C (18/03/2025). Barnes Associates Ltd.
- Proposed Site Plan, drwg. GHP-PH2a-00-DR-A-022. Rev. P8 (29/11/23) BMBC Property Services.

## Aims

The aim of this plan is to maximise delivery of the wildlife potential of habitats on site, creating areas of semi-natural vegetation which will provide a greater benefit to urban wildlife than standard amenity/ornamental planting otherwise would.

## Scope of Plan

This plan relates to the residential development scheme shown in the figures opposite.

## Delivering the Plan

The Developer is responsible for the creation and establishment works. The Developer will appoint a company working under the direction of an Ecological Clerk of Works (ECOW) to oversee the delivery of this plan.

The ECOW would be a qualified Ecologist and member of the Chartered Institute of Ecology and Environmental Management, or be otherwise approved by the LPA.

After completion, this development of nine council houses and greenspaces will remain in the ownership of BMBC.

The council commissions Berneslai Homes - an Arms Length Management Organisation (ALMO) - to manage their housing stock and estates.



As the properties are council owned, the management of them and the greenspaces will be administered by Berneslai Homes in perpetuity and not just for the period of five years.

Berneslai Homes have a Service Level Agreement with the council's Neighbourhood Services team which covers all their grounds maintenance responsibilities. Berneslai Homes will add the new greenspaces to the Neighbouring Services schedule at the end of any defects period. Groundworkers will visit the site regularly to carry out grass cutting works and at key points in the growing season for tree and hedge maintenance.

In addition, Barnsley Homes have a dedicated housing officer who covers the Goldthorpe area who will report any concerns about the condition of the greenspaces before agreeing remedial action.



3 The development shall be completed in line with the BNG Assessment, the Bat Emergence Survey Report, the Preliminary Ecological Appraisal and the Statutory Biodiversity Metric. All recommendations will be implemented in full according to the timescales laid out, and thereafter permanently maintained for the stated purposes of biodiversity conservation.  
**Reason: In the interests of Biodiversity in accordance with Local Plan Policy BIO1.**

4 The development shall be carried out in accordance with the following biodiversity enhancement measures. The measures listed below shall be implemented in full, prior to first occupation of the site, and full details including photographic evidence provided to the Local Planning Authority, the features shall thereafter be permanently retained.

- o Integrated bat roosting boxes and integrated swift boxes to be installed in suitable locations within each new dwelling; and
- o Hedgehog highways to be installed in all boundary fencing, including fences between dwellings. The hedgehog highways will be signposted to prevent residents blocking gaps.

**Reason: In the interests of Biodiversity in accordance with Local Plan Policy BIO1.**

6 Prior to the commencement of development, a Biodiversity Enhancement Management Plan (BEMP) covering the initial five years of the scheme shall be submitted to and approved in writing by the Local Planning Authority.  
**Reason: In the interests of Biodiversity in accordance with Local Plan Policy BIO1.**

# Habitat & BNG Overview

The Statutory Metric has been used to calculate the net unit change for the Site, which has been predicted an overall net gain of 0.22 Habitat Units (+122.82%).

This score is based on our interpretation of the Landscape Masterplan, as shown in the figure (right).

Calculations for the change in Habitat Units have been based on the entire Site being cleared of existing habitats and land reprofiled, which results in the loss of all baseline Habitat Units.

Habitat Units are then generated post-development through the creation of the following habitats;

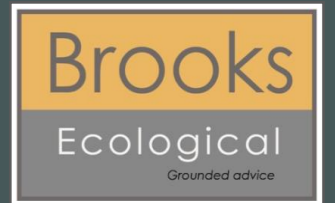
- Vegetated gardens (0.0853ha) - Condition score n/a
- Introduced shrubs (0.0162ha) - Condition score n/a
- Modified grassland (0.024ha) - Poor condition
- Small urban trees (x12) - Moderate condition

Vegetated gardens, Introduced shrubs and small urban trees do not require any specific 'ecologically-lead' habitation creation or management prescriptions. These habitats will automatically attain the Habitat Unit scores detailed in the BNG Assessment by following the Landscape Masterplan details. These habitats are therefore not covered in this Biodiversity Management Plan.



# Grassland (Creation)

**Rationale** Creating functional yet flower-rich amenity type grassland to attract invertebrates and pollinators.  
Not intended to replicate priority grassland habitat type.



## Objectives

A single grassland types will be created, which is suitable for high frequency mowing and high intended recreational use.

Flowering Lawn : - Modified Grassland

## Specification

### Preparation:

No more than 5cm of topsoil will be spread over the subsoil profile.  
This will be loose tipped and spread with back actor to avoid compaction, and harrowed to a fine tilth ready for seeding.

### Seeding

The following seed mixes will be sown

- Emorsgate EL1 Flowering Lawn Mix

Seed according to supplier's instructions.

If soils have been spread before September, any weed growth that has established in the meantime will be sprayed off with glyphosate and a seedbed be re-prepared.

Seed will either be broadcast by hand or by approved lightweight machinery at ca. 4g/m<sup>2</sup>.

Following seeding the area will be lightly rolled to incorporate the seed with the growing substrate.



# Flowering Lawn (Management)

## Management

### Year 1

Five cuts, collect arisings and remove from Site.

Use a weed wipe three times in year 1 to kill off weeds—spear thistle, creeping thistle, broad-leaved dock, clustered dock, wood dock, curled dock, nettle, ragwort, and others according to ECoW recommendations. Operatives must be proven competent in identifying.

### Years 2 onwards

Cut once per month, or once every two weeks during the growing season. Leave for 5 weeks in June.

Arisings should be collected and removed from site.

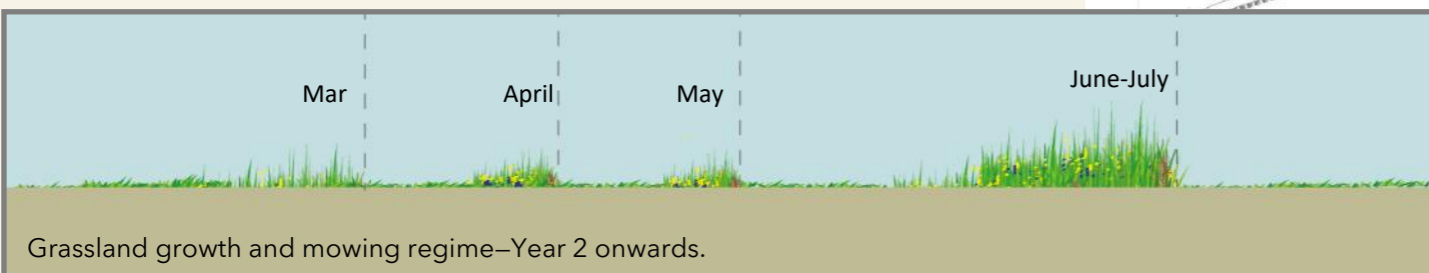
## Monitoring

ECoW to conduct monitoring visit in years 1, 3 and 5, to record relative cover values according to Condition Assessment Criteria targets.

**Output** ECoW report, years 1, 3 and 5.

### Remedial action options

- Cut hard, scarify and reseed (in autumn) any areas that are failing to support a minimum of 6 species of higher plant per m<sup>2</sup>. ECoW to advise and direct.
- Spot treatment of scrub or bracken if required.
- Localised weed control.
- Soil decompaction and re-sowing with wildflower seed if bare ground cover exceeds 10% from access damage.
- Periodic collection of arisings under the instructions of the ECoW.
- Immediate treatment and removal of INNS.



# Roosting Boxes for Bats

**Rationale** Ready-made roosting boxes will be incorporated into building walls to provide shelter and breeding sites of declining bats.

## Integrated bat boxes

### Specification

**No.**

Vivara Pro Build-in  
WoodStone Bat Box

5



Or equivalent approved by the Ecological Clerk of Works

### Notes

Sited as high as possible, ideally directly under the eaves or verges, with good access to unlit vegetated tree cover/gardens.

Where possible, southern elevations have been selected.

Boxes will not be installed directly above windows.

Front elevations, and those fronting onto roads have been avoided, in order to reduce light spill onto boxes.

**When erected?** During construction.

<https://www.nhbs.com/vivara-pro-build-in-woodstone-bat-box>



# Nesting Boxes for Birds

**Rationale** Ready-made nesting boxes will be incorporated into building walls to provide shelter and breeding sites of declining birds such as swifts, starling and house sparrow. Since swifts are colony species they are best installed in groups of three high under eaves in the

## Specification

Manthorpe Swift Brick

## No.

10\*



## Notes

\* swift boxes to be installed in groups of two on a single elevation. One marker = 2 boxes.

All boxes to be built directly into the fabric of new walls.

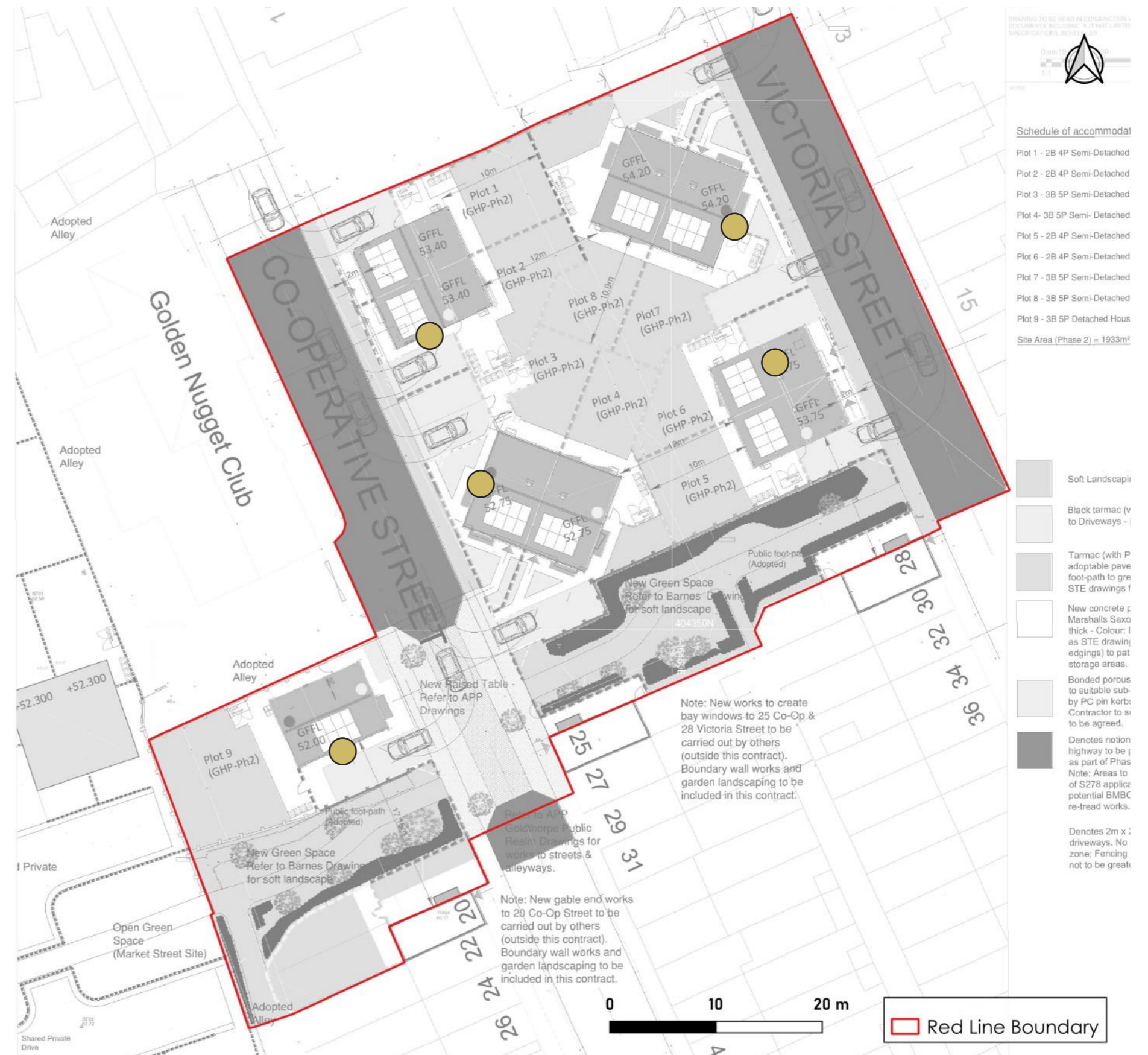
Installed as high up on building as possible, ideally directly below the verges of gables.

Boxes will not be positioned above windows, to prevent potential conflict with new homeowners.

Boxes will be positioned so that entrance holes have clear flight lines.

**When erected?** During construction of building.

<https://www.nhbs.com/manthorpe-swift-brick>



# Hedgehog Highways

## Rationale

Hedgehogs have seen significant declines over the last few decades, with habitat loss being one of the major factors.

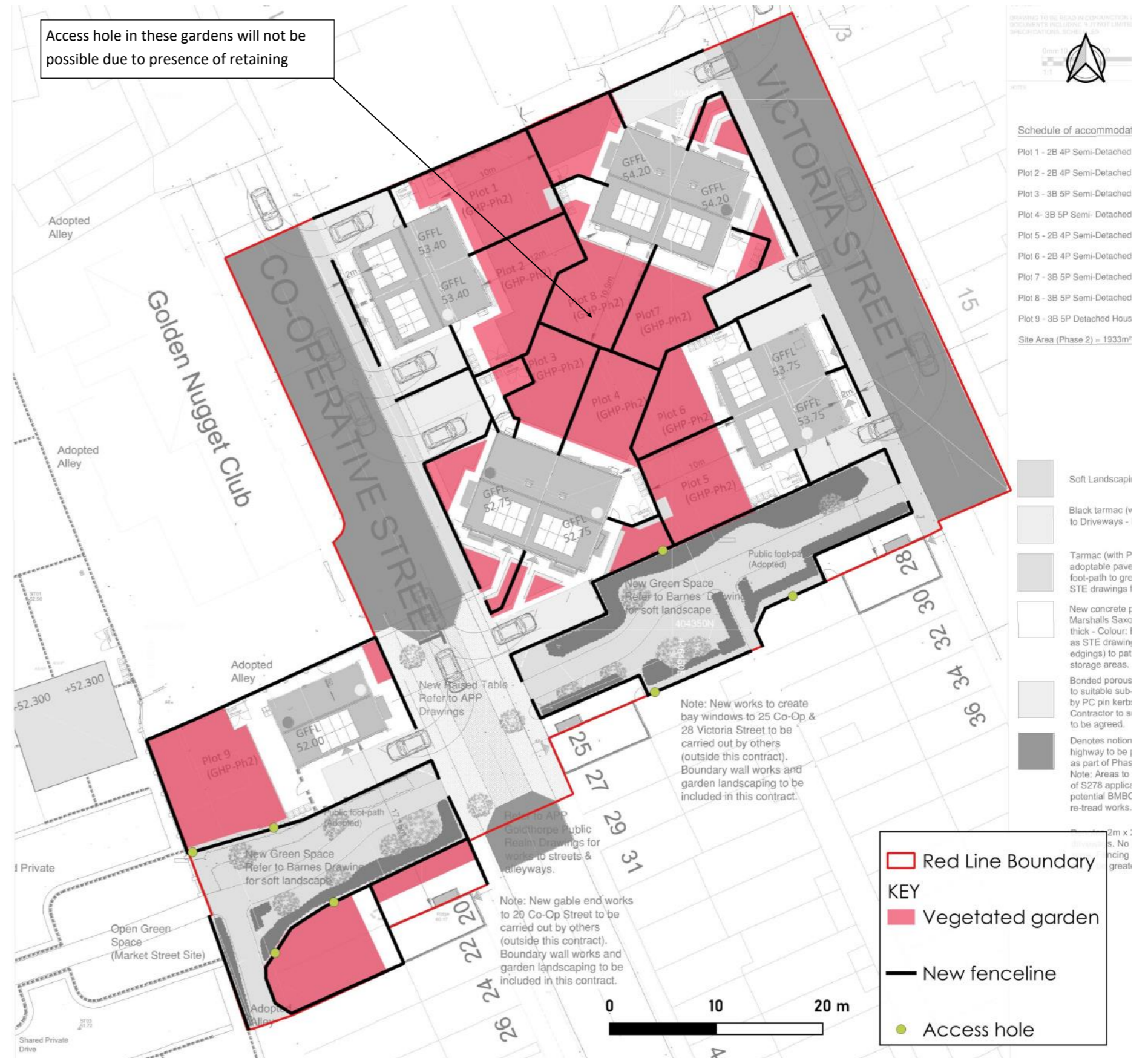
New POS and private gardens provide good habitat for hedgehogs and, whereas previously these gardens were accessible to this species by virtue of hedgerow planting, a shift in industry practice to hard borders (fences and walls) has inadvertently excluded hedgehog from this extensive foraging resource. Simply providing a means of access into and between these new gardens and POS can very easily and cheaply increase the amount of habitat available to hedgehog, as shown in the figure opposite.

## Specification

At least one hedgehog access hole (measuring at least 13cm x 13cm) will be installed in each new garden and boundary fence line, allowing gardens to remain connected.

This will be done by contractors during the fences' installation. These will be either purpose-made panels such as those supplied by Jackson Fencing, or be cut into standard fences by contractors during installation. Where concrete gravel boards are used, either purpose-built ramps to access holes in the fence panels or underpasses beneath the boards will be made.

All holes will be labelled 'Hedgehog Highway' (see photos below) so homeowners know why they are there. This will reduce the risk of holes being sealed.



# Timeline

Task	ECoW to direct	ECoW to carry out	Year 1	Year 2	Year 3	Year 4	Year 5 +
Seeding and planting of new grassland areas			September–November				
Manage wildflower grassland (mowing)	Yes (in year 1-2)			April-Sept			
Install bird and bat boxes (buildings)			Prior to first occupation				
Install hedgehog access			As built				
ECoW verification faunal boxes		Yes	As built	As built			
ECoW Monitoring		Yes	Yes Report to LPA on 1st November		Yes Report to LPA on 1st November		Yes Report to LPA on 1st November