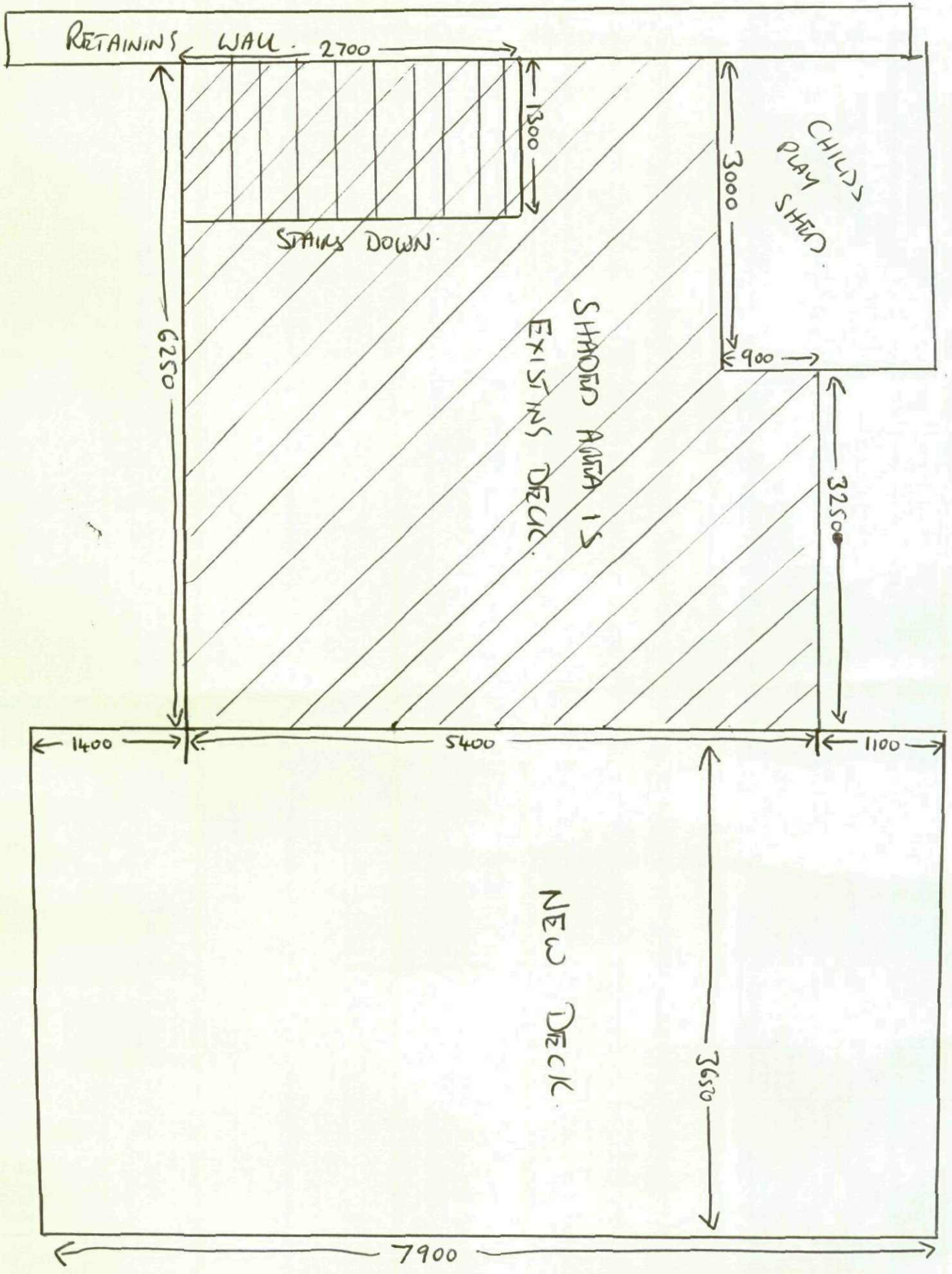


NO DRAWINGS TO SCALE.

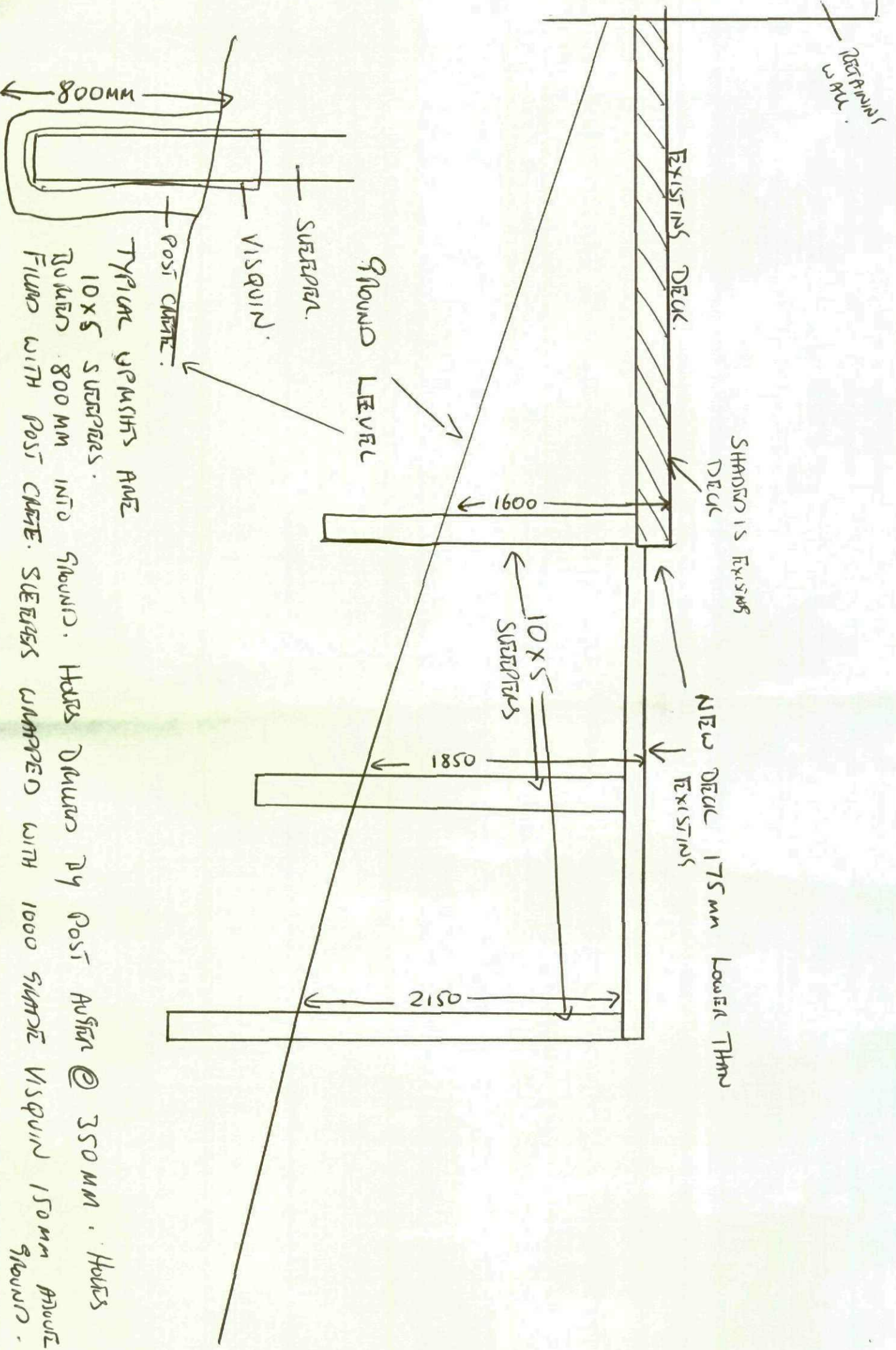
TOP ELEVATION



NO DIMENSIONS TO SCALE

SIDE ELEVATION.

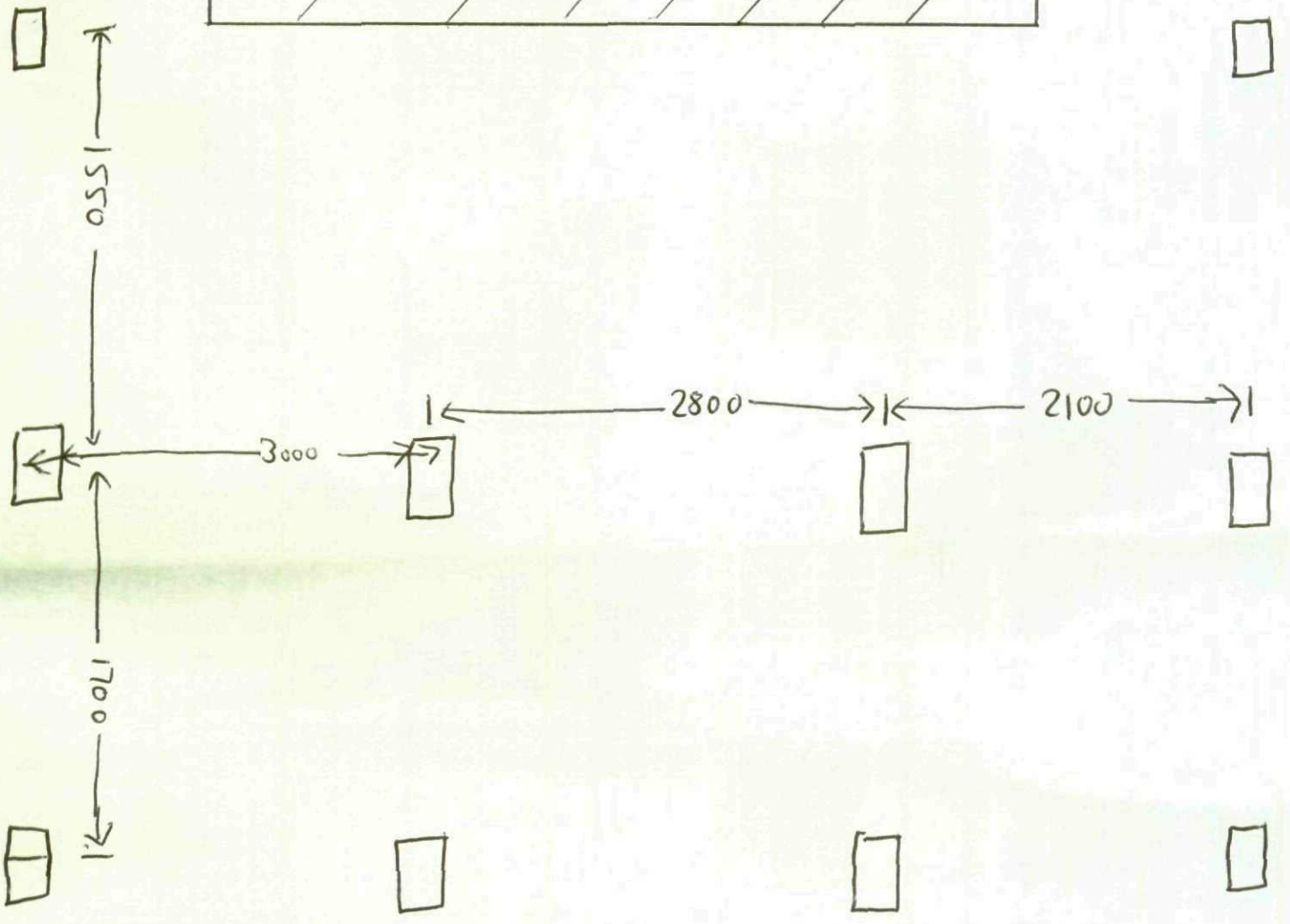
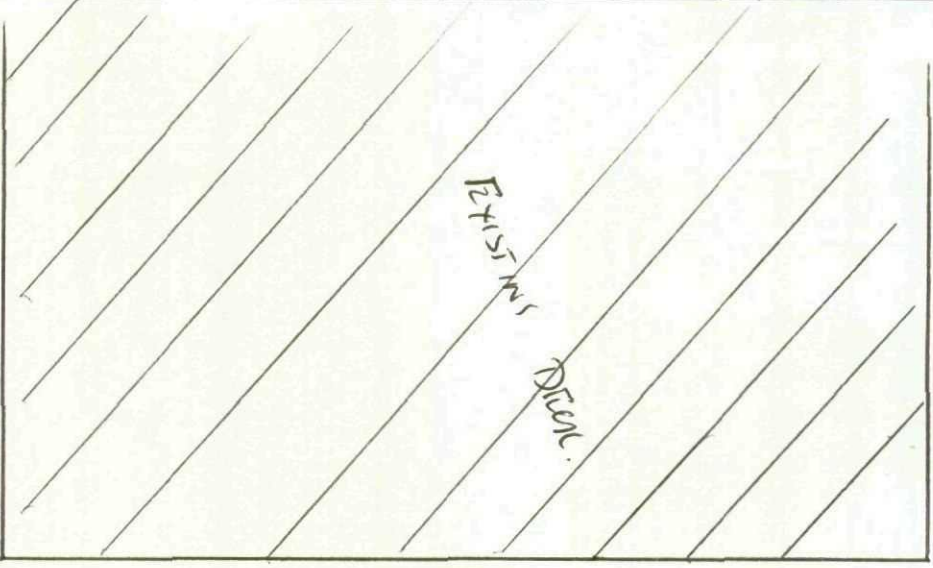
(2)



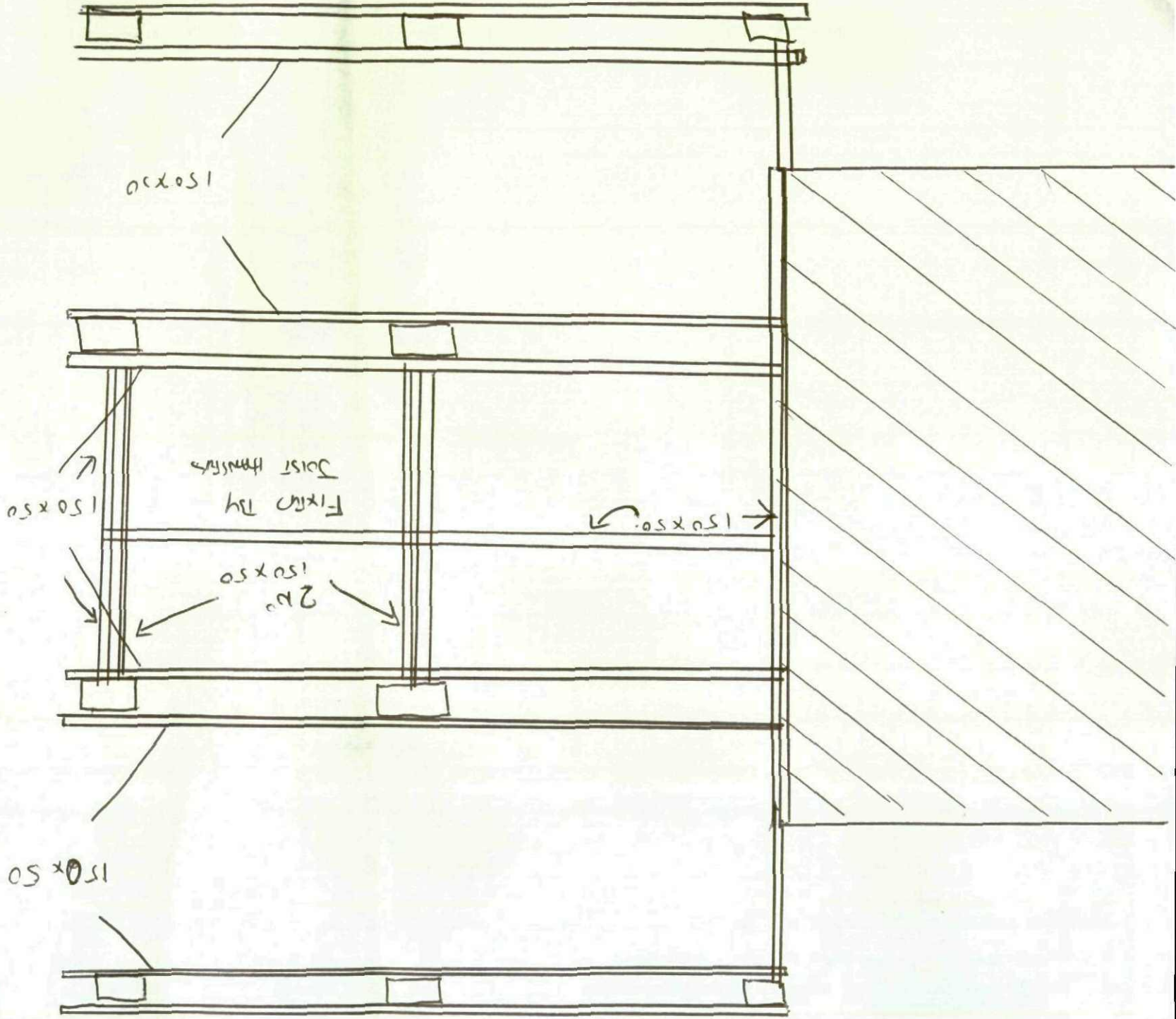
NO DRAWINGS TO SCALE.

SLEEPER LAYOUT.

(3)

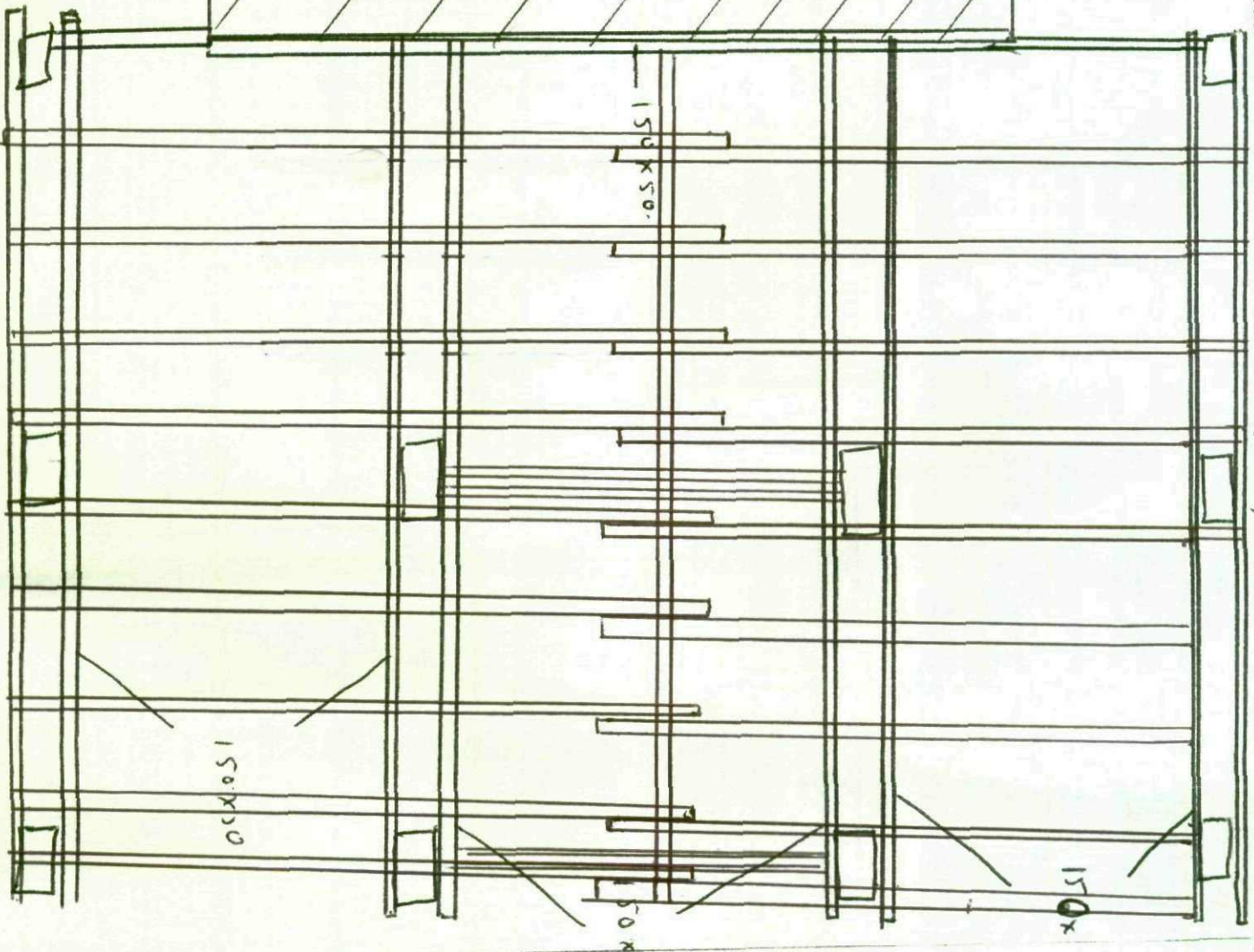


THESE JOISTS ARE 150x50
 TUNNELING. THEY ARE FIXED
 TO THE SURFACES BY 2^{NO} 150x12
 COACH SCREWS AT EACH SURFACE. THERE IS A 4MM
 50x50 SQUARE WASHING BEHIND EACH
 HEAD TO PREVENT DAMAGING TO SOILS.



NO DRAWINGS TO SCALE

SECONDARY SOISTS



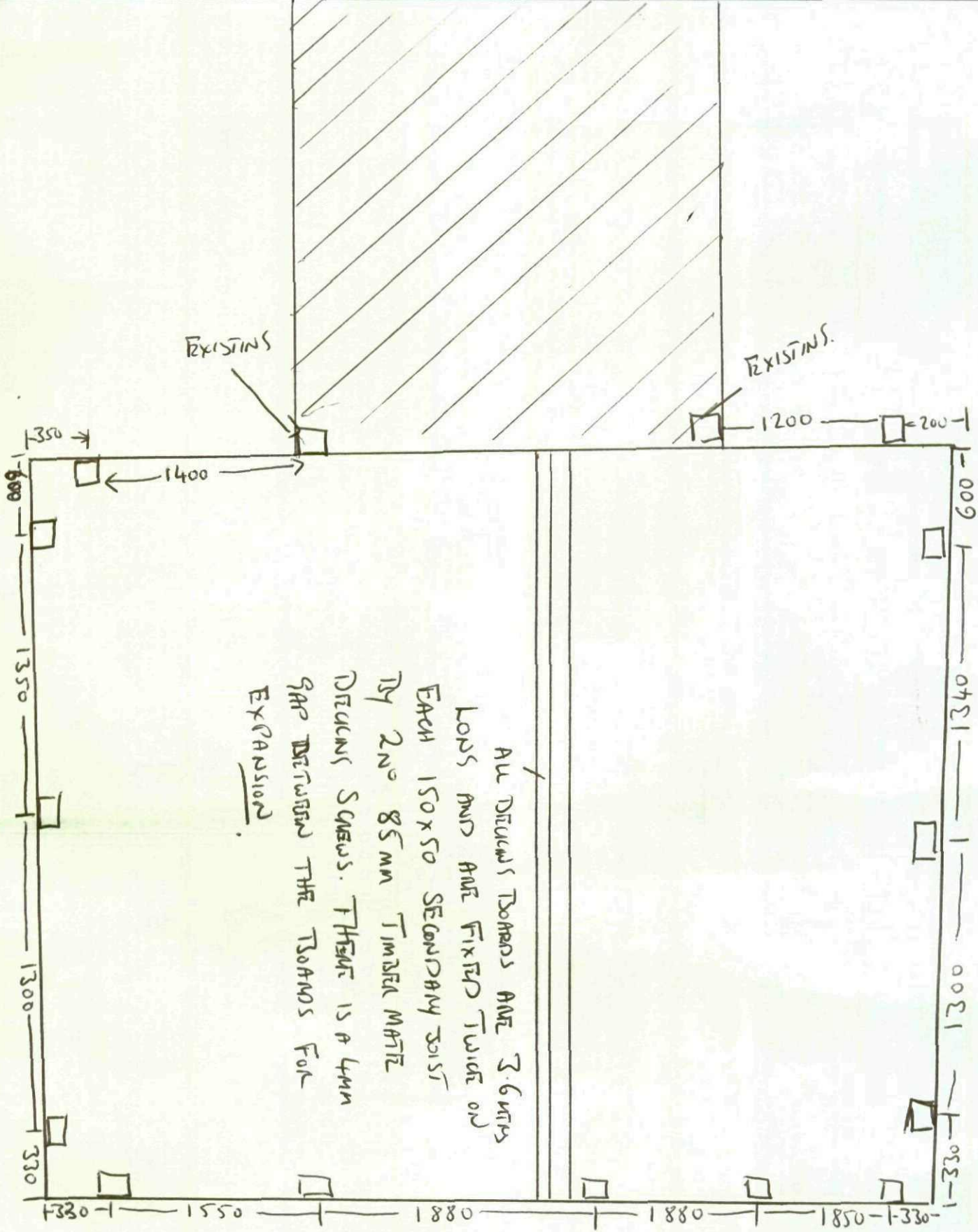
(5)

ALL SECONDARY SOISTS ARE 150 X 50 THUNDERBOLT THEY ARE FIXED BY 4" NAILS AND THE OVER HANG IN THE MIDDLE IS 150 MM PAST THE CRUTER SOIST. AT THIS POINT THE SOIST'S ARE BOLTED TOGETHER WITH 10MM THUNDERBOLT WITH A 50X50 4MM GALVANIZED WASHWAS AT THE TRAIL OF EACH NUT.

NO DRAWINGS ARE TO SCALE.

DECANS BOARDS + HANDRAIL POSIS.

(6)



ALL DECANS BOARDS ARE 3.6 METERS
 LONG AND ARE FIXED TWICE ON
 EACH 150 X 50 SECONDARY JOIST
 BY 2ND 85 MM TIMBER NAIL
 DECANS SCREWS. THERE IS A 4MM
 GAP BETWEEN THE BOARDS FOR
 EXPANSION.

ALL HANDRAIL
 POSIS ARE 100 X 100
 PSE. THEY ARE
 BOLTED TO THE
 150 X 50 SECONDARY
 JOISTS WITH 10MM
 THUNDER BAR
 WITH 50 X 50MM
 SQUARE GALVANIZED
 WASHERS BEHIND
 EACH NUT.

NO DRAWINGS TO SCALE.

HANDMADE

⑦

