

FIRE PRECAUTIONS

All areas, except w.c.s, to be covered by smoke detectors, BS5839 part 1, type L1.
 All areas except stores, including external exit routes, to be covered non-maintained emergency lighting system to BS5266 certified on completion with a 3 hr duration.
 kitchen to be covered by heat detectors, to BS5839 part 1, type L1.
 ☉ denotes Break glass call points to comply with F5926, E illuminated fire exit sign, additional signs as required by Fire Officer Push Bar with "Push Bar to Open" sign, concrete pads to be provided outside fire escapes, to extend 150 mm beyond leading edge of door 2 gal. Water extinguisher 1.4 kg CO2 extinguisher, Fire Blanket Dry powder extinguisher Push button locks, automatically released by fire alarm/power failure.
 All walls have min. 30 min fire resistance with fire stopping to u/s of ceiling
 emergency exit doors to be 1050mm clear opening, fitted with panic bars o.e.a.
 Surface spread of flame to be Class 0 in circulation areas & Class 1 elsewhere.
 All fire escape doors to have ramped or level approach with level threshold
 All signs to be to BS1635 1990.
 All furniture and furnishings to be fire resistant to BS5852 & BS5867.
 All alarms to be audible and visual.
 All glazed panels within protected means of escape to be 1/2hr fire resistant.
 Columns & rafters on boundaries to be clad with 10mm Superlux

ROOF CONSTRUCTION

Kingspan proprietary plastic coated profile sheeting, insulated double skinned, warm roof system, with 70mm core insulation between skins o.e.a., on steel purlins, (see Struct. Eng. Calcs) on steelwork.

150mm dia. p.v.c. guttering with 150mm dia. p.v.c. R.W.P.s.

Building to be un-heated no internal rooms within building
 all staff facilities within existing buildings
 Conditional approval required for SBEM calcs for lighting system

DRAINAGE

w.c to have 100mm dia. pvc S&VP with birdproof mesh cage min. 900mm above any opening lights, 32mm dia. pvc waste from w.h.b. with 75mm deep re-sealable traps, discharging into S&VP
 Below ground drainage to be 100mm dia. flexible jointed pipes, max. 1:40 grad. bedded on & surrounded with 150mm pea gravel, new drains to connect into existing m.h. new m.h. to be G.R.P. pre-formed on concrete base.

All accesses & egresses to have level areas to comply with AD part M
 sanitary accommodation provided within unit, sanitary accommodation within existing staff room, disabled w.c. situated at ground floor with ramped entrance disabled parking provided within existing carpark area

MECHANICAL VENTILATION

disabled w.c to have mechanical extractor fans, ducted to external air to give 15 l/sec air change, connected to lightswitch with 15min. overrun.

All dimensions & sizes to be checked on site prior to work commencing
 All steelwork to be painted with Envirograf intumescent coating to BS 476 part 20 to give max. 60min. fr. new personnel doors to be insulated, with push bar panic bolts fitted, with level landing.
 fire exit signs above doors, with fire alarm call point along side.

boundary wall to be clad internally with superlux o. e. a. to give 60min. fire protection.

level landing to all entrance/exit doors with 15mm threshold ramped entrance min. 900mm wide, max. 1 in 12 gradient,

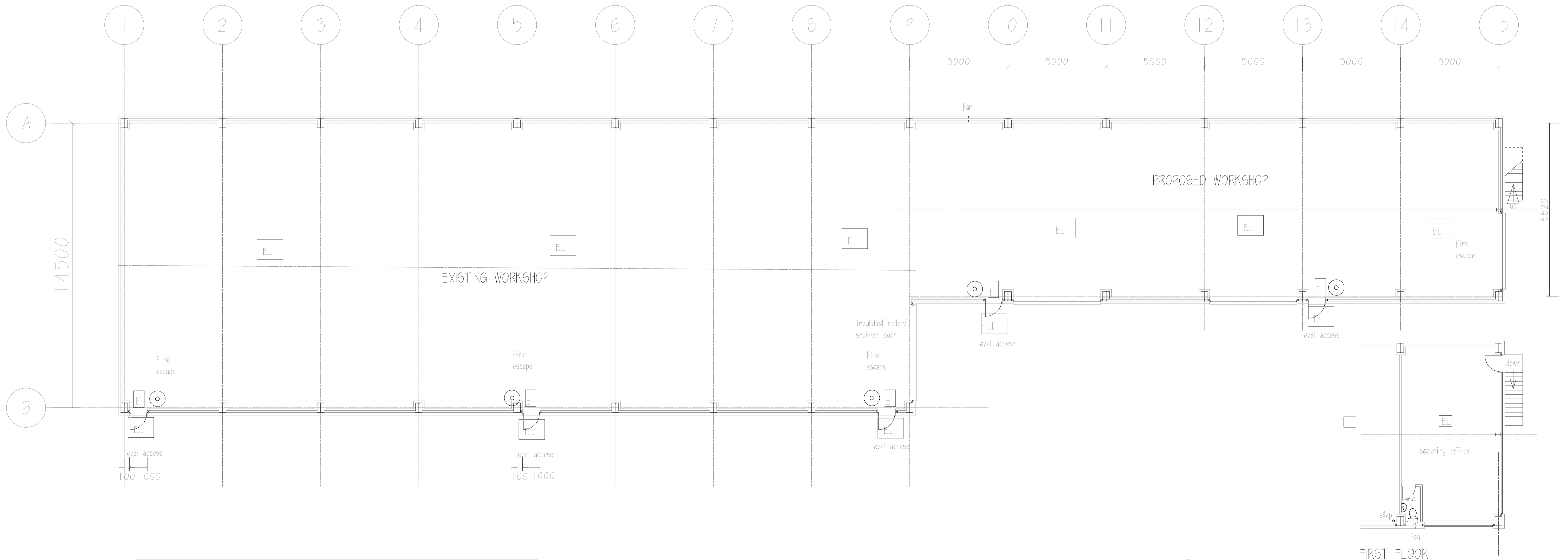
FOR ALL DETAILS OF STEELWORK, FOUNDATIONS & GROUND SLAB DETAILS SEE STRUCTURAL ENG. DWGS.
 fabric of building to comply with robust details

SIDE CLADDING

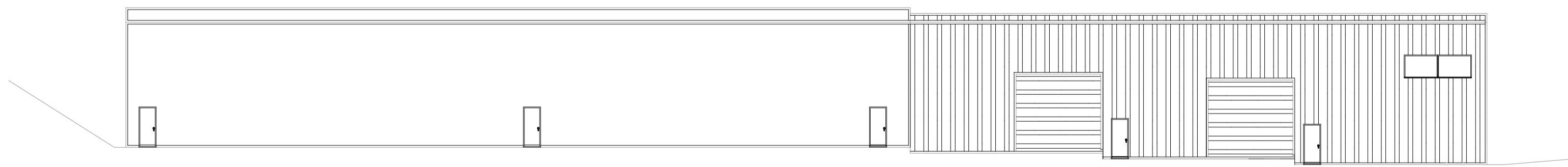
Quadron double skin vertical cladding fire wall system Fixed to manufacturers spec.

ROOF & SIDE CLADDING

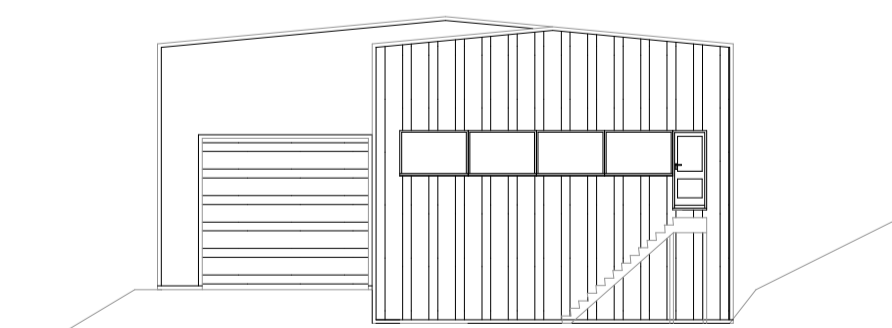
profiled sheeting to match existing WALLS
 brickwork to match existing



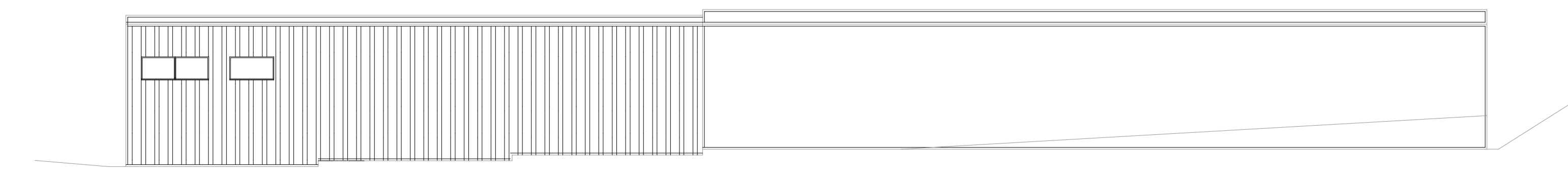
FIRST FLOOR



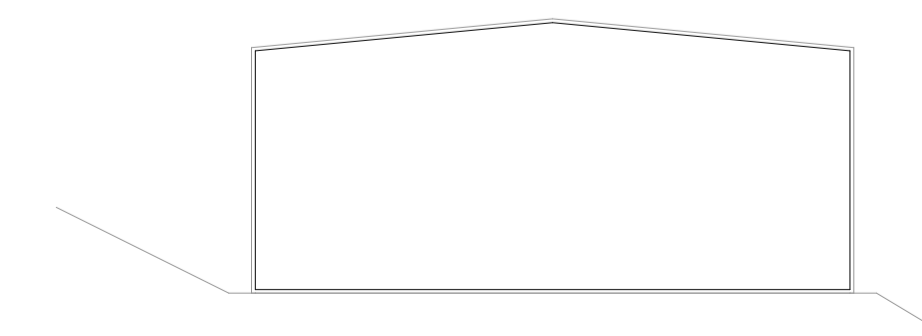
SIDE ELEVATION



FRONT ELEVATION



SIDE ELEVATION (ROAD)



REAR ELEVATION

C. SOAR & SONG LTD
 WORKSHOP EXTENSION
 OLD TANK ROW
 OFF GRANGE LANE
 STAIRFOOT

PLAN & ELEVATIONS

1:100, 1:200 @ A15EPT16 Rev E

Peter Thompson

Linwood
 Barnsley Road
 Dodworth
 Barnsley S753JR

M.B.I.A.T.
 tel 01226
 201391