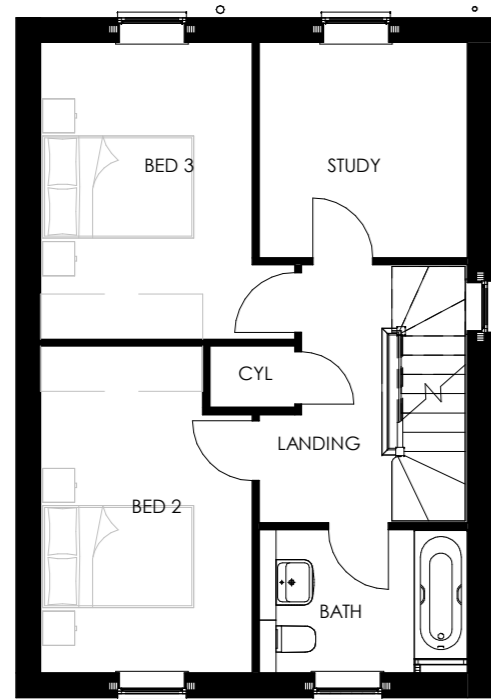
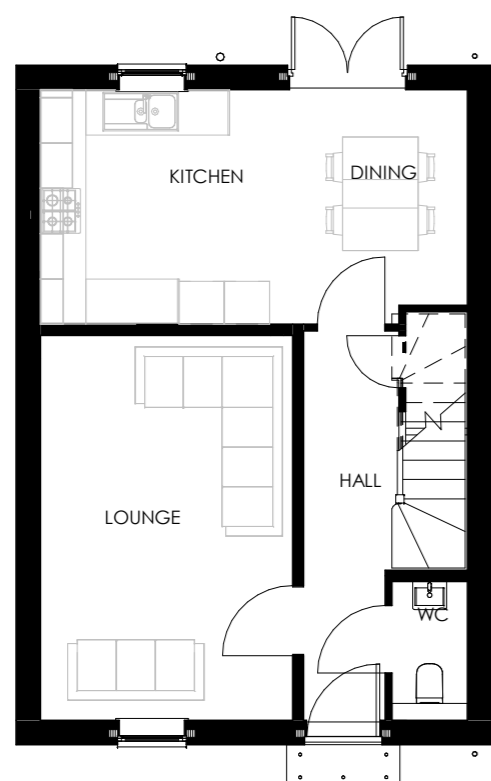


SECOND FLOOR  
1 : 100



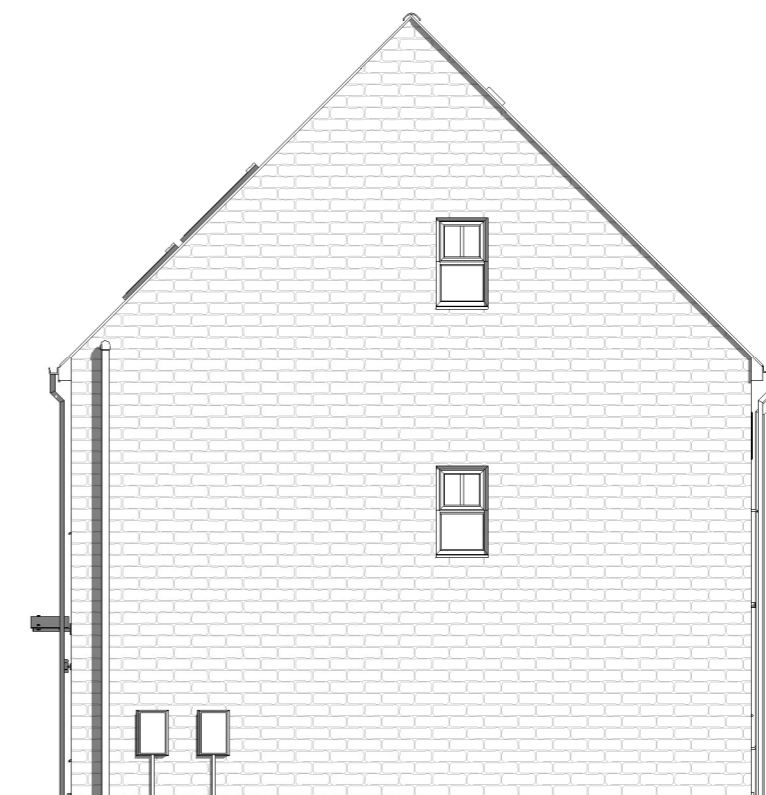
FIRST FLOOR  
1 : 100



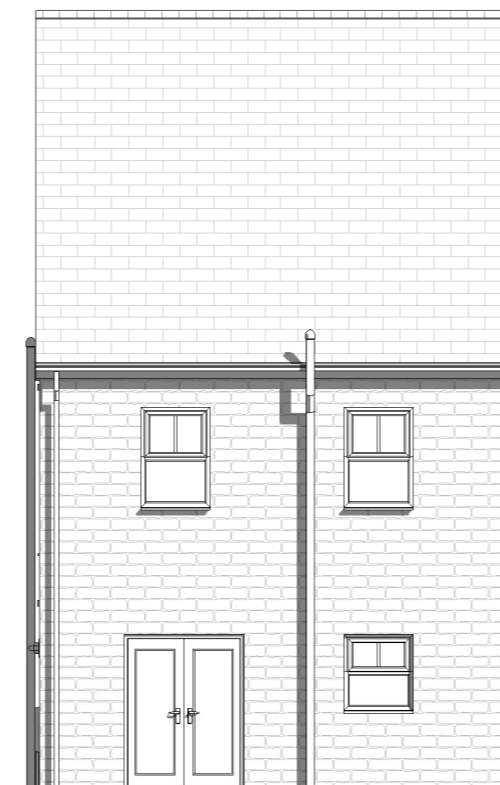
GROUND FLOOR  
1 : 100



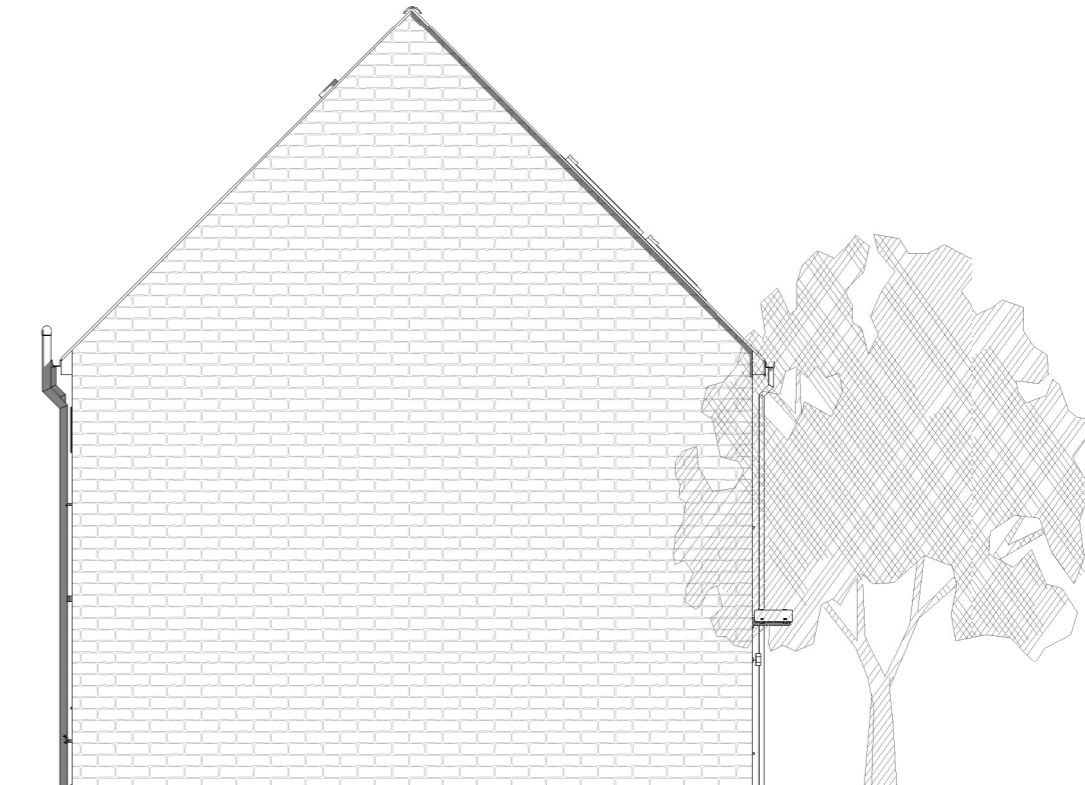
FRONT ELEVATION  
1 : 100



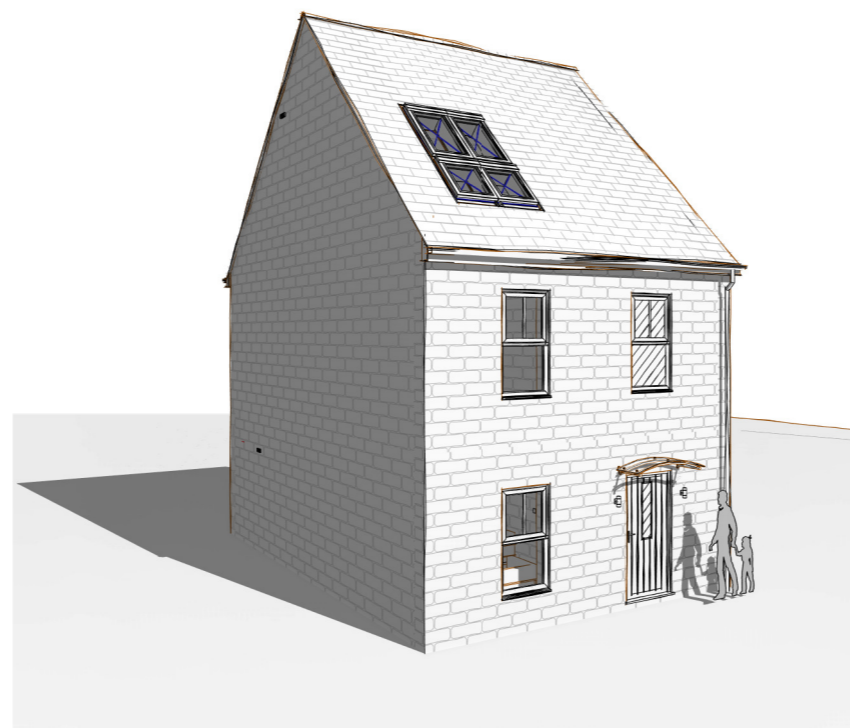
SIDE ELEVATION  
1 : 100



REAR ELEVATION  
1 : 100



SIDE ELEVATION  
1 : 100



3D VIEW

NATIONAL SPACE STANDARD NET INTERNAL AREA REQUIREMENT FOR:	
BEDROOMS:	<b>3</b>
BED SPACES:	<b>6</b>
AREA REQUIREMENT:	<b>108-SQ M</b>
<b>OPORTO (AS)</b>	HOUSE TYPE CODE: <b>MY P - 412</b>
Title: PLANNING - STONE	SCALE @A2 - 1 : 100
<b>125-SQ M</b>	Drawn: RH
<b>1345-SQ FT</b>	Checked: MB
	Dwg No: 101

**WARNING TO HOUSE PURCHASERS - PROPERTY MIS DESCRIPTIONS ACT 1991**  
Buyers are warned that this is a working drawing and the contents of the drawing may be subject to change at any time and alterations and variations can occur during the build process. As such the layout, form, content and dimensions of the finished construction may differ materially from those shown. Whilst we make every effort to ensure our drawings are up to date there may be from time to time an unavoidable delay in updating these due to changes in regulations and/or re-planning. Purchasers are advised to check with the sales negotiator whether any alterations have been made to the drawing. The contents of the drawing do not constitute a contract, part of any contract or warranty.

Strata Homes Limited,  
quay point, lakeside,  
Doncaster, DN4 5PL  
[www.stratahomes.co.uk](http://www.stratahomes.co.uk)  
T 01302 308508  
F 01302 308501

**strata**