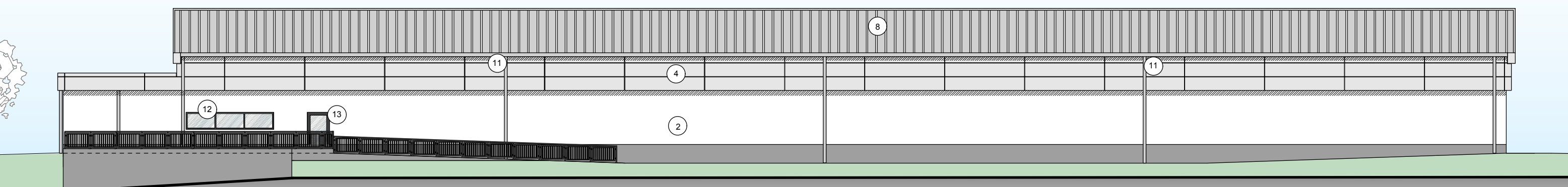
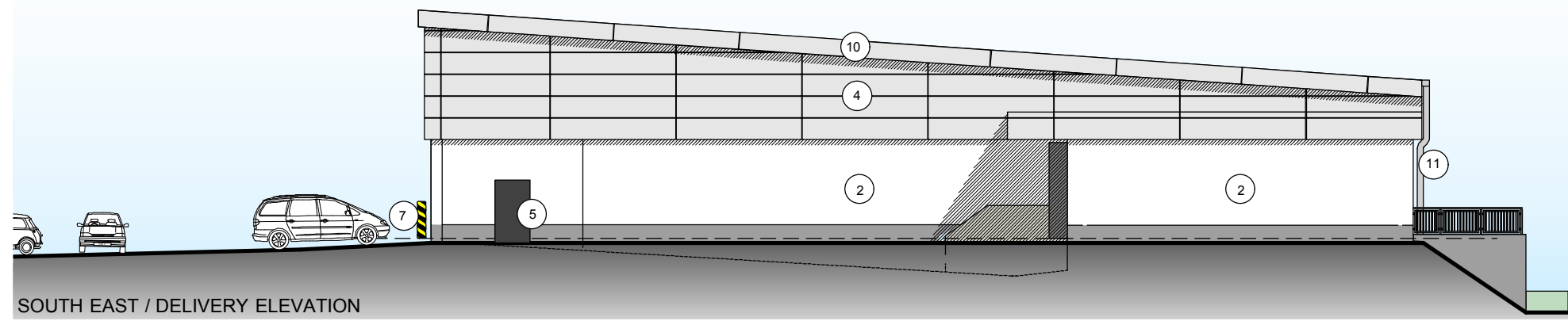


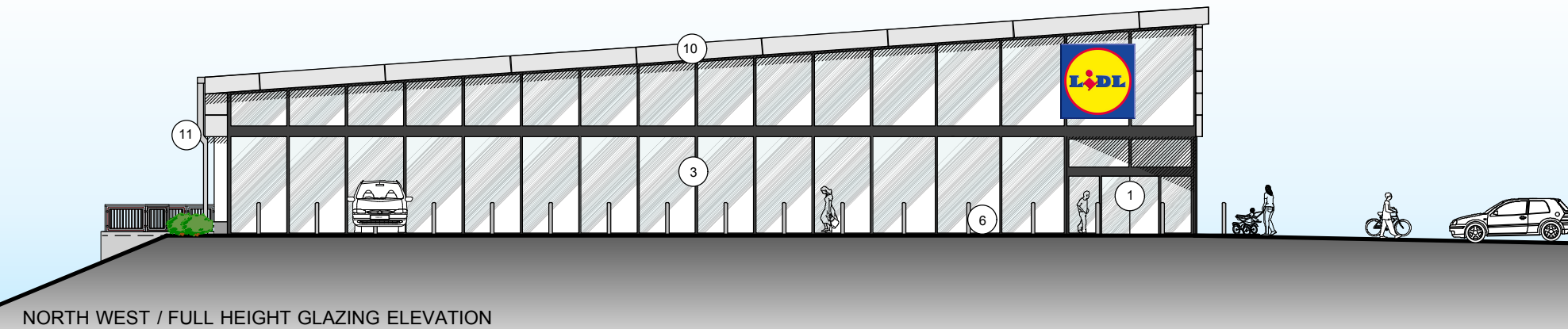
SOUTH WEST / FRONT ELEVATION



NORTH EAST / REAR ELEVATION



SOUTH EAST / DELIVERY ELEVATION



NORTH WEST / FULL HEIGHT GLAZING ELEVATION

**Materials Key**

- ① Powder coated aluminium framed entrance lobby with double glazed doors and screens  
Colour: Graphite Grey (RAL 7024)
- ② White (RAL 9010) grained finish rendered walls with Grey (RAL 7038) plinth.
- ③ Powder coated aluminium double glazed shopfront windows  
Colour: Graphite Grey (RAL 7024)
- ④ Alucobond cladding panels.  
Colour: Silver (RAL 9006)
- ⑤ Powder coated steel doors and frames  
Colour: Graphite Grey (RAL 7024)
- ⑥ Stainless steel bollards.
- ⑦ Steel HGV bollard painted yellow and black.
- ⑧ Pre finished aluminium raised seam cladded roof.  
Colour: Silver (RAL 9006)
- ⑨ Roller shutter door  
Colour: Graphite Grey (RAL 7024)
- ⑩ Alucobond eaves, soffits and gutter fascias.  
Colour: Silver (RAL 9006)
- ⑪ Powder-coated aluminium rups and gutters to match cladding.  
Colour: Silver (RAL 9006)
- ⑫ Powder coated aluminium double glazed windows  
Colour: Graphite Grey (RAL 7024)
- ⑬ Powder coated aluminium double glazed FE Door  
Colour: Graphite Grey (RAL 7024)
- ⑭ Powder coated aluminium double glazed windows with aluminium louvres  
Frame Colour: Graphite Grey (RAL 7024)  
Louvre Colour: Silver (RAL 9006)

| Rev | Date     | Description                | Drawn |
|-----|----------|----------------------------|-------|
| A   | 27/07/15 | Updated to Planning Status | LS    |

**htcarchitects**  
York Place Studio  
8 Britannia Street  
Leeds  
LS1 2DZ  
t: (0113) 244 3457  
w: www.htcarchitects.co.uk  
e: admin@htcarchitects.co.uk

client  
**Lidl UK GmbH**

project  
**New Store,  
Mitchells Way, Wombwell,  
Barnsley.**

drawing title  
**Proposed Elevations  
(New Type 14 LOF Store)**

date **June 2015**  
status **Planning Issue**  
scale **1:200 @ A3**  
drawn **PJD checked MH**  
job no. **1849** dwg no. **13** rev. **A**