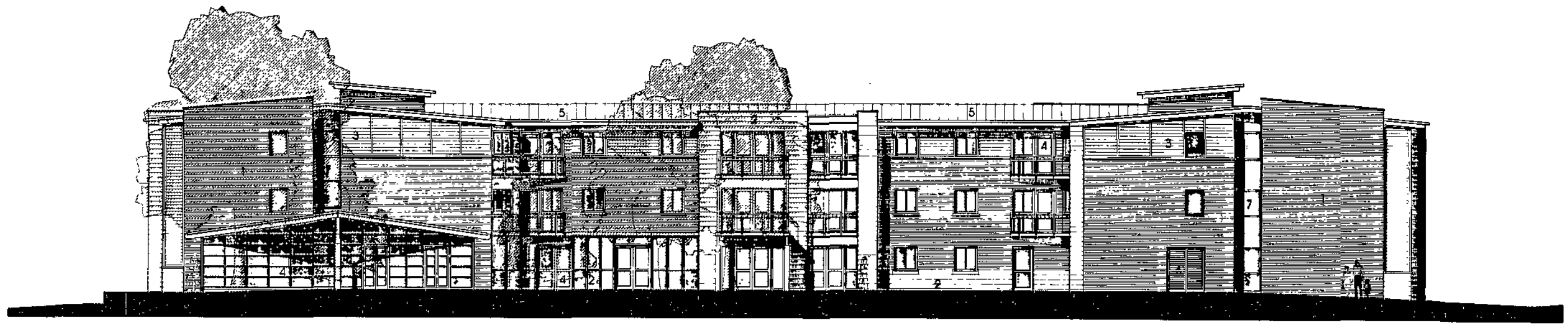
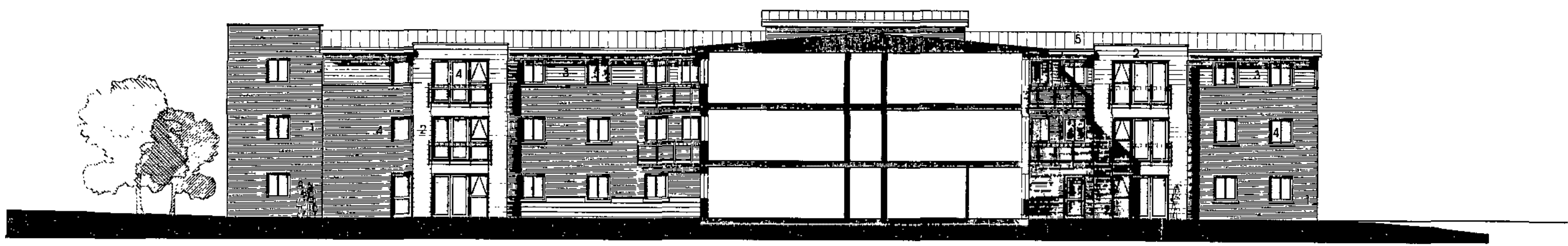


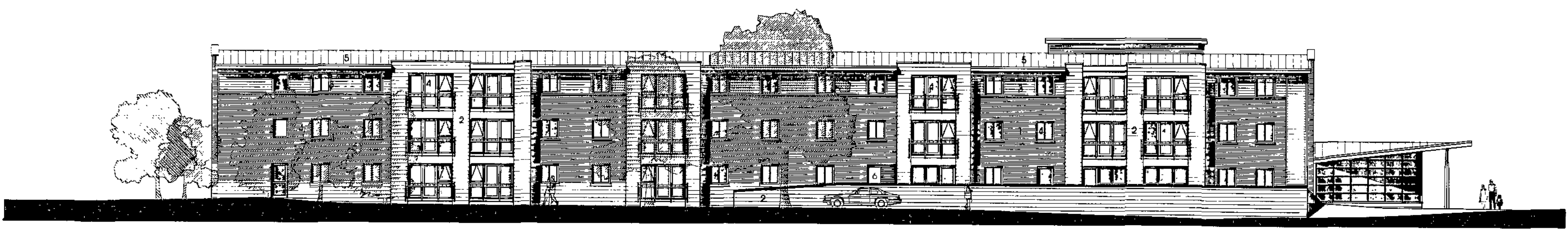
© Acornthorpe WSM Architects
 The general contractor is responsible for the verification of dimensions or site conditions and is to be informed of any discrepancy.
 The status of information contained in a computer copy of this drawing shall be limited to that conveyed by the paper copy.
 Revisions:
 Rev A: CDM: 24.06.2008
 General Arrangements
 Rev B: JG: 27.06.2008
 Amendments made to elevations



South Elevation



West Section/Elevation



West Elevation

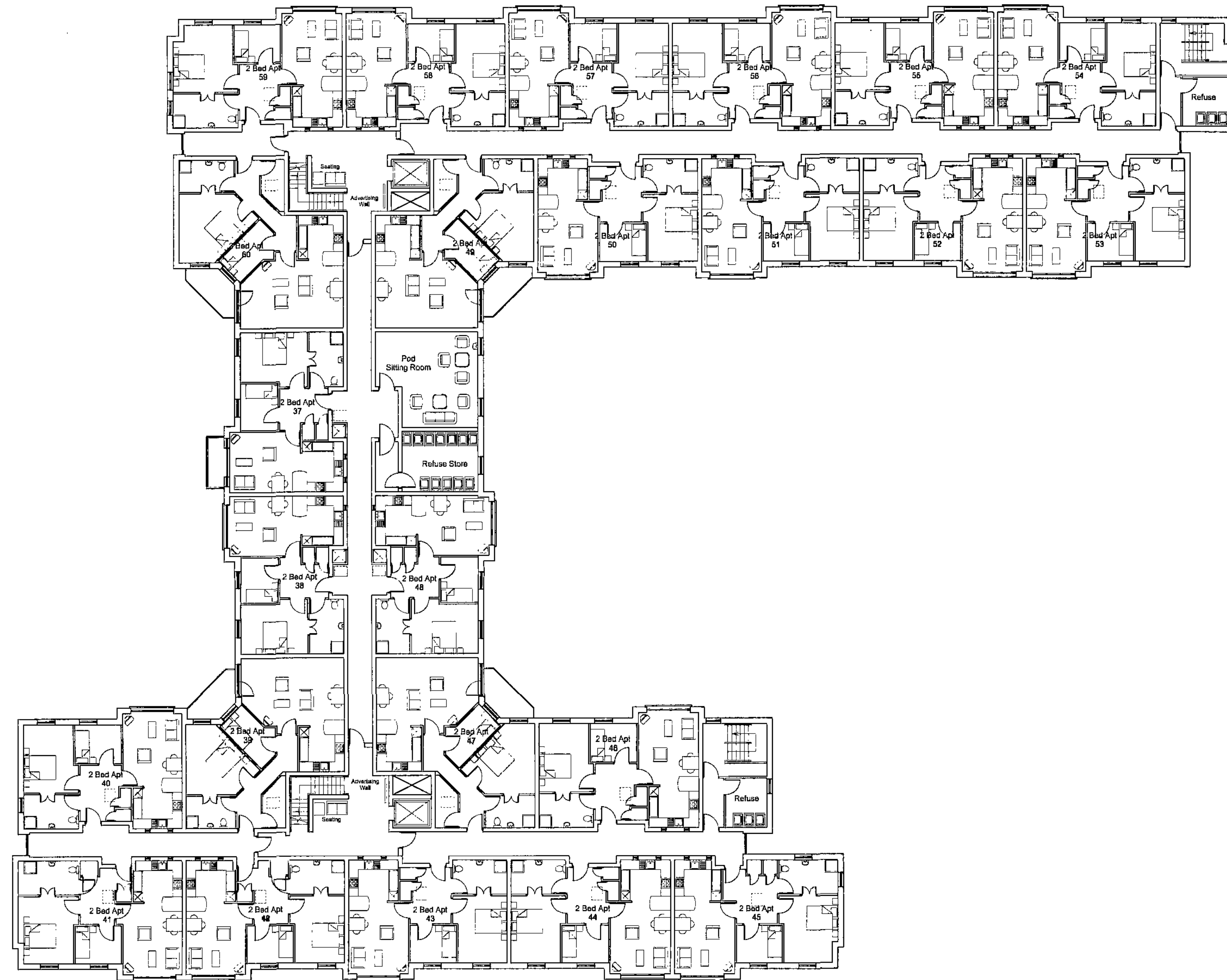
- 1. Brickwork
- 2. Blockwork
- 3. Timber boarding
- 4. Double glazed timber windows and doors
- 5. Standing seam metal roof
- 6. Timber Louves
- 7. Double glazed powder coated aluminium windows

Drawing status:
 approval
 construction
 preliminary
 record
 information
 contract
 issue

Scale: 1/200 @ A2
 Date: May 2008
 Drawn: C.G.Y.
 Design: 177316/111.B

Elevations
 Extra Care Scheme
 Saltersbrook, Goldthorpe





Schedule of Accommodation

Extra Care Scheme

Type A	2 Bed Apt.	77.54m ²	8no.
Type B	2 Bed Apt.	64.30m ²	51no.
Type C	1 Bed Apt.	52.78m ²	1no.
Total			60no.

Car Parking
54 Spaces (Inc. 6 disabled spaces)

Schedule of Areas

Extra Care Scheme

Gross Internal Area	
G Floor:	2180m ²
First Floor:	2120m ²
Second Floor:	2120m ²
Total	6400m²

Net Internal Area	
G Floor:	1713m ²
First Floor:	1654m ²
Second Floor:	1635m ²
Total	5002m² (78.16%)

Gross Internal Area (with exception of Apartments only)	
G Floor:	1400m ²
First Floor:	504m ²
Second Floor:	504m ²
Total	2408m²

© Acornus WSM Architects

The general contractor is responsible for the verification of dimensions on site and the architect is to be informed of any discrepancy.

The status of information contained in a complete copy of this drawing shall be related to that conveyed by the paper copy.

Revisions:

Revision A J.G. 22.10.07
Assisted bathroom, store and refuse collection area moved into the footprint of unit 48.

1st floor, bathroom area and over stairs removed to accommodate the repositioned apartment 48.

Windows on rooms with external access.

Windows removed from corridor adjacent to unit 44.

Corridor and window location amended between units 48&49.

Doors removed in corridor space.

Revision B J.G. 25.10.07
Schedule moved to drawing.

Revision C C.D. 20.08.08
Change door position to bathroom (all units).
Bathroom lock & window location. Window, window outside (all units) to be removed.

Revision D C.D. 20.08.08
Assisted bathroom changed to Pod Sitting Room.

Revision E J.G. 27.08.08
As plans amended.

Revision F J.K. 02.07.09
Schedule updated.

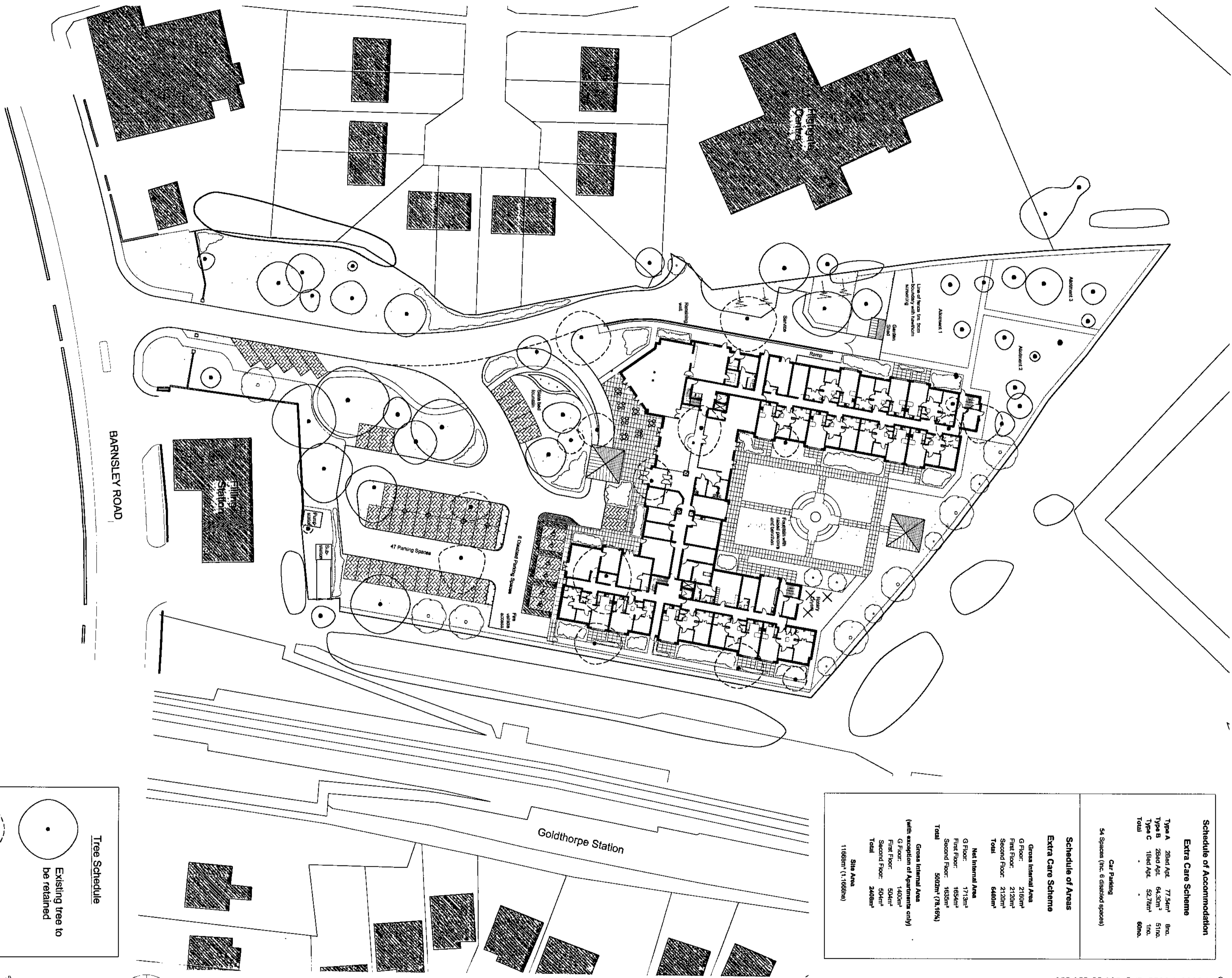
drawing status

- approved
- construction
- preliminary
- record
- information
- contract
- issue

Scale: 1:200 @ A2
Date: 22-10-07
Drawn: RJ
Checked: 1773/16/102.F

Second Floor Layout
Extra Care Scheme
Saltersbrook, Goldthorpe





Schedule of Accommodation

Extra Care Scheme

Type A	28th Apt.	77.54m ²	6no.
Type B	25th Apt.	64.50m ²	51no.
Type C	16th Apt.	52.70m ²	11no.
Total			68no.

Car Parking
54 Spaces (inc. 6 disabled spaces)

Schedule of Areas

Extra Care Scheme

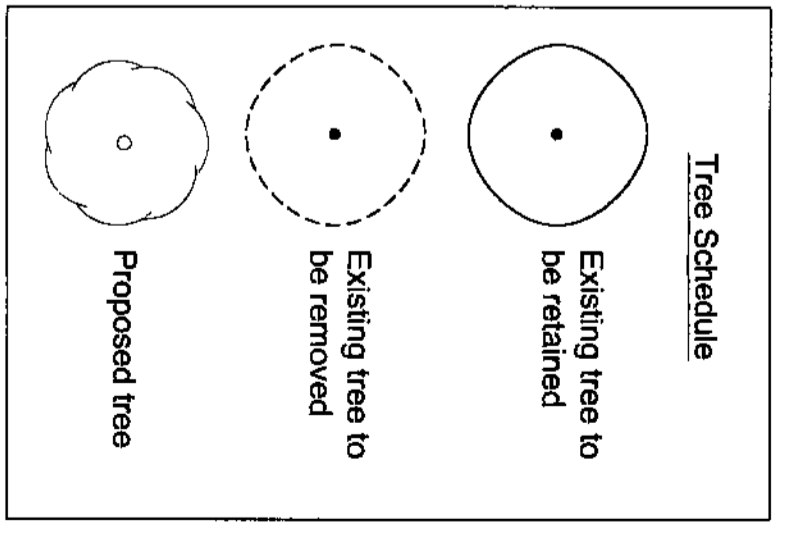
Gross Internal Area	
G Floor:	2160m ²
First Floor:	2120m ²
Second Floor:	2120m ²
Total	6400m²
Net Internal Area	
G Floor:	1713m ²
First Floor:	1654m ²
Second Floor:	1653m ²
Total	5020m² (78.16%)
Gross Internal Area (with exception of Apartments only)	
G Floor:	1400m ²
First Floor:	584m ²
Second Floor:	584m ²
Total	2568m²
Site Area	11660m² (1.166ha)

© Architectural Services

The general contract is a contract for the design and construction of the building and its contents. It is not a contract for the design and construction of the building and its contents. It is a contract for the design and construction of the building and its contents.

The total of information contained in a contract is to be taken as the total of information contained in the contract. It is not to be taken as the total of information contained in the contract.

Architect: J.A. Salisbury
 Structural Engineer: J.A. Salisbury
 Mechanical Engineer: J.A. Salisbury
 Electrical Engineer: J.A. Salisbury
 Civil Engineer: J.A. Salisbury
 Quantity Surveyor: J.A. Salisbury
 Project Manager: J.A. Salisbury
 Date: 17/11/2009



Site Plan
Extra Care Scheme
Salisbury Brook, Goldthorpe

PROPOSED: ARCHITECTURAL SERVICES (ARCHITECTS) LTD. TEL: 0113 292 3414, FAX: 0113 292 3408, E: J.A.S@ARCHITECTURALSERVICES.CO.UK



CLIENTS DATA

OPERATION	CONSTRUCTION
COMPLETION	PROVISION
ISSUE	CONTRACT
NUMBER	NUMBER

Scale: 1:500 @ A2
 Date: April 2008
 Drawn: J.A.S.
 Checked: J.A.S.



Schedule of Accommodation			
Extra Care Scheme			
Type A	2Bed Apt.	77.54m ²	8no.
Type B	2Bed Apt.	64.30m ²	51no.
Type C	1Bed Apt.	52.78m ²	1no.
Total			60no.
Car Parking			
54 Spaces (Inc. 6 disabled spaces)			
Schedule of Areas			
Extra Care Scheme			
Gross Internal Area			
G Floor:		2160m ²	
First Floor:		2120m ²	
Second Floor:		2120m ²	
Total		6400m²	
Net Internal Area			
G Floor:		1713m ²	
First Floor:		1654m ²	
Second Floor:		1635m ²	
Total		5002m² (78.16%)	
Gross Internal Area (with exception of Apartments only)			
G Floor:		1400m ²	
First Floor:		504m ²	
Second Floor:		504m ²	
Total		2408m²	

© Acornus WSM Architects

The general contractor is responsible for the verification of dimensions on site and the architect is to be informed of any discrepancy.

The scale of information contained in a complete copy of this drawing shall be limited to that conveyed by the paper copy.

Revision

Revision A J.G.W. 22.10.07

01 - Check window eaves between snug and sitting area

End of corridor between apartment 7 and 10 entrance

Revision B J.G.W. 23.10.07

Revised schedule of accommodation & schedule of areas tables to show apartment mix and space areas with exception of apartments

Revision C C.P.P. 20.04.08

Revised area tables to show rooms (off site)

Revised area & covered section between workshop cabinet (off site)

Revised area & office area (off site)

Revised area & office area (off site)

Revision D C.P.P. 20.04.08

Lounge, staff and guest room added

Clear wall and coffee bar added to sitting area

Staff training area (off site) to multifunction room

Revision E J.G. 22.08.08

GA plans completed

Revision F J.G. 02.07.08

Scale update

drawing sheet

approved

construction

partially

record

information

contracted

owner

Scale 1:200 @ A2

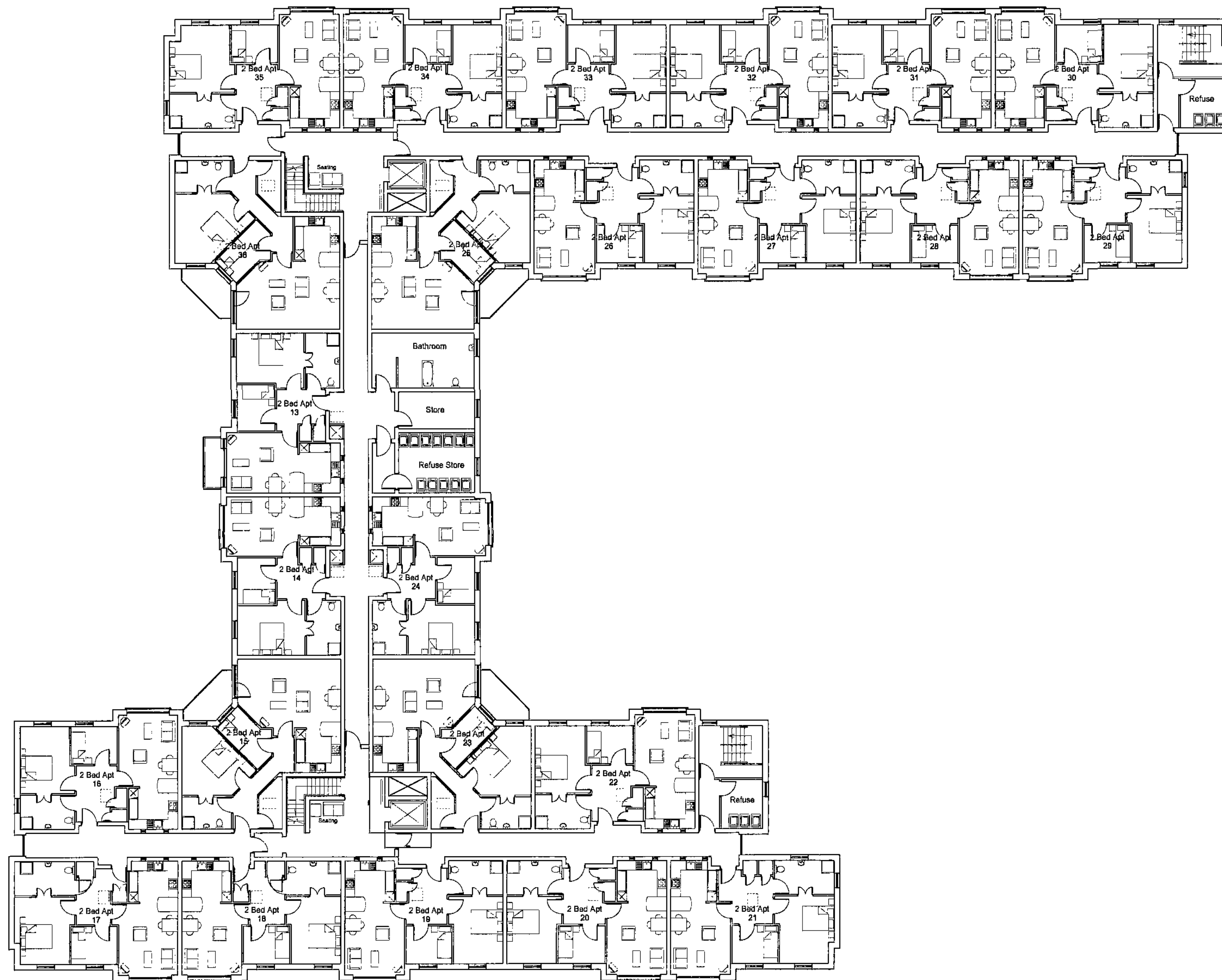
Date 22.10.07

Drawn RJ

Checked 1773/16/100 F

Ground Floor Layout
Extra Care Scheme
Saltersbrook, Goldthorpe





Schedule of Accommodation			
Extra Care Scheme			
Type A	2Bed Apt.	77.54m ²	8no.
Type B	2Bed Apt.	64.30m ²	51no.
Type C	1Bed Apt.	52.78m ²	11no.
Total			69no.
Car Parking			
54 Spaces (inc. 6 disabled spaces)			
Schedule of Areas			
Extra Care Scheme			
Gross Internal Area			
G Floor:		2160m ²	
First Floor:		2120m ²	
Second Floor:		2120m ²	
Total		6400m²	
Net Internal Area			
G Floor:		1713m ²	
First Floor:		1654m ²	
Second Floor:		1638m ²	
Total		5002m² (78.16%)	
Gross Internal Area (with exception of Apartments only)			
G Floor:		1400m ²	
First Floor:		504m ²	
Second Floor:		504m ²	
Total		2408m²	

© Acornthwaite WSM Architects

The general contractor is responsible for the verification of dimensions on site and the architect is to be informed of any discrepancy.

The status of information contained in a computer copy of the drawing shall be printed first conveyed by the paper copy.

Revisions:

Revision A - J.G. 22.10.07 Assisted bathroom, allow one refuse collection point to enter into the layout of apt 24.

Revision B - J.G. 25.10.07 1 door, bathroom area over into bedroom to accommodate the wheelchair apartment 24.

Revision C - J.G. 25.10.07 Adjusted on corner unit circumstances.

Revision D - J.G. 25.10.07 Windows removed from corner apartment to apt 12.

Revision E - J.G. 25.10.07 Corridor area where position amended to meet apt 24/30.

Revision F - J.G. 25.10.07 Doors removed in corner space.

Revision G - J.G. 25.10.07 Structures added to drawing.

Revision H - J.G. 25.10.07 Double door added to bathroom apt 24.

Revision I - J.G. 25.10.07 Medical box & covered section through workshop added to apt 1 & ground connection.

Revision J - J.G. 25.10.07 Assisted bathroom changed to normal bathroom.

Revision K - J.G. 25.10.07 New E - CDV - 24/05/2008 Amendments to landscaping and external elements.

Revision L - J.G. 27.10.08 60 zone amended.

Revision M - J.G. 02.11.08 Schedule updated.

Drawing title

approved

construction

preliminary

issued

information

contract

hand

Scale 1:200 @ A2

Date 22-10-07

Drawn RJ

Single 1773/16/101 G

First Floor Layout
Extra Care Scheme
Saltersbrook, Goldthorpe

