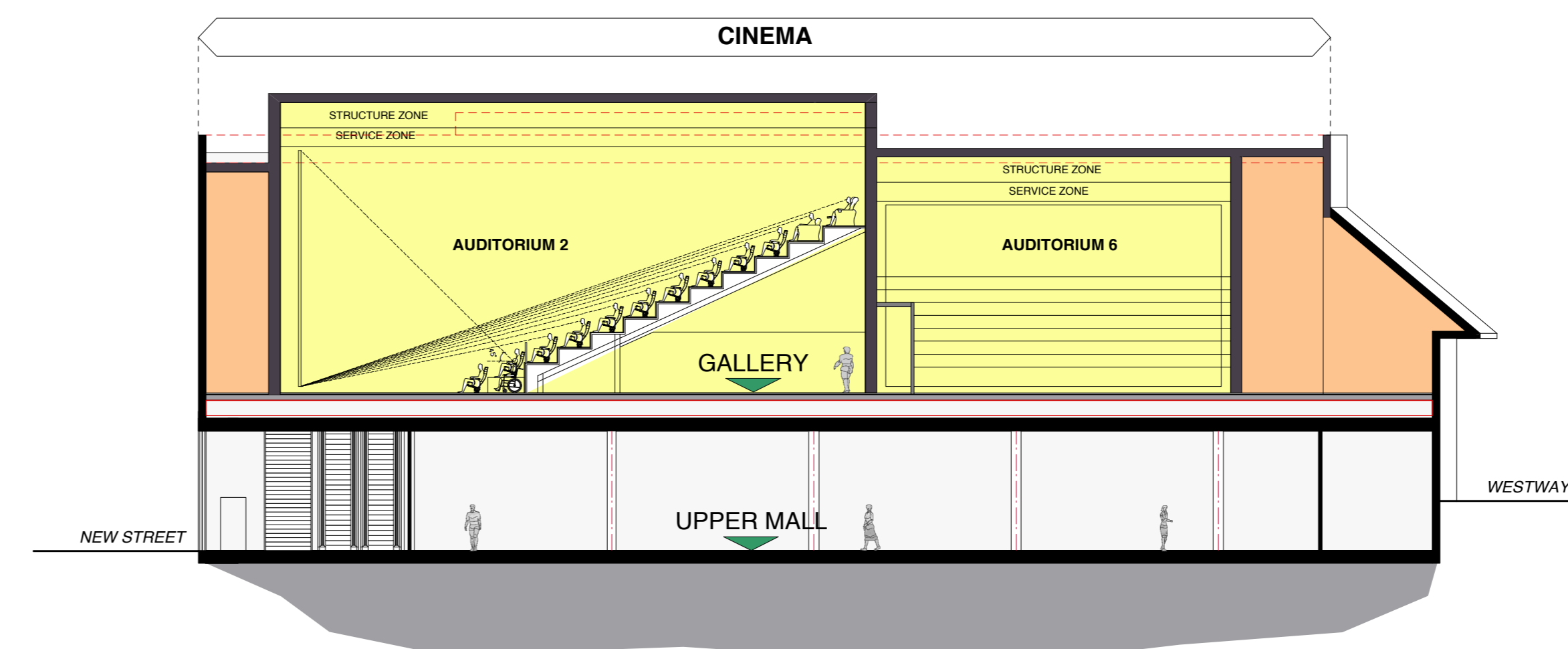
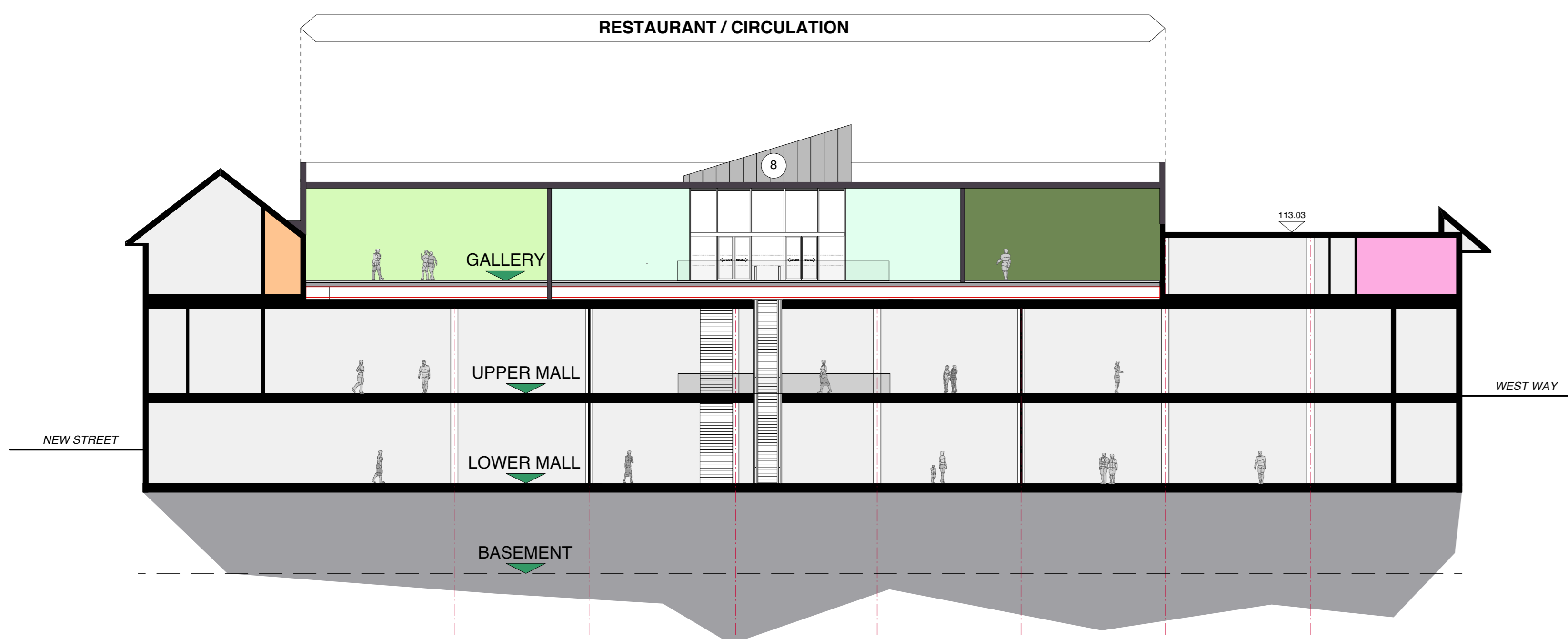


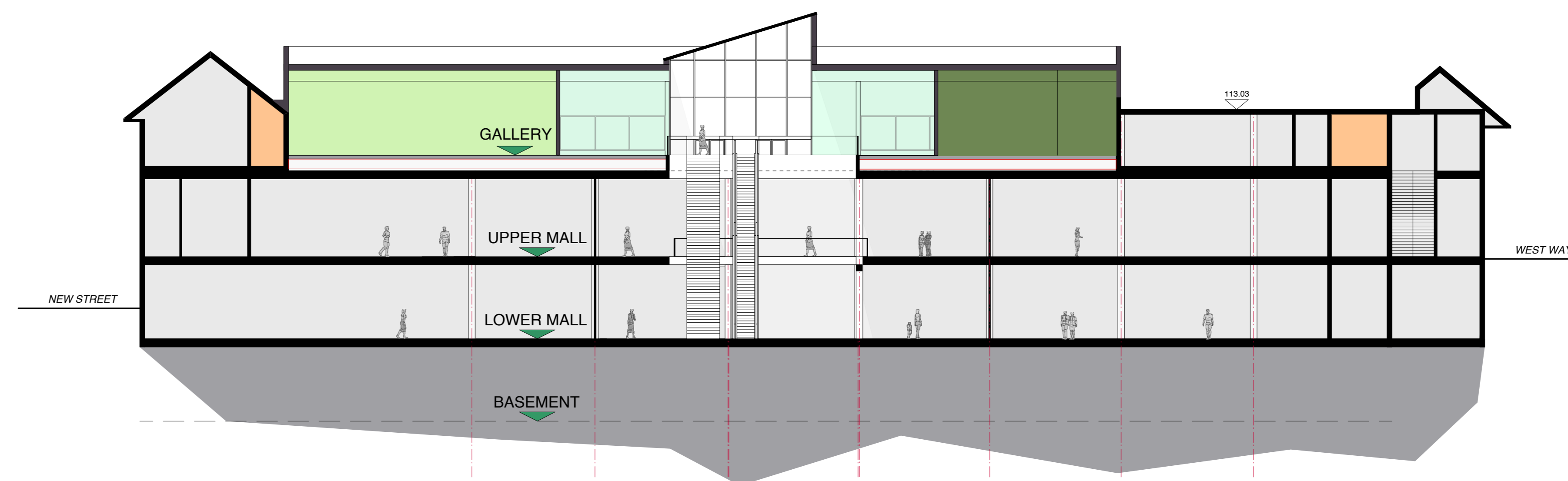
**SECTION C-C**



**SECTION D-D**



**SECTION E-E**



**SECTION F-F**

- NEW MATERIALS TO EXTERIOR**
- 1 ZINC SHINGLE FINISH ON KINGSPAN BENCHMARK INSULATED PANEL OR SIMILAR BACKING
  - 2 POWDER COATED ALUMINIUM CASSETTE PANELS ON KINGSPAN BENCHMARK INSULATED PANEL OR SIMILAR BACKING
  - 3 POWDER COATED ALUMINIUM GLAZED ENTRANCE SCREEN WITH AUTOMATIC SLIDING DOOR SYSTEMS. GREY GLASS PANELS OVER STRUCTURE
  - 4 POWDER COATED ALUMINIUM TUBULAR ROOFS AS DRAWN HANGING / FIXED TO GLAZED ENTRANCE SCREEN
  - 5 GLAZED ROOFLIGHT SYSTEM WITH STAINLESS STEEL OR POLYESTER POWDER COATED ALUMINIUM FRAME SYSTEM
  - 6 SINGLE PLY MEMBRANE ROOF SYSTEM
  - 7 REINSTATED / NEW TILED ROOF TO MATCH EXISTING
  - 8 KINGSPAN COMPOSITE INSULATED OPTIMO FLAT FINISH PANELS LAID VERTICALLY, OR SIMILAR

- SIGNAGE INSTALLATIONS**
- A HALO ILLUMINATED CINEMA SIGNAGE. INDICATIVE. SEPARATE PLANNING APPLICATION BY CINEMA OPERATOR TO BE SUBMITTED AT FUTURE DATE
  - B EXTERIOR GRADE DIGITAL SIGNAGE. PANEL DISPLAYING INFORMATION ON CINEMA, RESTAURANTS, CENTRE ACTIVITIES AND ADVERTISEMENTS
  - C DIRECTIONAL SIGNAGE BLOCK AS DRAWN

- EXTERNAL LIGHTING**
- Z WHITE LED STRIP SET IN SQUARE PATTERN AT 45 DEGREES WITHIN ZINC SHINGLE GRID
  - Y EXTERNAL LED COLOUR WASH LIGHTING TO ILLUMINATE THE EXTERIOR PANEL FACE. THE STRATEGY IS TO PROVIDE CHANGING COLOURED EXTERNAL ILLUMINATION TO THESE AREAS IN THE EVENING

- CINEMA**
- RESTAURANT UNITS**

Revisions:

**PLANNING APPLICATION**  
REQUEST IMMEDIATELY CONSTRUCTION ISSUE FROM ARCHITECT IF THIS DRAWING IS ON SITE

Copyright of this drawing and all designs and detail on it remains the property of Craig Foster Architects and has not been released to any other party unless specifically documented in writing. Do not scale this drawing. Check all dimensions and detail on site before proceeding. Report any discrepancies before proceeding.



client : **Alhambra** shopping centre

job title : **GALLERY LEVEL CINEMA / RESTAURANT DEVELOPMENT**

dwg. title : **SECTIONS (2) AS PROPOSED**

**CRAIG FOSTER ARCHITECTS**

date : 23.02.2017	dwg no.	rev
scale 1:200@A0 1:565@A3	<b>13160(5)114</b>	