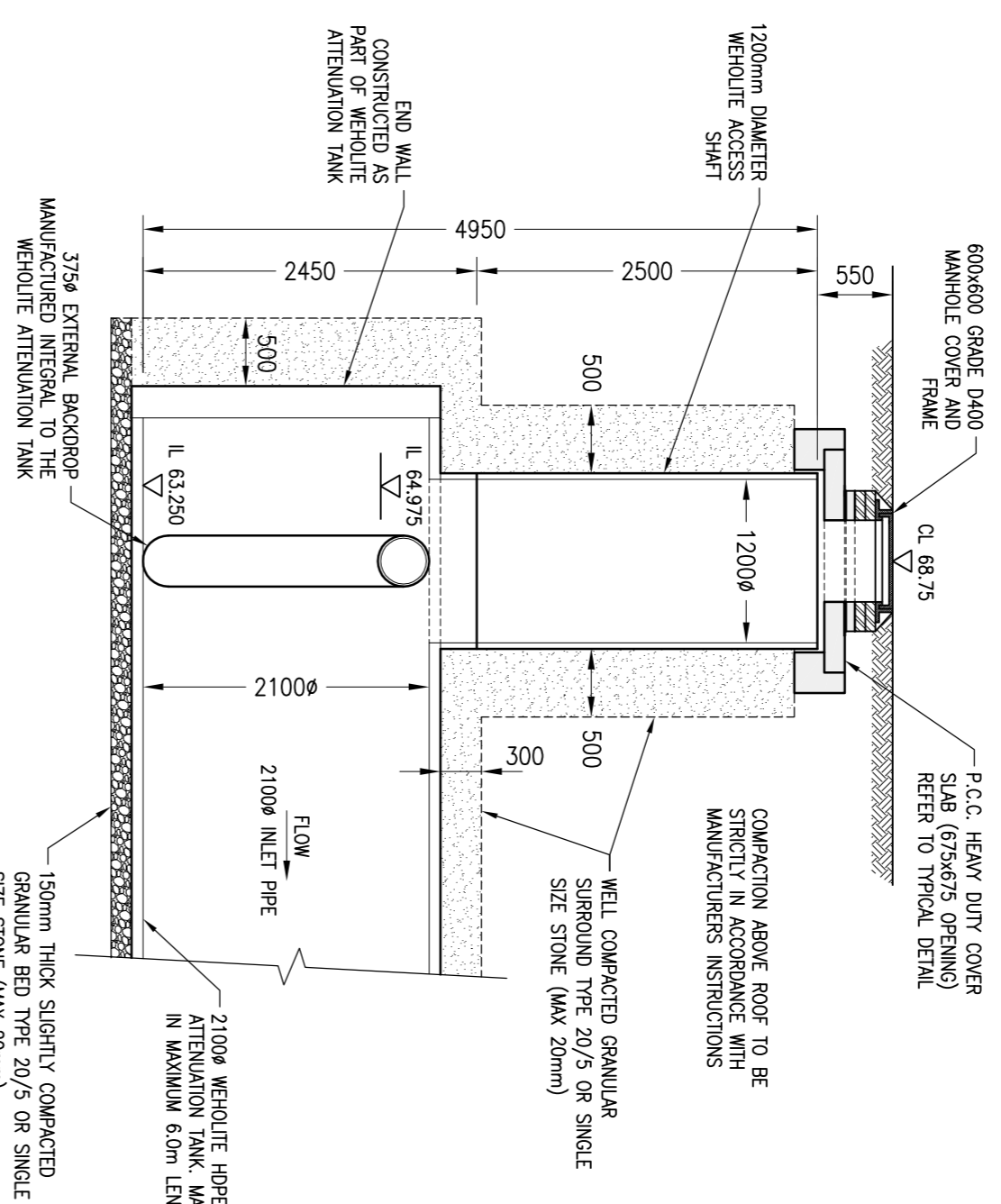
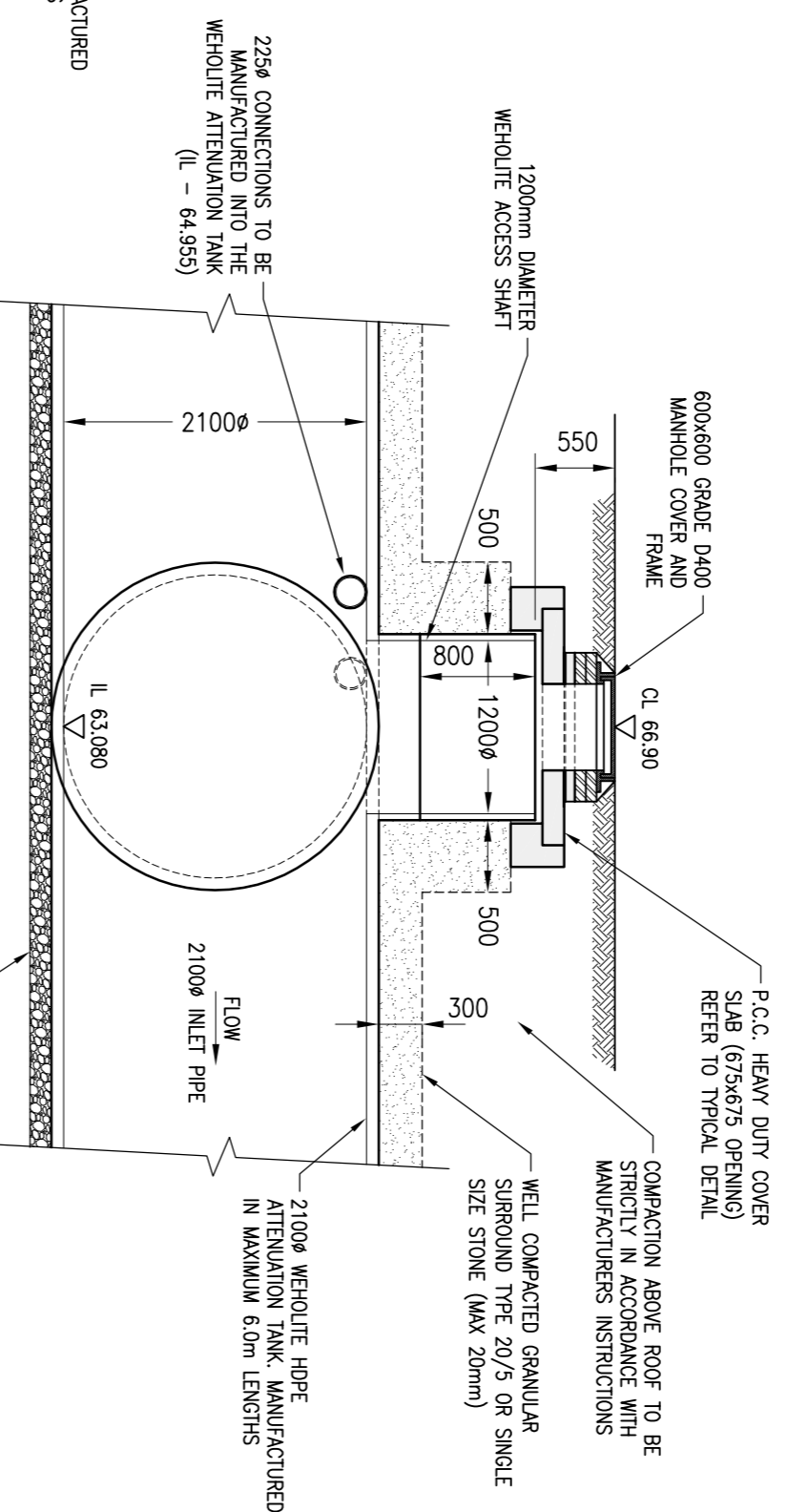


TEEKAY COUPLING DETAIL
(SCALE: 1:50)

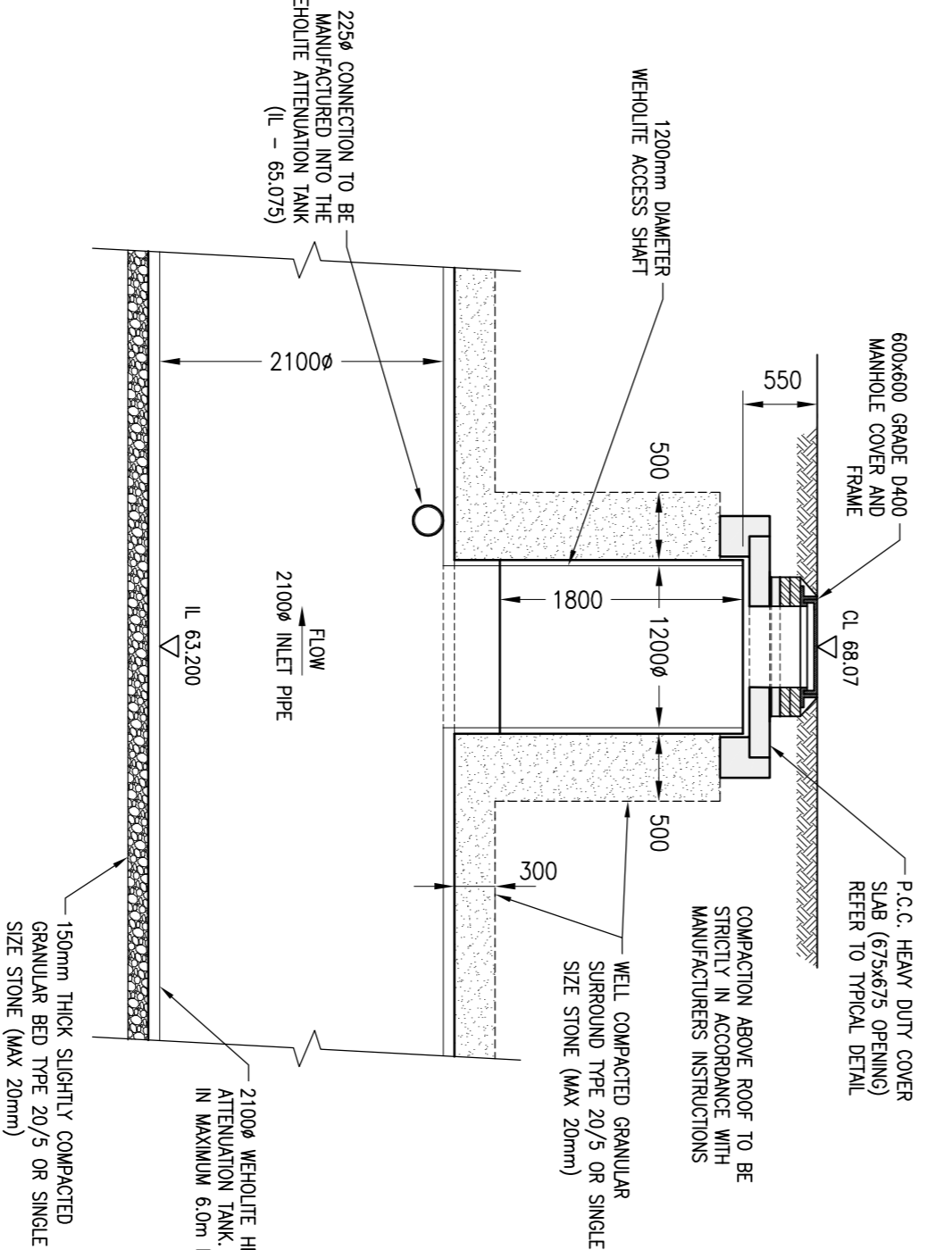
REFER TO MANUFACTURERS INSTALLATION GUIDELINES



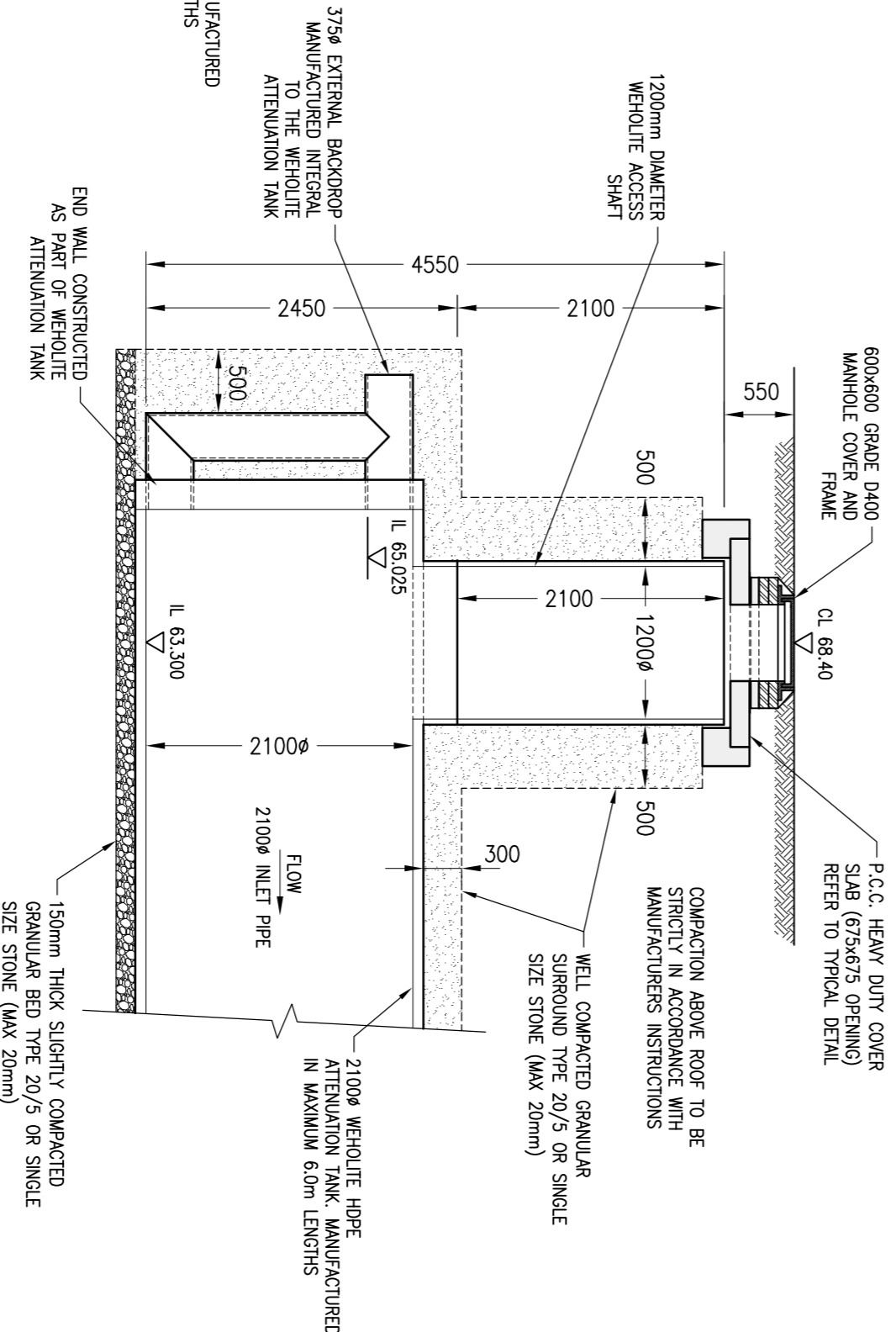
SECTION THROUGH ACCESS CHAMBER S18
(SCALE: 1:50)



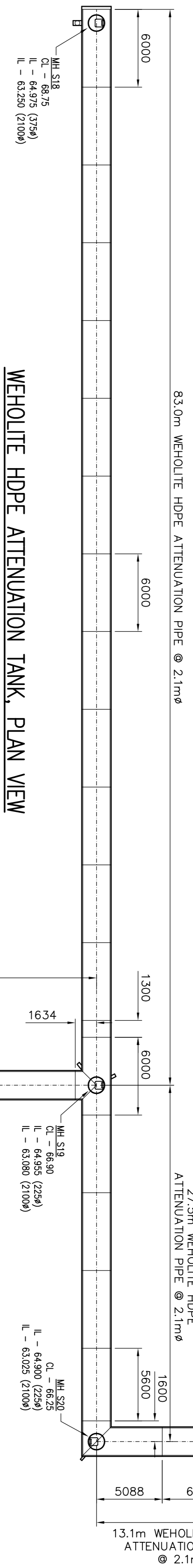
SECTION THROUGH ACCESS CHAMBER S19
(SCALE: 1:50)



SECTION THROUGH ACCESS CHAMBER S7
(SCALE: 1:50)

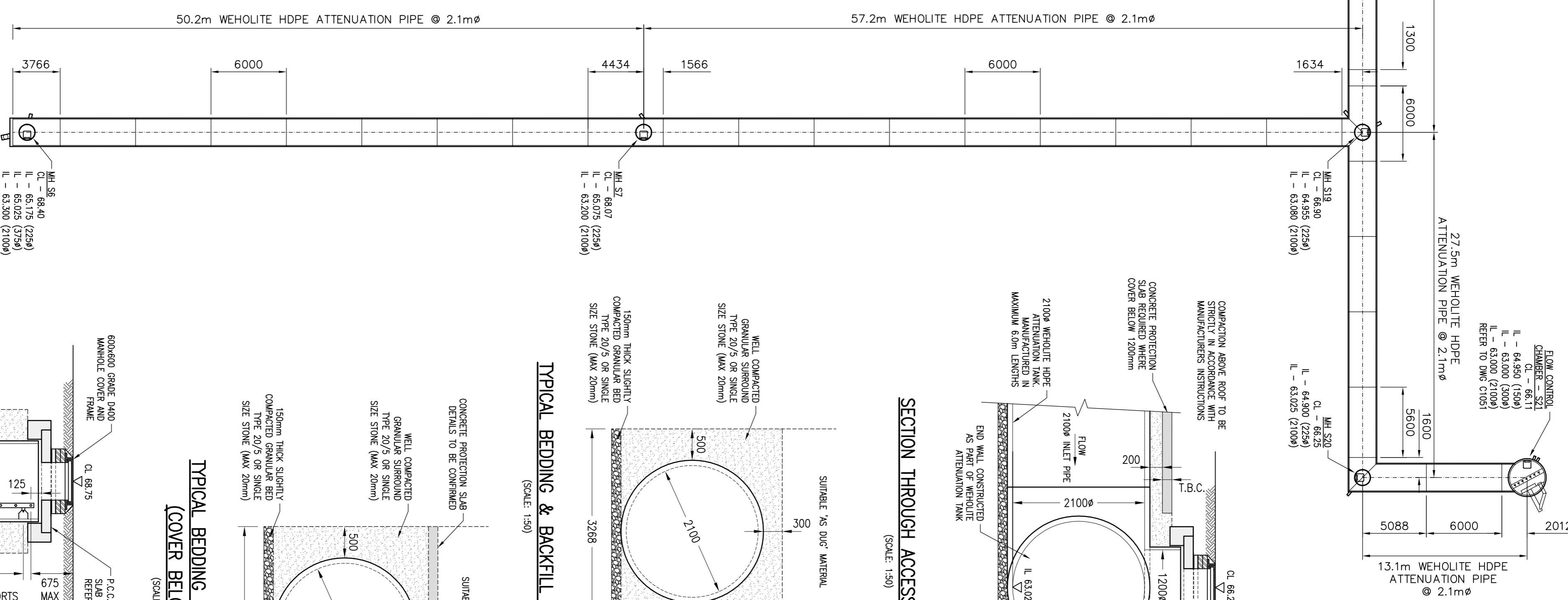


SECTION THROUGH ACCESS CHAMBER S6
(SCALE: 1:50)



WEHOLUTE HDPE ATTENUATION TANK, PLAN VIEW
(1:250)

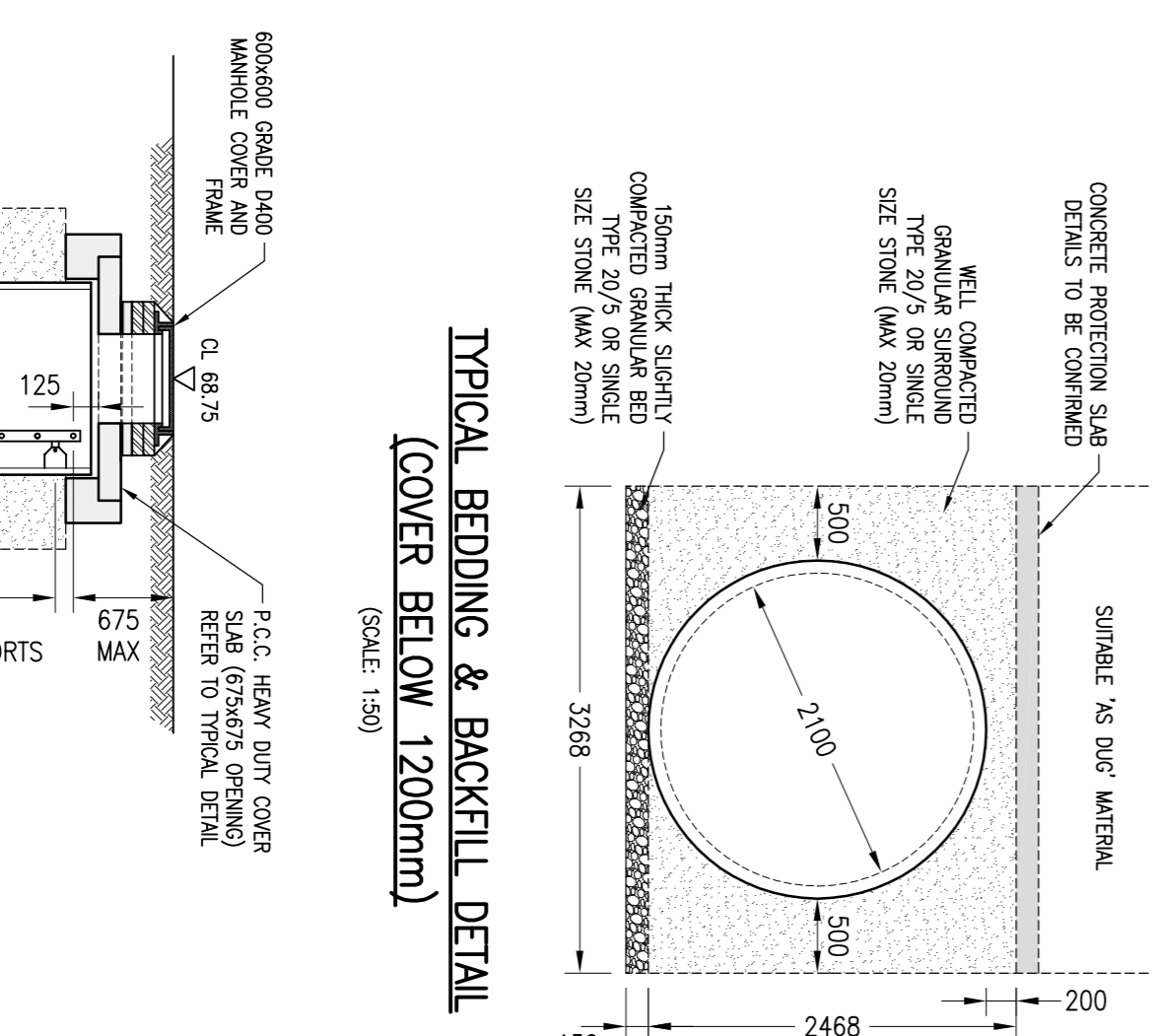
WEHOLUTE UNITS BY ASSET INTERNATIONAL LTD.
ALL TO BE INSTALLED IN STRICT ACCORDANCE WITH
MANUFACTURER'S SPECIFICATIONS AND RECOMMENDATIONS.



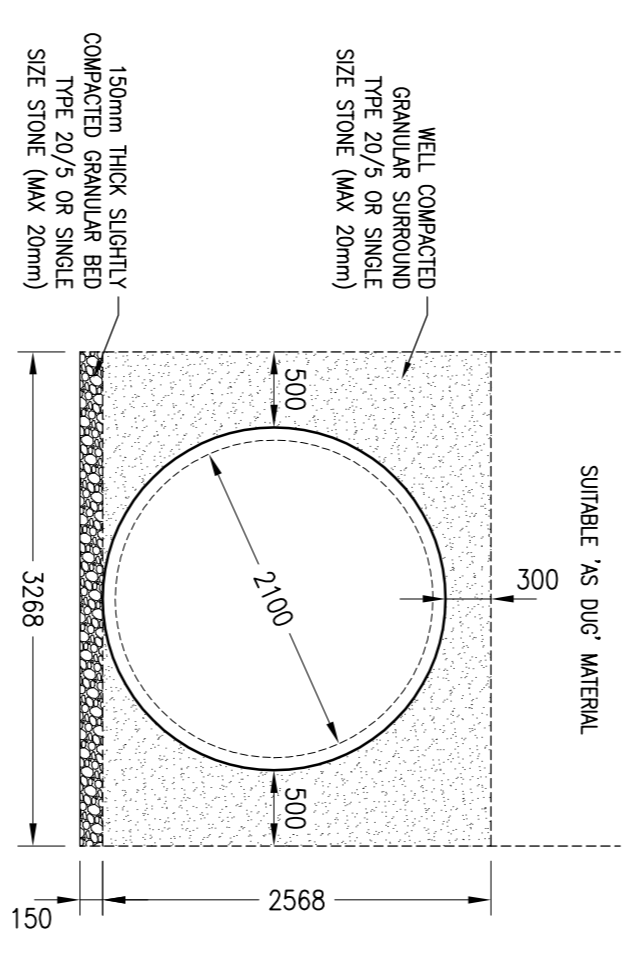
50.2m WEHOLUTE HDPE ATTENUATION PIPE @ 2.1m



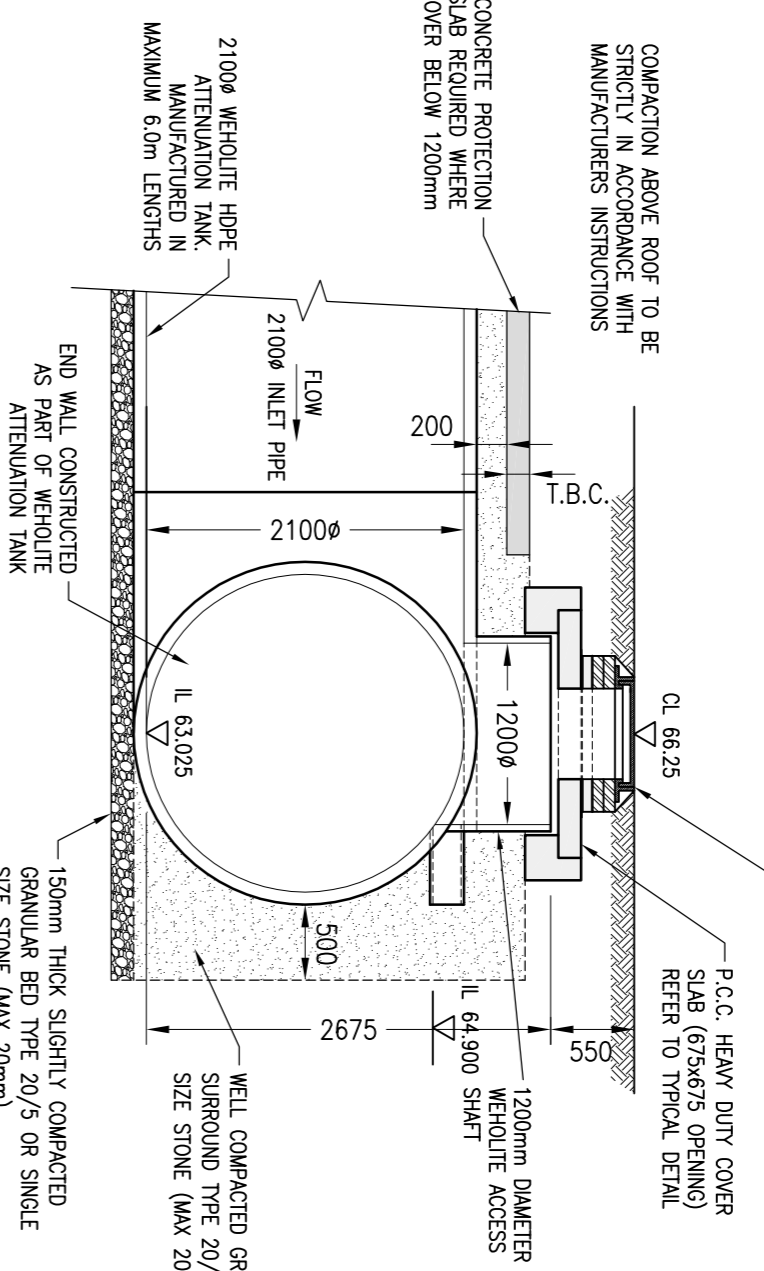
57.2m WEHOLUTE HDPE ATTENUATION PIPE @ 2.1m



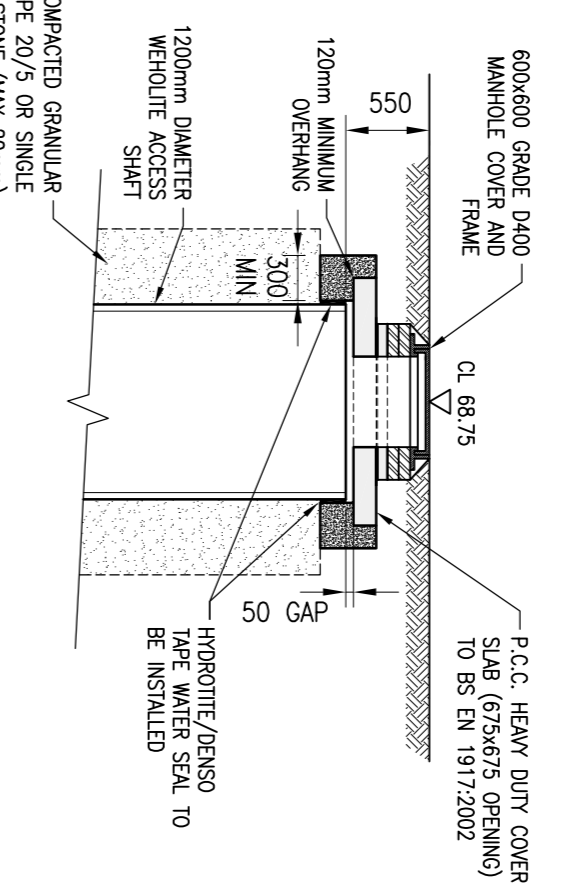
TYPICAL BEDDING & BACKFILL DETAIL
(COVER BELOW 1200mm)
(SCALE: 1:50)



TYPICAL BEDDING & BACKFILL DETAIL
(SCALE: 1:50)



SECTION THROUGH ACCESS CHAMBER S20
(SCALE: 1:50)



YORKSHIRE WATER MANHOLE DETAILS
(SCALE: 1:50)

NOTES:

- COVER SLABS MUST COMPLY WITH BS EN 124 OR WILL BE SELECTED BY YORKSHIRE WATER INSPECTOR.
- WHERE THE CLEAR OPENING OF THE MANHOLE PRODUCT IS DIFFERENT TO THAT OF THE MANHOLE COVER, THE COVER SHALL BE ORDERED TO FIT THE CLEAR OPENING OF THE MANHOLE PRODUCT. THE COVER SHALL BE ORDERED TO FIT THE CLEAR OPENING OF THE MANHOLE PRODUCT.
- PLEASE REFER TO CONCRETE PIPE SYSTEMS ASSOCIATION (CPSA) TECHNICAL BULLETIN ISSUED AUTUMN 2004 FOR REINFORCED CONCRETE SLAB DESIGN SECS.
- ALL APPROPRIATE SEWER WORKS AND MATERIAL TO BE IN ACCORDANCE WITH YORKSHIRE WATER'S STANDARDS/RECOMMENDATIONS/ADEQUACY & RETAINED.
- CONCRETE BASE FORMATION BY CONTRACTOR. TIMBER FRAME TO BE PREPARED AND INSTALLED IN MANHOLE PRIOR TO PLACEMENT OF COVER SLAB. COVER SLAB WILL BE PLACED AND COMPACTED IN-SITU WITHIN THE TIMBER FRAME. COVER SLAB TO BE FINISHED WITH HIGH STRENGTH TOPPING. FORMWORK TO BE REMOVED.

SUBJECT TO THE APPROVAL OF
ALL RELEVANT AUTHORITIES

Only PDF/DWG Issues of this drawing are controlled. All other formats (eg. PNG AutoCAD Files) are UN-controlled and are used at your own risk.
This drawing is copyright ©. It is sent to you in confidence and must not be copied, used or disclosed to any third party without the prior approval of the copyright owner. It remains the property of 3E and must be returned on request.
Contractors should refer to the residual risks contained in the CDM Pre Construction Information before carrying out any site operations and should not issue parts of this drawing without including the CDM notes and references. This information will include details of the SIGNIFICANT risks which 3E have considered beyond that which a competent contractor should be aware of.

Client: **3E consulting engineers**
4 Ladder Close
Wetherfield
WF4 3BA
T 01924 240020
F 01924 240471
www.3econsulting.com

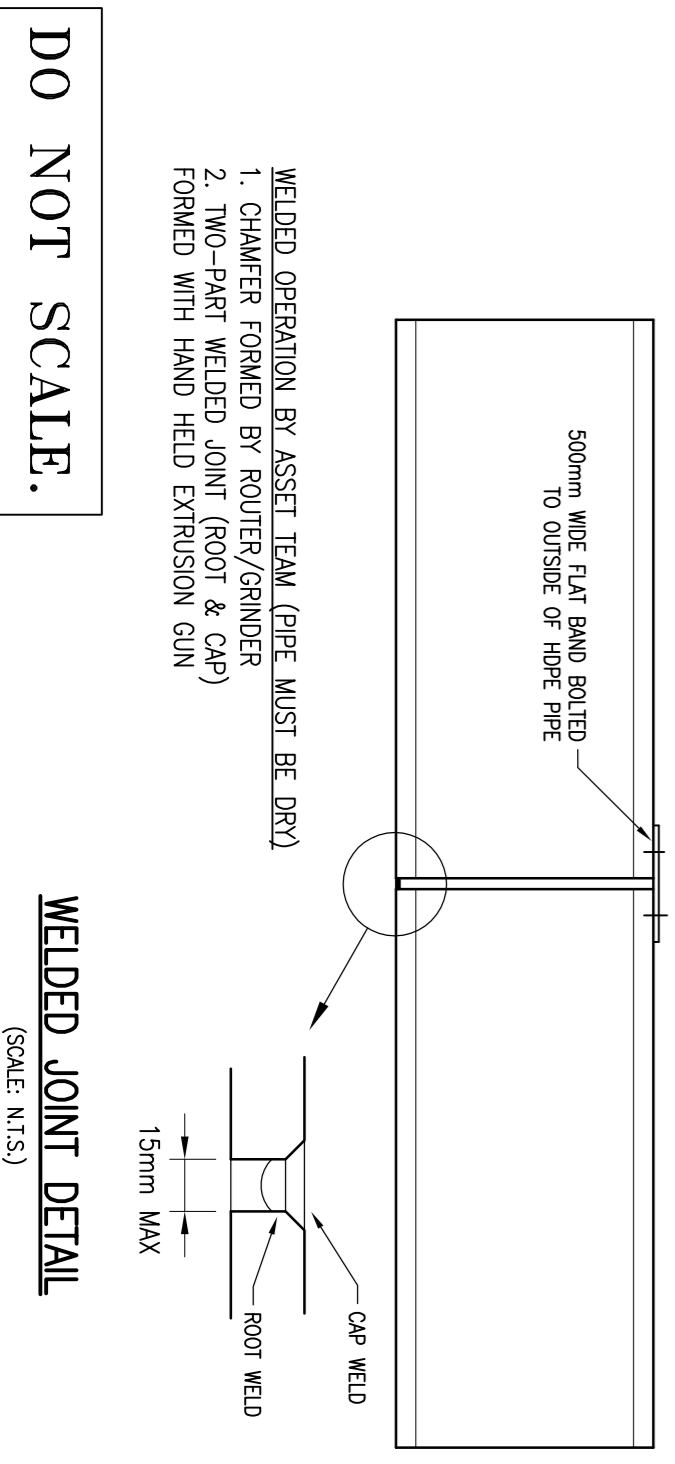
Project: **Midland Road, Royston**

Title: **Surface Water Attenuation Tank Details**

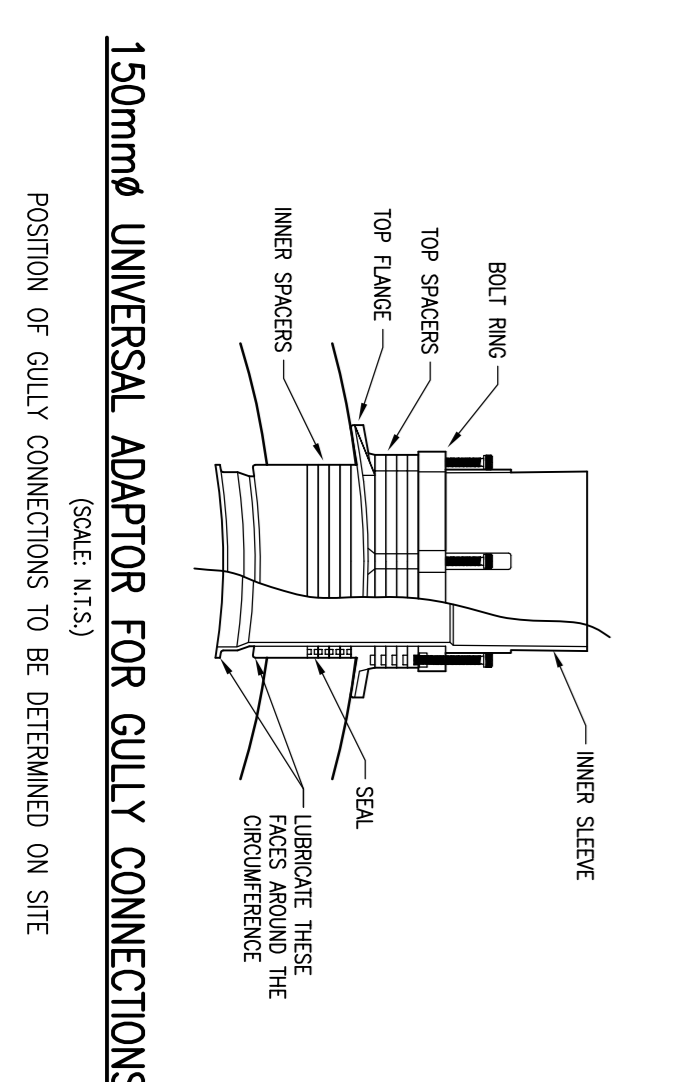
Scale: 1:250
Drawn: JM
Checked: RL
Date: MAY 13

Drawing Status: **Preliminary**

Job No: 11120
Drawing No: C1050
Revision: P1

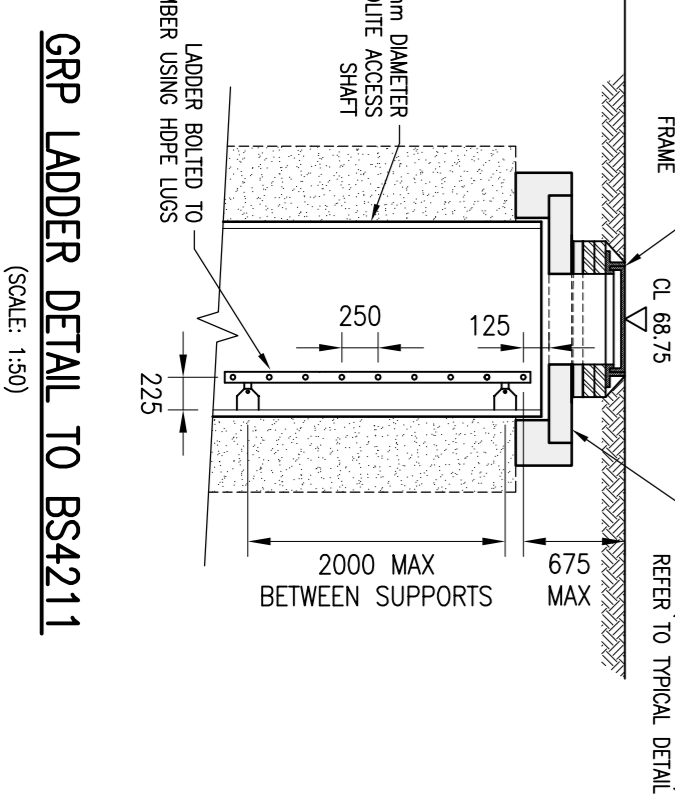


WELDED JOINT DETAIL
(SCALE: N.T.S.)



150mm UNIVERSAL ADAPTOR FOR GULLY CONNECTIONS
(SCALE: N.T.S.)

POSITION OF GULLY CONNECTIONS TO BE DETERMINED ON SITE



GRP LADDER DETAIL TO BS4211
(SCALE: 1:50)

DO NOT SCALE.