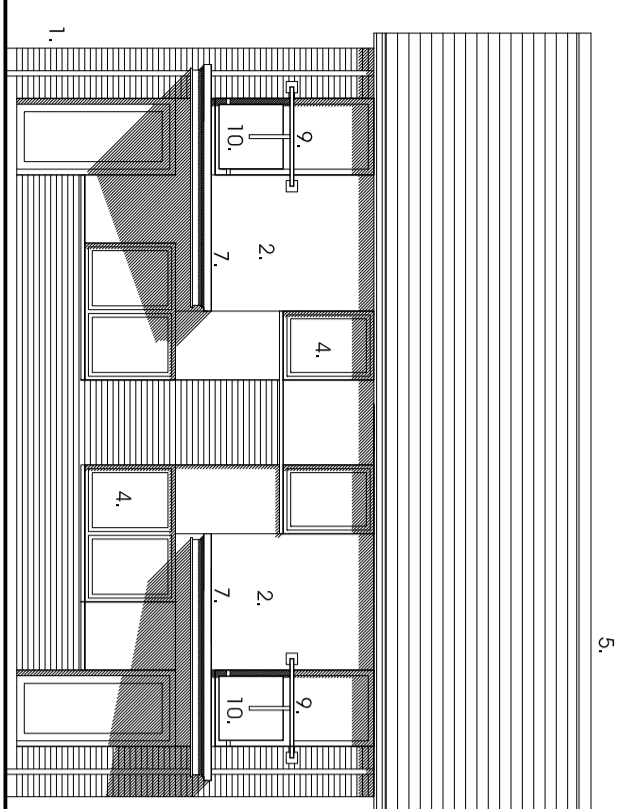
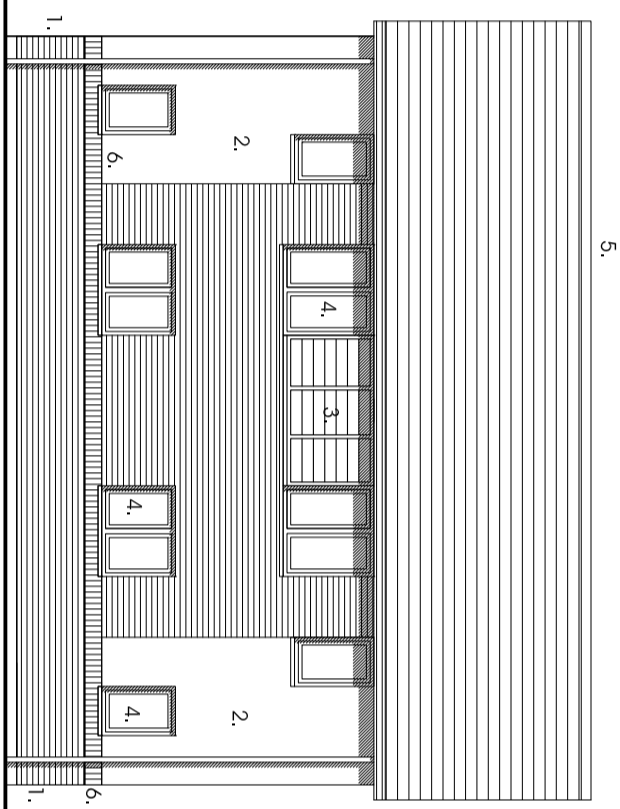


The general contractor is responsible for the verification of dimensions on site and the client is to be informed of any discrepancies. The status of information contained in a computer generated drawing shall be verified to that conveyed by the paper copy.

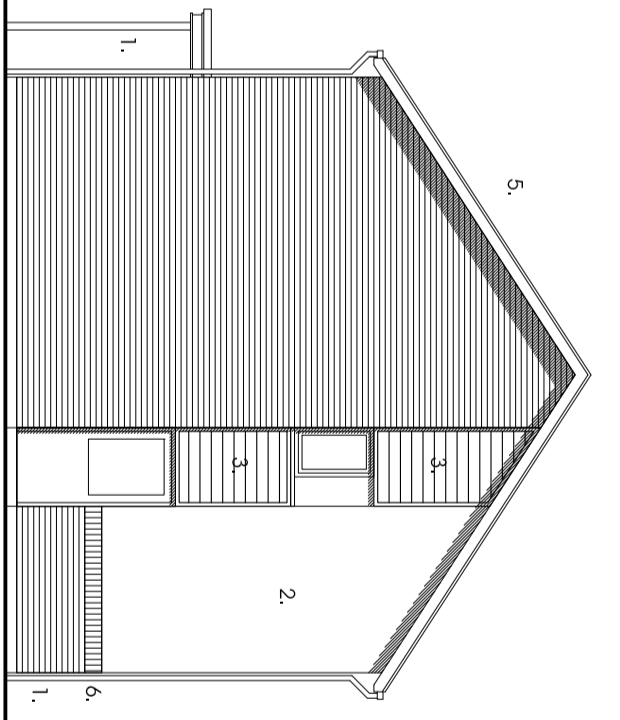
Revisions:  
A 01/08/08 C-0297  
G4: plan amended and furniture added to suit.



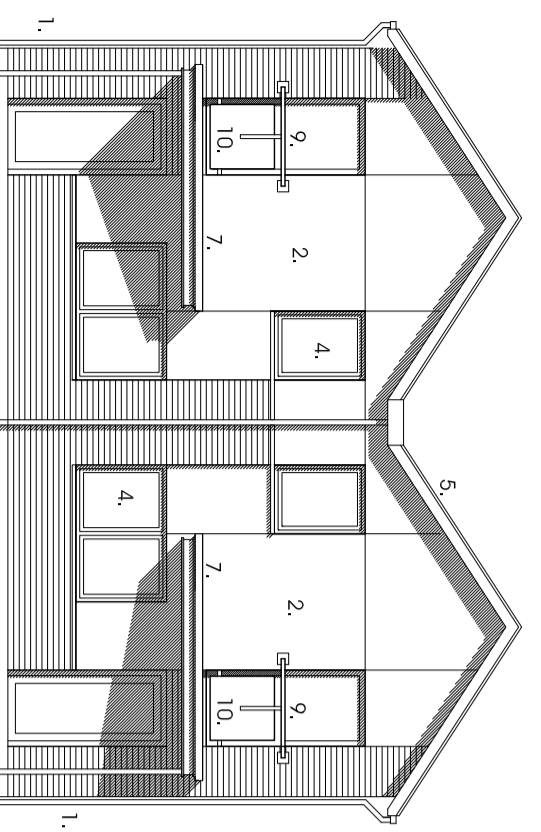
Entrance Elevation  
Simple Pitched Roof Option



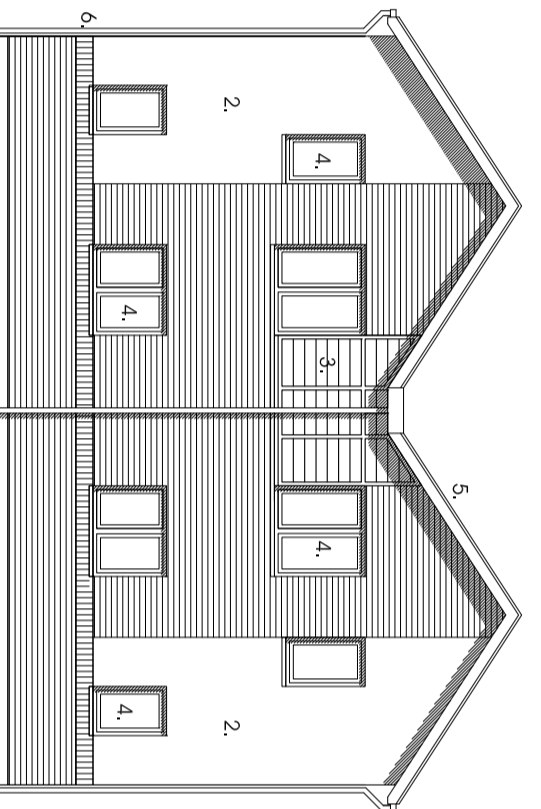
Rear Elevation



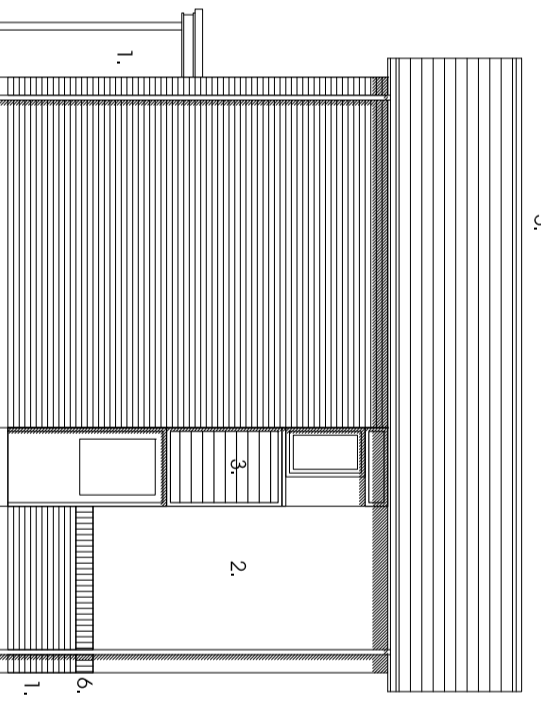
Side Elevation



Entrance Elevation  
Gable to Street Option

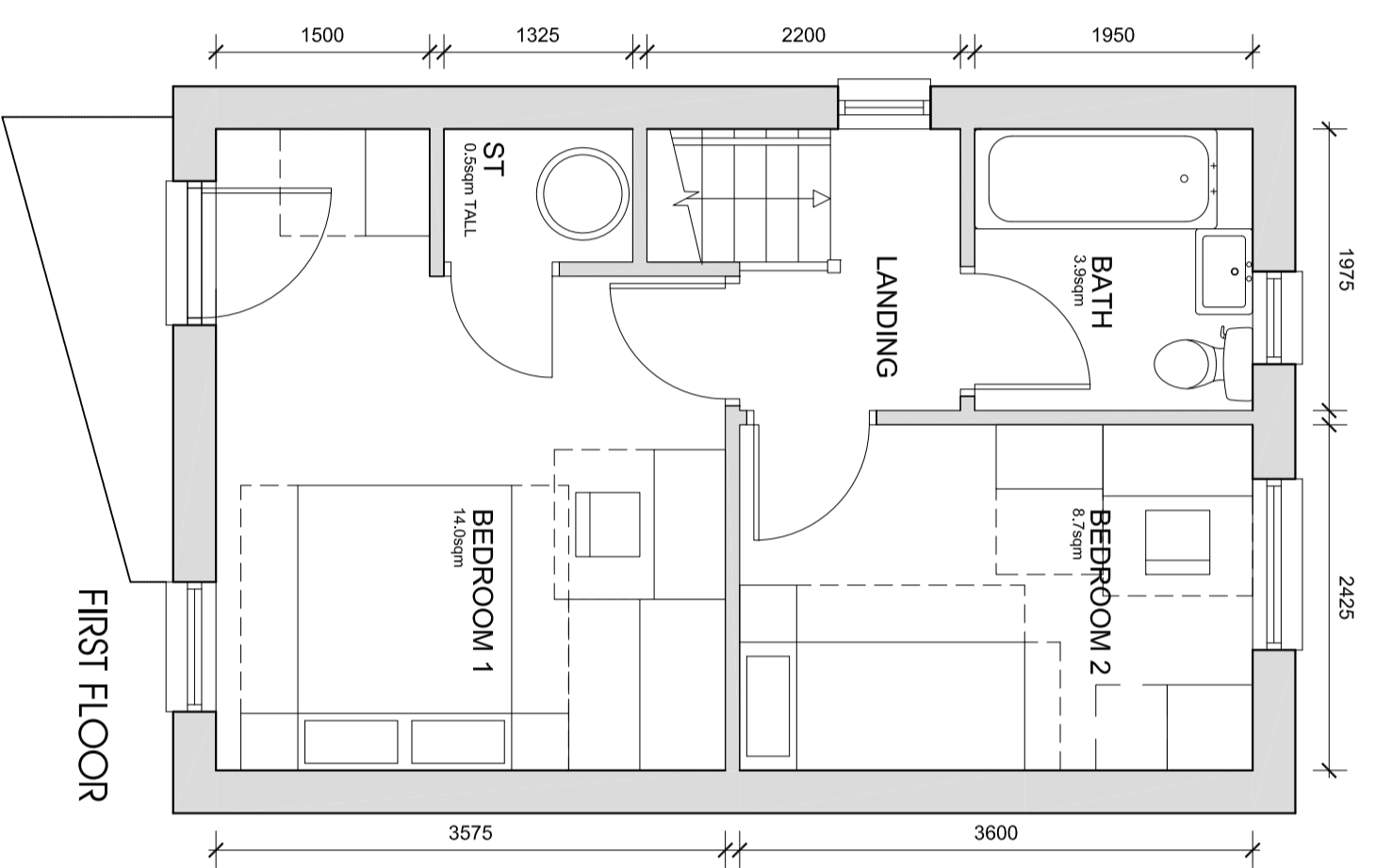
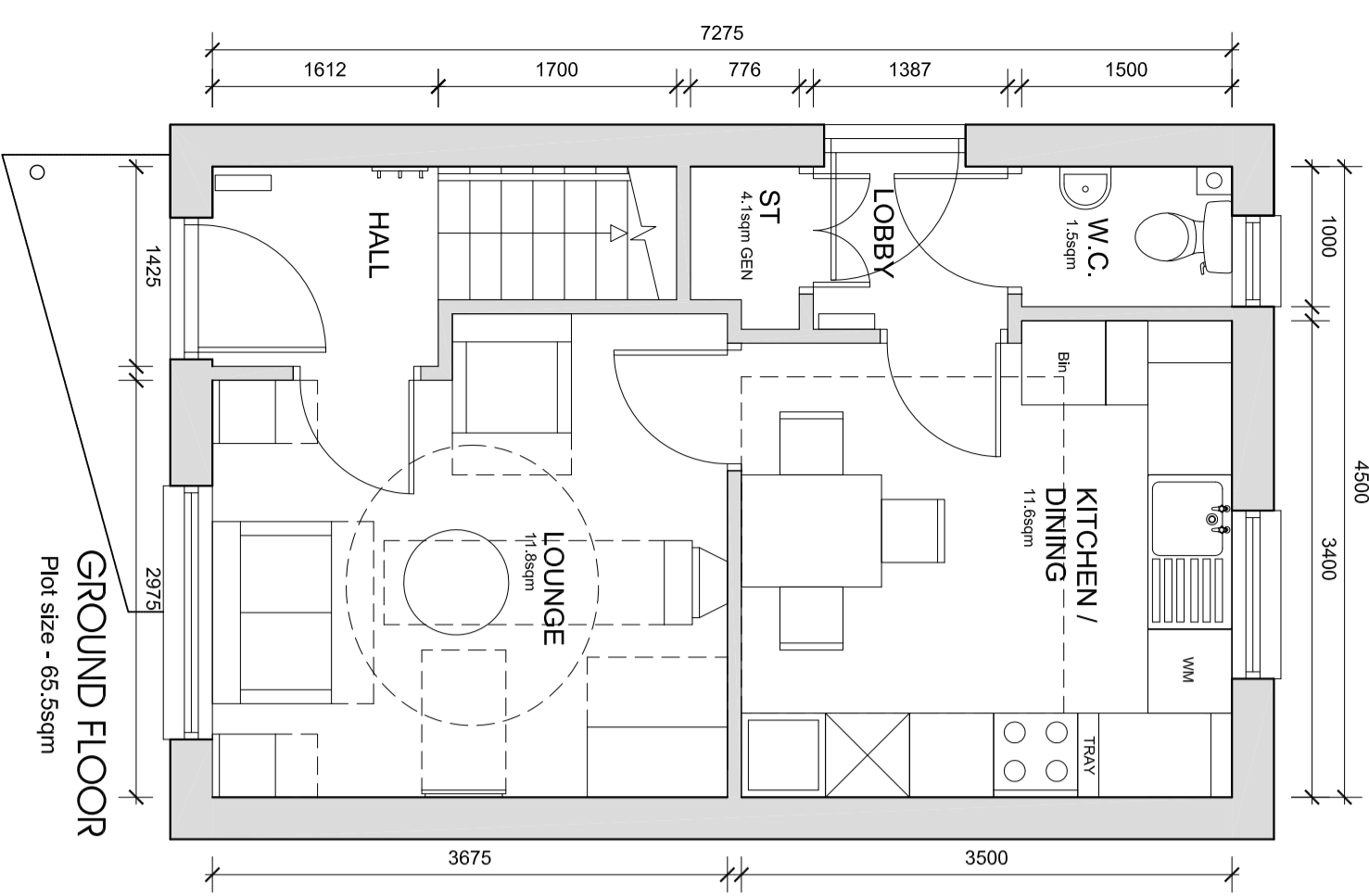
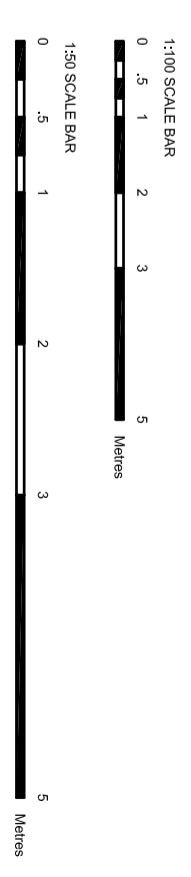


Rear Elevation



Side Elevation

1. F1. Quality facing brickwork
2. Through coloured render system (ie. Siro / Weber or similar approved)
3. 25mm x 125mm horizontal timber PMW boarding on vertical knitted softwood battens. Timber to be heat treated European Redwood, from certified managed sustainable forests (ie. Fimcrest-Thornwood or similar approved)
4. Striped timber framed double glazed windows
5. Interlocking concrete tiled roof
6. Soldier course detail
7. Projecting entrance canopy with pressed metal colourcoated edge detail
8. Polished wall with pressed metal capping finished over from roof.
9. Galvanized steel bollards
10. Colourcoated pressed metal panel



**2b3p - 2 Storey**  
New Lodge Crescent, Barnsley  
Yorkshire Housing



Scale: 1:100/1:50 @ A2  
Date: JULY 2008  
Drawn: RJJ  
Dwg No: 2121-015-122A