

West

1 : 100



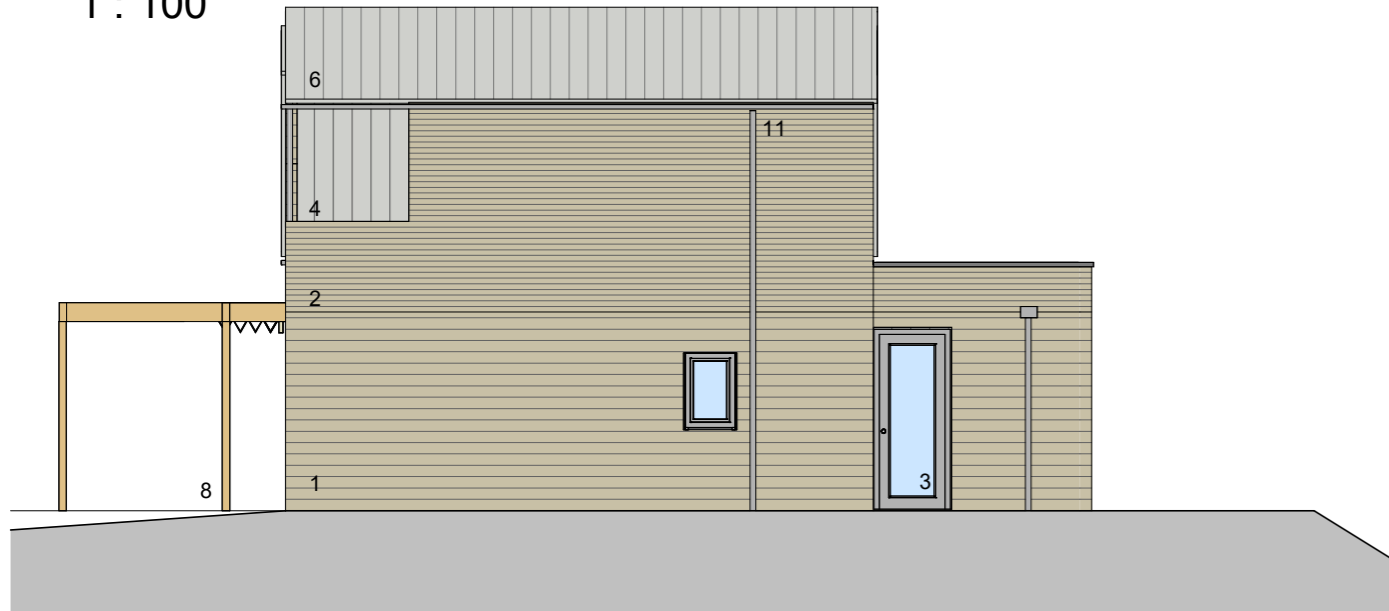
North

1 : 100



East

1 : 100



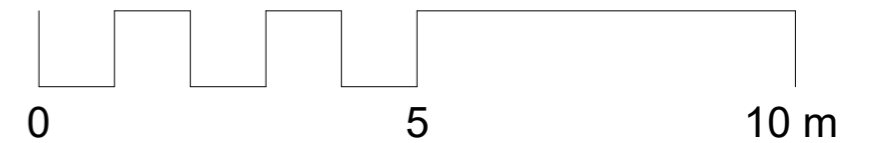
South

1 : 100



KEY

- | | |
|-------------------------------------------------------------------------|----------------------------------------------------------------------------|
| 1. 150mm coursed gritstone. | 7. Solar PV Panels |
| 2. 75mm coursed gritstone | 8. Timber pergola with roman shade awning |
| 3. Windows and external doors - timber with aluminium face - light grey | 9. Timber columns and beams to flat roof canopy structure. |
| 4. Steel standing seam wall cladding- light grey | 10. Dressed stone cills, jambs and lintols to openings facing Tower Street |
| 5. Slate roofing | 11. Aluminium rainwater goods - light grey |
| 6. Steel standing seam roofing - light grey | 12. Timber clad binstore enclosure |



NOTES

The contractor is responsible for checking dimensions, tolerances and references. Verify any discrepancies with the architect before proceeding with the work. Where an item is covered by drawings of different scales the larger scale drawing is to be worked to. Construct to figured dimensions only.

Date	Rev	Revision / author/ checker
26.01.24	A	Updated following client comments and design development. JNBP/SD
06.02.24	B	Issued for planning. JNBP/SD
07.05.24	C	Lower ground floor added as driveway changed. JNBP/SD

Purpose of Issue Planning

Project Tower Street

Drawing Proposed Elevations

Drwg. no 23-122 235 **Rev** C

Drawn JNBP **Checked** SD

Scale 1 : 100 @A3 **Date** 12/19/23